

6.5 Figures



Figure I: Modelled Road Links (Human Receptor Locations – Northern Extent)





Figure J: Modelled Road Links (Human Receptor and Verification Locations – Southern Extent)





Figure K: Modelled Road Links (Ecological Receptors)



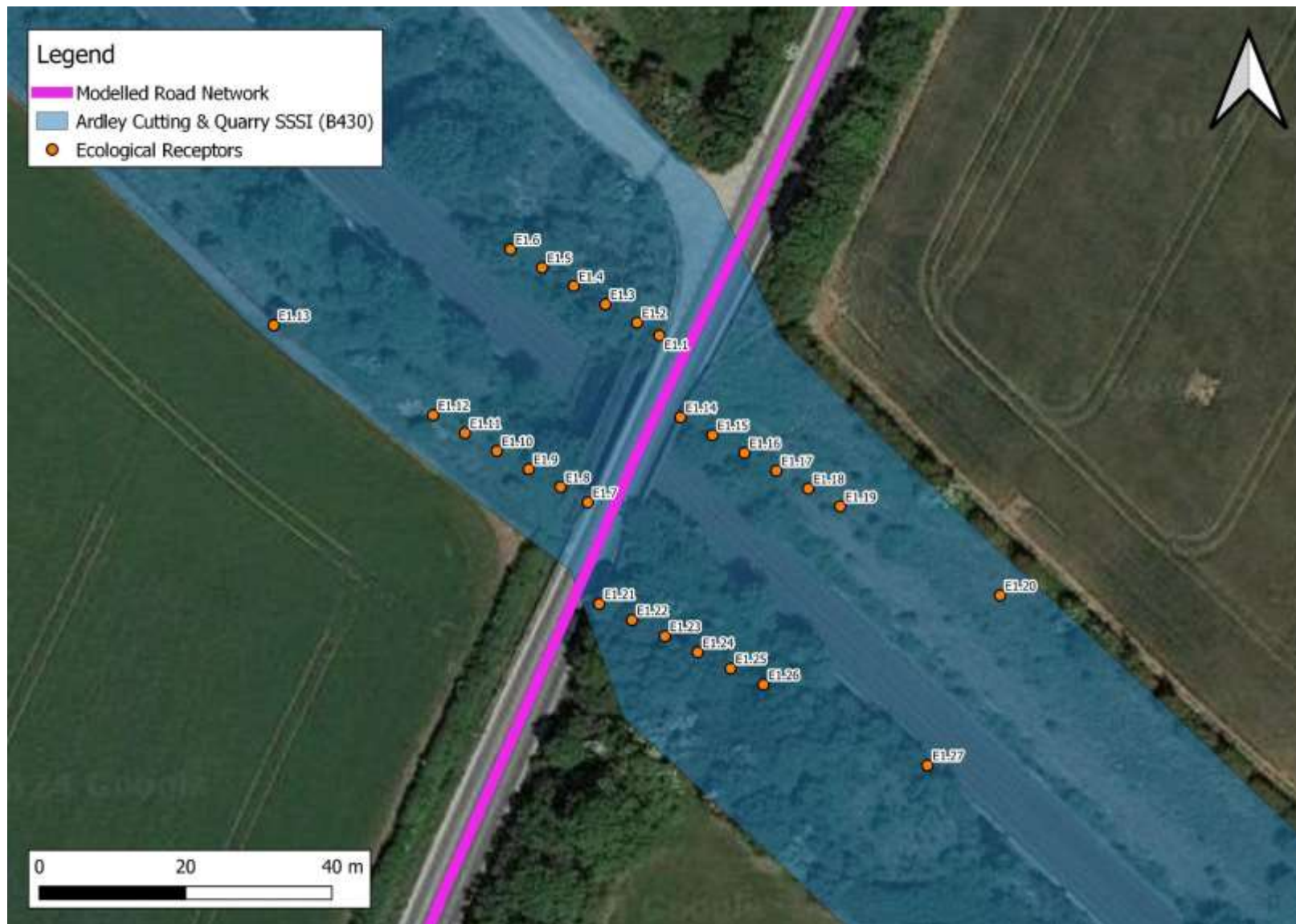


Figure L: Modelled Ecological Receptors (Ardley Cutting and Quarry SSSI (B430))



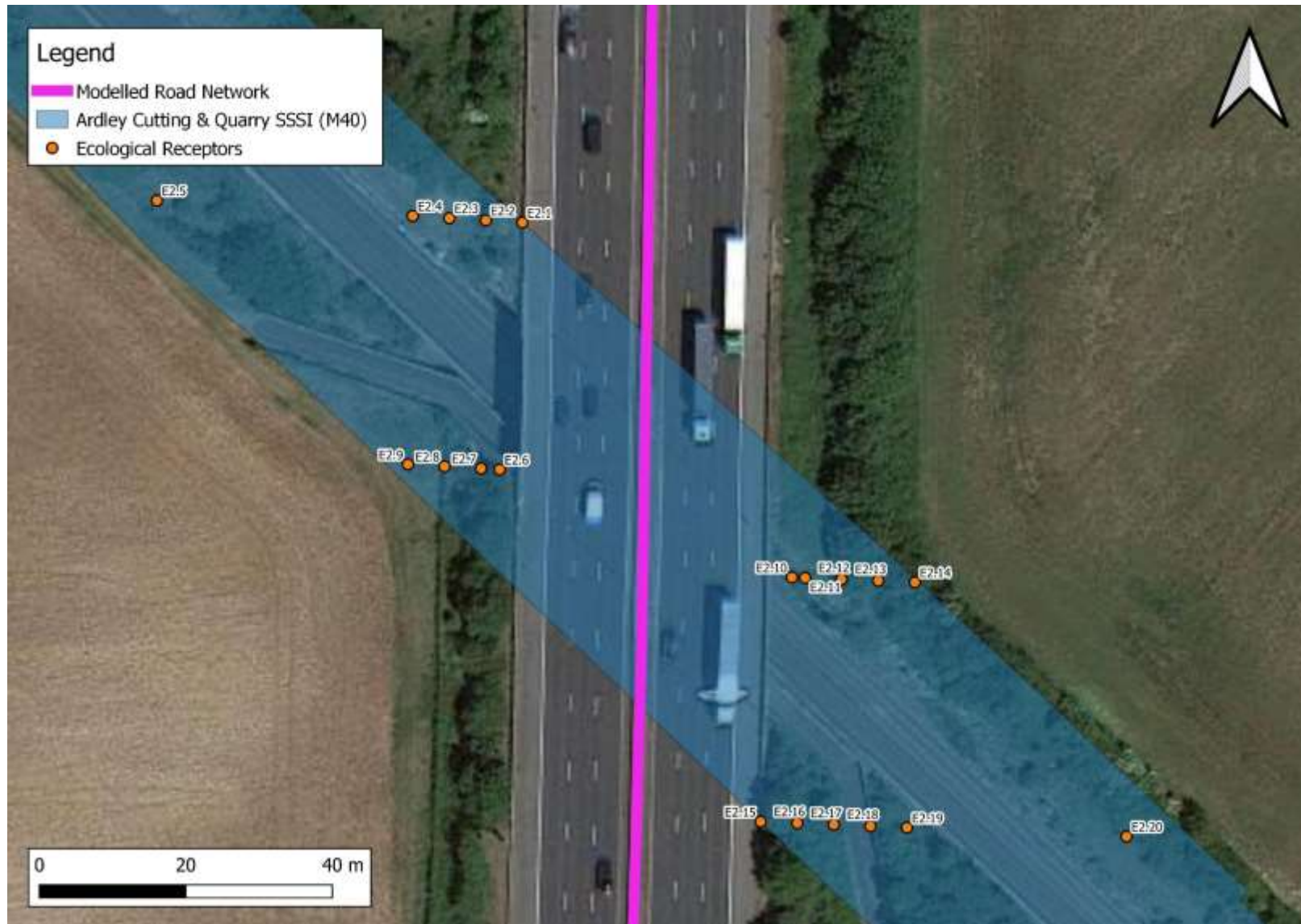


Figure M: Modelled Ecological Receptors (Ardley Cutting and Quarry SSSI (M40))





Figure N: Modelled Ecological Receptors (Stokes Little Wood AW)





Figure O: Modelled Ecological Receptors (Twelveacre Wood AW)





Figure P: Site Setting and Relevant Monitoring Locations



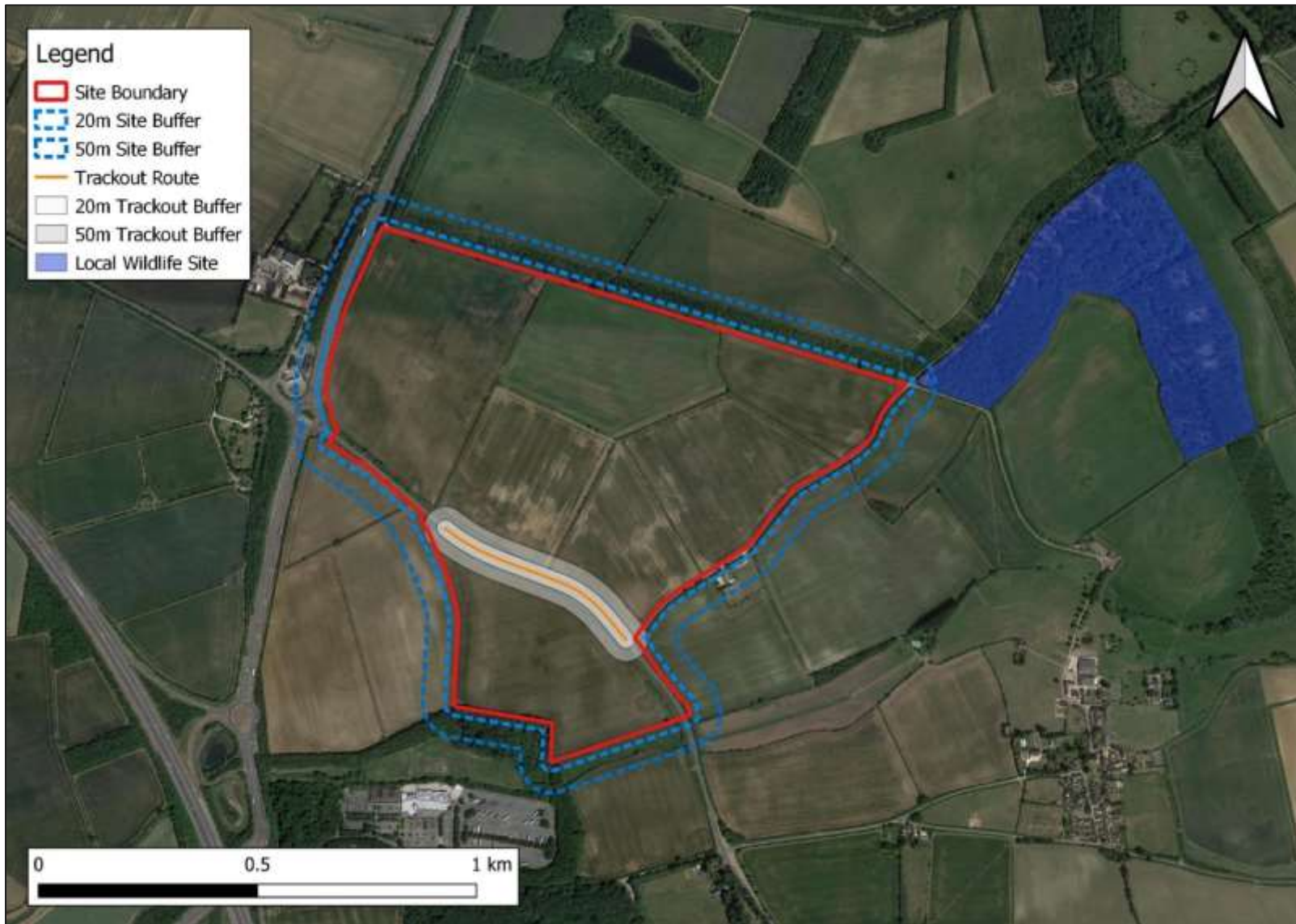


Figure Q: Construction Dust Assessment Buffers



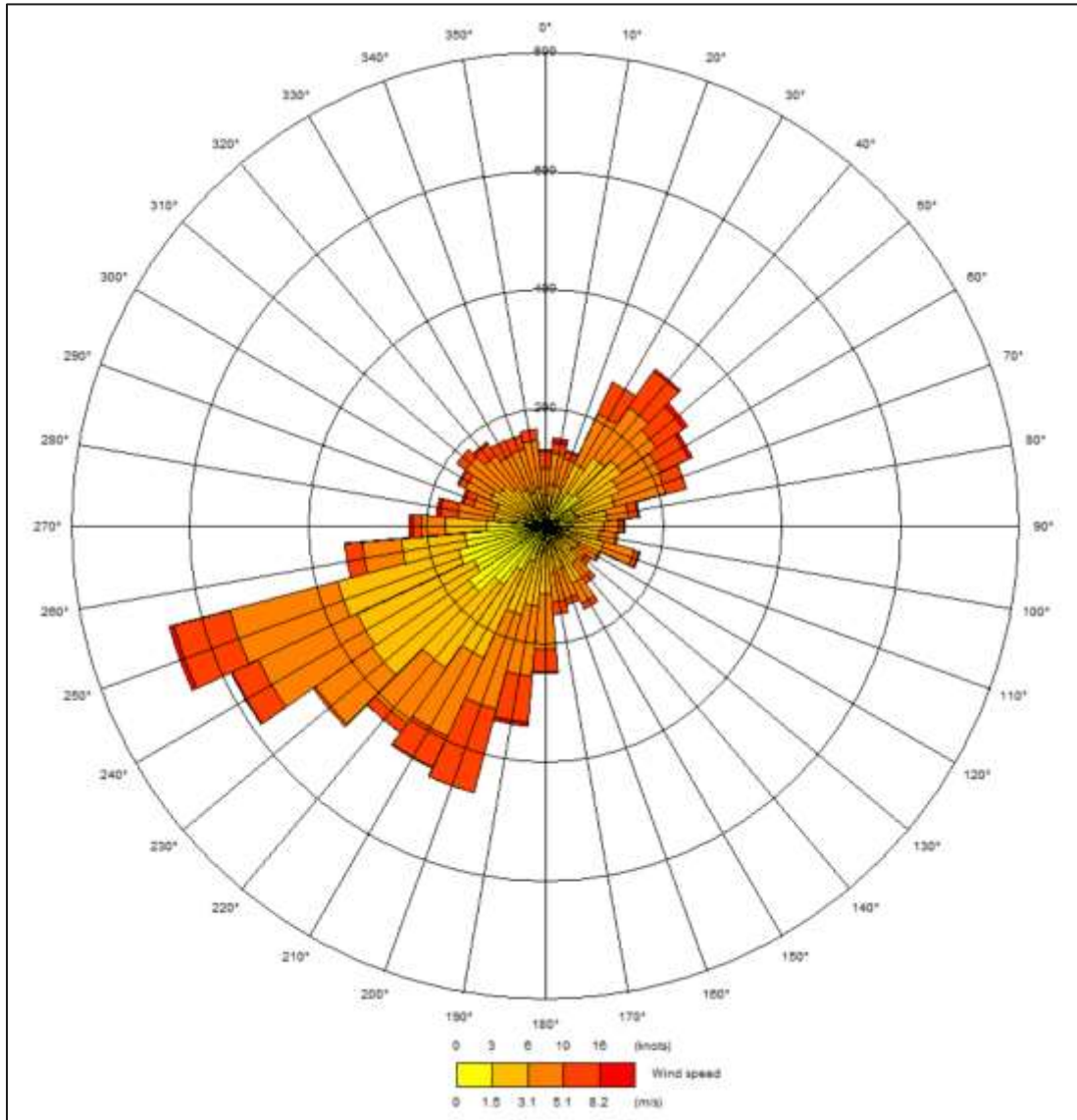


Figure R: Wind Rose for Brize Norton Meteorological Station (2022)

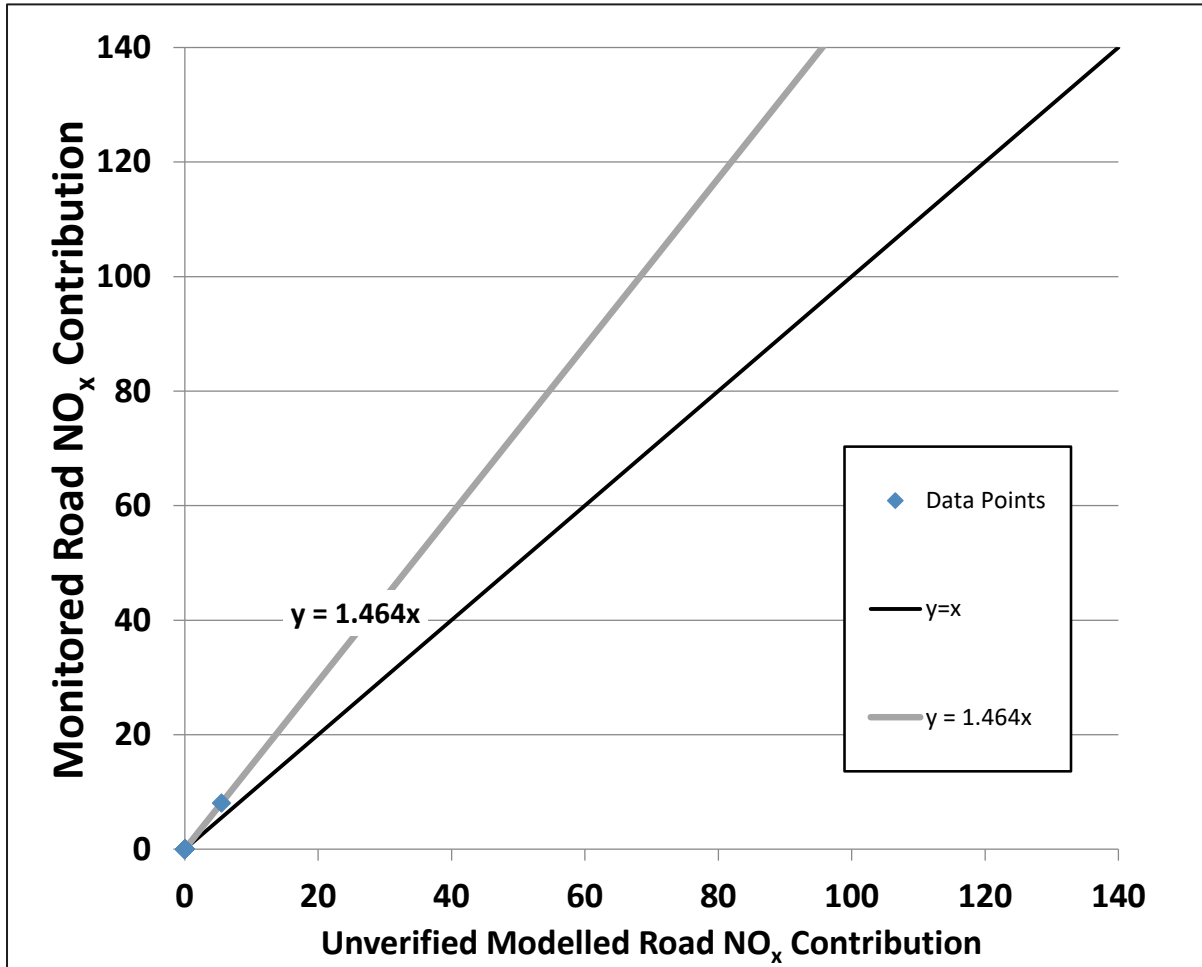


Figure S: Comparison of Modelled vs. Monitored Road NO_x Contribution (1.464)