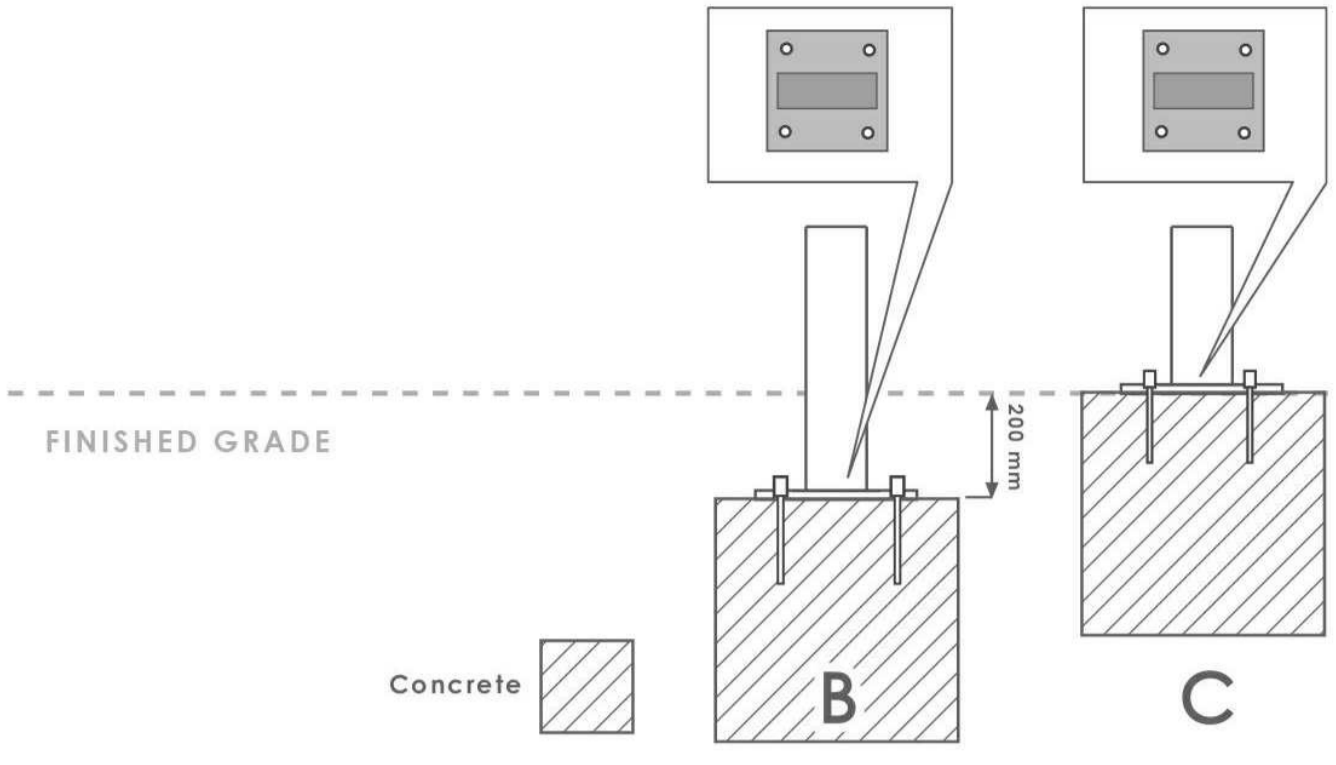
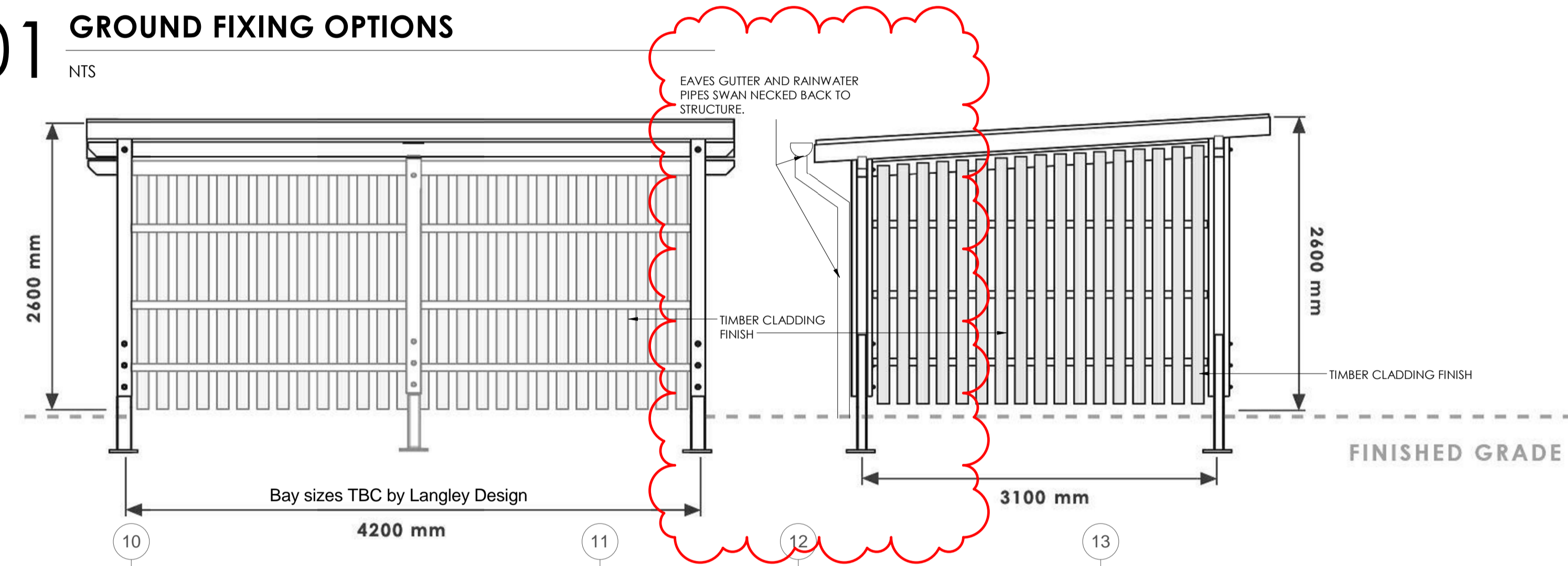


ISO A1 - 904mmx641mm



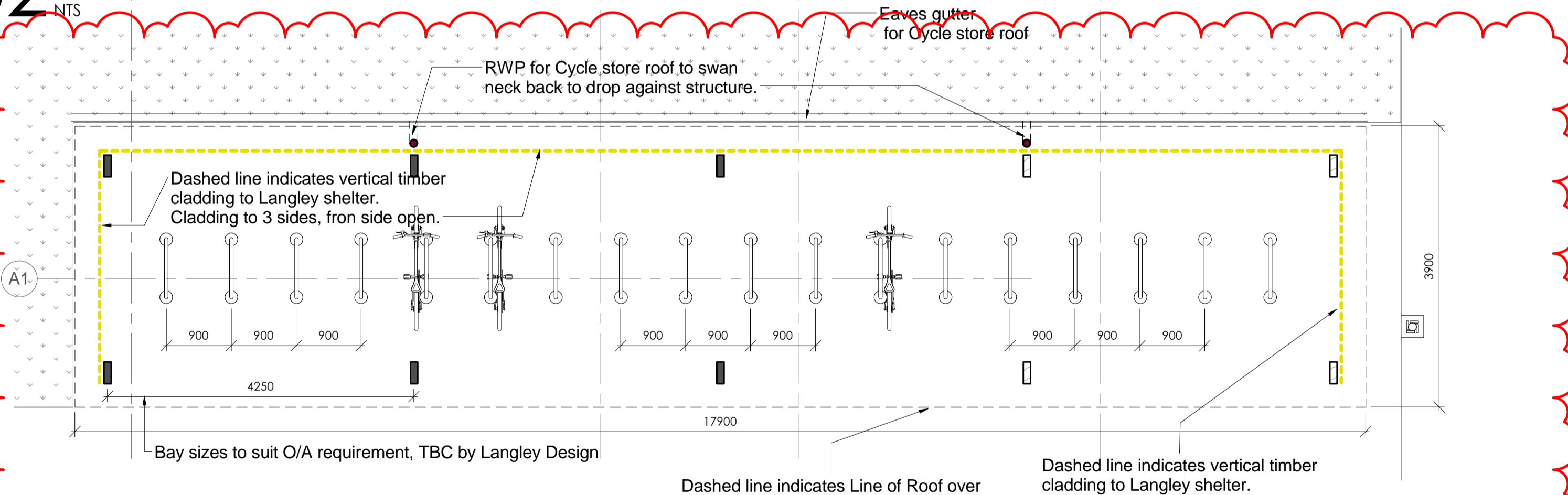
01 GROUND FIXING OPTIONS

NTS



02 CYCLE SHELTER BAY ELEVATIONS

NTS



03 CYCLE SHELTER PLAN

1:50



PRECEDENT IMAGE 01



PRECEDENT IMAGE 02

04 PRECEDENT IMAGES

NOTES:
REFER TO NBS CLAUSE Q50-210 + 210A
O/A Size of shelter is to incorporate 18No. Sheffield Cycle Hoops at 900mm Centres

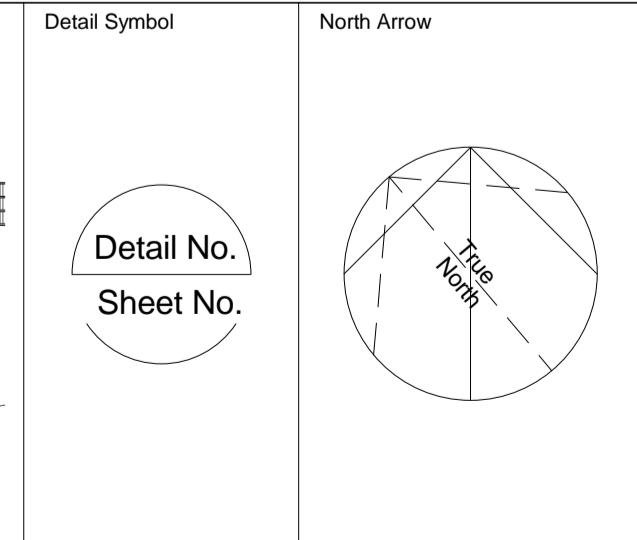
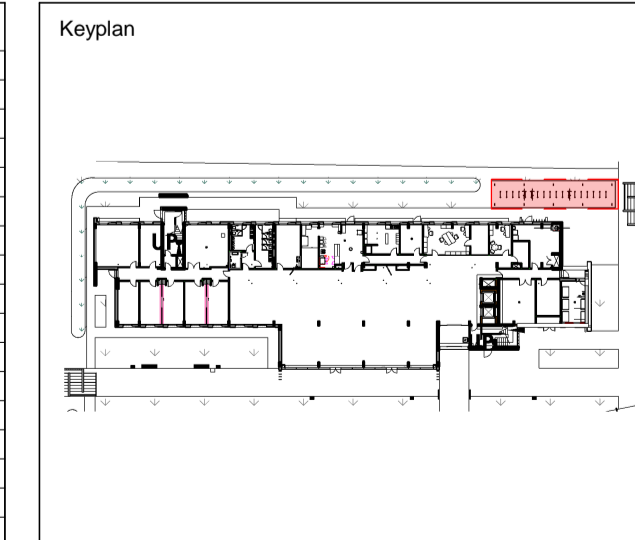
This drawing has been prepared solely for the use of LONDON & REGIONAL and there are no representations of any kind made by Norr Consultants Limited to any party with whom Norr Consultants Limited has not entered into a contract

This drawing must not be used, reproduced or revised without written permission.

This drawing shall not be used for construction purposes until the "CONSTRUCTION" status appears under the Sheet Status.

Constructors must only work to figured dimensions which are to be checked on site. Do not scale from hard copy drawings

DATE	REVISION	REV	DRW	CHK
14.02.18	First Issue	T1	AC	PA
01.03.18	Full Tender Issue	T2	AC	PA
31-08-18	Employers Requirement Issue. Revisions highlighted.	T3	PA	PA



NORR
NORR Consultants Ltd.
An Ingenium International Company

Tennyson House,
159 - 165 Great Portland Street,
London, W1W 5PA, England
T:+44(0)207 580 0400 F:+44(0)207 580 6680
www.norr.com

Project LONDON & REGIONAL		Drawing Title CYCLE STORE DETAILS	
Project BICESTER GATEWAY HOTEL		Sheet Status ER1 - EMPLOYERS REQUIREMENTS	
Drawn CF/GYL	Date 01/03/2018	Project No. IALN17-0034	Rev. T3
Checked AC	Date 01/03/2018	Drawing No. DE-A-6803	
Scale As indicated @ A1			