

**HOLIDAY INN EXPRESS - BICESTER - External Signage**

**ITEM 01 (Qty 2) XLSM - 7  
Monogram**

Built up aluminium box displaying a flex face panel.  
Illuminated by white LED illumination.

**Holiday Inn**

Individual built up aluminium letters with a clear acrylic face panels.  
Complete with white translucent film with a green digital print  
to the face. **GREEN BY DAY & ILLUMINATE GREEN BY NIGHT.**  
Illuminated by white LED illumination.

**Express**

Individual built up aluminium letters with a clear acrylic face panels.  
Complete with white translucent film applied to rear of face panels.  
Blue dual vision perforated film to face of face panels.  
Illuminated by white LED illumination.

**BLUE BY DAY & ILLUMINATE WHITE BY NIGHT.**

Scale 1:50



- **ELECTRICAL POINT BEHIND SIGN INSIDE, ABOVE CEILING**  
logo - 75kg and 16 amp  
Holiday Inn - 50kg and 16amp  
Express - 60kg and 16amp



- **ELECTRICAL POINT BEHIND SIGN INSIDE, ABOVE CEILING**  
logo - 40kg and 10 amp  
Holiday Inn - 45kg and 8amp  
Express - 35kg and 8amp

**ITEM 02 (Qty 2) VLM - 5  
Monogram**

Built up aluminium box displaying a flex face panel.  
Illuminated by white LED illumination.

**Holiday Inn**

Individual built up aluminium letters with a clear acrylic face panels.  
Complete with white translucent film with a green digital print  
to the face. **GREEN BY DAY & ILLUMINATE GREEN BY NIGHT.**  
Illuminated by white LED illumination.

**Express**

Individual built up aluminium letters with a clear acrylic face panels.  
Complete with white translucent film applied to rear of face panels.  
Blue dual vision perforated film to face of face panels.  
Illuminated by white LED illumination.

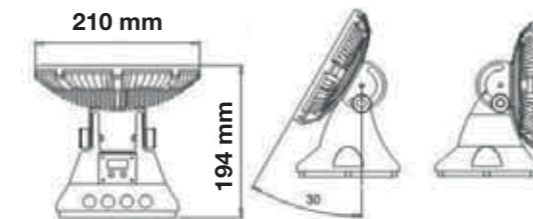
**BLUE BY DAY & ILLUMINATE WHITE BY NIGHT.**

Scale 1:50

**ITEM 03 (Qty 8)**

36W LED Floodlights with **BLUE** filters to either side of  
each set of letters/logo to give upcast illumination.

Scale 1:10



- **ELECTRICAL POINT NEXT TO LIGHTS TO CONNECT TO.**  
**THE EXACT LOCATION TO BE DETERMINED BY ELECTRICAL CONSIDERATIONS AND MAINTENANCE REASONS - TBC**

**ITEM 04 (Qty 2)**

LED Floodlights with **BLUE** filters to either side of  
main entrance.

Scale 1:10



- **ELECTRICAL POINT NEXT TO LIGHTS TO CONNECT TO**



**HOLIDAY INN EXPRESS.  
BICESTER.**  
GATEWAY BUSINESS PARK,  
WENDLEBURY ROAD,  
CHESTERTON,  
BICESTER,  
OX25 2BX.

135667 - REV B  
25/09/19 - JAC

COPYRIGHT :  
THE ATTACHED DESIGNS AND ILLUSTRATIONS  
ARE INTENDED SOLELY FOR, AND SHOULD  
ONLY BE USED BY, THOSE TO WHOM THIS  
DESIGN SPECIFICATION IS ADDRESSED.

THE CONTENTS ARE STRICTLY  
PRIVATE AND CONFIDENTIAL.  
ANY FORM OF REPRODUCTION,  
DISSEMINATION, COPYING, DISCLOSURE,  
MODIFICATION OR DISTRIBUTION IS STRICTLY  
PROHIBITED WITHOUT THE PRIOR WRITTEN  
CONSENT OF ASHLEIGH SIGNS LTD

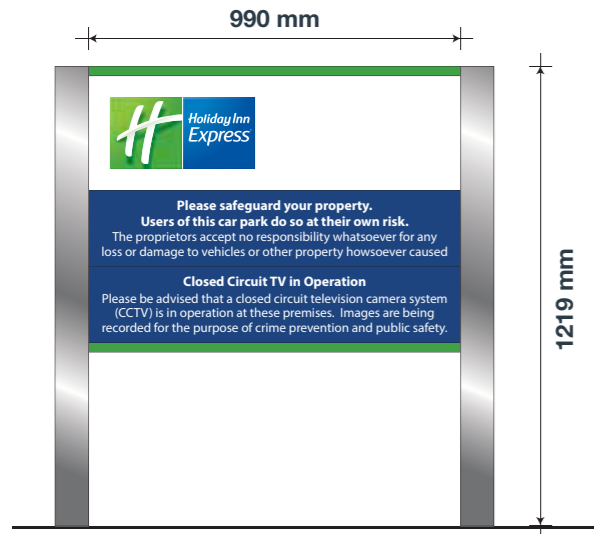
(COMPANY NUMBER : 1325080)  
WHOSE REGISTERED ADDRESS IS:  
ASHLEIGH HOUSE, BECKBRIDGE ROAD,  
NORMANTON INDUSTRIAL ESTATE,  
NORMANTON, WF6 1TE

# HOLIDAY INN EXPRESS - BICESTER - External Signage

## ITEM 05 (Qty 3) XCPD-2 Car Park Disclaimer Sign

SignComp aluminium panels finished white & blue complete with applied vinyl.  
Extruded aluminium posts painted grey.

Scale 1:20

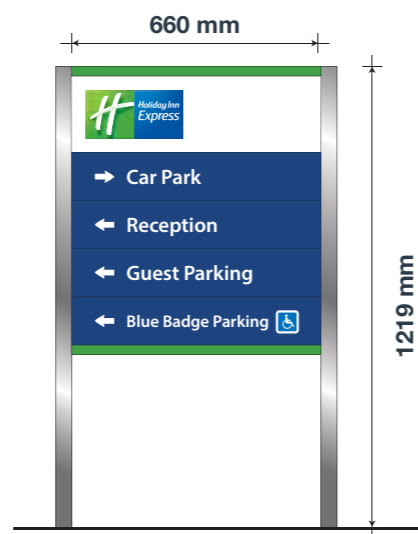


**FIXING INTO EARTH**

## ITEM 06 (Qty 1) XCPD-2 Car Park Directional Sign

SignComp aluminium panels finished white & blue complete with applied vinyl.  
Extruded aluminium posts painted grey.

Scale 1:20



**FIXING INTO EARTH**

## ITEM 08A (Qty 4) XDIS-3 Blue Badge Parking Sign

SignComp aluminium panels finished white & blue complete with applied vinyl.  
Extruded aluminium posts painted grey.

Scale 1:20



**FIXING INTO EARTH**

## ITEM 07 (Qty 1) XP-20 Pylon Sign

Featuring:

Header Box  
• An illuminated box complete with translucent acrylic faces. Sides & top to be painted green & blue.

Lower white panel

• Formed aluminium panels finished white fret cut & backed up.

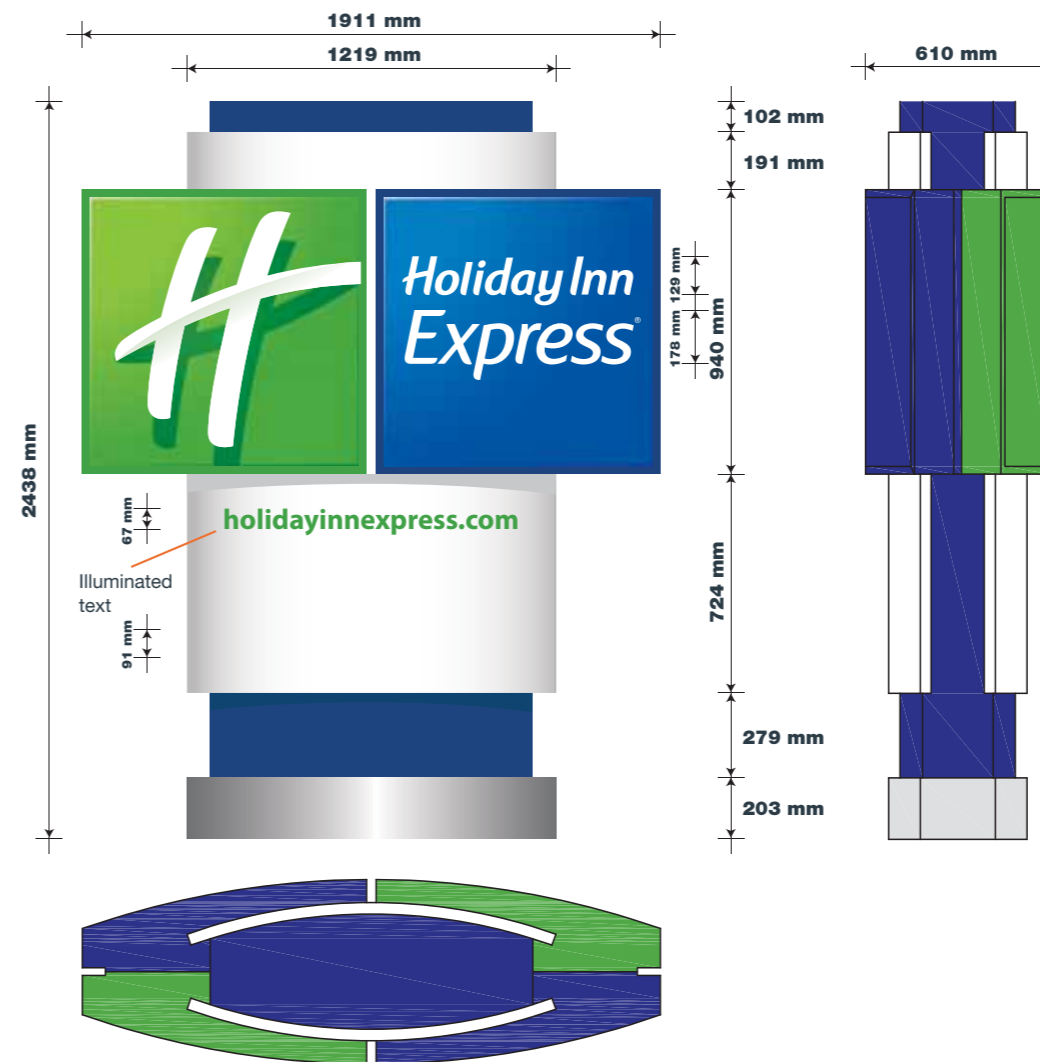
Blue pedestal

• Formed aluminium base painted blue front & back. Sides to illuminate.

Base cover

• Fabricated base cover with a brushed finish.

Scale 1:25



• **ELECTRICAL POINT AT BASE OF SIGN**

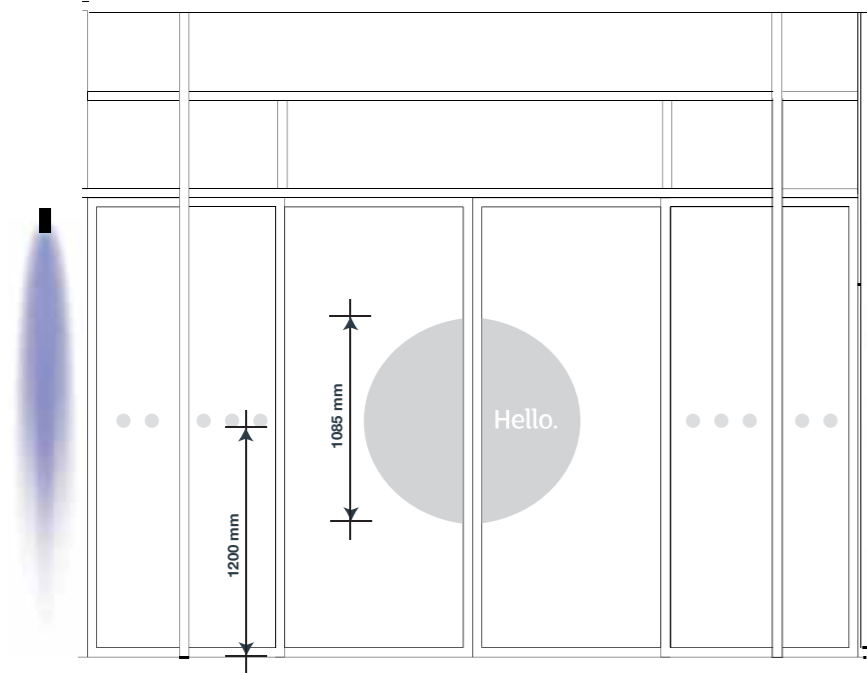
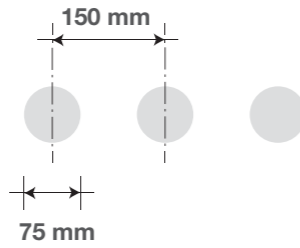
**HOLIDAY INN EXPRESS - BICESTER - External Signage**

**ITEM 08 (Qty 6mts) HIEX-ED01**

**Manifestations**

Reverse applied dusted (Glass Decor) MACal 798-02 vinyls to glazing.

Scale 1:10/40

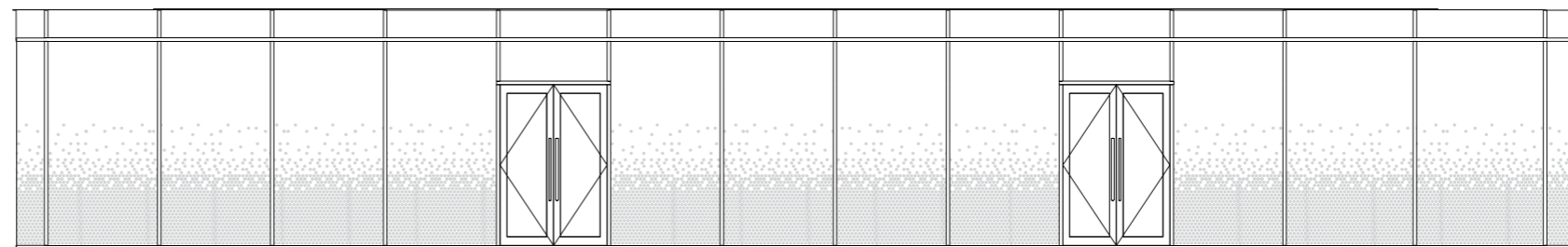
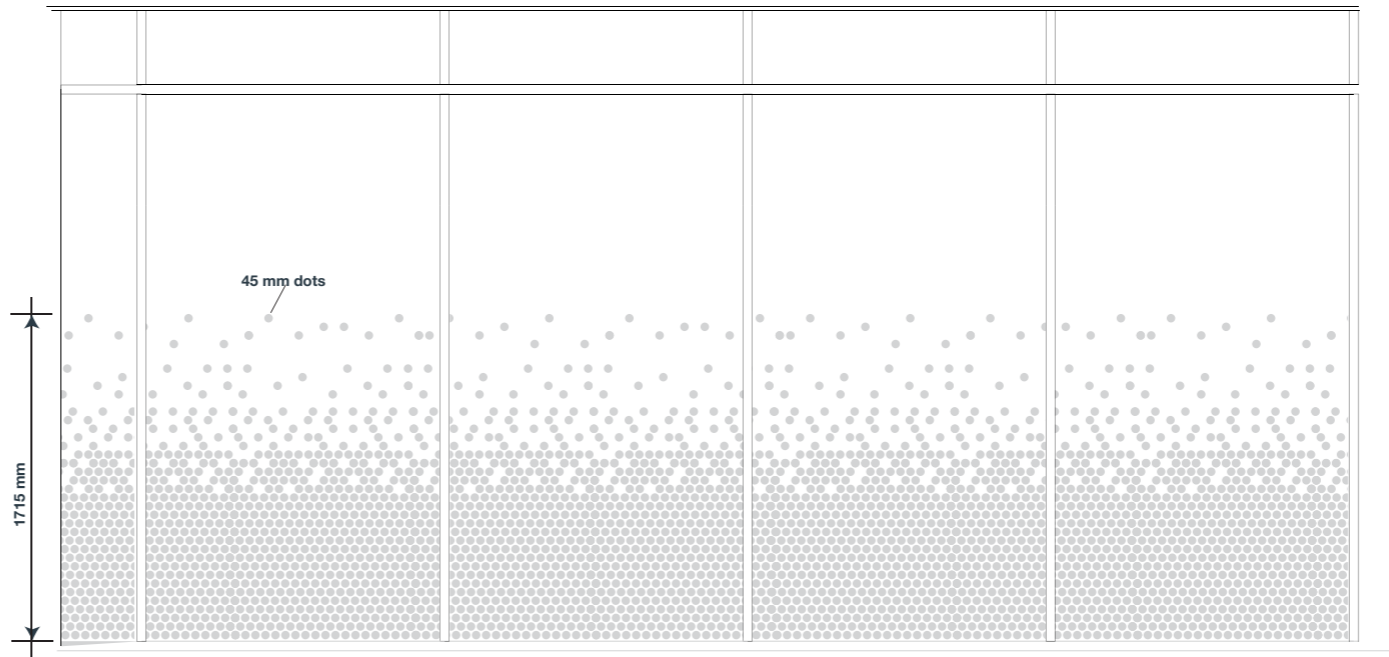


**ITEM 08b (Qty 23mts) HIEXGen4 - Brk 02**

**Manifestations**

Reverse applied dusted (Glass Decor) MACal 798-02 vinyls to glazing.

Scale 1:40/50



**HOLIDAY INN EXPRESS.  
BICESTER.**  
GATEWAY BUSINESS PARK,  
WENDLEBURY ROAD,  
CHESTERTON,  
BICESTER,  
OX25 2BX.

**135667 - REV B**  
25/09/19 - JAC

**COPYRIGHT :**  
THE ATTACHED DESIGNS AND ILLUSTRATIONS  
ARE INTENDED SOLELY FOR, AND SHOULD  
ONLY BE USED BY, THOSE TO WHOM THIS  
DESIGN SPECIFICATION IS ADDRESSED.

**THE CONTENTS ARE STRICTLY  
PRIVATE AND CONFIDENTIAL.**  
ANY FORM OF REPRODUCTION,  
DISSEMINATION, COPYING, DISCLOSURE,  
MODIFICATION OR DISTRIBUTION IS STRICTLY  
PROHIBITED WITHOUT THE PRIOR WRITTEN  
CONSENT OF ASHLEIGH SIGNS LTD

(COMPANY NUMBER : 1325080)  
WHOSE REGISTERED ADDRESS IS:  
ASHLEIGH HOUSE, BECKBRIDGE ROAD,  
NORMANTON INDUSTRIAL ESTATE,  
NORMANTON, WF6 1TE



SOUTH EAST ELEVATION  
1 : 200 @A3

08b

08b

08b

04

08

04

03

03

The exact location of floodlights to be determined by electrical considerations and maintenance reasons - TBC

Electrical feed

Electrical feed

Electrical feed



**Holiday Inn Express**

**HOLIDAY INN EXPRESS. BICESTER.**  
GATEWAY BUSINESS PARK,  
WENDLEBURY ROAD,  
CHESTERTON,  
BICESTER,  
OX25 2BX.

**135667 - REV B**  
25/09/19 - JAC

**COPYRIGHT :**  
THE ATTACHED DESIGNS AND ILLUSTRATIONS ARE INTENDED SOLELY FOR, AND SHOULD ONLY BE USED BY, THOSE TO WHOM THIS DESIGN SPECIFICATION IS ADDRESSED.

**THE CONTENTS ARE STRICTLY PRIVATE AND CONFIDENTIAL.**  
ANY FORM OF REPRODUCTION, DISSEMINATION, COPYING, DISCLOSURE, MODIFICATION OR DISTRIBUTION IS STRICTLY PROHIBITED WITHOUT THE PRIOR WRITTEN CONSENT OF ASHLEIGH SIGNS LTD

(COMPANY NUMBER : 1325080)  
WHOSE REGISTERED ADDRESS IS:  
ASHLEIGH HOUSE, BECKBRIDGE ROAD,  
NORMANTON INDUSTRIAL ESTATE,  
NORMANTON, WF6 1TE

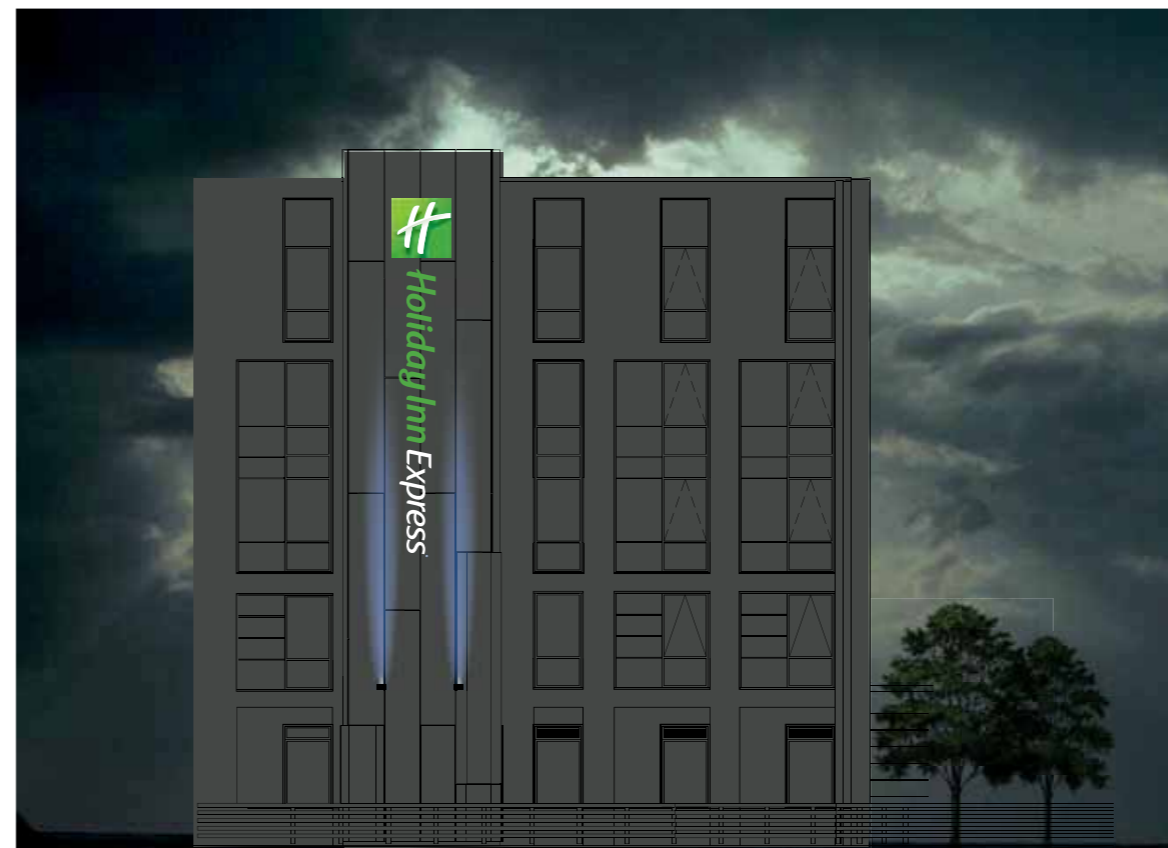


NORTH WEST ELEVATION

1 : 200 @A3

Electrical feed

The exact location of floodlights to be determined by electrical considerations and maintenance reasons - TBC



**Holiday Inn Express**

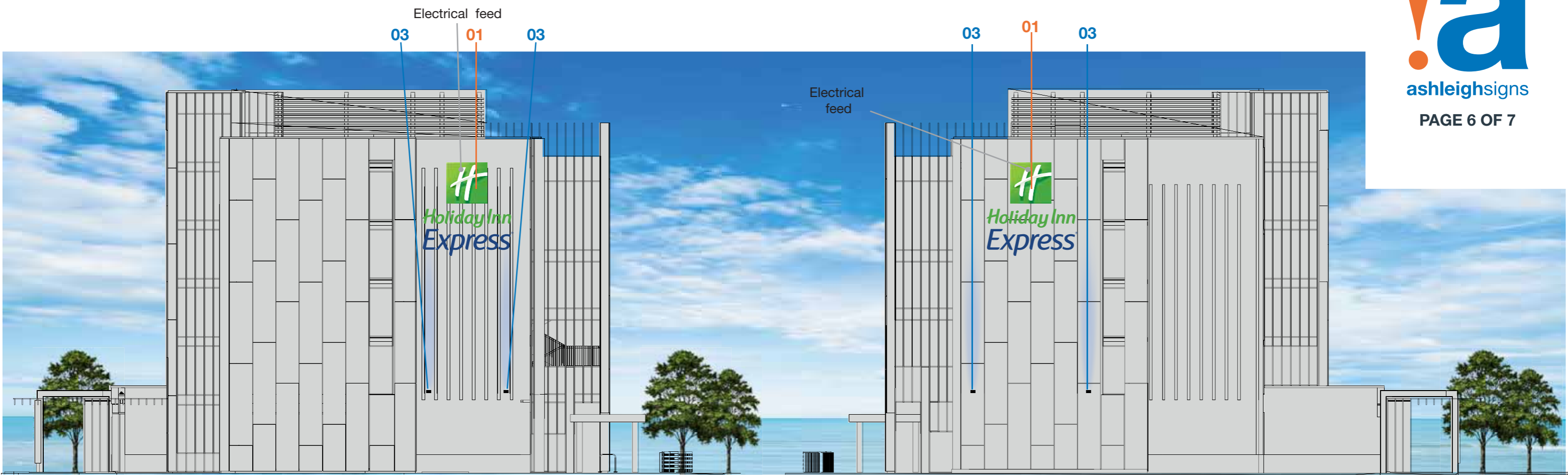
**HOLIDAY INN EXPRESS.  
BICESTER.  
GATEWAY BUSINESS PARK,  
WENDLEBURY ROAD,  
CHESTERTON,  
BICESTER,  
OX25 2BX.**

**135667 - REV B  
25/09/19 - JAC**

**COPYRIGHT :**  
THE ATTACHED DESIGNS AND ILLUSTRATIONS ARE INTENDED SOLELY FOR, AND SHOULD ONLY BE USED BY, THOSE TO WHOM THIS DESIGN SPECIFICATION IS ADDRESSED.

**THE CONTENTS ARE STRICTLY PRIVATE AND CONFIDENTIAL.**  
ANY FORM OF REPRODUCTION, DISSEMINATION, COPYING, DISCLOSURE, MODIFICATION OR DISTRIBUTION IS STRICTLY PROHIBITED WITHOUT THE PRIOR WRITTEN CONSENT OF ASHLEIGH SIGNS LTD

(COMPANY NUMBER : 1325080)  
WHOSE REGISTERED ADDRESS IS:  
ASHLEIGH HOUSE, BECKBRIDGE ROAD,  
NORMANTON INDUSTRIAL ESTATE,  
NORMANTON, WF6 1TE

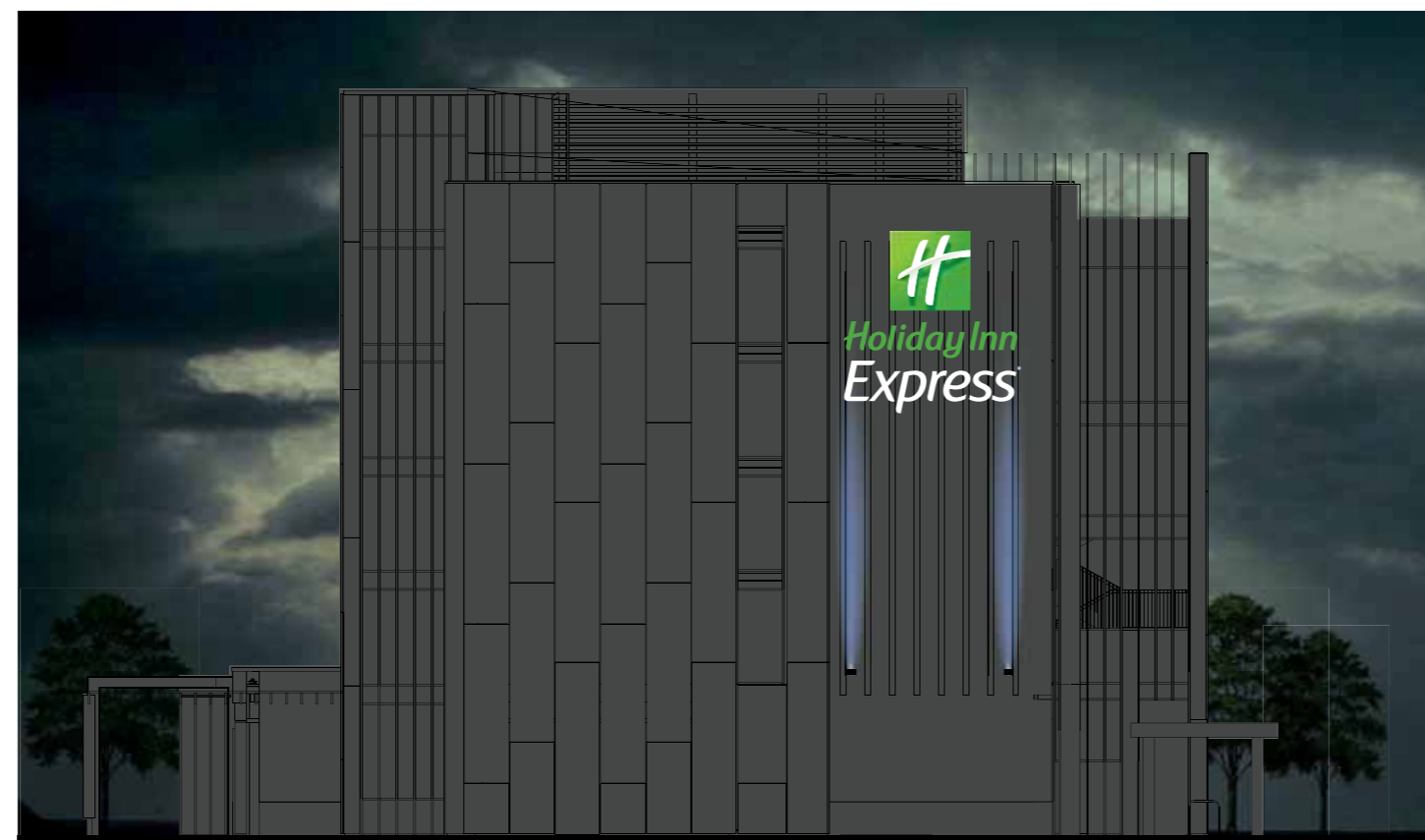


NORTH EAST ELEVATION

1 : 200 @A3

SOUTH WEST ELEVATION

1 : 200 @A3



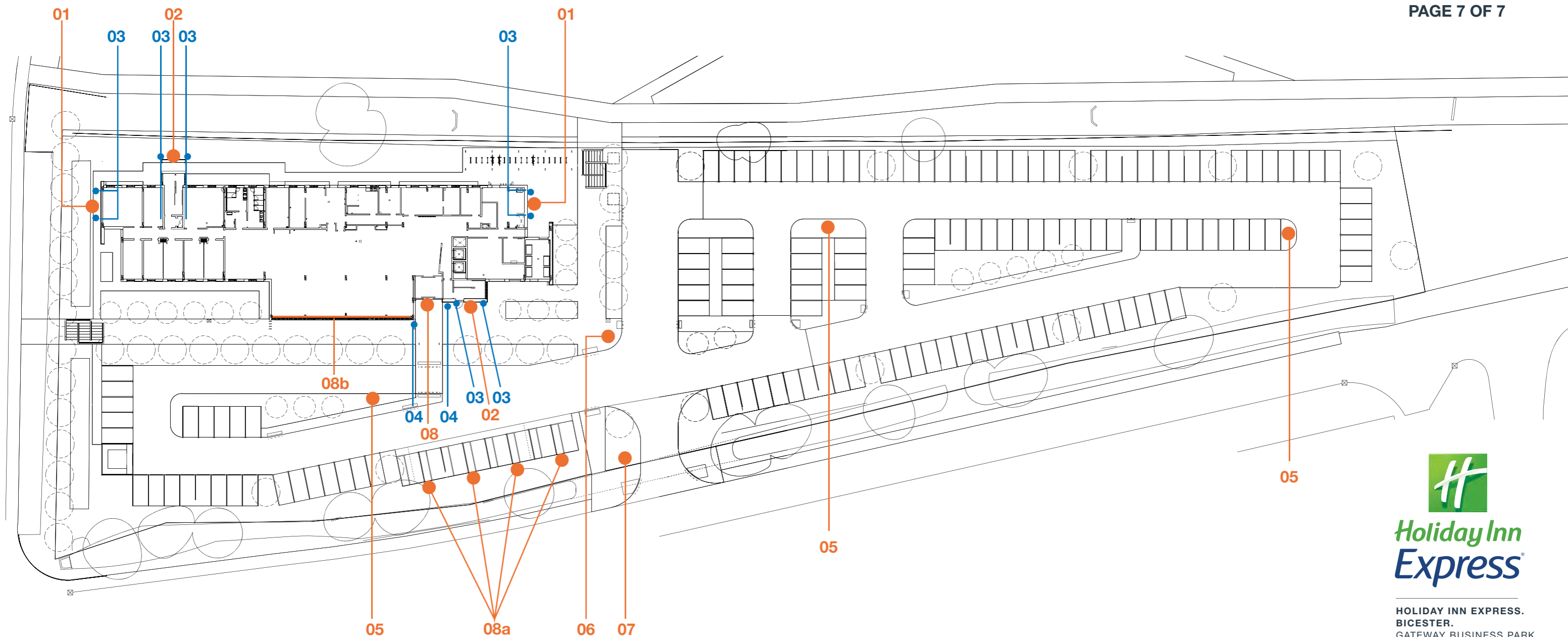
**HOLIDAY INN EXPRESS.  
BICESTER.**  
GATEWAY BUSINESS PARK,  
WENDLEBURY ROAD,  
CHESTERTON,  
BICESTER,  
OX25 2BX.

**135667 - REV B**  
25/09/19 - JAC

**COPYRIGHT :**  
THE ATTACHED DESIGNS AND ILLUSTRATIONS  
ARE INTENDED SOLELY FOR, AND SHOULD  
ONLY BE USED BY, THOSE TO WHOM THIS  
DESIGN SPECIFICATION IS ADDRESSED.

**THE CONTENTS ARE STRICTLY  
PRIVATE AND CONFIDENTIAL.**  
ANY FORM OF REPRODUCTION,  
DISSEMINATION, COPYING, DISCLOSURE,  
MODIFICATION OR DISTRIBUTION IS STRICTLY  
PROHIBITED WITHOUT THE PRIOR WRITTEN  
CONSENT OF ASHLEIGH SIGNS LTD

(COMPANY NUMBER : 1325080)  
WHOSE REGISTERED ADDRESS IS:  
ASHLEIGH HOUSE, BECKBRIDGE ROAD,  
NORMANTON INDUSTRIAL ESTATE,  
NORMANTON, WF6 1TE



**HOLIDAY INN EXPRESS.**  
**BICESTER.**  
 GATEWAY BUSINESS PARK,  
 WENDLEBURY ROAD,  
 CHESTERTON,  
 BICESTER,  
 OX25 2BX.

**135667 - REV B**  
 25/09/19 - JAC

**COPYRIGHT :**  
 THE ATTACHED DESIGNS AND ILLUSTRATIONS  
 ARE INTENDED SOLELY FOR, AND SHOULD  
 ONLY BE USED BY, THOSE TO WHOM THIS  
 DESIGN SPECIFICATION IS ADDRESSED.

**THE CONTENTS ARE STRICTLY  
 PRIVATE AND CONFIDENTIAL.**  
 ANY FORM OF REPRODUCTION,  
 DISSEMINATION, COPYING, DISCLOSURE,  
 MODIFICATION OR DISTRIBUTION IS STRICTLY  
 PROHIBITED WITHOUT THE PRIOR WRITTEN  
 CONSENT OF ASHLEIGH SIGNS LTD

(COMPANY NUMBER : 1325080)  
 WHOSE REGISTERED ADDRESS IS:  
 ASHLEIGH HOUSE, BECKBRIDGE ROAD,  
 NORMANTON INDUSTRIAL ESTATE,  
 NORMANTON, WF6 1TE