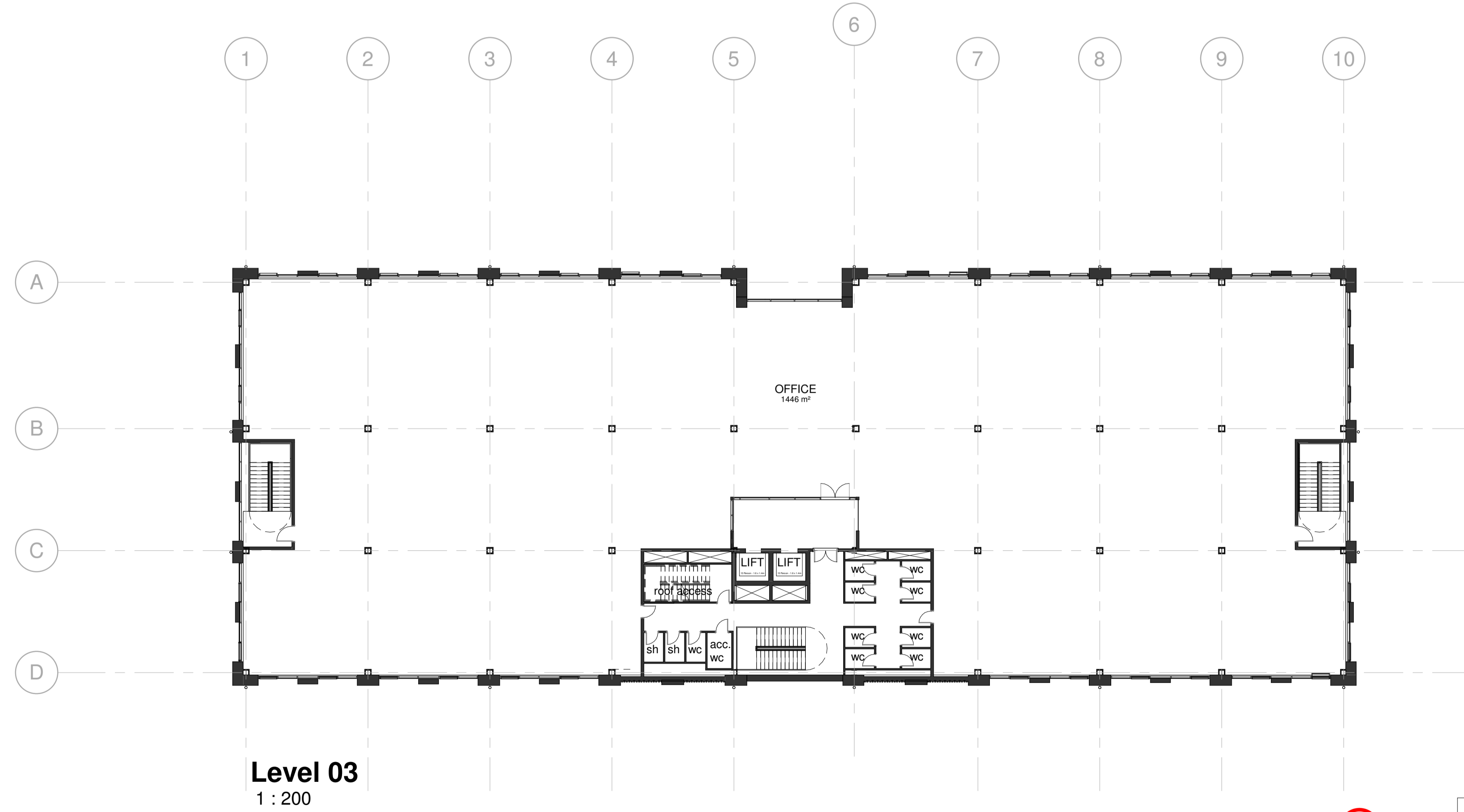


Level 02
1 : 200



Level 03
1 : 200

Ground Floor:	GIA 17,900 sqft (1663m2)	NIA 14,650 sqft (1361m2)
First Floor:	GIA 17,342 sqft (1611m2)	NIA 15,198 sqft (1412m2)
Second Floor:	GIA 17,900 sqft (1663m2)	NIA 15,769 sqft (1465m2)
Third Floor:	GIA 17,900 sqft (1663m2)	NIA 15,564 sqft (1446m2)
Total:	GIA 71,042 sqft (6600m2)	NIA 61,181 sqft (5684m2)

PROJECT BICESTER ARC - PLOT1 - OFFICE BUILDING	
TITLE LEVEL 02 & 03 PLANS	

CLIENT PEVERIL SECURITIES		
DRAWN BY DW	CHECKED BY .	DATE 03.04.23
SCALE (@ A1) 1 : 200	PROJECT NUMBER 16SK109	
DRAWING NUMBER A103	REV B	
B - Internal layout altered		