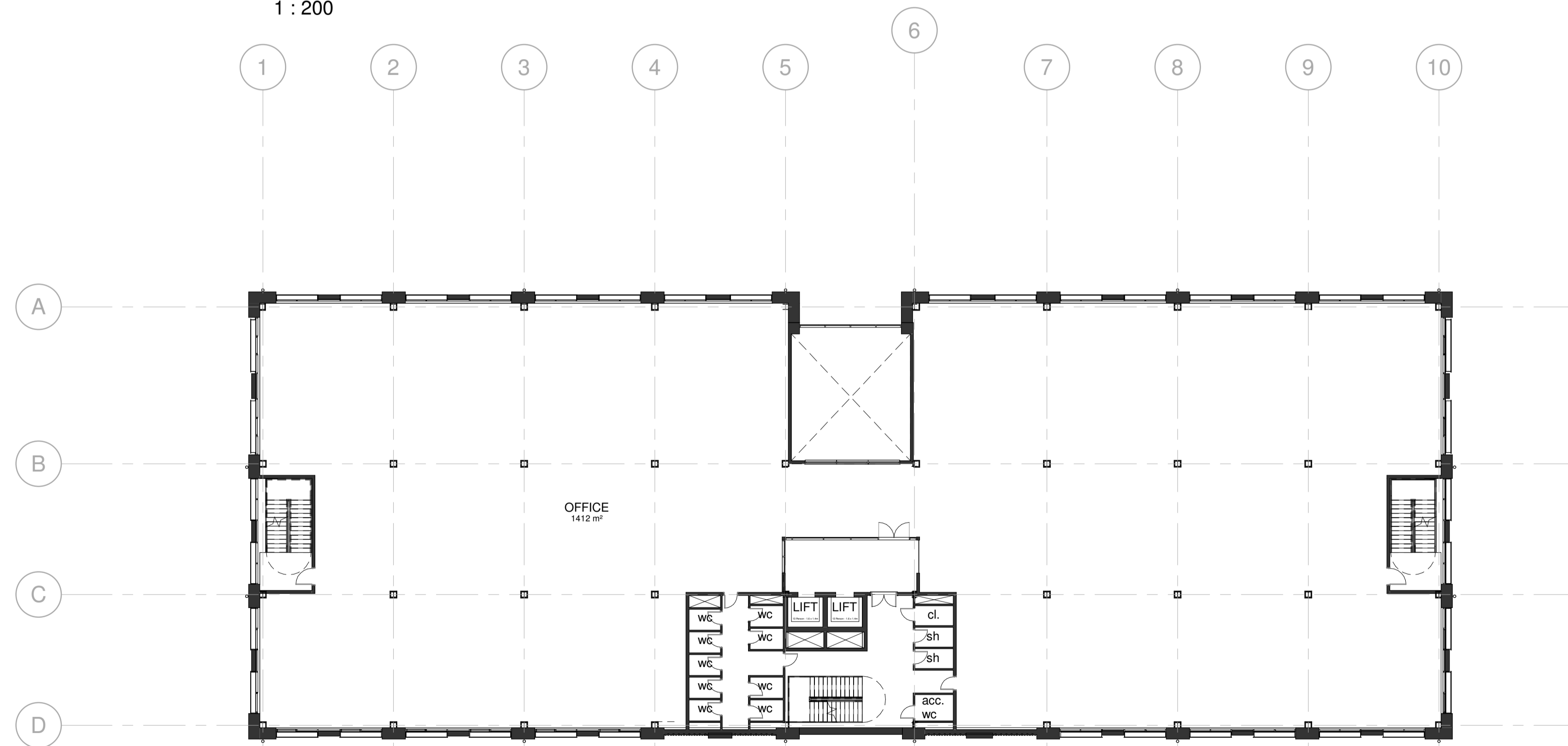


**Level 00**  
1 : 200



**Level 01**  
1 : 200

Ground Floor:	GIA 17,900 sqft (1663m2)	NIA 14,585 sqft (1355m2)
First Floor:	GIA 17,342 sqft (1611m2)	NIA 15,080 sqft (1401m2)
Second Floor:	GIA 17,900 sqft (1663m2)	NIA 15,650 sqft (1454m2)
Third Floor:	GIA 17,900 sqft (1663m2)	NIA 15,650 sqft (1454m2)
<b>Total:</b>	<b>GIA 71,042 sqft (6600m2)</b>	<b>NIA 60,967 sqft (5664m2)</b>



PROJECT BICESTER ARC - PLOT1 - OFFICE BUILDING
TITLE LEVEL 00 & 01 PLANS

CLIENT PEVERIL SECURITIES		
DRAWN BY DW	CHECKED BY SJ	DATE 03.04.23
SCALE (@ A1) 1 : 200	PROJECT NUMBER 16SK109	
DRAWING NUMBER A102	REV B	

B - Internal layout altered