

Approximate extent of the Site

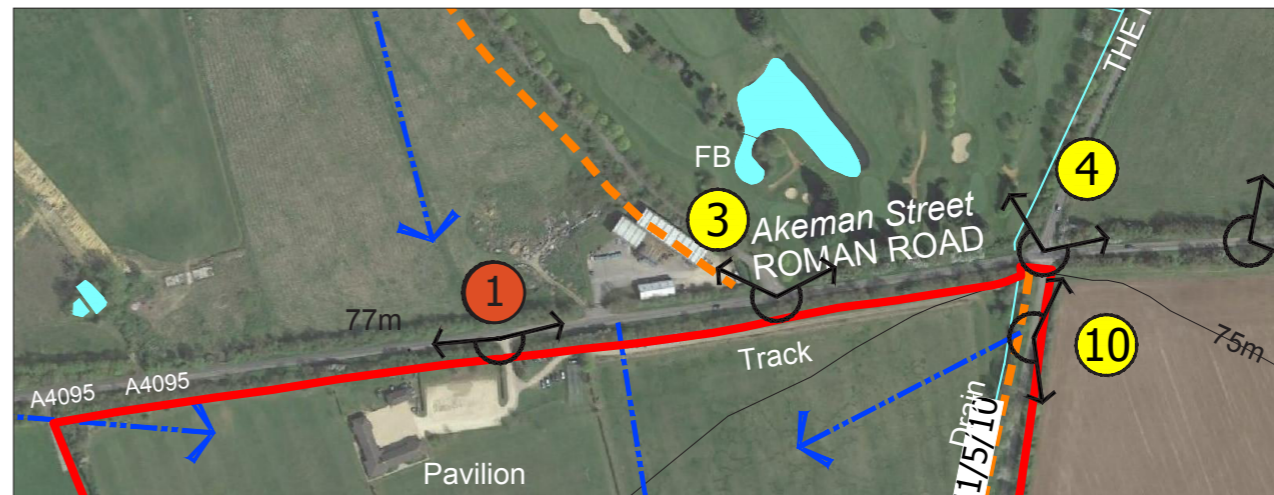


SITE CONTEXT PHOTOGRAPH 1: VIEW FROM GREEN LANE / SITE ENTRANCE, LOOKING SOUTH



Actual size extract (recommended viewing distance 300mm @A3)

Approximate distance from the Site boundary: 13m



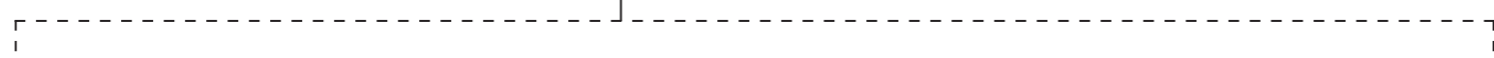
**BSA CHESTERTON,
BICESTER**

**SITE CONTEXT
PHOTOGRAPH: 1**

**DATE TAKEN: APR 2019
PROJECT NUMBER: 22391**

**BARTON
WILLMORE**

Approximate extent of the Site



Ornamental vegetation associated with Bicester Hotel golf course

Bicester Hotel Golf and Spa access road

WIG Engineering Ltd.

Green Lane overbridge of M40

Tennis court and floodlights

Golf club storage building

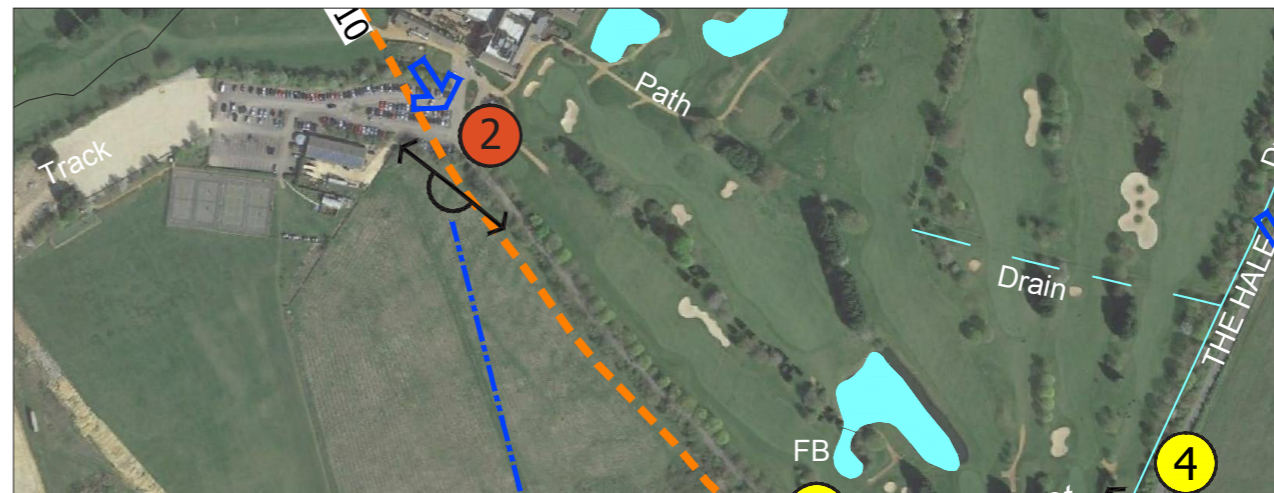


SITE CONTEXT PHOTOGRAPH 2: VIEW FROM PROW 161/6/10 SOUTH OF BICESTER HOTEL GOLF AND SPA CAR PARK, LOOKING SOUTH



Actual size extract (recommended viewing distance 300mm @A3)

Approximate distance from the Site boundary: 285m



**BSA CHESTERTON,
BICESTER**

**SITE CONTEXT
PHOTOGRAPH: 2**

**DATE TAKEN: APR 2019
PROJECT NUMBER: 22391**

**BARTON
WILLMORE**