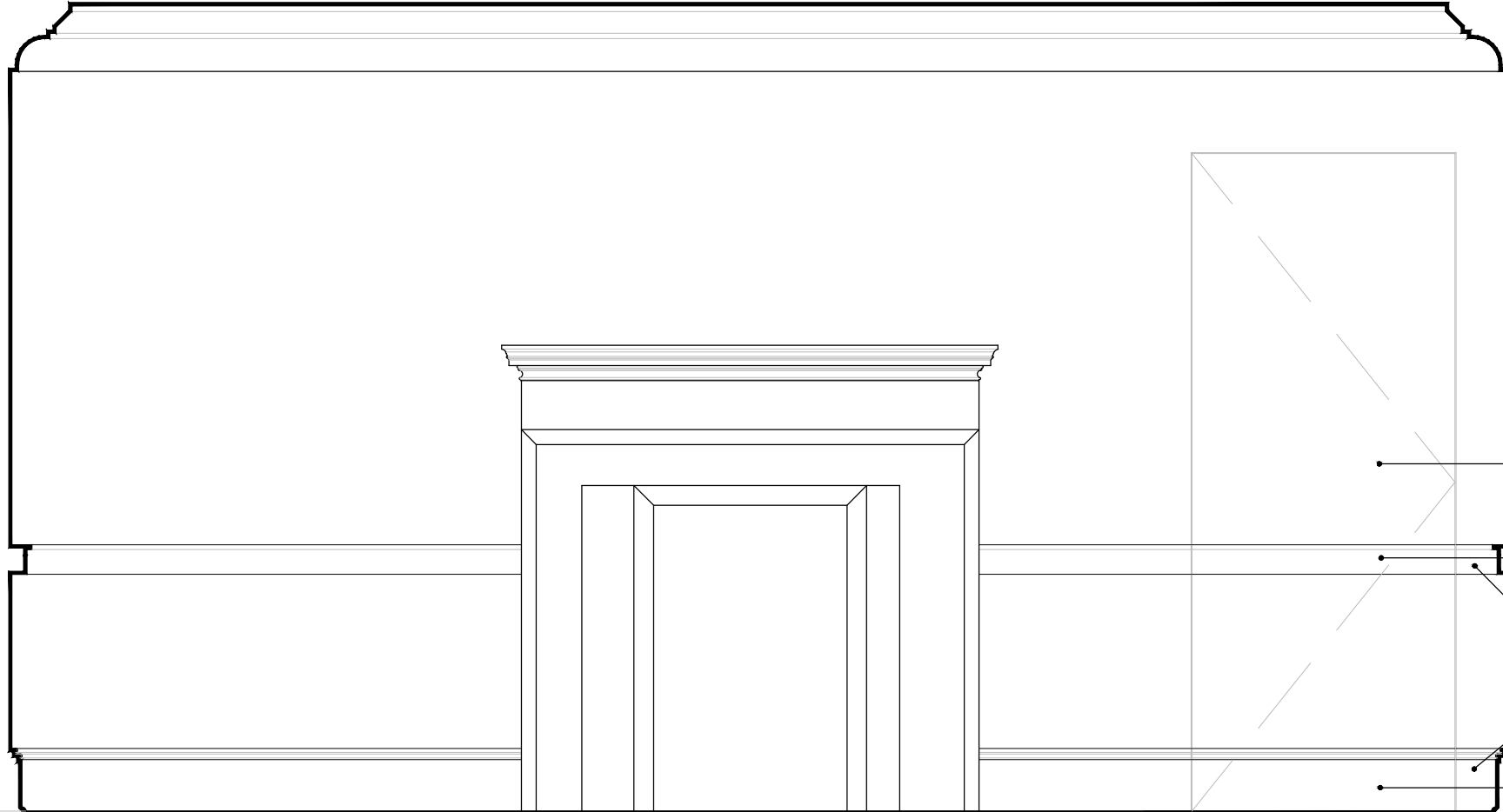
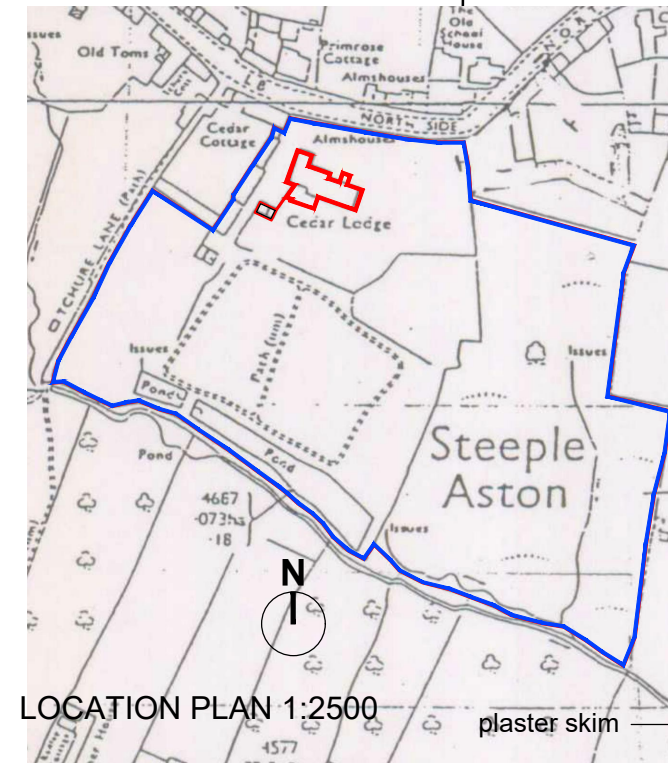


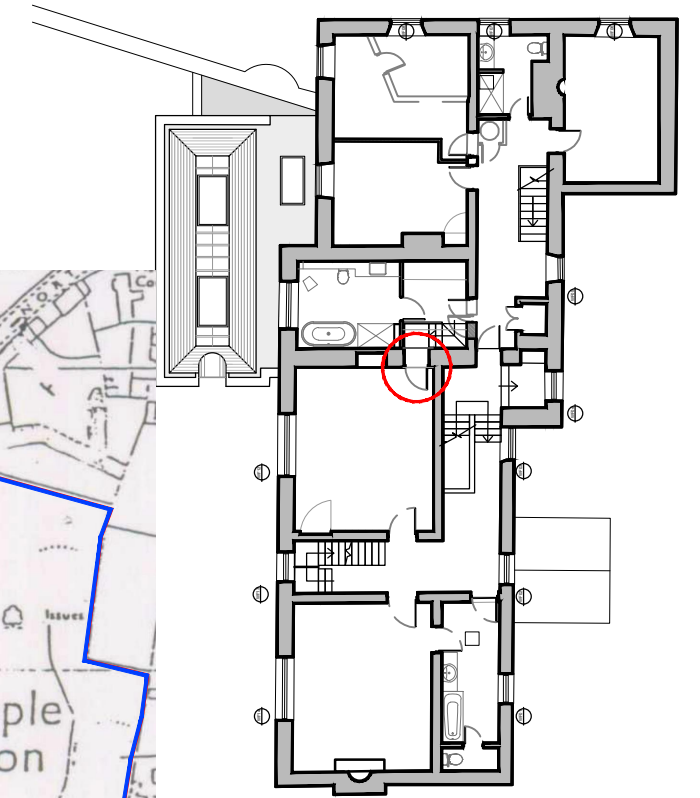
PART PLAN SHOWING JIB DOOR INTERVENTION 1:20



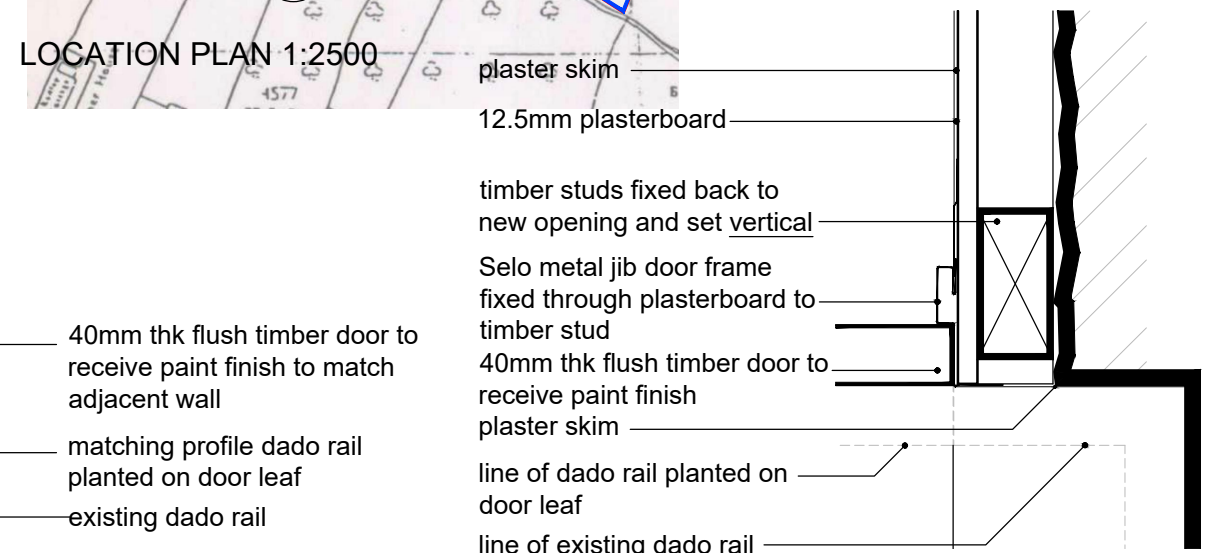
SECTIONAL ELEVATION SHOWING JIB DOOR IN WEST FACING GABLE WALL 1:20



LOCATION PLAN 1:2500



JIB DOOR LOCATION 1:250



DETAIL OF HIDDEN FRAMING TO JIB DOOR 1:5

- 40mm thk flush timber door to receive paint finish to match adjacent wall
- matching profile dado rail planted on door leaf
- existing dado rail
- existing dado rail
- matching profile skirting planted onto door leaf

- plaster skim
- 12.5mm plasterboard
- timber studs fixed back to new opening and set vertical
- Selo metal jib door frame fixed through plasterboard to timber stud
- 40mm thk flush timber door to receive paint finish
- plaster skim
- line of dado rail planted on door leaf
- line of existing dado rail

**David J Stewart Associates**  
 Chartered Architects  
 Architects • Interior Design • Town Planning • Project Management  
 Stable Barn  
 Acacia Cottage  
 South Side  
 Steeple Aston  
 Oxfordshire  
 OX25 4RT  
 T: 01295 267565  
 E: djs@djsa.co.uk

Cedar Lodge, North Side  
 Steeple Aston OX25 3SE  
 Jib Door Proposal

first issue 06.03.2019 checked  
 scale Various@A3 drawn TW  
 2018-1014-PL10