

HEYFORD PARK, BICESTER,  
VILLAGE CENTRE SOUTH

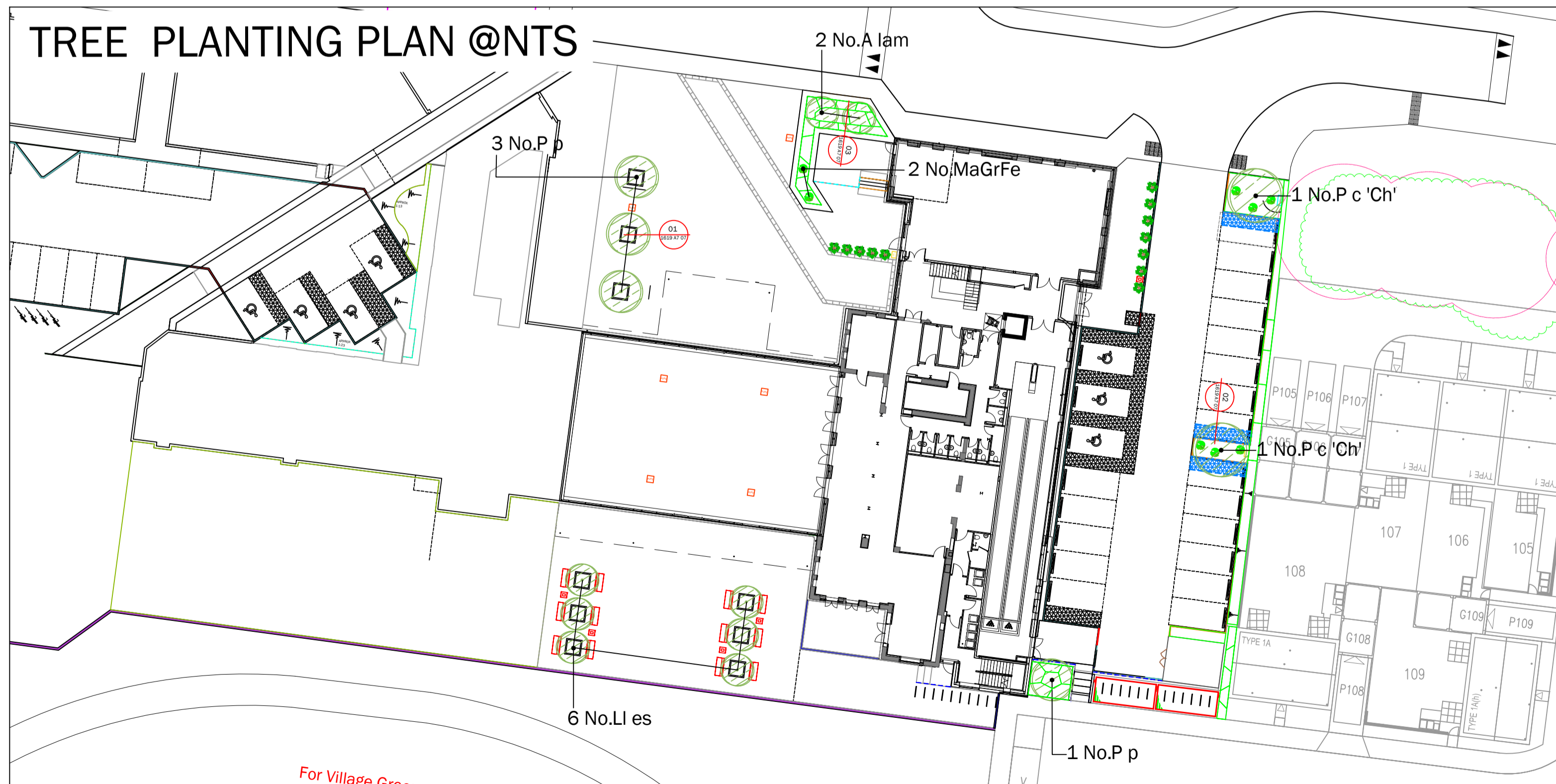
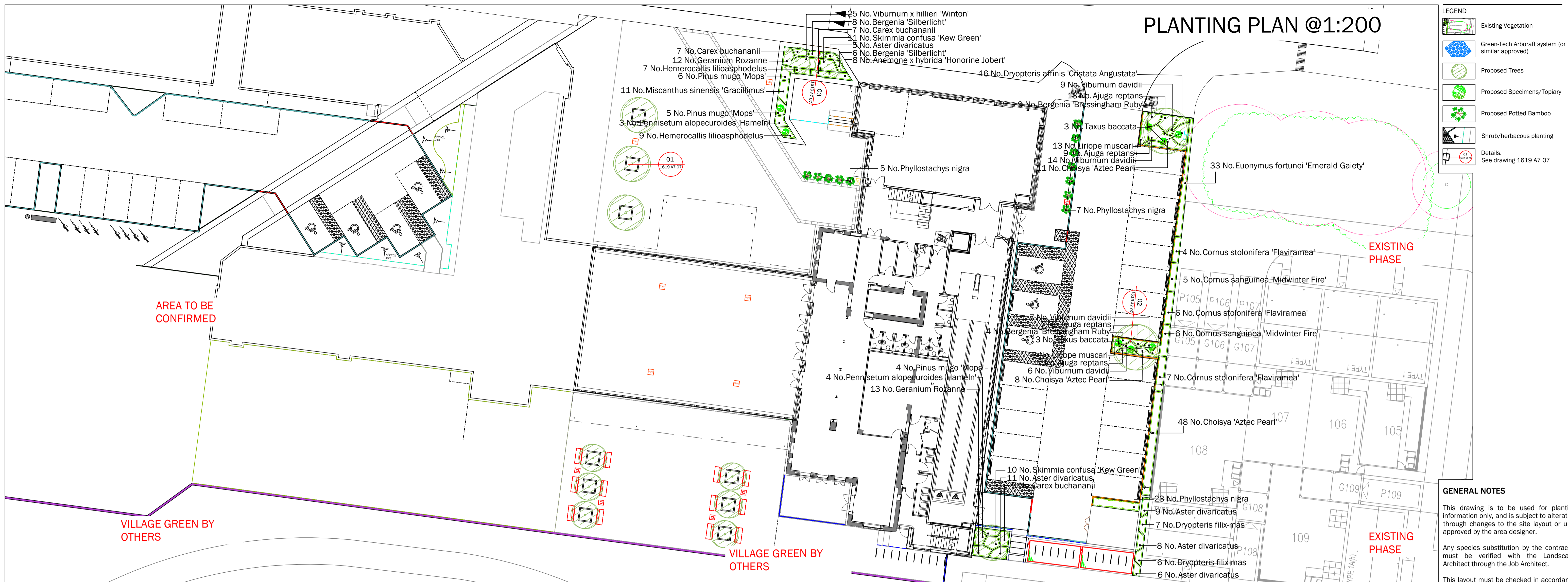
LANDSCAPE MANAGEMENT PLAN

DRAWINGS

March 2019

---





### PLANTING SCHEDULE

TREES					
Number	Plant Name	Abbreviation	Height	Girth	Specification
1 No.	Parrotia persica	P p	400-450cm	14-16cm	Extra Heavy Standard: 5 brks: 3x: RB: Clear Stem 175-200cm
2 No.	Pyrus calleryana 'Chanticleer'	P c 'Ch'	450-500cm	18-20cm	Extra Heavy Standard: clear stem minimum 200cm
3 No.	Parrotia persica	P p	350-425cm	12-14cm	Heavy Standard: 5 brks: C: Clear Stem 175-200cm
2 No.	Amelanchier lamarckii	A lam	300-350cm	14-16cm	Extra Heavy Standard: 5 brks: C: Clear Stem 175-200cm
2 No.	Magnolia grandiflora 'Ferruginea'	MaGrFe	175-200cm	8-10cm	Multi-stem: Bushy: 3 brks: C
6 No.	Ligustrum lucidum 'Excelsium Superbum'	Lies	350-400cm	18-20cm	Extra Heavy Standard: C: Clear Stem min 200cm

Total :16 No.

SHRUBS					
Number	Plant Name	Height	Container	Specification	Density
67 No.	Choisya 'Aztec Pearl'	40-60cm	5L	Bushy: 7 brks: C	5/m <sup>2</sup>
11 No.	Cornus sanguinea 'Midwinter Fire'	80-100cm	10L	Branched: 5 brks: C	2/m <sup>2</sup>
17 No.	Cornus stolonifera 'Flaviramea'	80-100cm	10L	Branched: 5 brks: C	2/m <sup>2</sup>
33 No.	Euonymus fortunei 'Emerald Gaiety'	25-30cm	5L	Bushy: 9 brks: C	5/m <sup>2</sup>
21 No.	Skimmia confusa 'Kew Green'	40-60cm	5L	Bushy: 5 brks: C	5/m <sup>2</sup>
36 No.	Viburnum davidii	30-40cm	5L	Bushy: 5 brks: C	5/m <sup>2</sup>
25 No.	Viburnum x hillieri 'Winton'	40-60cm	5L	Bushy: 7 brks: C	7/m <sup>2</sup>

Total :210 No.

HERBACEOUS					
Number	Plant Name	Container	Specification		Density
41 No.	Ajuga reptans	2L	Full Pot: Sept to April planting: British Native-orig: C		7/m <sup>2</sup>
8 No.	Anemone x hybrida 'Honorine Jobert'	5L	Full Pot: C		5/m <sup>2</sup>
23 No.	Aster divaricatus	3L	Full Pot: C		6/m <sup>2</sup>
16 No.	Aster divaricatus	3L	Full Pot: C		5/m <sup>2</sup>
13 No.	Bergenia 'Bressingham Ruby'	5L	Full Pot: C		5/m <sup>2</sup>
14 No.	Bergenia 'Silberlicht'	3L	Full Pot: C		6/m <sup>2</sup>
25 No.	Geranium Rozanne	5L	Full Pot: C		6/m <sup>2</sup>
16 No.	Hemerocallis lilioasphodelus	3L	Full Pot: C		6/m <sup>2</sup>

Total :156 No.

CONIFERS						
Number	Plant Name	Abbreviated Text	Height	Container	Specification	Density
15 No.	Pinus mugo 'Mops'	P mu 'M'	30-40cm	10-15L	Bushy: C	3/m <sup>2</sup>
6 No.	Taxus baccata	T b	40-60cm	15-20L	Ball Shape: C: Neatly Clipped	Counted

Total :21 No.

BAMBOOS					
Number	Plant Name	Height	Container	Specification	Density
23 No.	Phyllostachys nigra	80-100cm	5L	Several Shoots: 7 brks: C	5/m <sup>2</sup>
12 No.	Phyllostachys nigra	80-100cm	5L	Several Shoots: 7 brks: C	Counted

Total :35 No.

FERNS					
Number	Plant Name	Container	Specification		Density
16 No.	Dryopteris affinis 'Cristata Angustata'	5L	Full Pot: C		5/m <sup>2</sup>
13 No.	Dryopteris filix-mas	5L	Full Pot: C		5/m <sup>2</sup>

Total :29 No.

GRASSES					
Number	Plant Name	Height	Container	Specification	Density
23 No.	Carex buchananii		5L	Full Pot: C	5/m <sup>2</sup>
19 No.	Liriope muscari		5L	Full Pot: C	5/m <sup>2</sup>
11 No.	Miscanthus sinensis 'Gracillimus'		5L	Full Pot: C	5/m <sup>2</sup>
7 No.	Pennisetum alopecuroides 'Hameln'		5L	Full Pot: C	2/m <sup>2</sup>

Total :60 No.



**Stansted:**  
Unit 1, The Exchange,  
9 Station Road,  
Stansted, CM24 8BE

t +44 (0)1279 647044  
e office@lizlake.com  
www.lizlake.com

**Bristol:**  
1 Host Street,  
Bristol, BS1 5BU

t +44 (0)117 927 1786  
e office@lizlake.com  
www.lizlake.com

**Nottingham:**  
3 Newcastle Chambers  
Angel Row  
Nottingham  
NG1 6HL  
t +44 (0)115 784 3566  
e office@lizlake.com  
www.lizlake.com

**LIZ LAKE**  
**ASSOCIATES**  
**LANDSCAPE ARCHITECTS**

- Landscape Design
- Urban Design
- Residential
- Public Realm
- Masterplanning
- Landscape Planning
- Heritage Landscapes
- Gardens and Estates
- Restoration and Conversion
- Places of Worship
- Expert Witness
- Hospitality
- Education
- Retail / Office
- Community
- Ecology
- Arboriculture
- 3D / Graphic Design