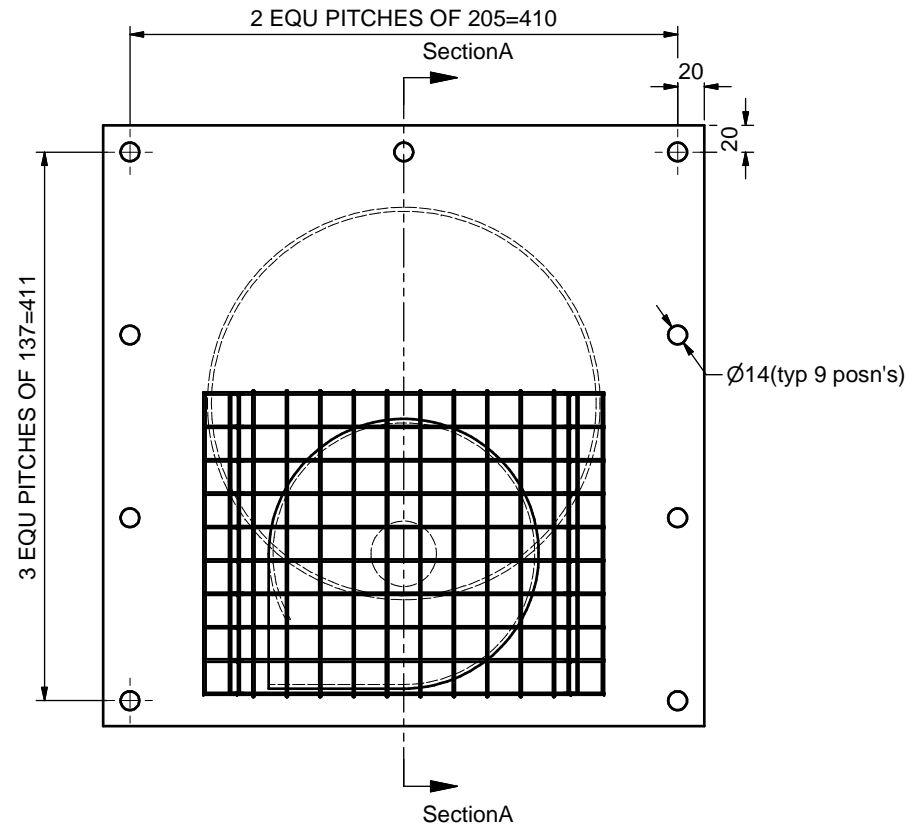
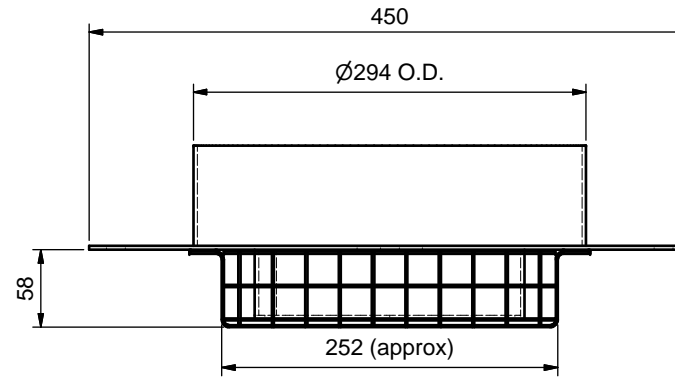


Section A-A
(Mesh omitted for clarity)



PROJECTION

1. THIS DRAWING SHALL BE READ IN CONJUNCTION WITH ALL RELEVANT GENERAL ARRANGEMENT & DETAIL DRAWINGS.
2. ALL COMPONENTS SHALL BE MANUFACTURED IN ACCORDANCE WITH THE PRODUCTION SPECIFICATION HRD-FM09/15.

| | | | |
|-----|-----|------------|-------------|
| A | WCJ | 12/10/2012 | FIRST ISSUE |
| REV | BY | DATE | DESCRIPTION |

REVISION HISTORY

| | |
|------------|-------|
| Date | Scale |
| 12/10/2012 | 1:4 |

| | | |
|----------|------------|-------------|
| Drawn By | Checked By | Approved By |
| WCJ | | |

Title
HYDRO-BRAKE® FLOW CONTROL
Advanced Drainage Systems, Hinsdale South
1.9375" Type SXH
fitted with SS mesh guard

DETAIL DRAWING



Shearwater House
Clevedon Hall Estate
Victoria Road, Clevedon,
North Somerset, BS21 7RD
Tel: 01275 878371
Fax: 01275 874979

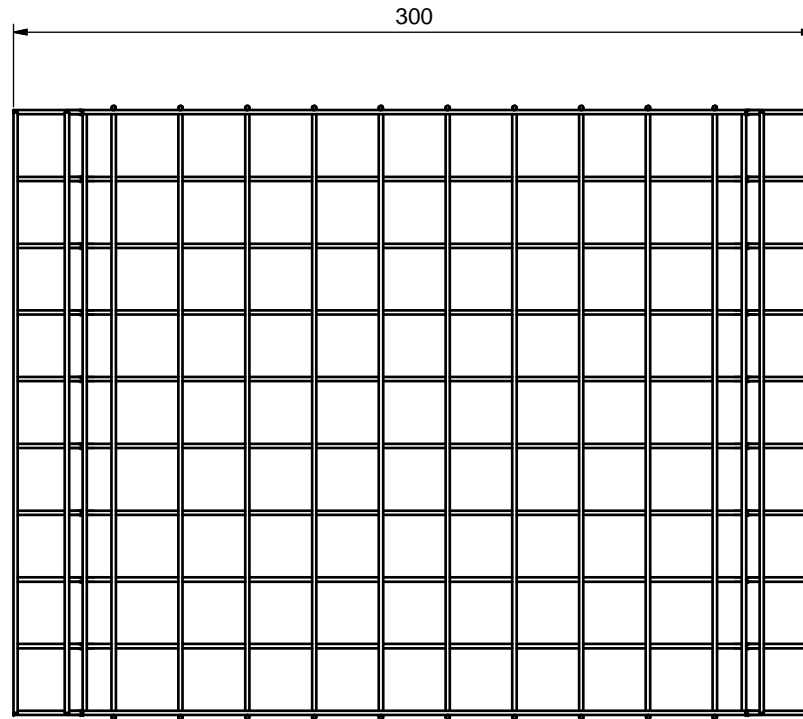
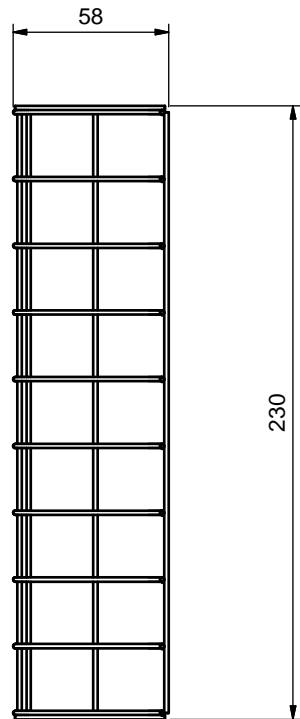
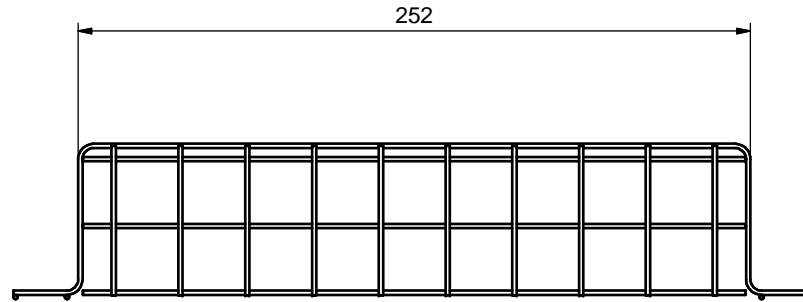
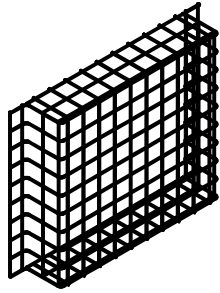
ANY WARRANTY GIVEN BY HYDRO INTERNATIONAL WILL APPLY ONLY TO THOSE ITEMS SUPPLIED BY IT. ACCORDINGLY HYDRO INTERNATIONAL CANNOT ACCEPT ANY RESPONSIBILITY FOR ANY STRUCTURE, PLANT, OR EQUIPMENT, (OR THE PERFORMANCE THERE OF) DESIGNED, BUILT, MANUFACTURED, OR SUPPLIED BY ANY THIRD PARTY. HYDRO INTERNATIONAL HAS A POLICY OF CONTINUOUS DEVELOPMENT AND RESERVE THE RIGHT TO AMEND THE SPECIFICATION. HYDRO INTERNATIONAL CANNOT ACCEPT LIABILITY FOR PERFORMANCE OF ITS EQUIPMENT, (OR ANY PART THEREOF), IF THE EQUIPMENT IS SUBJECT TO CONDITIONS OUTSIDE ANY DESIGN SPECIFICATION. HYDRO INTERNATIONAL OWNS THE COPYRIGHT OF THIS DRAWING, WHICH IS SUPPLIED IN CONFIDENCE. IT MUST NOT BE USED FOR ANY PURPOSE OTHER THAN THAT FOR WHICH IT IS SUPPLIED AND MUST NOT BE REPRODUCED, IN WHOLE OR IN PART, WITHOUT PRIOR PERMISSION IN WRITING FROM HYDRO INTERNATIONAL.
©2011 HYDRO INTERNATIONAL

DO NOT SCALE DRAWING

UNLESS OTHERWISE SPECIFIED, DIMENSIONS ARE IN MILLIMETRES.
TOLERANCING INFORMATION IS FOUND IN PRODUCTION SPECIFICATION HRD-FM09/15

| | | | |
|---------------------|--------------------|-------------|-------|
| Approximate Weight: | N/A | | |
| Finish: | Next Assembly: | | |
| Treatment: | PROJECT (Wipe No.) | 12-2589-001 | |
| Sheet Size: A3 | Sheet: 1 OF 2 | Drawing No. | D1001 |
| | | Rev | A |

enquiries@hydro-international.co.uk



1" STAINLESS STEEL MESH (16swg) GRADE 304



| | | | |
|----------|------------|------------|-------------|
| Date | 12/10/2012 | Scale | 1:4 |
| Drawn By | WCJ | Checked By | Approved By |

Title
HYDRO-BRAKE® FLOW CONTROL
 Advanced Drainage Systems, Hinsdale South
 1.9375" Type SXH
 fitted with SS mesh guard

DETAIL DRAWING



Shearwater House
 Clevedon Hall Estate
 Victoria Road, Clevedon,
 North Somerset, BS21 7RD
 Tel: 01275 878371
 Fax: 01275 874979

ANY WARRANTY GIVEN BY HYDRO INTERNATIONAL WILL APPLY ONLY TO THOSE ITEMS SUPPLIED BY IT. ACCORDINGLY HYDRO INTERNATIONAL CANNOT ACCEPT ANY RESPONSIBILITY FOR ANY STRUCTURE, PLANT, OR EQUIPMENT, (OR THE PERFORMANCE THERE OF) DESIGNED, BUILT, MANUFACTURED, OR SUPPLIED BY ANY THIRD PARTY. HYDRO INTERNATIONAL HAVE A POLICY OF CONTINUOUS DEVELOPMENT AND RESERVE THE RIGHT TO AMEND THE SPECIFICATION. HYDRO INTERNATIONAL CANNOT ACCEPT LIABILITY FOR PERFORMANCE OF ITS EQUIPMENT, (OR ANY PART THEREOF), IF THE EQUIPMENT IS SUBJECT TO CONDITIONS OUTSIDE ANY DESIGN SPECIFICATION. HYDRO INTERNATIONAL OWNS THE COPYRIGHT OF THIS DRAWING, WHICH IS SUPPLIED IN CONFIDENCE. IT MUST NOT BE USED FOR ANY PURPOSE OTHER THAN THAT FOR WHICH IT IS SUPPLIED AND MUST NOT BE REPRODUCED, IN WHOLE OR IN PART, WITHOUT PRIOR PERMISSION IN WRITING FROM HYDRO INTERNATIONAL.
 ©2011 HYDRO INTERNATIONAL

DO NOT SCALE DRAWING
 UNLESS OTHERWISE SPECIFIED, DIMENSIONS ARE IN MILLIMETRES.
 TOLERANCING INFORMATION IS FOUND IN PRODUCTION SPECIFICATION HRD-FM09/15

| | | | |
|---------------------|--------------------|-------------|-------------|
| Approximate Weight: | N/A | | |
| Finish: | Next Assembly: | | |
| Treatment: | PROJECT (Wipe No.) | 12-2589-001 | |
| Sheet Size: A3 | Sheet: 2 OF 2 | Drawing No. | D1001 Rev A |

enquiries@hydro-international.co.uk