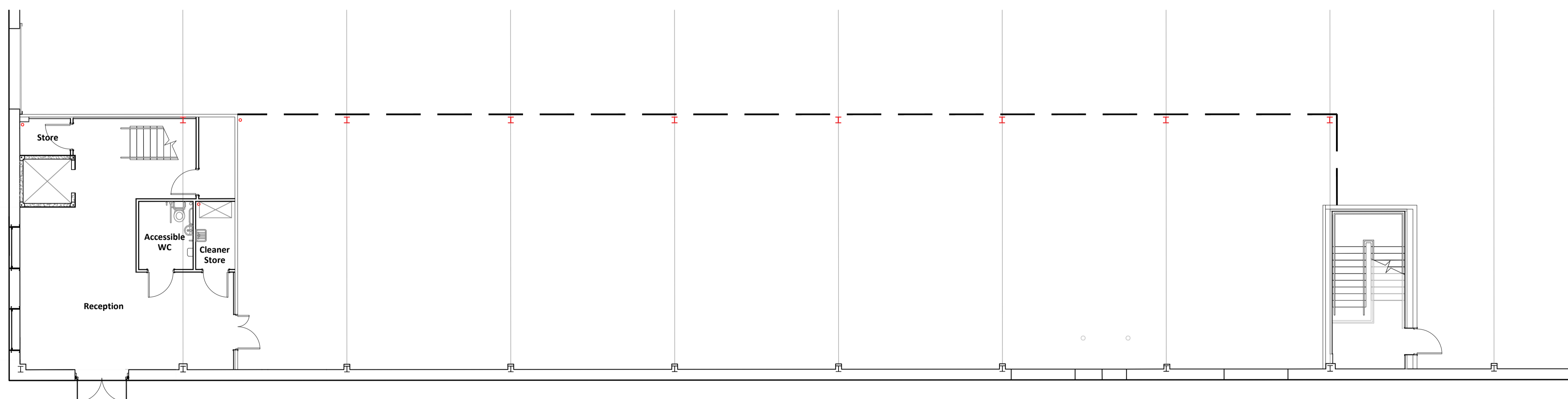


First Floor 1:100 @ A1



Ground Floor 1:100 @ A1

D	Ground Floor layout amended to suit JH comments 10.07.18	KF	GH	11.07.18
C	Entrance door & window arrangement amended.	KF	GH	10.07.18
B	Entrance door & window arrangement amended.	KF	GH	28.06.18
A	Initial Issue.	KF	GH	27.06.18
rev	amendments	by	ckd	date

**Banbury 200 Unit,
 Southam Road, Banbury**
 Proposed Ground and First Floor Offices



Newark Beacon Innovation Centre, Caferston Way, Newark, Nottinghamshire NG24 2TN
 t +44 (0)1636 653027 f +44 (0)1636 653010 e info@umcarchitects.com

Drawing Status:	Planning
Drawn / Checked:	DG / GH
Date:	26.06.18
Scale:	1:100 @ A1
Drawing no:	Revision:
16083 P009	D

