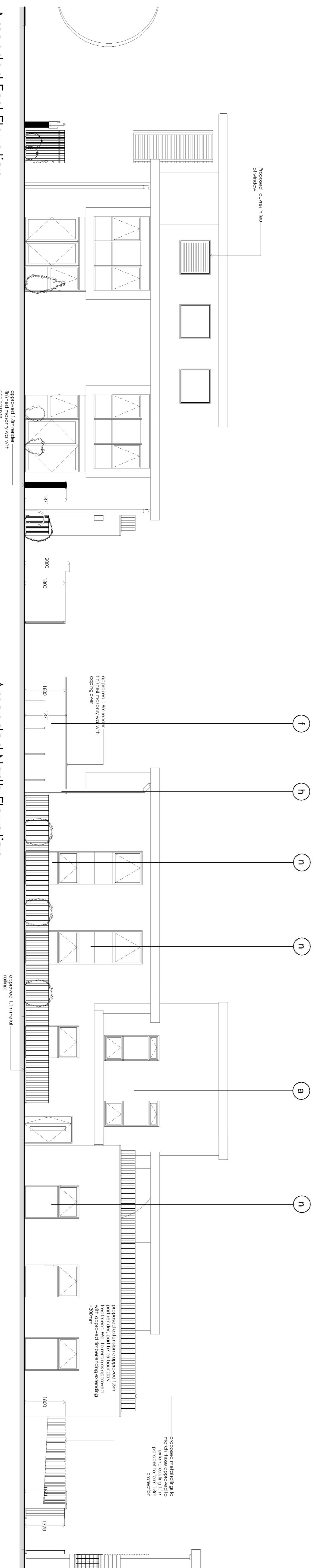


Amended South Elevation

Amended West Elevation



Amended East Elevation

Amended North Elevation

- Material Legend**
- a Buff facing brick
  - b Orange/red facing brick
  - c Timber slatted solar shade & laminated timber frame
  - d Aluminium framed windows and doorsets
  - e Flat roof
  - f Rendered masonry wall with concrete coping
  - g Standing seam zinc appearance roofing
  - h Aluminium rainwater goods
  - i Colour fixed ventilator panel to composite aluminium windows
  - j Steel faced security door
  - k Louvered timber doors
  - l PPC circular columns
  - m Coloured building panel
  - n Pre-cast concrete column

The drawings and the information provided here are the property of BHP Design LLP and shall not be reproduced or modified without the written permission. No liability will be accepted for information made by other persons, and we make no liability for any errors or omissions. BHP Design LLP shall not be liable for any loss or damage, including consequential loss or damage, arising from the use of the drawings, whether or not such loss or damage is foreseeable. BHP Design LLP shall not be liable for any loss or damage, including consequential loss or damage, arising from the use of the drawings, whether or not such loss or damage is foreseeable. BHP Design LLP shall not be liable for any loss or damage, including consequential loss or damage, arising from the use of the drawings, whether or not such loss or damage is foreseeable.

Revisions:	Amendment	Date:	Name:

# PLANNING

**BUSY BEES**  
TOTALLY DEVOTED TO CHILDCARE

**bhp design**  
St. Paul's Place, 40 St. Paul's Square, Birmingham,  
B3 1FQ, United Kingdom  
t. +44(0)121 314 5618 f. +44(0)121 233 2716

**CLIENT:** BUSY BEES NURSERIES  
**PROJECT:** KINGSMERE, BICESTER  
**TITLE:** PROPOSED ELEVATIONS

Scale: 1:100 @ A1 1:200 @ A3	Date: 19.10.17
Drawn: JC	Checked: -
By: -	By: -
Dwg No: 17-152-P-11	Revision: -