

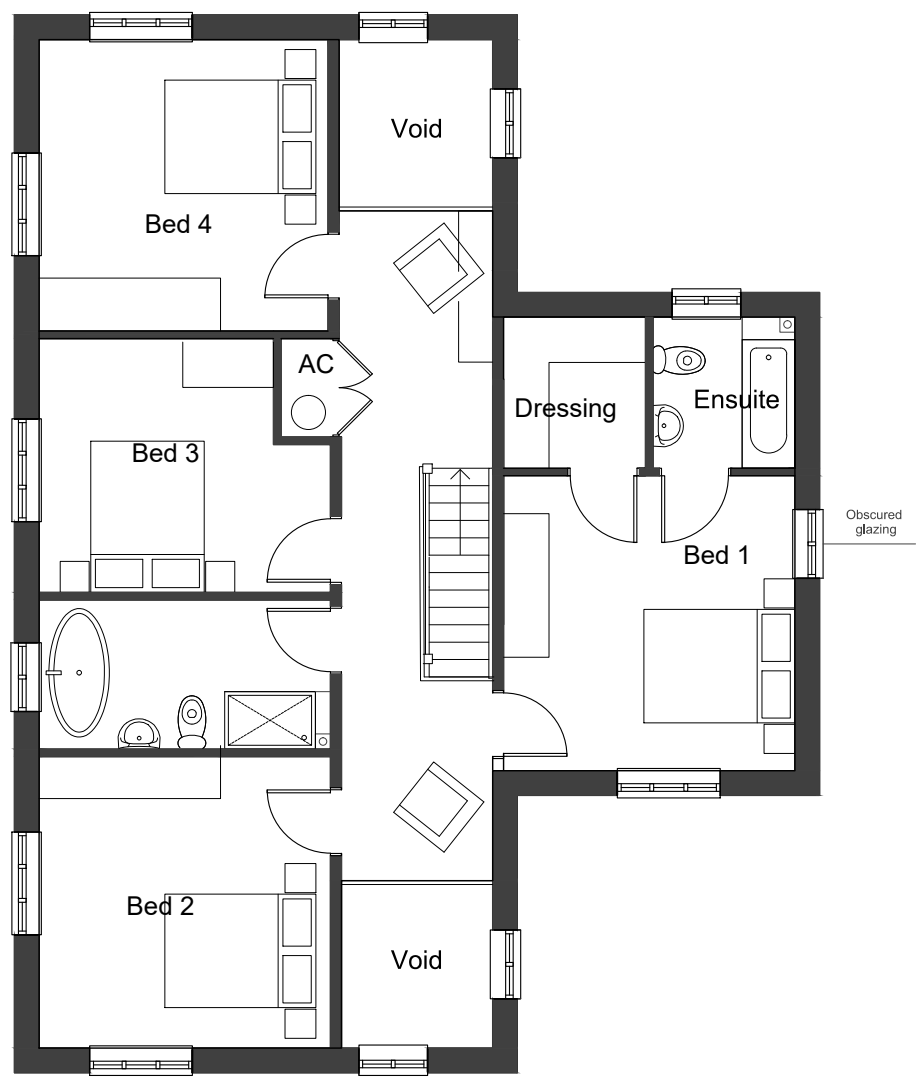
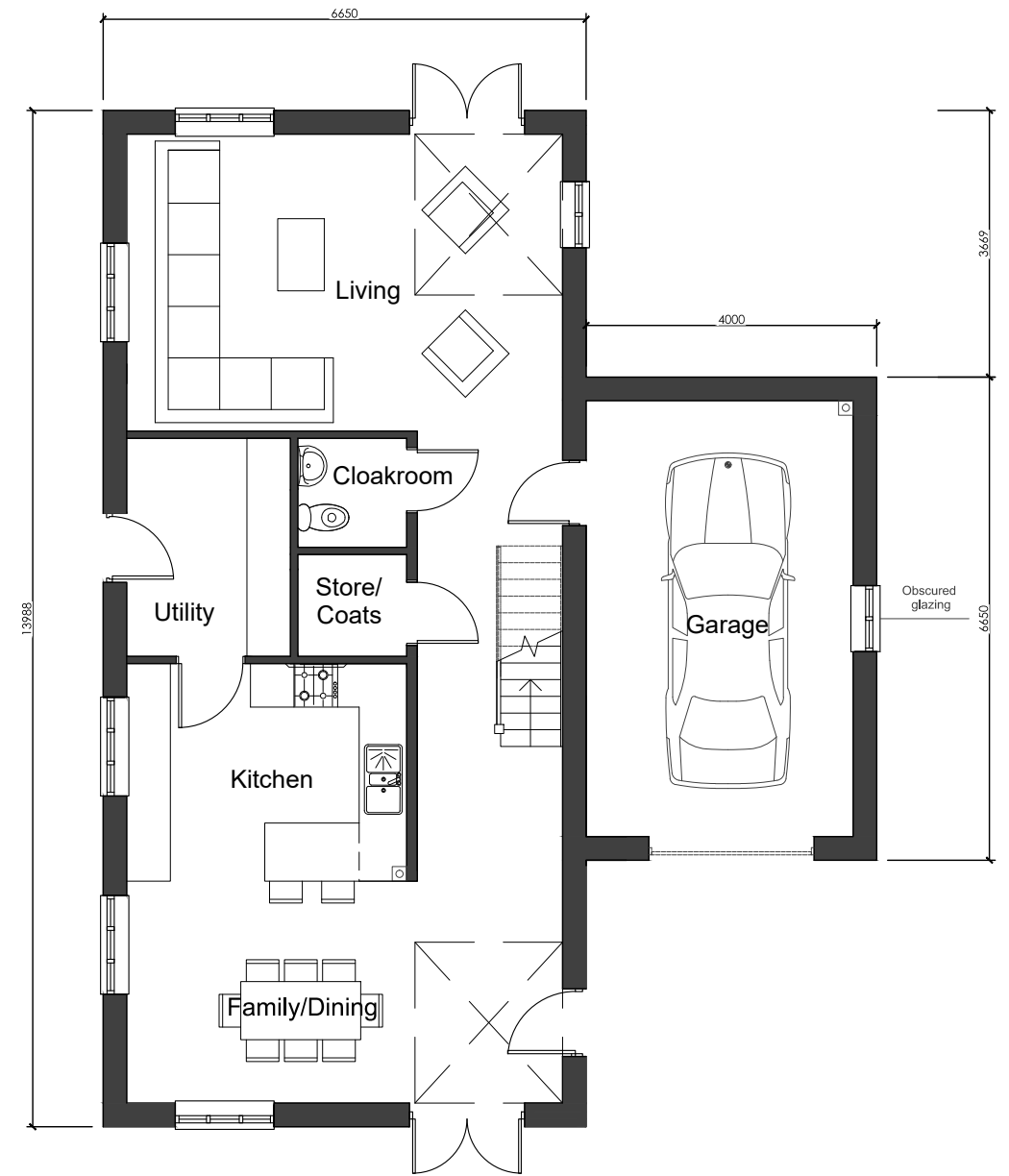
Notes:
The contractor must verify all dimensions on site before commencing any work on shop drawings, do not scale from this drawing
McBains Ltd copyright

BIM Transmittal Disclaimer
McBains Ltd makes no express or implied warranties with respect to the character, function, or capabilities of the data (inclusive of 3rd party data incorporated within), or the suitability of the data for any particular purpose beyond those originally intended by McBains Ltd. Please refer to our standard terms and conditions for further details.

NOTE:
ALL BATHROOMS, GARAGE, LANDINGS & ENSUITE WINDOWS TO HAVE OBSCURED GLASS.
REFER TO EXTERNAL MATERIALS PLAN FOR SPECIFIC MATERIALS AND COLORS.

**PLANNING APPROVED FOOTPRINT
DIMENSION AND AREA INDICATED
FOR INFORMATION ONLY**

Net Floor Area: 175.01 sq.m. / 1883.8 sq.ft.



REV	AMENDMENT	DATE	CHKD
A	Amended to suit layout	21.04.16	EC

DRAWING STATUS: **PLANNING**



CLIENT: **Bellway**

PROJECT:
PARCELS KM5 & KM22
KINGSMERE
OXFORDSHIRE

DRAWING TITLE:
HOUSETYPE PLANS
KM10
Plots 50 and 51

ARCHITECTURE

SCALE	DRAWN BY	CHECKED	DATE
1:100 @ A3	TS	EC	Jan 2016

DRAWING NUMBER	REVISION
LHG 57699 - 158	A

