

Notes:
The contractor must verify all dimensions on site before commencing any work on shop drawings, do not scale from this drawing
McBains Ltd copyright

BIM Transmittal Disclaimer
McBains Ltd makes no express or implied warranties with respect to the character, function, or capabilities of the data (inclusive of 3rd party data incorporated within), or the suitability of the data for any particular purpose beyond those originally intended by McBains Ltd. Please refer to our standard terms and conditions for further details.

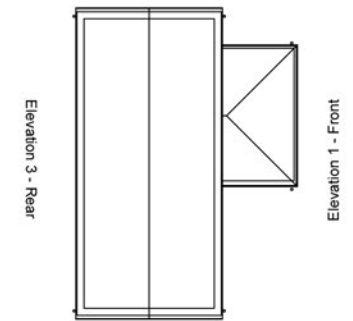
NOTE:
ALL BATHROOMS, GARAGE, LANDINGS & ENSUITE WINDOWS TO HAVE OBSCURED GLASS
REFER TO EXTERNAL MATERIALS PLAN FOR SPECIFIC MATERIALS AND COLORS.



ELEVATION 1 - FRONT

ELEVATION 2 - SIDE

Elevation 2 - Side



Elevation 4 - Side

Net Floor Area: 158.88 sq.m. / 1710 sq.ft.

Stone: Beckstone Golden Buff - Tumbled
Tiles: Rivendale Blue/Black Fibrecement Slate
150mm high Stone Cills and Lintels



ELEVATION 3 - REAR

ELEVATION 4 - SIDE

B	Amended to suit plan	04.10.17	EC
A	Amended to suit layout	21.04.16	EC
REV	AMENDMENT	DATE	CHKD
PLANNING			

McBains
McBains Ltd
5th Fl, 26 Finsbury Square London EC2A 1DS
+44 (0)20 7786 7900 mcbains.co.uk

CLIENT
Bellway

PROJECT
PARCELS KM5 & KM22
KINGSMERE
OXFORDSHIRE

DRAWING TITLE
HOUSETYPE PLANS
KM10
Plots 50 and 51

ARCHITECTURE

SCALE 1:100 @ A3 DRAWN BY TS/EC CHECKED EC/PO'R DATE Jan 2016

DRAWING NUMBER LHG 57699 - 159 REVISION B

