

Legend

PUBLIC_RIGHTS_OF_WAY

- Public Footpath
- Public Bridleway
- Restricted Byway
- Byway Open to all Traffic
- SWIFT_RECORDS
- PROTECTED_AND_NOTABLE_SPECIES
- PROTECTED_SPECIES_BUFFER
- ROAD_VERGE_NATURE_RESERVES
- EIL_TEXT
- ASSETS OF COMMUNITY VALUE

- Area TPOs
- Group TPOs
- TPO Trees
- Woodland TPOs

LISTED BUILDINGS

- GRADE
 - I
 - II*
 - II
 - DL
- CURTILAGE LISTING
- LOCALLY LISTED BUILDINGS
- ARTICLE 4
- ARCHAEOLOGICAL CONSTRAINT PRIORITY AREAS
- SCHEDULED ANCIENT MONUMENT
- EIL_REGIONS
- PONDS_MAPPING (INCLUDING GREAT CRESTED NEWTS)
- NERC ACT S41 Habitats (Previously UKBAP PRIORITY HABITATS)
- REGISTERED_COMMON_LAND
- SPECIAL_SITES_OF_SCIENTIFIC_INTEREST
- SPECIAL_AREAS_OF_CONSERVATION
- ANCIENT_WOODLAND
- CONSERVATION_AREAS
- DISTRICT_WILDLIFE_SITES
- LOCAL_WILDLIFE_SITES
- PROPOSED_NEW_LWS_AND_EXTENSIONS_LWS
- LOCAL_NATURE_RESERVE
- PARKS_AND_GARDENS
- AREAS_OF_OUTSTANDING_NATURAL_BEAUTY
- RAILWAY_TUNNEL
- HIGH_PRESSURE_GAS_PIPELINES
- LGS_POINTS
- LGS_POLYGONS

POTENTIALLY CONTAMINATED LAND

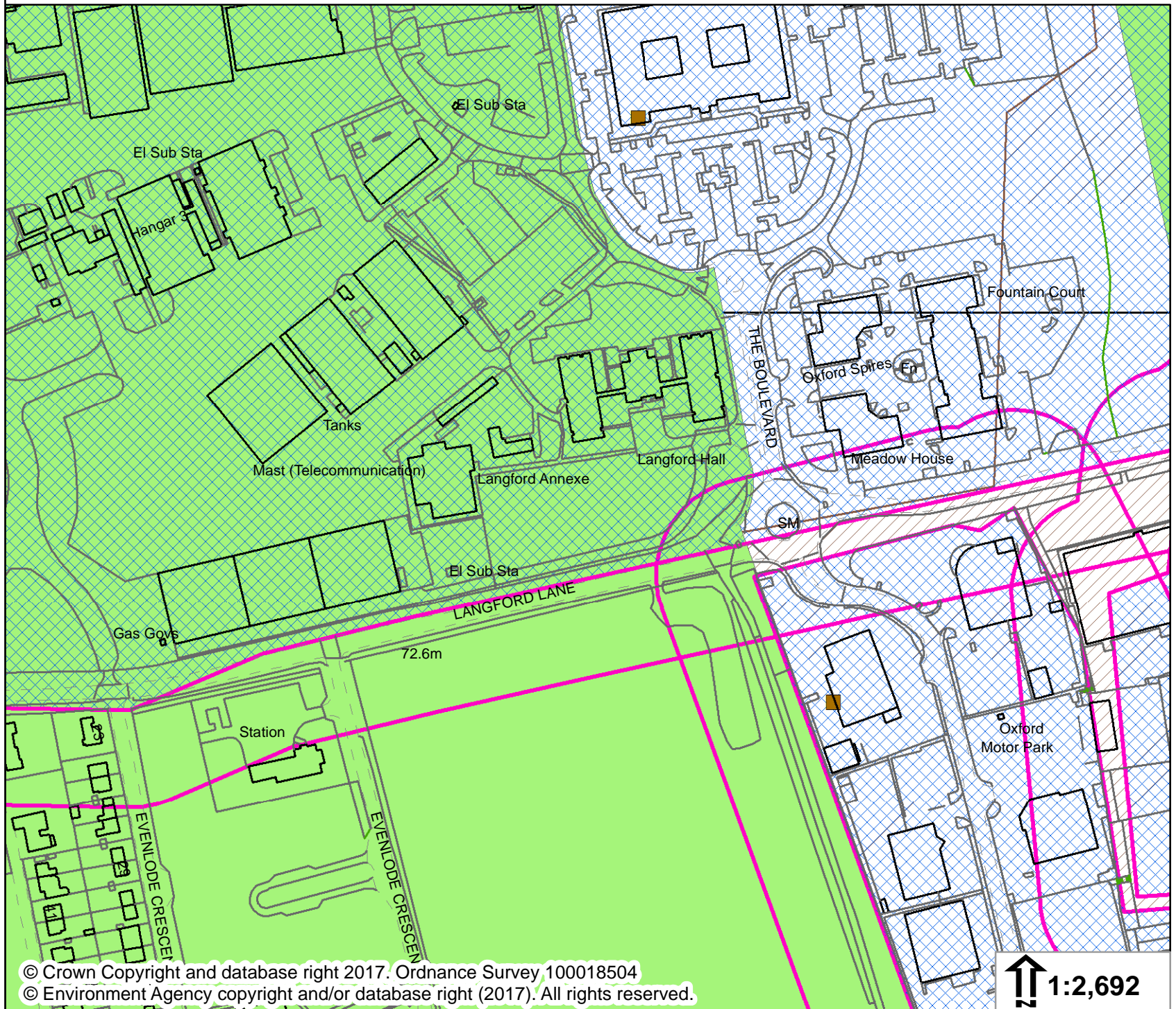
- Buffer Distance
 - 0
 - 50
- EA LANDFILL_SITES
 - Buffer Distance
 - 0
 - 250
 - HISTORIC LANDFILL_SITES_10K
 - BANK_TOP_WIDTH_PLANNING
 - CRT_HOUSEHOLD_AND_MINOR_SCALE_DEVELOPMENTS
 - CRT_EIA_AND_MAJOR_SCALE_DEVELOPMENTS
 - Flood Zone 3
 - Flood Zone 2
 - NAT_FSA
 - NAT_DEFENCES
 - NAT_AREAS_BENEFIT
 - NAT_CENTRELINES

HS2 SAFEGUARDING ZONES

- Type
 - Safeguarding Limits
 - Sub-Surface
 - Surface
- NATURALLY_ELEVATED_ARSENIC
- GREEN BELT
- CONSERVATION_TARGET_AREAS
- MINERAL_CONSULTATION_REGION

Neighbourhood Development Plans

- Details
 - Neighbourhood Plan Area
 - Important Amenity Green Spaces
 - Local Green Spaces
- NATIONAL_GRID_REFERENCE
- WARDS
- PARISHES



© Crown Copyright and database right 2017. Ordnance Survey 100018504
© Environment Agency copyright and/or database right (2017). All rights reserved.

↑ 1:2,692