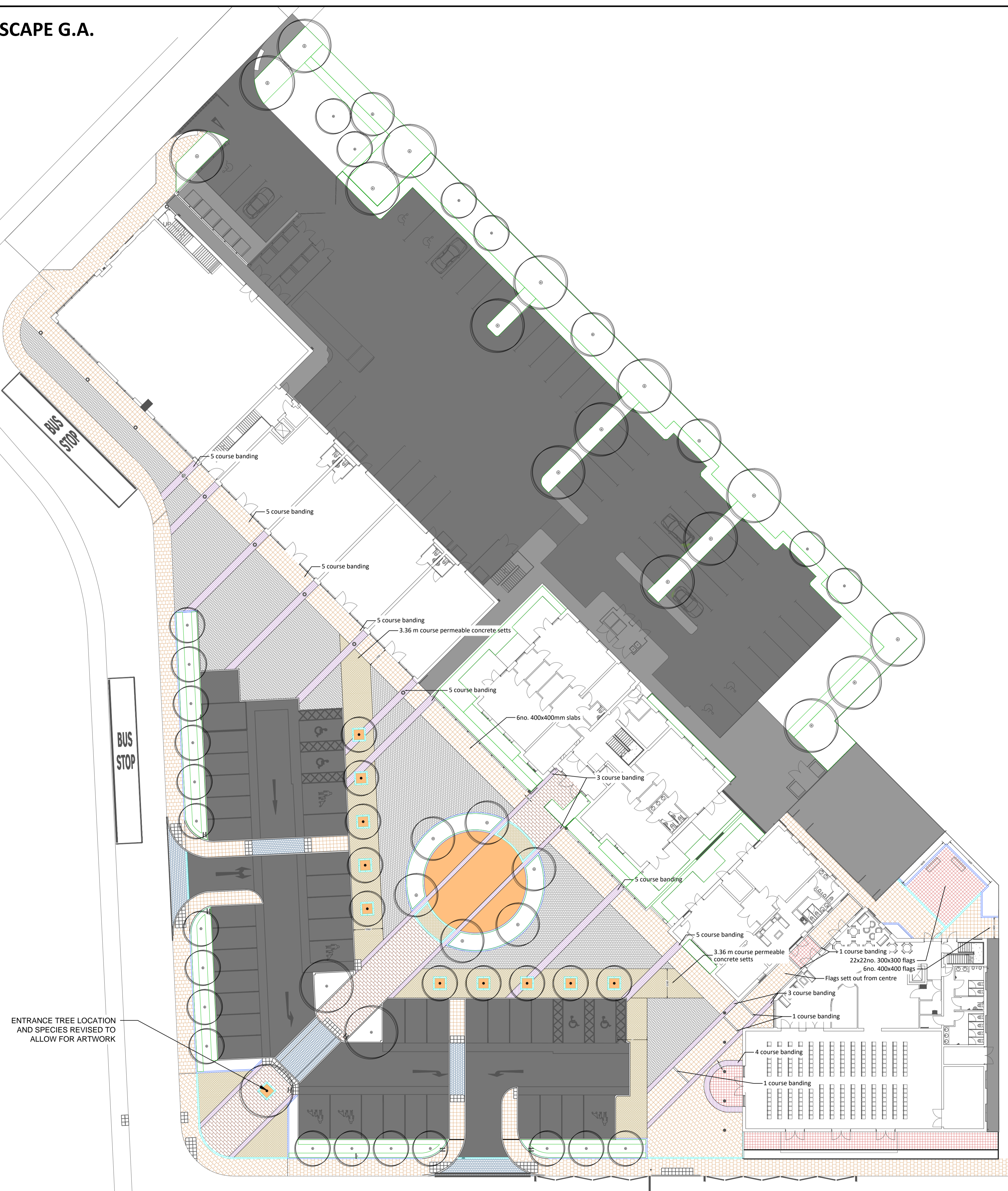


HARDSCAPE G.A.

1:250

Z:\Kingmere 2226\DWG\Local Centre\2226_LC_004 - Hard Surfaces Strategy.dwg
Drawn by D & Checked by PG
© David Jarvis Associates 2015



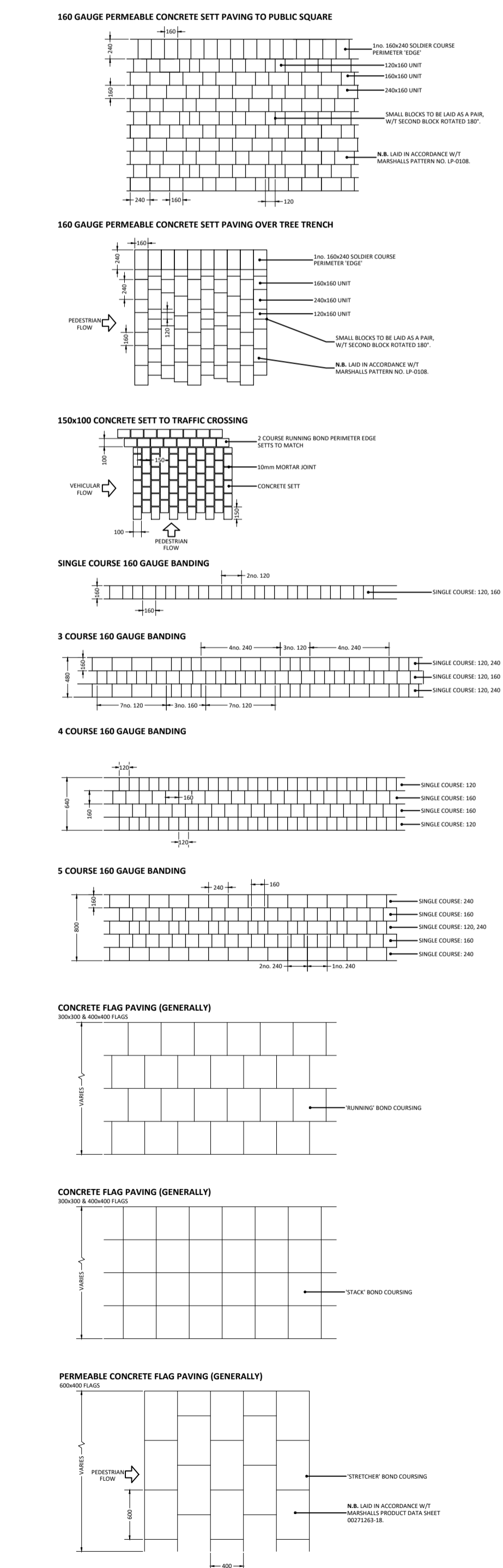
KEY

PROPOSED SURFACE TREATMENTS
(MATCH PATTERN DIRECTION DENOTES GENERAL LAYING DIRECTION)

	BITMAC: VEHICULAR
	BITMAC: PEDESTRIAN
	PAVEMENT BAND: MISTRAL, SILVER GREY MARSHALLS MISTRAL TEXTURED GRANITE AGGREGATE SETT PAVING 100 GAUGE, 100, 120, 160, 240
	PERMEABLE SETT: MISTRAL PRIORA, CHARCOAL MARSHALLS MISTRAL PRIORA PERMEABLE GRANITE AGGREGATE SETT PAVING 100 GAUGE, 100, 120, 160, 240
	PERMEABLE SETT: MISTRAL PRIORA, HARVEST BUFF MARSHALLS MISTRAL PRIORA PERMEABLE GRANITE AGGREGATE SETT PAVING 100 GAUGE, 100, 120, 160, 240
	CONCRETE SETT: CONSERVATION, SILVER GREY MARSHALLS TRAFICA CONSERVATION SETT PAVING 150x150x100
	CONCRETE FLAG: PAVING, HARVEST BUFF MARSHALLS TRAFICA CONSERVATION FLAGS 400x400x65
	CONCRETE FLAG: PAVING, SILVER GREY MARSHALLS TRAFICA CONSERVATION FLAGS 400x400x65
	CONCRETE FLAG: PAVING, FRENCH GREY MARSHALLS TRAFICA CHARNWOOD FLAGS 300x300x60
	RESIN BOUND AGGREGATE: ADESSETT DORSET GOLD ADDEGAP RESIN BOUND AGGREGATE 6mm @ x 38mm DEEP
	CONCRETE FLAG: TACTILE PAVING, BUFF (NOT SHOWN) MARSHALLS TACTILE FLAGS 400x400x65
	CONCRETE KERB: CONSERVATION, HARVEST BUFF MARSHALLS CONSERVATION KERB 145x250
	CONCRETE CHANNEL KERB: STANDARD, NATURAL MARSHALLS STANDARD CONCRETE CHANNELS 150x150 LAID FLUSH

BOND PATTERNS

1:50



Notes

Issue: Drawn by David Jarvis Associates Limited (CROWN COPYRIGHT). ALL RIGHTS RESERVED 2011 LICENCE NUMBER 01000511. This drawing is for information purposes only - Do not use this drawing for construction.

Drawing Information: This is a composite drawing based on: Hunters Architects drawing MR001 model planning options 3 - 30hrs - A604210 - Ground floor G.A. dwg, 7/04/2016 @ 11:29hrs, WSP planning info, ref: 30/10/2015 @ 12:35hrs & WSP Local Centre Car park drawings, 7/04/2016 @ 08:38hrs.

Scaling: Do not scale this drawing. Use given dimensions only.

Services: refer to Engineer's drawings.

Construction Information: all detailed design (including, but not necessarily limited to), bond patterns, kerbing, edging, tactile crossing demarcation, construction build-up, levels, drainage etc., to be provided by an appropriately qualified structural/highways engineer to be appointed by the client for presentation to (and subsequent discharge from) the relevant supervising authority and/or body.

Design Responsibilities: For information regarding the Service yard: refer to Architects details. For information regarding the Local Centre Car Park: refer to Engineer's details.

Planting: All plants and planting procedure to conform to the David Jarvis Associates Limited Landscape Specification that will accompany the Construction Issue drawings. No species or plant location is to be varied without prior consent of the Landscape Architect.

Foundations: Developers / Contractors to ensure that all foundations (buildings and external walling) are designed and constructed so as to take into account, at the time of maturity, any existing or proposed trees, hedgerows or other vegetation on the application site or existing vegetation on land adjoining the site at the time of construction and any trees felled or hedgerows removed on or adjacent to the site during the previous 15 years. For this purpose the developer / contractors will submit all relevant details to the authority dealing with the Building Regulations Certificate.

Rev	Date	Description
A	20/05/2015	Update and species of entrance tree revised to allow for proposed artwork.
B	06/12/2015	Update material and car pavements from ground.
C	09/05/2016	Update in accordance with Architects & Engineers revised A. Service yard - car park frontage. Add 5 course paving band by road frontage to B & C. Update car park frontage and architect revised G.A. Plan.
D	10/12/2015	Update in accordance with Architects revised G.A.
E	06/12/2015	Over: Update paving pattern to B & C. Update material and car pavements from ground. Update material and car pavements from ground. Update material and car pavements from ground. Update material and car pavements from ground.
F	16/12/2015	Over: Car parking material to granite pavers.
G	16/12/2015	Over: Update to granite pavers. Add permeable brick paving. Reason: Engineer's instruction, ref: 13/10/2015 @ 10:45hrs.
H	10/12/2015	Over: Update to granite pavers. Add permeable brick paving. Reason: Engineer's instruction, ref: 13/10/2015 @ 10:45hrs.
I	06/12/2015	Over: Update to granite pavers. Add permeable brick paving. Reason: Engineer's instruction, ref: 13/10/2015 @ 10:45hrs.
J	06/12/2015	Over: Update to granite pavers. Add permeable brick paving. Reason: Engineer's instruction, ref: 13/10/2015 @ 10:45hrs.
K	06/12/2015	Over: Update to granite pavers. Add permeable brick paving. Reason: Engineer's instruction, ref: 13/10/2015 @ 10:45hrs.
L	06/12/2015	Over: Update to granite pavers. Add permeable brick paving. Reason: Engineer's instruction, ref: 13/10/2015 @ 10:45hrs.
M	06/12/2015	Over: Update to granite pavers. Add permeable brick paving. Reason: Engineer's instruction, ref: 13/10/2015 @ 10:45hrs.
N	06/12/2015	Over: Update to granite pavers. Add permeable brick paving. Reason: Engineer's instruction, ref: 13/10/2015 @ 10:45hrs.

Drawing Status

PLANNING

DAVID JARVIS ASSOCIATES

DAVID JARVIS ASSOCIATES LIMITED
1 Tennyson Street Swindon Wiltshire SN1 5DT
Tel: 01793 612173 Fax: 01793 613625
Email: mail@davidjarvis.biz

Client
COUNTRYSIDE PROPERTIES (BICESTER) LTD.

Project
KINGSMERE, PHASE 1 LOCAL CENTRE

Drawing Title
HARD SURFACES STRATEGY

Scale 1:250	Sheet Size A1	Date SEPT 2015
Drawing No. 2226/LC/004	Revision N	

