

GENERAL NOTES - REFER ALSO TO THE MEASURED WORKS SCHEDULE.

A) Setting out

1. All planting shall be set out exactly as shown on the drawings and measured from existing fixed points. Curved beds shall be set out using radii marked on the drawings and/or by using a wheel and a chain. A minimum of 500mm corners, 1000mm at edges and beds less than 1m wide. Praying this tolerance is essential to prevent floors of material becoming rejected by the specification for biodegradable sheet mulch on plan.

2. Following planting supply and spread evenly (minimum 15mm) of a suitable substrate to a depth of 50mm. (15mm if no sheet mulch specified). This substrate should be no higher than 15mm below pavement or grass levels to avoid any surface water drainage issues. N.B. no substitution of much type will be acceptable. It is essential to have a large, large perforated, brown wood chip to reduce weed growth, reduce wind flow and prevent rain break down.

B) Ground preparation

1. Preparing herbicide application: Apply by suitable spraying operation, an approved tanked herbicide to the manufacturer's instructions and to 1997 Control of Pesticides Regulations and 2003 Control of Pesticides Regulations. Do not spray any weeds present. If none are shown, but there may be a delay before planting, or the area is to be seeded, carry out one month following cultivation to allow dormant seeds to germinate. All spraying shall be carried out by a trained and qualified contractor, using protective clothing, in suitable weather (no wind) and any damage caused by spray drift, from incorrect usage or leakage, shall be specified at the contractor's own cost. Repeat as necessary to ensure complete kill and use of all dead material from site.

2. Carry out the following works to the existing topsoil to ensure it conforms to BS 5837:2012, being free from rocks larger than 50mm diameter, concrete, all roots, wire mesh and any other debris. For pre-planting herbicide as above. Fertilise with 100g per metre square of Hortobac CIP (15-12) 150g release fertilizer, in accordance with the manufacturer's instructions. For beds less than 5 metres in width, fork mix thoroughly or machine rotavator soil to a depth of 300mm, ensuring that the subgrade and topsoil are completely broken up and mixed. Where the area is greater than 5 metres in width, break up the subgrade and topsoil using a tractor-mounted subsoiler or ripper at 500mm centres to a depth of 500mm except where there are services, or within 5 metres of tree stems or 1 metres of existing hedges. Do not use areas where roots greater than 10mm diameter are encountered.

3. Determine before submitting a tender, the extent of all planting to be retained, the extent of all planting to be removed and the extent of all planting to be replaced. All planting to be replaced is to be replaced to a level 50mm below adjacent grass or paved surfaces. All planting to be replaced is to be replaced to a level 50mm below adjacent grass or paved surfaces. All planting to be replaced is to be replaced to a level 50mm below adjacent grass or paved surfaces.

4. For sloping areas to be turfed adjacent to paved areas, topsoil levels shall be graded flush with the finished pavement level for a 30mm setback to allow surface water to drain from pavement to soil areas. Soil of grass areas should be treated to provide a proud of paved areas. Soil levels more than 10mm below pavement edges will cause most damage to sodding.

5. Imported topsoil (where specified and sanctioned by the employer) for making up ground, shall conform to BS 5837:2012, be free from rocks over 50mm diameter, concrete, rods, wire and nails, and have less than 2% clay. Such soil shall be cultivated as set out above. Remediation materials shall first be approved by the landscape architect and then be supplied to site. No imported soil shall be supplied to site without a written instruction.

C) Planting

1. All planting must be carried out in accordance to the specification and schedule of quantities accompanying these drawings. Refer to the specification for the preparation of existing topsoil and required depths for planting, turfing, and standard beds, and also for maintenance requirements.

2. No substitutions will be accepted without the prior agreement of the responsible landscape architect. The contractor shall replace at once at his own cost any stock size, species or variety of plant which has not been specified on the planting plan and schedule, unless prior agreement to a substitution by the landscape architect has been received. All plants shall be true to size specified in the schedule of plants and associated details. All plants shall have a dry content of 15% or more. All shrubs, (other than ground cover), shall be 400-600mm height and spread, or otherwise specified for the job size by the HVA National Plant Specification and be healthy, healthy, disease free stock, not showing signs of stress. There should be a minimum of 5 branches per shrub. This specification is the minimum standard required and any stock falling below this standard, in the sole opinion of the responsible landscape architect shall be filled and replaced at the contractor's expense.

3. All shrubs, herbaceous plants, vines and climbers shall be watered on planting with 20 litres per square metre. Trees shall be watered in with 25 litres per tree position. Water treatment during the contract period at weekly intervals with 30 litres of water.

4. Proposed large feathered or standard trees to be true to the species, variety and size as specified on the planting plan to include 15m chestnut size (600mm above ground and 1000mm below ground) and No. saplings to be supplied device positioned 25mm maximum from the top of the post.

5. Turf to be cultivated grade such as Rowan 'Medford', or other of similar quality and source, approved by the landscape architect. The contractor shall replace at once any turf rejected by the landscape architect at his own cost.

6. Self draining drainage channels or other devices with "T" drawn after the architect's name, shall be fitted to the wallface with heavy duty, plastic coated garden wire. The drainage channels shall be constructed to the wallface by means of 125mm long stainless steel eye-brow fittings. Drainage No. at 200mm from top of the wallface, and the wire shall be fitted to the wallface, and the wire shall be fitted to the wallface. Train drainage in the direction of the wallface plastic coated garden wire traps.

7. Taking varieties of timber, with "T" drawn after the architect's name (in specially prepared pits or general areas) shall be treated to wallface by means of mounting, using stainless steel brackets 1.8 x 1.8mm generally (but 1.5 x 1.5mm for corners or where space is restricted). Brackets for adapting any panels for locations where walls or fences are lower than 1.8m. The brackets shall be fixed to the wallface using non-rusting screws 125mm long (to be approved), incorporating 50mm wide wood spacing blocks to ensure that the panels are mounted sufficiently far from the wall face to allow banking of stems. Ensure that all timber is pressure impregnated with a non-arsenic preservative and then painted with a dark brown non-physically preservative wood stain such as Sikkens 'Classic' water or similar and approved. Ensure that the brackets are in contact with the ground. Trim the cladding ends to the level with plastic coated garden wire traps.

8. Climbers specified outside proposed shrub beds shall have specially prepared timber pits. Climber pits shall be 400mm x 400mm and 600mm deep (minimum size), and be backfilled with topsoil from site - unless otherwise specified. Ensure the base of the pit is thoroughly broken up and free draining before back filling with topsoil. Ensure no damage to foundations and ensure, and make good all structures and surfaces disturbed. Fertilise with 50g of Hortobac CIP (15-12) 150g release fertilizer. Water with 15 litres of water per square pit.

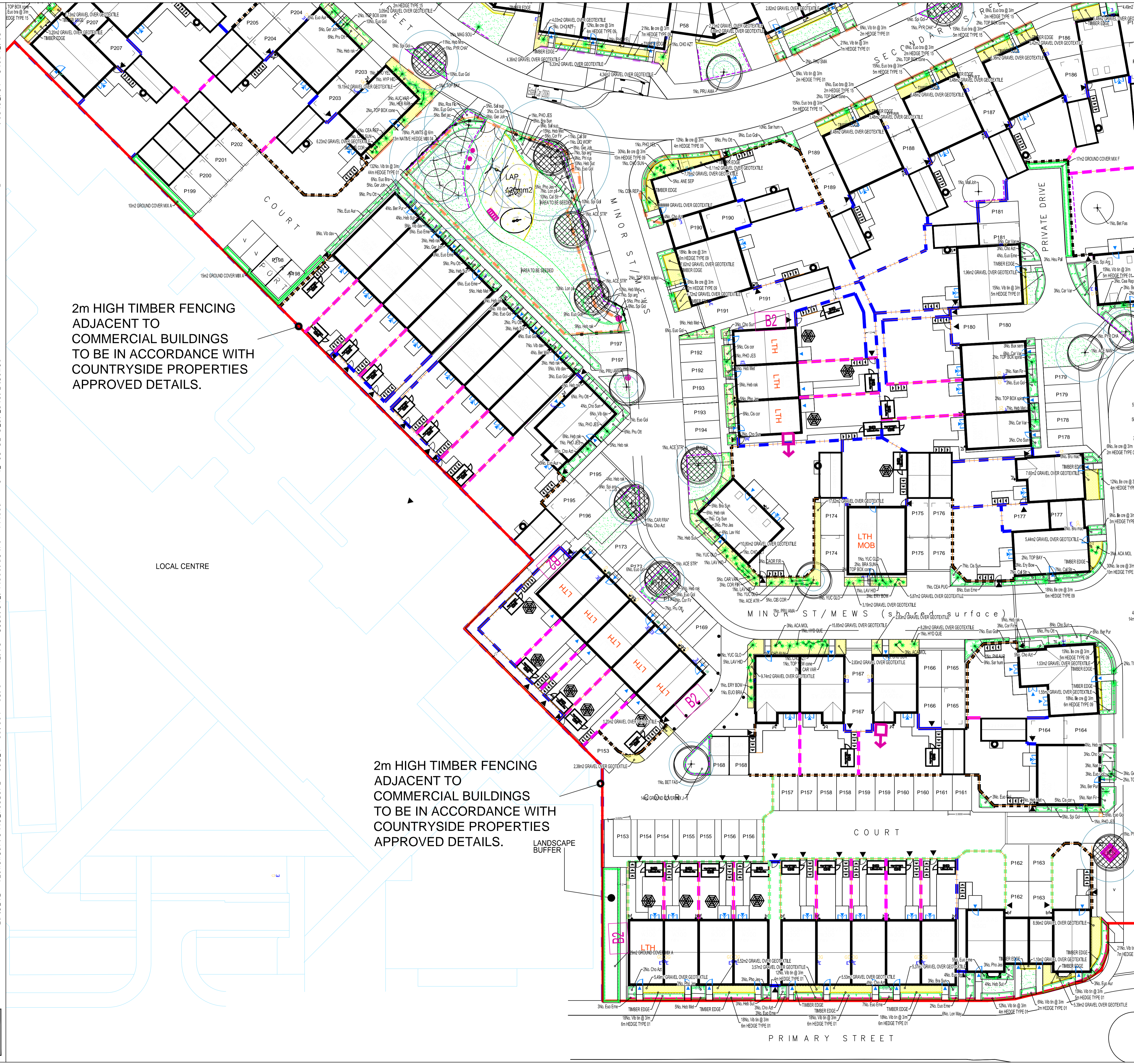
GENERAL NOTES

- ALL DIMENSIONS IN MILLIMETRES

- DO NOT SCALE OFF THIS DRAWING

- ALL DIMENSIONS TO BE CHECKED ON SITE

(C) JAMES BLAKE ASSOCIATES LTD 2017



KEY

- PROPOSED FEATHERED TREE, INCLUDING STAKE AND TIE. SEE SPECIFICATION NOTES A1, B2-3, B5, C1-4, D1-2 AND E1.
- PROPOSED STANDARD TREE, INCLUDING DOUBLE STAKE AND TIE. SEE SPECIFICATION NOTES A1, B2-3, B5, C1-4, D1-2 AND E1.
- PROPOSED EXTRA HEAVY STANDARD TREE, INCLUDING DOUBLE STAKE AND TIE. SEE SPECIFICATION NOTES A1, B2-3, B5, C1-4, D1-2 AND E1.
- PROPOSED EXTRA HEAVY STANDARD TREE IN PAVING, INCLUDING NETTING GRILL AND TREE GUARD AND UNDERGROUND GUTTING. TREE GRILL SUCH AS BROOKS SUNBURST SQUARE BX431-3 AND MATCH GARDEN. SEE SPECIFICATION NOTES A1, B2-3, B5, C1-4, D1-2 AND E1.
- PROPOSED CORNER OR BROAD LEAF EVERGREEN TREE, INCLUDING STAKE AND TIE. SEE SPECIFICATION NOTES A1, B2-3, B5, C1-4, D1-2 AND E1.
- SHRUB AND HERBACEOUS PLANTING, INCLUDING BIODEGRADABLE SHEET AND BARK MULCH ACCORDING TO SPECIFICATION. SEE SPECIFICATION NOTES A1-2, B1-3, C1-3, D1-2 AND E1.
- SHRUB AND HERBACEOUS PLANTING, INCLUDING SHEET AND GRAVEL MULCH ACCORDING TO SPECIFICATION. SEE SPECIFICATION NOTES A1-2, B1-3, C1-3, D1-2 AND E1.
- GROUND COVER PLANTING IN MIXES, INCLUDING BIODEGRADABLE SHEET AND BARK MULCH ACCORDING TO SPECIFICATION. SEE SPECIFICATION NOTES A1-2, B1-3, C1-3, D1-2 AND E1.
- HEDGE PLANTING, INCLUDING BIODEGRADABLE SHEET AND BARK MULCH ACCORDING TO SPECIFICATION. REFER TO HEDGE SCHEDULES ON PLAN AND THE SCHEDULE OF QUANTITIES. SEE SPECIFICATION NOTES A1-2, B1-3, B5, C1-3, D1-2 AND E1.
- WASHED, ROUNDED, BUFF COLOURED GRAVEL, 20mm GAUGE, 40mm DEPTH, FINISHED LEVEL 15mm BELOW ADJACENT SURFACES. LAND COVER 'COVERTURE' OVER LIGHTLY CONSOLIDATED SUBGRADE.
- CULTIVATED TURF UNLESS OTHERWISE STATED ON PLAN. SEE SPECIFICATION NOTES B4, C5 AND E1.
- CLIMBING SHRUB IN SHRUB BEDS, GRASS/ GRAVEL OR IN PITS IN PAVING. (SEE PLAN, TWINING VARIETIES (MARKED)) SEE NOTE C7. SELF CLIMBING VARIETIES (MARKED) SEE NOTE C8. SEE SPECIFICATION NOTES C1-3, C8, D1-2 AND E1.
- SPECIMEN SHRUBS IN SHRUB BEDS OR PITS PLANTED IN GRASS AREAS. SPECIMEN SHRUBS IN GRASS ARE MEASURED SEPARATELY IN SCHEDULE OF QUANTITIES. SEE SPECIFICATION NOTES A1, B1-3, C1-3, D1-2 AND E1.
- EXISTING TREE TO BE RETAINED. SEE GENERAL NOTE A1 AND E1. IF PREPARED, SEE ALSO JAMES BLAKE ASSOCIATES PLAN AND SCHEDULE FOR ANY SURVEY WORKS.
- EXISTING VEGETATION GROUP OR HEDGE TO BE RETAINED. SEE GENERAL NOTE A1 AND E1. IF PREPARED, SEE ALSO JAMES BLAKE ASSOCIATES PLAN AND SCHEDULE FOR ANY SURVEY WORKS.
- PLAY AREA EQUIPMENT AND SAFETY SURFACING BY MIRACLE PLAY LTD 01916 459 248
- TODDLER SWING SB 2032
- MULTIPLAY UNIT SB 1044
- HORSE SPRING ROCKER SB 4042
- SAFETY SURFACING TO BE RESIN BOUND RUBBER BARK OR SIMILAR (SUCH AS WETPOUR), DEPTH TO CRITICAL FALL HEIGHT BY PLAY EQUIPMENT MANUFACTURER.
- BENCH BY MIRACLE PLAY SB 5057
- BM WITH LED BY MIRACLE PLAY SB 5083
- 3 X ART SEATS COLOUR RED BY BJB INNOVATIONS LTD (01787) 248 015.
- BOWTOP RAINING BY MIRACLE PLAY
- TREE ROLL BARRIER SUCH AS RE-ROOT 2000 BY GREEN BLUE URBAN.
- APPROXIMATE TREE GROWTH AFTER 25YEARS.
- FREE ACCESS BAT BOX AVAILABLE FROM BOSTOCK. <http://www.bostock.com> TEL: 01440404075 OR SMILER AND APPROVED.
- STANDARD INTEGRAL BRD BOX 75MM CRESCENT HOLE AVAILABLE FROM BRD BROCK HOUSES <http://www.brdbrockhouses.co.uk> TEL: 01234388732 OR SMILER AND APPROVED.
- STANDARD INTEGRAL BRD BOX 34MM ROUND HOLE AVAILABLE FROM BRD BROCK HOUSES <http://www.brdbrockhouses.co.uk> TEL: 01234388732 OR SMILER AND APPROVED.
- STANDARD INTEGRAL BRD BOX 50MM ROUND HOLE AVAILABLE FROM BRD BROCK HOUSES <http://www.brdbrockhouses.co.uk> TEL: 01234388732 OR SMILER AND APPROVED.

NOTE: SEE SEPARATE EXTERNAL LAYOUT DRAWINGS (BY DEVELOPER) FOR SPECIFICATIONS AND ARRANGEMENT OF FENCING AND OTHER HARD WORKS

FOR PLANT LIST REFER TO SHEET JBA 17/081-06

LANDSCAPE PROGRAMMING
PLANTS MAY TAKE UP TO 4 WEEKS TO BE DELIVERED. EARLY LEAD-IN FOR SOFT LANDSCAPE IS ESSENTIAL. ALLOW SUFFICIENT TIME TO SOURCE.

NO.	DATE	BY	CHKD	APPD	REV.	DESCRIPTION
C	18/01/17	JBA			1	ISSUED TO CLIENT COMMENTS AND BRD AND BAT BOXES
D	18/01/17	JBA			2	ISSUED TO CLIENT COMMENTS AND BRD AND BAT BOXES
E	18/01/17	JBA			3	ISSUED TO CLIENT COMMENTS AND BRD AND BAT BOXES

CLIENT	NO.	DATE	BY	CHKD	APPD	REV.	DESCRIPTION
ROBIN HOODS	17/081	18/01/17	JBA			1	ISSUED TO CLIENT COMMENTS AND BRD AND BAT BOXES
WINDSOR WOODS	17/081	18/01/17	JBA			2	ISSUED TO CLIENT COMMENTS AND BRD AND BAT BOXES

DATE: 18/01/17
SCALE: 1:200
DATE: 18/01/17
DWG NO.: JBA 17/081-06
REV.: C

James Blake Associates

HEAD OFFICE
The Black Barn, Hill Road, Lavenham, Suffolk, CO10 9QX
Tel: (01787) 248216 Fax: (01787) 247264
james@jba.co.uk www.jamesblakeassociates.com

LANDSCAPE ARCHITECTURE o ARBORICULTURE o ECOLOGY

Jonathan May - 26/05/2015 - K:\Clients\Projects\17_081\Drawings\JBA\17_081_Landscape\Detailed\soft_plants_and_fds_rev_C.dwg