

**CHERWELL COUNCIL REFUSE COLLECTION REQUIREMENTS - TAKEN FROM CDC WEB SITE.**

**Your collections**

Every household has three wheeled bins: one blue, one brown and one green. You should also have a small electrical items bin. If you have any of these bins, you should have a small electrical items bin. If you have any of these bins, you should have a small electrical items bin.

**Missed bins**  
**PRINTED ON BOX RECYCLED PAPER**  
 If your bin is not emptied on collection day, it may be because you have put the wrong type of waste in it. This happens very often. Please check the list of items that are accepted in your bin. If you have any of these items, please contact us on 01273 222000 or visit our website at www.cherwell.gov.uk/recycling and we will advise these items of charge.

**Week one**  
 We collect your blue recycling bin and your brown garden and food waste bin.

**Week two**  
 We collect your green recycling bin and your brown garden and food waste bin.

All bins must be out by 7am on your collection day and brought back to your property by 7pm. The boundary of your property on collection day is the boundary of your property on collection day.

**General Information**  
 Over 80% of our waste can be recycled in Cherwell so we want to help residents to recycle as much as possible. Residents have three bins to deal with their waste:

- a blue bin for recycling,
- a brown bin for garden and garden waste, kitchen caddy, and
- a green bin for waste that goes to an EPR (Energy Recovery Facility)

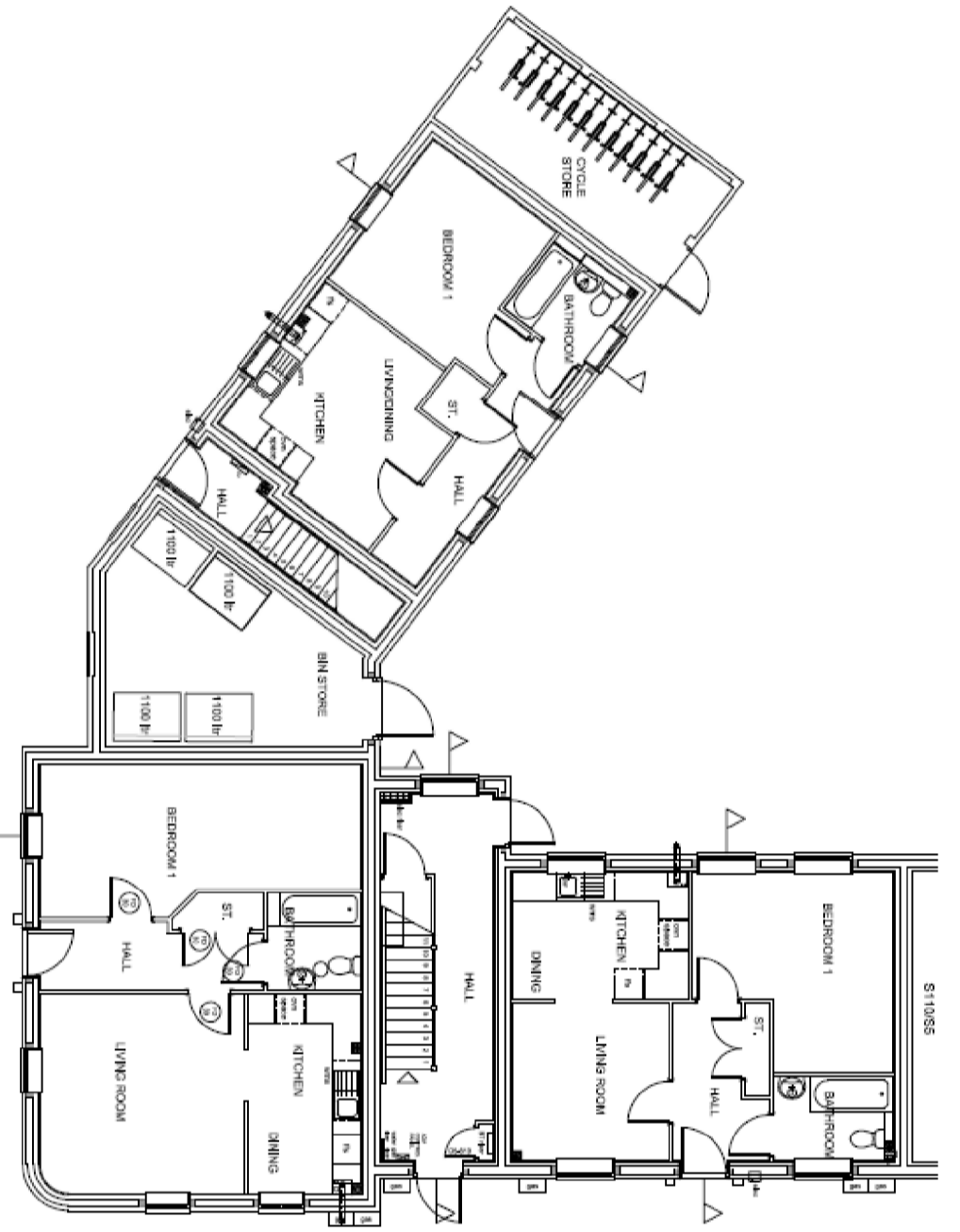
Please contact us if any of the bins are missing. Moving to a new property? If yes please contact us to order your bins. The bins are emptied on alternate weeks, with the blue and brown bins one week, then the green bin the next. Households can have up to five recycling bins, so any combination of 2 blue or brown bins. As nearly 80% of waste can be recycled or composted, each household should only have one green bin, the collection crews do monitor this.

**Residents of flats**  
 We can also collect old batteries and small electrical items at the kerbside. You can put them in separate bags on top of any of your bins on collection day. Remember to keep the battery separate from the small electrical items. We operate an in-house waste and recycling service, please see contracts register to keep the right for any contracts related to the waste and recycling collections.

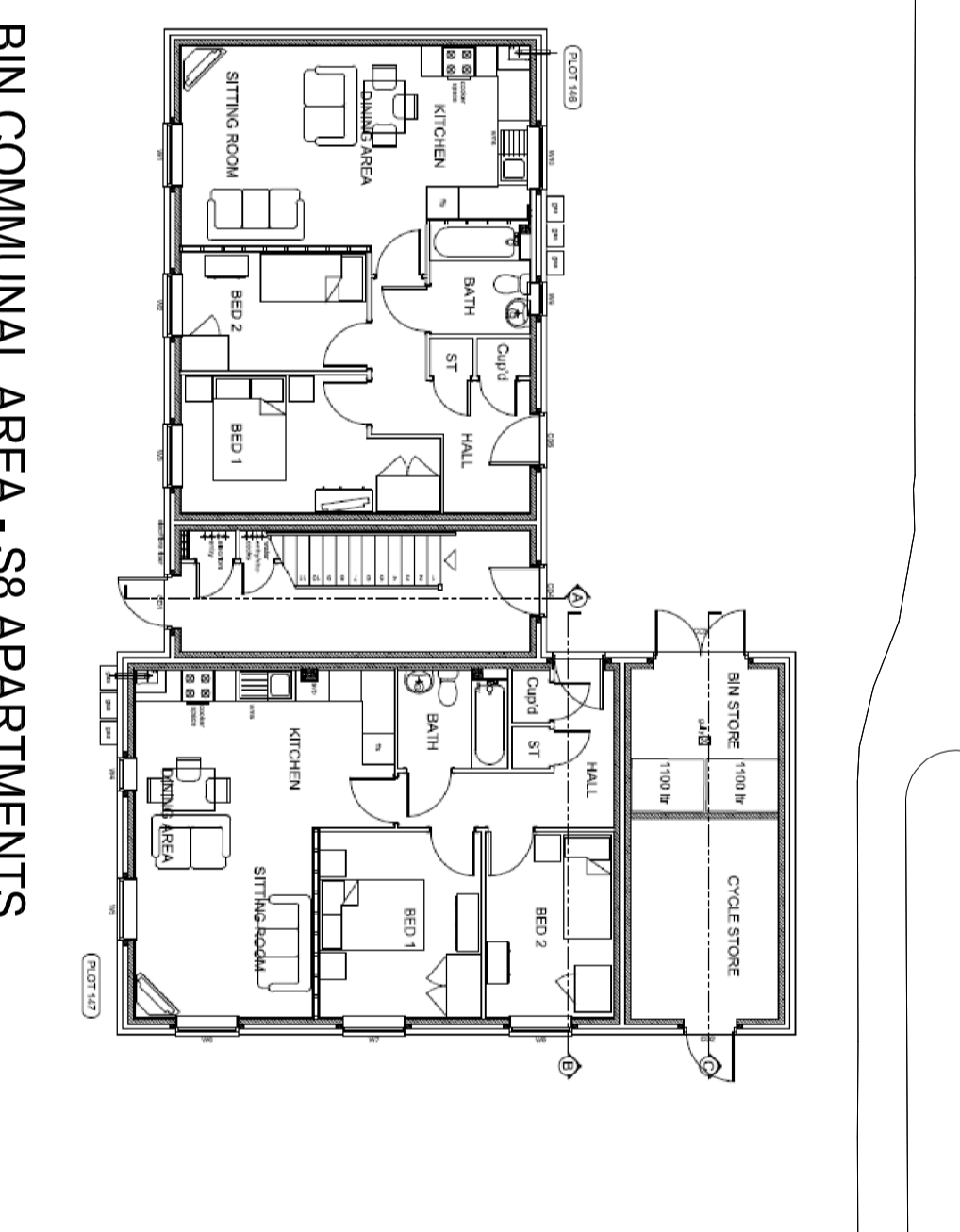


**Residents of flats in the district often share bins in communal areas.** The blue and brown recycling bins are emptied one week, and the green waste bins are emptied the next. Residents in flats now have dedicated caddies for food waste to go in the brown bins in the bin stores. The bins are collected from the bin store so you do not need to move them to the kerbside. Please note we will not collect side waste - please ensure all rubbish/recycling is put in the bin and please keep bin stores tidy.  
 Some developments also have black wheeled bins for the collection of glass bottles and jars - please separate clear, green and brown glass. If your flats development does not have glass recycling facilities and there is space for the additional containers, please contact waste and recycling customer services listed under Contacts (right) who will arrange for a site visit if appropriate.

**BIN COMMUNAL AREA - S7 APARTMENTS**

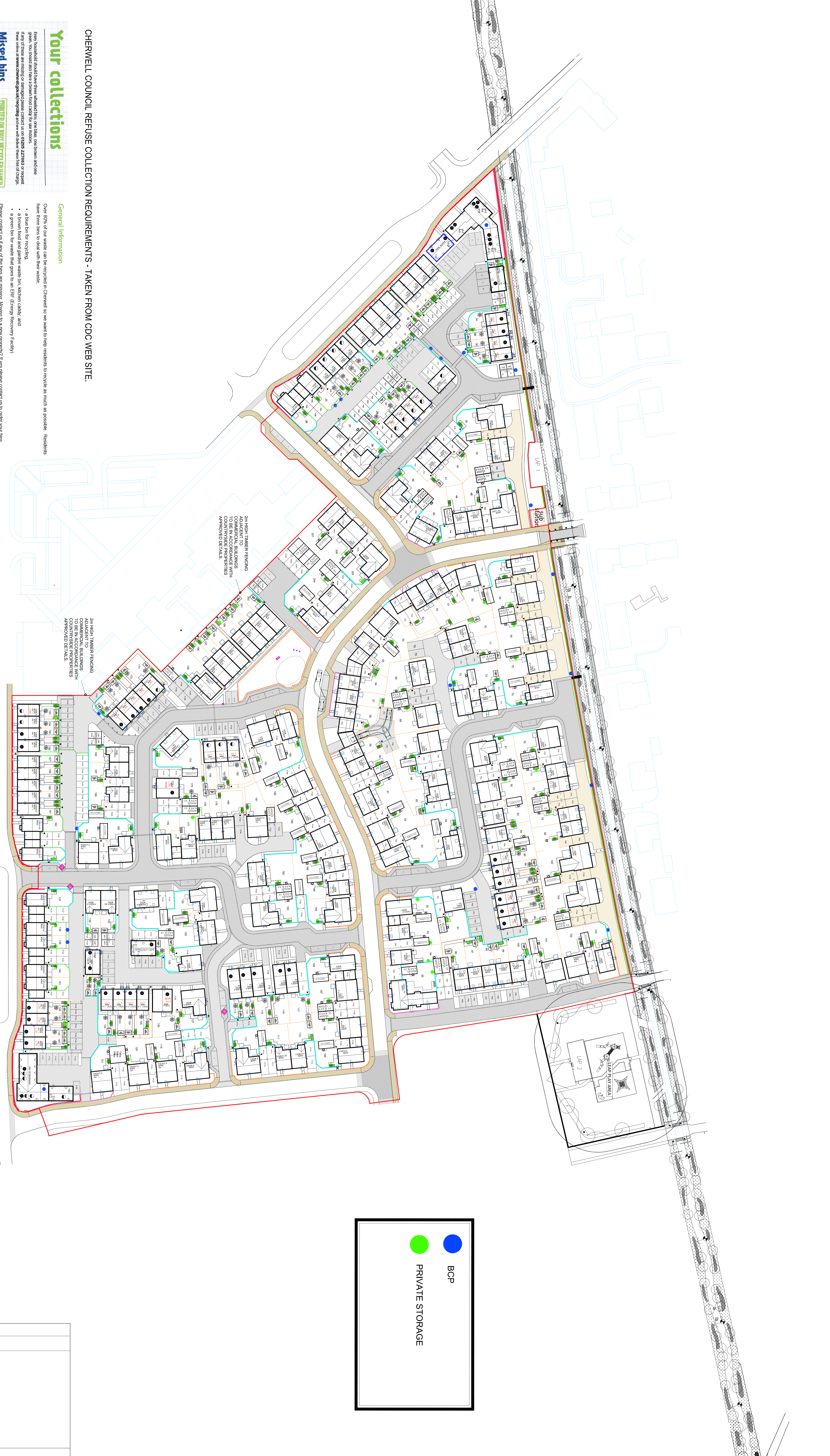


**BIN COMMUNAL AREA - S8 APARTMENTS**



● BCP

● PRIVATE STORAGE



2m HIGH TIMBER FENCING ADJACENT TO BUILDINGS TO BE IN ACCORDANCE WITH COUNTRYSIDE PROPERTIES APPROVED DETAILS.

2m HIGH TIMBER FENCING ADJACENT TO COMMERCIAL BUILDINGS TO BE IN ACCORDANCE WITH COUNTRYSIDE PROPERTIES APPROVED DETAILS.

<p><b>BOVIS HOMES</b>                  Bovis Homes, West Midlands Region                  Gateway House                  Gateway Lane                  B46 3JU                  Tel: 0121 517 000                  Fax: 0121 517 000                  Email: 72880@bovis.co.uk                  DfE: 72880@bovis.co.uk</p>	<p><b>BOCESTER KME</b></p> <p>Ref: Date: Details: _____</p> <p>Drawn: Activity Approved Date: _____</p> <p>Highway Authority Approved Date: _____</p> <p>Drawn: Activity Approved Date: _____</p> <p>Highway Authority Approved Date: _____</p>
<p>DRAWING TITLE: REFUSE STRATEGY PLAN</p> <p>DATE: DEC 16</p> <p>SCALE: 1:200 @ A0</p> <p>DRAWING NO: BKME-02-2900</p>	