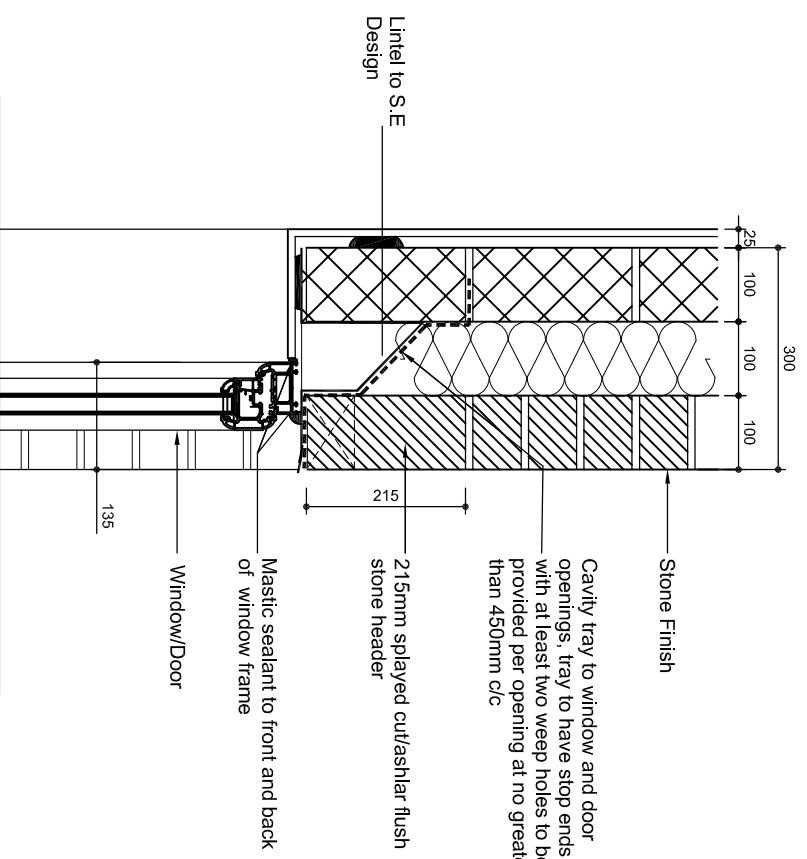
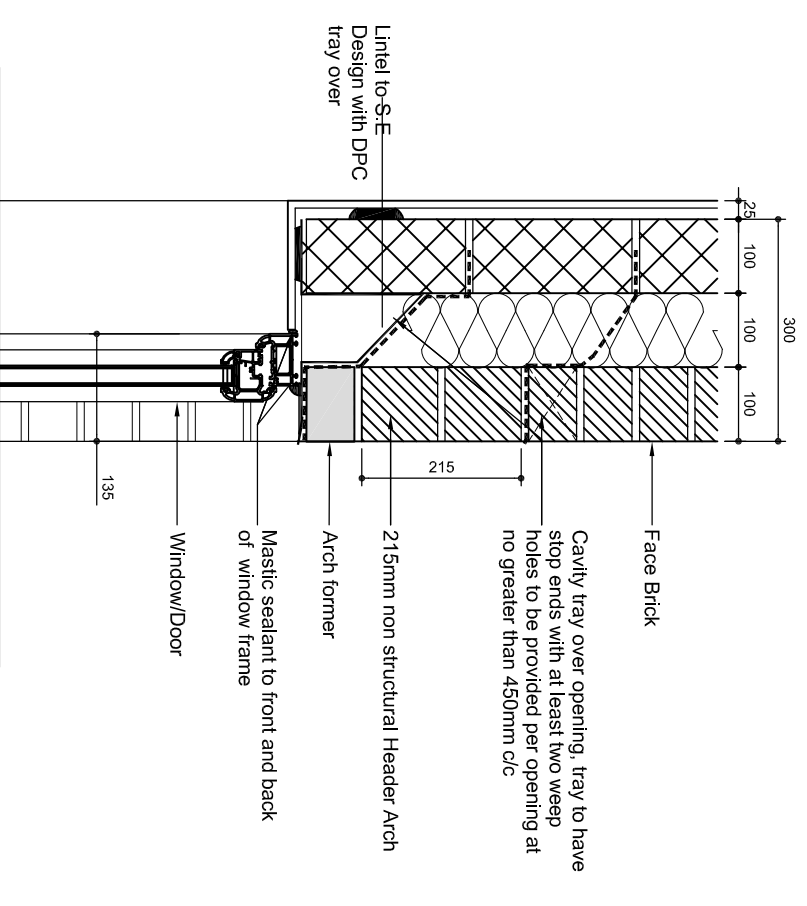


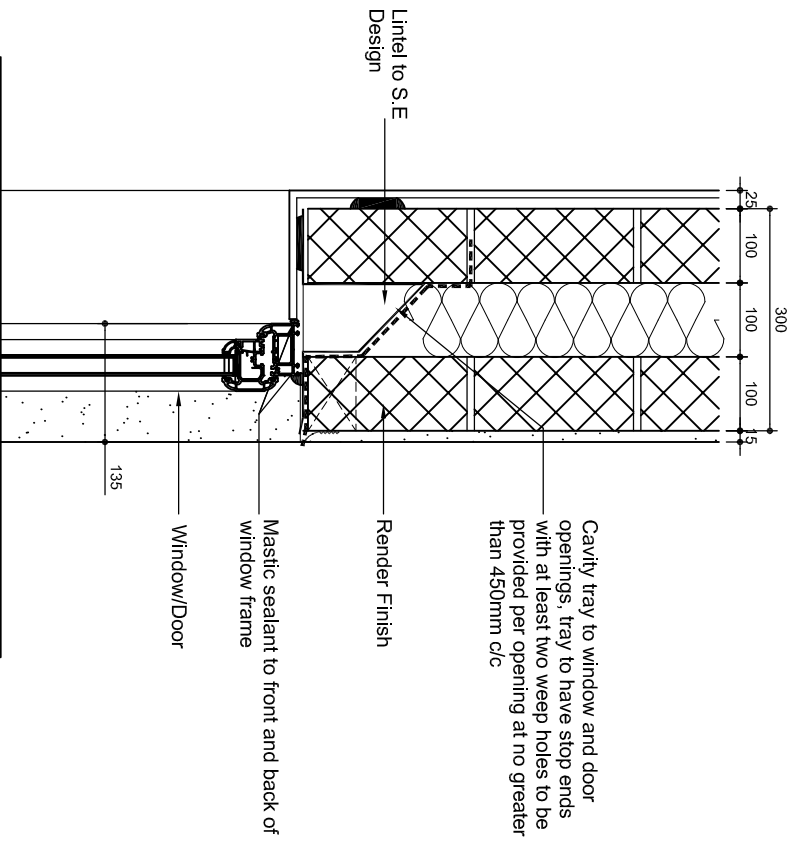
WINDOW/DOOR HEAD DETAIL:
300mm VOULSOIR - BRICK



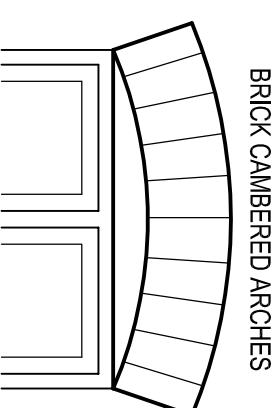
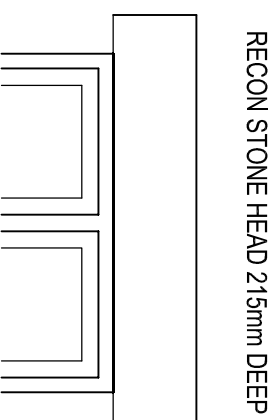
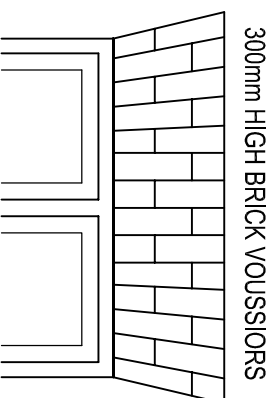
WINDOW/DOOR HEAD DETAIL:
215mm HEADER - STONE



WINDOW/DOOR HEAD DETAIL:
215mm NON STRUCTURAL HEADER ARCH



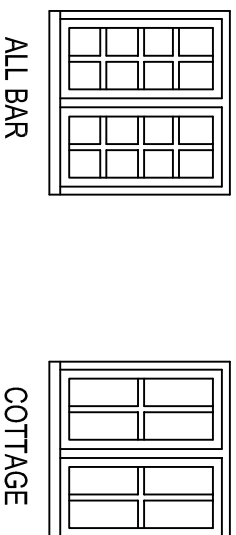
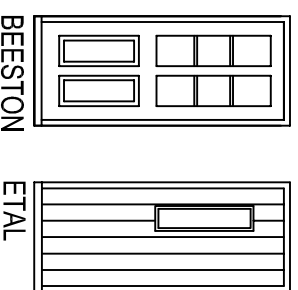
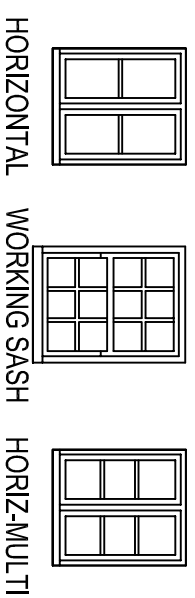
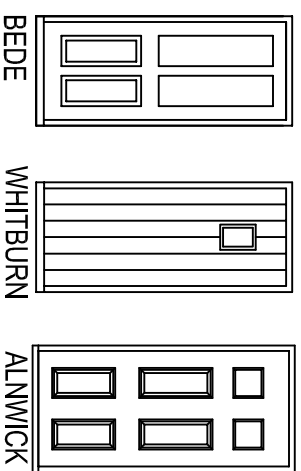
WINDOW/DOOR HEAD DETAIL:
NO HEADER TREATMENT - RENDER



DOORS NTS

WINDOWS NTS

ELEVATIONS OF HEADS STYLES



SITING REF:
Bicester KMLE

DRAWING TITLE:
Window & door heads
1:10 & 1:20 @ A3 - Rev -

