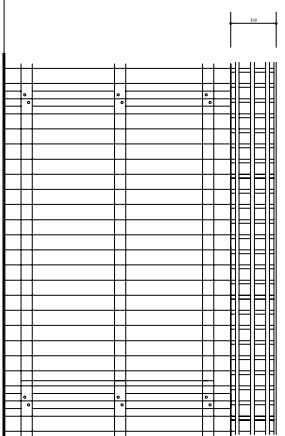
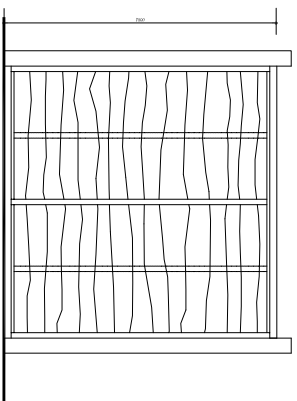


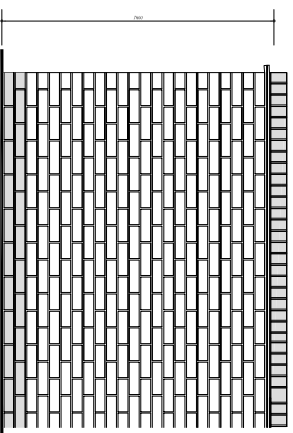
CLOSE BOARD FENCING



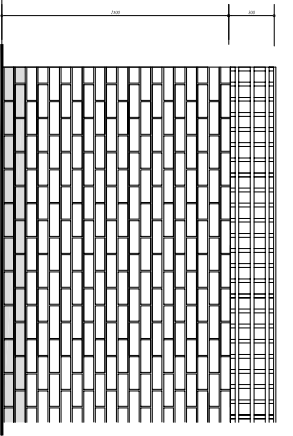
CLOSE BOARD FENCING WITH TRELLIS



LARCH LAP FENCING



1800mm HIGH SCREEN WALL (STRETCHER BOND)
Capping to be engineering brick on edge type FL or FH on
2nd courses plain tiles laid to fall to rear face with 45mm
overhang and joints staggered.

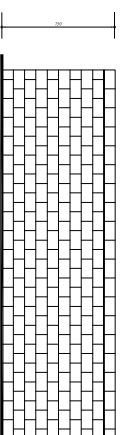


1500mm HIGH SCREEN WALL (STRETCHER BOND)
WITH 300mm HIGH TRELLIS

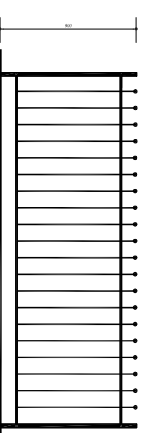


300mm HIGH POST & RAIL FENCING

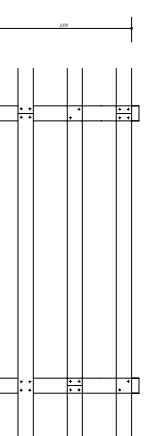
75 x 75mm nom. rail section.



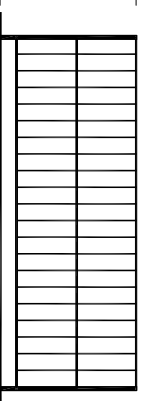
750mm HIGH STONE WALL



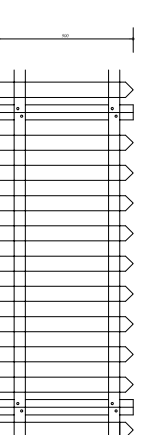
900mm HIGH BALL TOP & RAIL METAL FENCING



1000mm HIGH RANCH STYLE FENCING

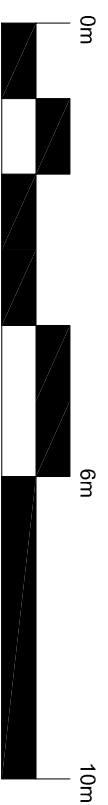


900mm HIGH METAL RAIL FENCING



900mm HIGH TIMBER PICKET FENCING

REV A - 750MM STONE WALL ADDED



BOUNDARY TREATMENTS
BICESTER KME
1:100 @ A3
KME-02-250 REV A