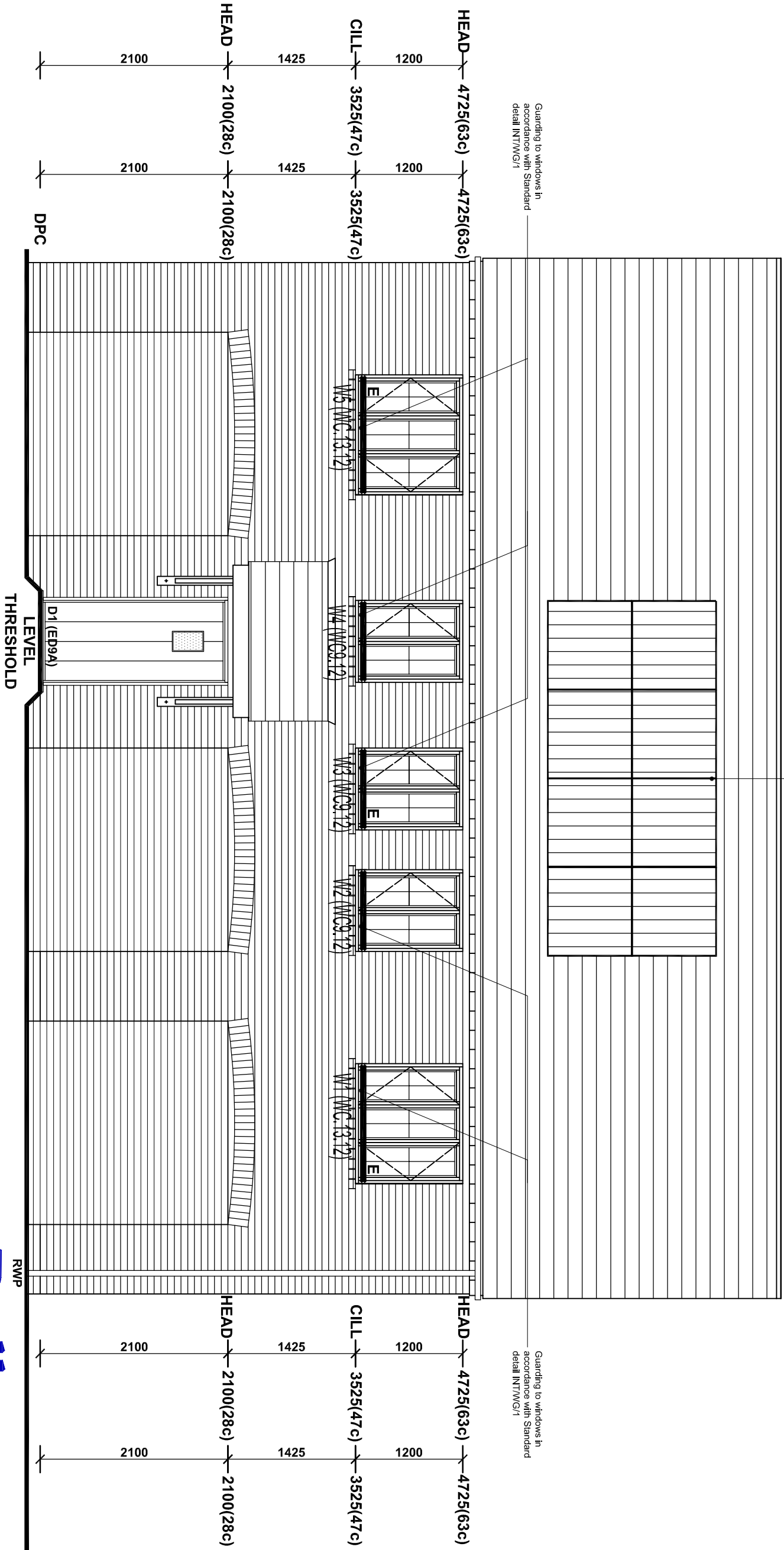


PV panels in accordance with manufacturers design.
Refer to external works drawing for exact location.



Guarding to windows in accordance with Standard detail INT/WG/1

Guarding to windows in accordance with Standard detail INT/WG/1

Roof pitch: 45°

Eaves to be constructed in accordance with eaves detail.

Entrance door style 1.

Entrance canopy style 1.

Facing brick to all elevations as indicated : to be constructed in accordance with manufacturer's recommendations and structural engineer's design.

Leaded light windows to all elevations

Brick heads and cills to all elevations

Provide Code 4 headwork flashing with cavity tray over to all abutments.

All entrance doors to have flush threshold and internal transition strip to suit mobility standards in accordance with Approved Document M, refer to standard detail SUP/DPC/LT.

Refer to development engineers site layout for locations of ramp / steps. Provide stepped DPC 150mm above top of threshold.

Movement joints in accordance with Structural Engineers requirements.

NOTE:
If upper floor operable window is within 800mm of floor, internal guarding will be required in accordance with standard detail INT/WG/1.
Additionally safety glazing will also be required if within 800mm of finished floor level.

FRONT ELEVATION

- Safety Glazing
- Obscure Glazing
- E - Escape Window

BT Customer splice point - BT entry point to external brickwork and internal spur point. Cable to run through the floor void to BT point (where fibre equipment is stored).

HANDINGS	
HANDING	AS
PILOTS	89
OPP	

Revisions:

Ref.	Date	Details
B	21/12/16	BT Customer splice point shown as clients markups.
A	31/10/16	Door & window references updated, entrance door style corrected

BELWAY HOMES NORTHERN-HOME-COUNTIES MILTONKEYNES
Site Location
KINGSMERE KM5 & KM22
BICESTER
OXFORD - VERSION 2
FRONT ELEVATION

SHEET 5 of 12

Scale: 1:50 Date: 08.02.16

Drawing No. 113/257 Rev. B

Drawn By: CDA Checked By: CDA

Cad Ref:

THIS DRAWING IS A COPY-RIGHT
All dimensions to be checked on site or in the workshop before work commences. Only figured dimensions to be worked to. Any discrepancies to be reported to the Architect.

7 The Old Dairy Buildings, Winburn, Northamptonshire, NN22 8PQ.
Tel: 01636 636333 Facsimile: 01636 636123
E MAIL: cartton.design@virgin.net