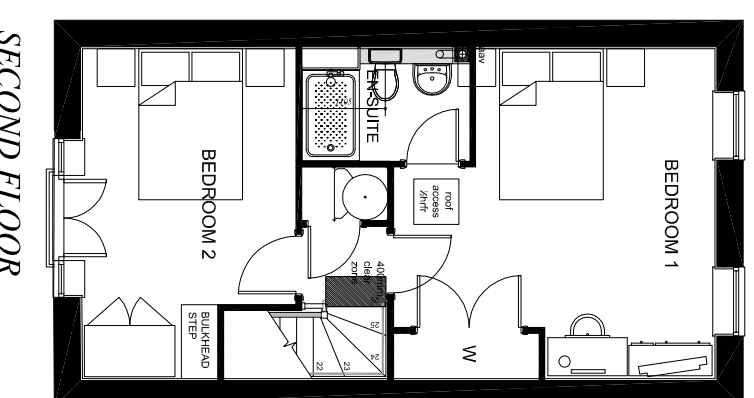
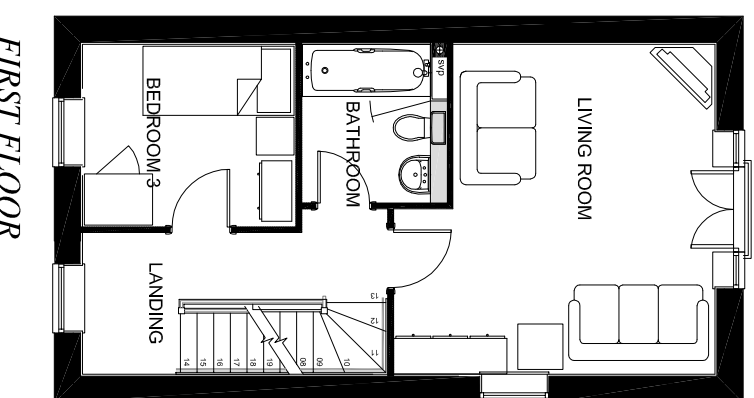
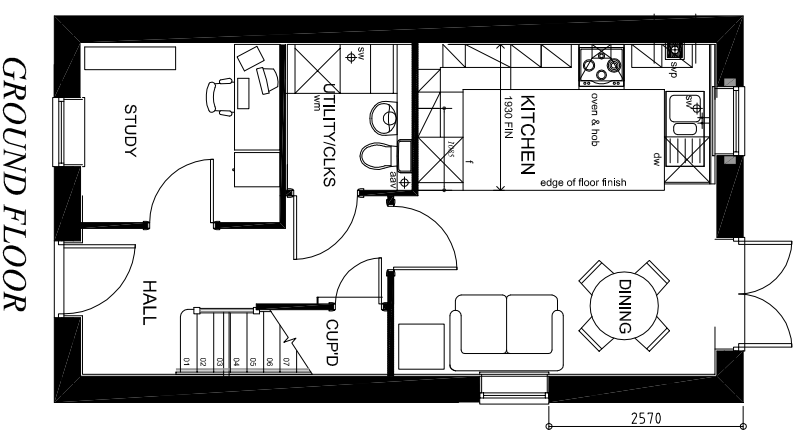
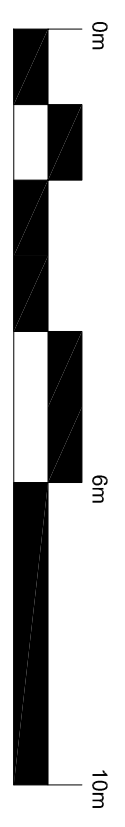
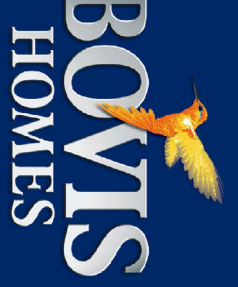


# Kingsmere KME\_Bicester



REV B - JUNE 17 - ELEVATIONAL AND ROOF REDESIGN TO SUIT PLANNERS COMMENTS  
 REV A - 09.05.17 - FRONT AND REAR ELEVATION WINDOW WIDTHS AMENDED TO MATCH ELEVATIONS



- NOTE:**
- Rain water goods to be Black
  - Gas meter boxes to be in ground
  - Electric meter boxes to be finished to match facing material
  - Refer to materials layout for all facing materials
  - Refer to Planning layout for Chimney positions
  - Rear windows and cill detailing not shown as elevations are not visible to the street scene.

**HOUSE TYPE MB PLANNING DRAWING**  
**3 BED TOWN HOUSE**  
**PROPOSED PLANS**  
**1:100 @ A3**  
**HTPD\_P308 MARKER B 03 REV B**