

DO NOT SCALE FROM THIS DRAWING.
USE WRITTEN DIMENSIONS ONLY.
ANY DISCREPANCIES OR SUGGESTED
REVISIONS TO BE REPORTED TO TAYLOR
WIMPEY UK.
DRAWING TO BE READ IN CONJUNCTION
WITH LATEST TAYLOR WIMPEY NATIONAL
CONSTRUCTION SPECIFICATION.

Air Barrier Continuity:
Apply continuous ribbons of adhesive along top of wall. Apply
expanding foam tape or sealant under the skirting & continuous bead
of sealant to the back of the skirting prior to fixing. Where there is
no skirting apply expanding foam tape or sealant between plasterboard
& floor. Seal oil penetrations in the plasterboard.

- LEGEND:**
- 1A. 215mm SPLAYED BRICK FLAT ARCH IN MATCHING COLOUR, FLUSH WITH MAIN BRICKWORK.
 - 1B. 215mm SPLAYED BRICK FLAT ARCH IN CONTRASTING COLOUR, FLUSH WITH MAIN BRICKWORK.
 - 1C. 215mm STONE HEADER FLUSH WITH MAIN BRICKWORK.
 - 1D. 215mm BRICK SOLDIER HEADER IN MATCHING COLOUR, FLUSH WITH MAIN BRICKWORK.
 - 1E. 65x25mm PRESSURE IMPREGNATED TIMBER ON 75mm THICK CONCRETE BACKING, FLUSH WITH MAIN BRICKWORK.
 - 1F. 140x25mm PRESSURE IMPREGNATED TIMBER ON 75mm THICK CONCRETE BACKING, FLUSH WITH MAIN BRICKWORK.
 2. INSULATED STEEL UNTEL WITH CAVITY TRAY OVER. 20mm TIMBER SOFFIT TO UNDERSIDE OF STEEL WHEN TIMBER FRONTED HEADER.
 3. WINDOW TO BE SEALED WITH PROPRIETARY SILICONE MASTIC. COLOUR TO MATCH WINDOWS.
 4. DOUBLE GLAZED WINDOW SECTION VARIES. TO BE INSTALLED IN ACCORDANCE WITH MANUFACTURERS RECOMMENDATIONS.
 5. DPC/SLIP PLANE TO BE INSTALLED OVER CILL STOOL AND EXTENDED UP THE ENDS OF THE CILL TO KEEP IT SEPARATE FROM SURROUNDING BRICKWORK.
 - 6A. 140mm HIGH CAST STONE CILL WITH 100mm ENDS.
 - 6B. 140mm BRICK SOLDIERS, FLUSH WITH MAIN BRICKWORK.
 7. LEADING EDGE OF DPC TO PROJECT 5mm.
 8. MORTAR BED BELOW CILLS TO BE TROWELLED SMOOTH AND ALLOWED TO SET PRIOR TO DPC INSTALLATION MORTAR FOR ONE PIECE CILLS TO BE RESTRICTED BELOW THE STUOLINGS. OPEN SECTION BELOW THE CILL TO BE SEALED WITH MASTIC SEALANT.
 9. STONE CILL TO BE WRAPPED IN BLACK POLYTHENE DPC.
 10. PROPRIETARY INSULATED CAVITY CLOSER/VERTICAL DPC SYSTEM.
 11. CILL BOARD AS SITE SPECIFICATION.
 12. MASTIC SEALANT BETWEEN U/S CILLBOARD AND WALL.

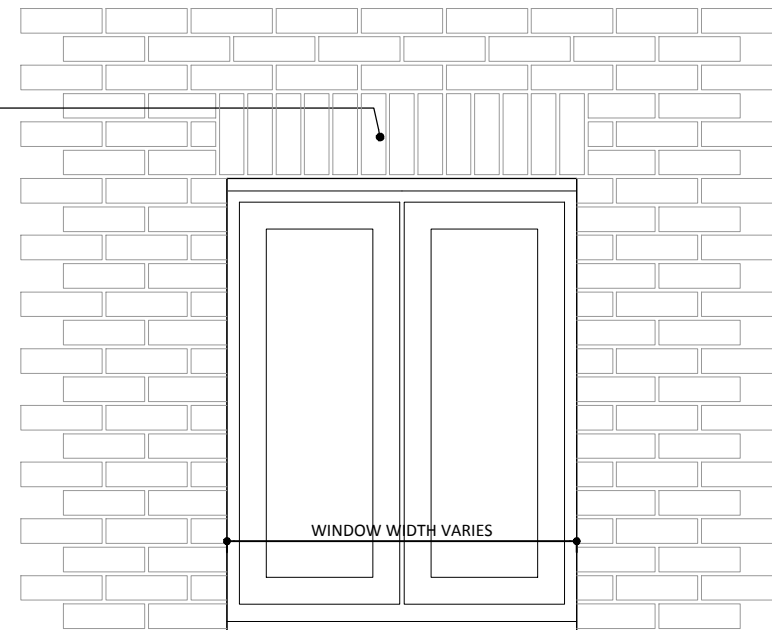
NOTE: STOOLED CILLS SHOULD BE BEDDED ACCORDING TO THE RECOMMENDATIONS OF BS 8000 PT3 & NHBC I.E. THE ENDS SHOULD BE MORTAR BEDDED DURING CONSTRUCTION, FOLLOWED BY THE POINTING OF THE REMAINING JOINT WHEN THE CONSTRUCTION IS COMPLETE.

IF USING A FORTICRETE CAST STONE PRODUCT COMPRESSIVE GRADE (M2) DESIGNATION MORTAR SHOULD BE SPECIFIED, BUT IN NO CASE SHOULD ANYTHING STRONGER THAN (M4) BE USED. A MORTAR CONTAINING LIME IS RECOMMENDED TO ACCOMMODATE MOVEMENT.

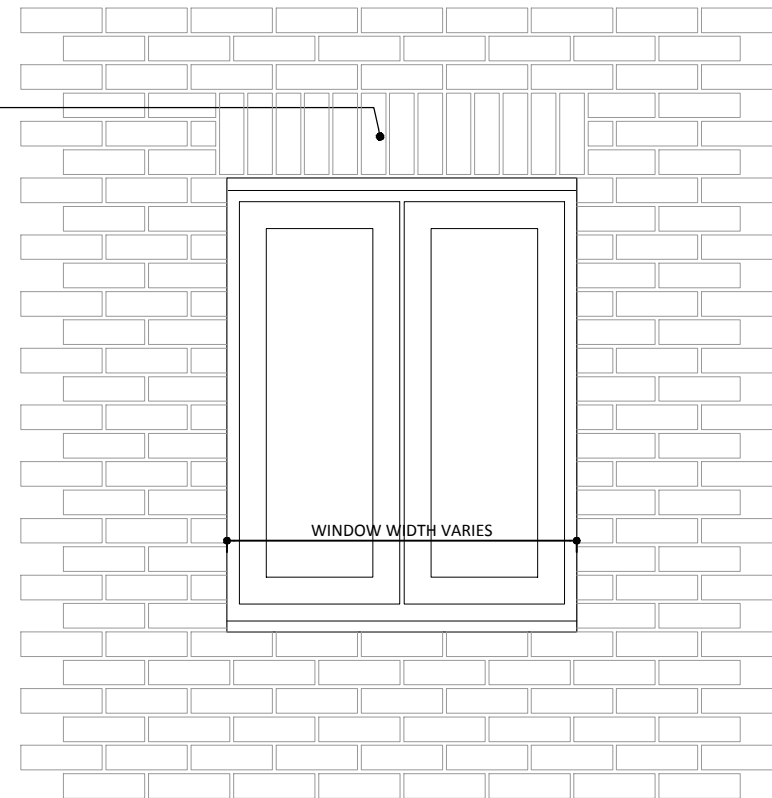
215mm BRICK SOLDIER HEADER IN MAIN BRICK MATCHING COLOUR, FLUSHED WITH MAIN BRICKWORK

140mm BRICK SOLDIERS IN MATCHING COLOUR, FLUSH WITH MAIN BRICKWORK

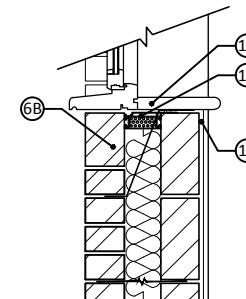
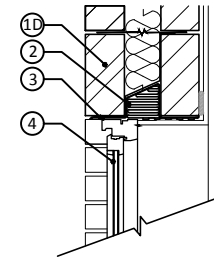
215mm BRICK SOLDIER HEADER IN MAIN BRICK MATCHING COLOUR, FLUSHED WITH MAIN BRICKWORK



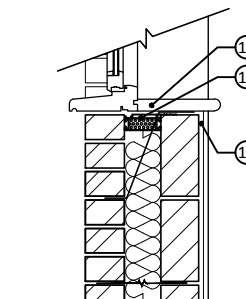
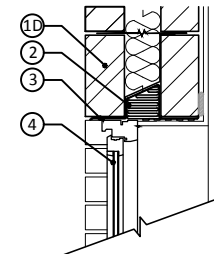
SOLDIER HEAD & BRICK CILL
BRICK ELEVATION
SCALE 1:20



SOLDIER HEAD
BRICK ELEVATION
SCALE 1:20

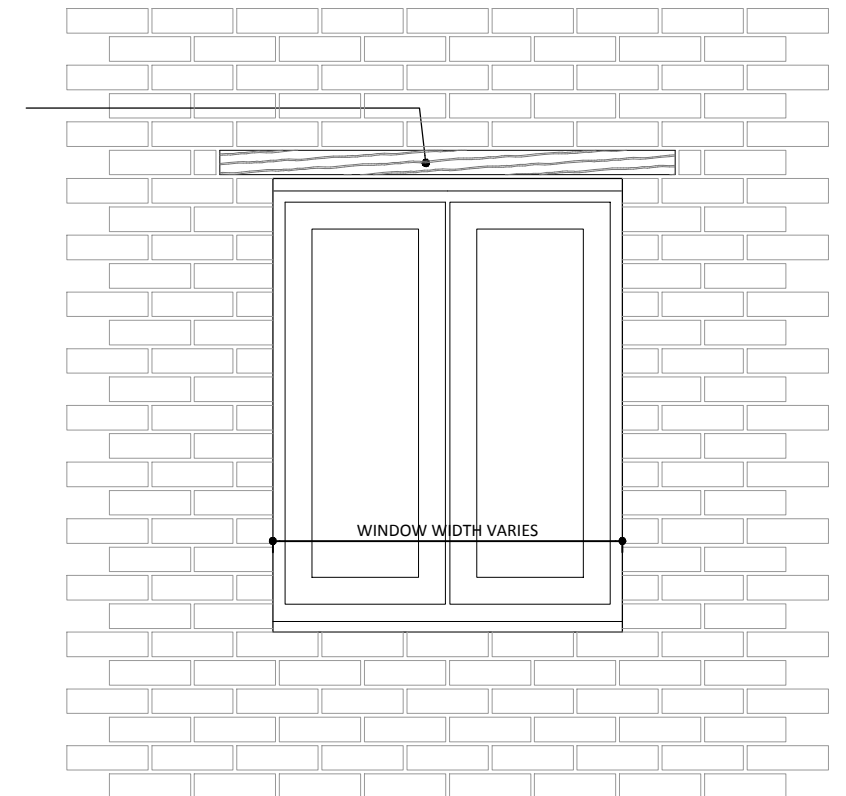


BRICK HEAD & BRICK CILL
SECTION
SCALE 1:20
BRICK ELEVATION

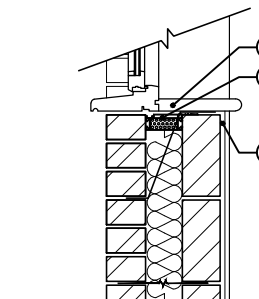
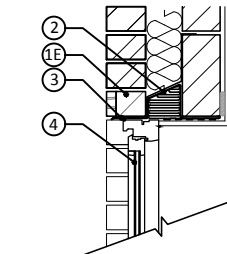


BRICK HEAD
SECTION
SCALE 1:20
BRICK ELEVATION

65mm TIMBER FRONTED HEADER



TIMBER FRONTED HEAD
BRICK ELEVATION
SCALE 1:20



TIMBER FRONTED HEAD
SECTION
SCALE 1:20
BRICK ELEVATION

REV A: WINDOW STYLES AMENDED TO SHOW BALANCED CASEMENTS. MAY 2017

Date	Rev	Description
<h1 style="margin: 0;">Taylor Wimpey</h1>		
<p>Taylor Wimpey Oxfordshire, Windrush Court, Suite J, Abingdon Business Park, Abingdon, Oxfordshire, OX14 1SY t: 01235 541900 f: 01235 541901</p>		
<p>Project Title AUDLEY GARDENS CHESTERTON</p>		
<p>Drawing Title WINDOW DETAILS SHEET 2 OF 3</p>		
Date	Drawn	Checked
02/17	LSD	LSD
		Scale
		1:20 @ A3
<p>Consultant Preston Lodge Court, Preston Deanery, Northampton, NN7 2DS t: 01604 871199 e: info@lsdev.co.uk</p>		
<p>Drawing Number LSD129.06.02</p>		<p>Rev. A</p>

