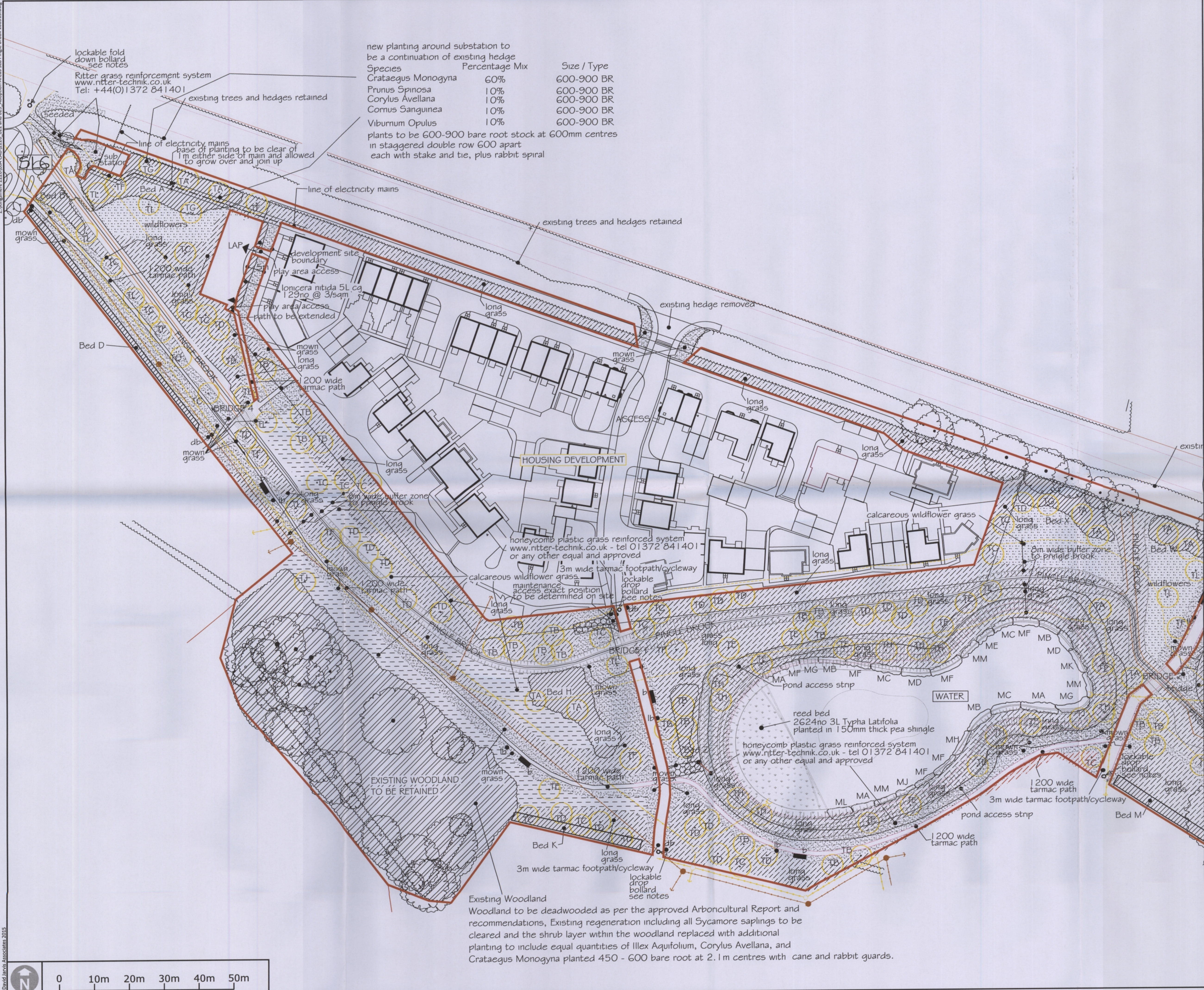


Z:\Kingsmere 2226\01A CAD\2226_022 and 023 Adoption Areas SL8 Pingle Brook 160315.dwg

©David Jarvis Associates 2015



new planting around substation to be a continuation of existing hedge

Species	Percentage Mix	Size / Type
Crataegus Monogyna	60%	600-900 BR
Prunus Spinosa	10%	600-900 BR
Corylus Avellana	10%	600-900 BR
Cornus Sanguinea	10%	600-900 BR
Viburnum Opulus	10%	600-900 BR

plants to be 600-900 bare root stock at 600mm centres in staggered double row 600 apart each with stake and tie, plus rabbit spiral

KEY

AREA TO BE OFFERED FOR ADOPTION

Notes
Drawing referenced from David Fountain Designs Ltd - DFD/BIC/PB/L5 Rev ZR

Drawing Revision

Rev Date	Description

Drawing Status

DAVID JARVIS ASSOCIATES
DAVID JARVIS ASSOCIATES LIMITED
 1 Tennyson Street Swindon Wiltshire SN1 5DT
 Tel: 01793 612173 Fax: 01793 613625
 Email: mail@davidjarvis.biz

Client
COUNTRYSIDE PROPERTIES (UK) Ltd

Project
KINGSMERE - CHERWELL DISTRICT COUNCIL ADOPTION AREAS

Drawing Title
SL8 PINGLE BROOK (West)

Scale	Sheet Size	Date
1:500	A1	MARCH 2015
Drawing No.	2226/022	Revision
		-