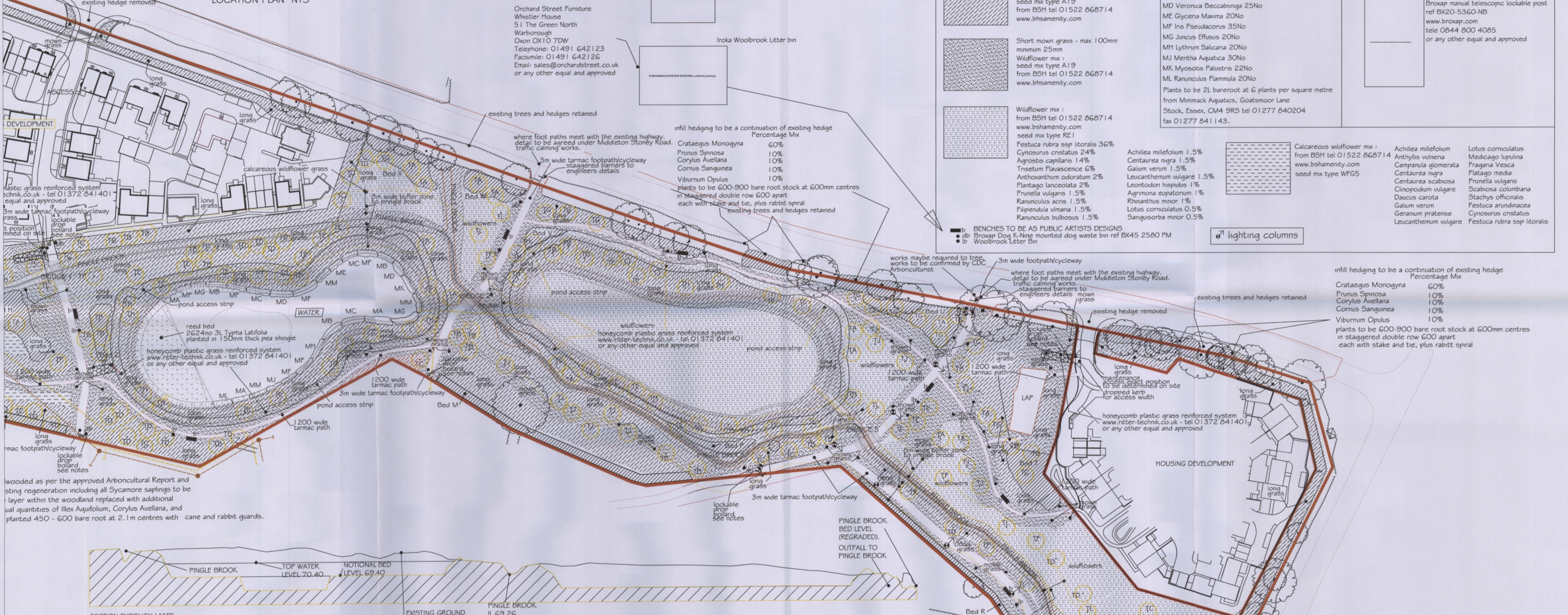


- Size / Type
 500-900 BR
 500-900 BR
 500-900 BR
 500-900 BR
 500-900 BR
 30mm centres

existing trees and hedges retained



Orchard Street Furniture
 Whistler House
 51 The Green North
 Warborough
 Oxon OX10 7DW
 Telephone: 01491 642123
 Facsimile: 01491 642126
 Email: sales@orchardstreet.co.uk
 or any other equal and approved

Iroka Woolbrook Letter bin

infill hedging to be a continuation of existing hedge

Species	Percentage Mx
Crataegus Monogyna	60%
Prunus Spinosa	10%
Corylus Avellana	10%
Cornus Sanguinea	10%
Viburnum Opulus	10%

plants to be 600-900 bare root stock at 600mm centres in staggered double row 600 apart each with stake and tie, plus rabbit spiral

Planting Schedule for thicket areas

Species	Percentage Mx	Size / Type
Crataegus Monogyna	30%	600-900 BR
Salix Caprea	20%	600-900 BR
Acer Campestre	15%	600-900 BR
Prunus Spinosa	15%	600-900 BR
Corylus Avellana	5%	600-900 BR
Cornus Sanguinea	5%	600-900 BR
Rosa Arvensis	5%	600-900 BR
Viburnum Opulus	2.5%	600-900 BR
Ulmus Glabra	2.5%	600-900 BR

plants to be 600-900 bare root stock at 1m centres each with stake and tie, plus rabbit spiral

Hedge Thicket Planting Beds D,K,M,R

Species	Percentage Mx	Size / Type
Crataegus Monogyna	60%	600-900 BR
Prunus Spinosa	10%	600-900 BR
Corylus Avellana	10%	600-900 BR
Cornus Sanguinea	10%	600-900 BR
Viburnum Opulus	10%	600-900 BR

plants to be 600-900 bare root stock at 600mm centres in staggered double row 600 apart each with stake and tie, plus rabbit spiral to be kept clipped to 1.00m high

Specimen Trees

Ref	Species	Size / Type
TA	Quercus Robur	10-12cm girth Standard RB
TB	Betula Pendula	10-12cm girth Standard RB
TC	Prunus Avium Plena	10-12cm girth Standard RB
TD	Sorbus Ana	10-12cm girth Standard RB
TE	Alnus Glutinosa	10-12cm girth Standard RB
TF	Quercus Petraea	10-12cm girth Standard RB
TG	Fagus Sylvatica	10-12cm girth Standard RB
TH	Salix Alba	10-12cm girth Standard RB
TJ	Tilia Cordata	10-12cm girth Standard RB
TK	Acer Platanoides	10-12cm girth Standard RB
TL	Populus Tremula	10-12cm girth Standard RB

NOTE :- ALL TREES TO BE PLANTED NO CLOSER THAN 2M FROM ANY FOOTPATHS

NATIVE MARGINAL PLANTING TO POND EDGE

MA Spagnum Erectum	30No
MB Caltha Palustris	25No
MC Carex Pendula	35No
MD Veronica Beccabunga	25No
ME Glycyrrhiza Maxima	20No
MF Ins Pseudacorus	35No
MG Juncus Effusus	20No
MH Lythrum Salicaria	20No
MJ Mentha Aquatica	30No
MK Myosotis Palustris	22No
ML Ranunculus Flammula	20No

Plants to be 2L bare root at 6 plants per square metre from Mimack Aquatics, Goatsmoor Lane Stock, Essex, CM4 9RS tel 01277 840204 fax 01277 841143.

Broxap manual telescopic lockable post ref BX20-5360-NB
 www.broxap.com
 tele 0844 800 4085
 or any other equal and approved

Calcareous wildflower mix :

Achillea millefolium	1.5%
Centaurea nigra	1.5%
Galium verum	1.5%
Leucanthemum vulgare	1.5%
Leontodon hispidus	1%
Agrimonia eupatorioides	1%
Rhinanthus minor	1%
Lotus corniculatus	0.5%
Sanguisorba minor	0.5%

seed mix type WFG5

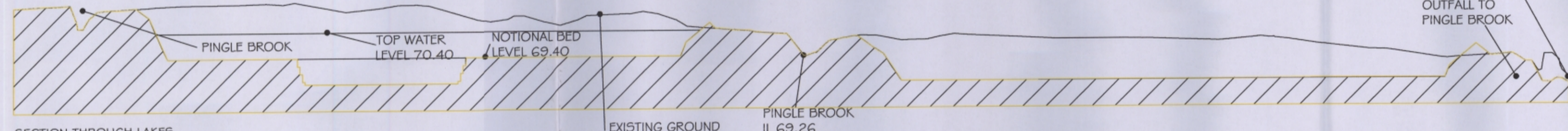
Achillea millefolium	Lotus corniculatus
Anthyllus vuluena	Medicago lupulina
Campanula glomerata	Fragaria Vesca
Centaurea nigra	Plantago media
Centaurea scabiosa	Prunella vulgaris
Cinopodium vulgare	Scabiosa columbana
Daucus carota	Stachys officinalis
Galium verum	Festuca arundinacea
Geranium pratense	Cynosurus cernuus
Leucanthemum vulgare	Festuca rubra ssp litoralis

lighting columns

- Revision ZG Planners Comments added 12/12/2013
- Revision ZF Planners Comments added 28/08/2013
- Revision ZE Sub Station repositioned and landscaping revised accordingly 13/2/2013
- Revision ZD Play Areas combined and repositioned, landscaping redesigned accordingly
- Revision ZC Ash trees replaced 12/12/12
- Revision ZB added 23/8/2012
- Revision ZA Footpath lighting-bollards and maintenance access added 23/8/2012
- Revision Z Minor revisions 30/5/2012
- Revision Y Planners comments added 28/5/2012
- Revision X KM21 Play area moved 1m from boundary 20/2/2012
- Revision V Junction Barriers added 19/01/2012
- Revision U Planners comments added 17/01/2012
- Revision T Bench Positions revised 9/11/2011
- Revision S Planners comments added 31/10/2011
- Revision R Buffer Zone revised 26/7/2011
- Revision Q Bridge numbers added 13/05/2011
- Revision P footpaths revised March 2011

- Revision ZR Play areas revised 3/2/2014
- Revision ZQ Planners comments added 12/12/2013
- Revision P footpath adjacent to existing woodland re-aligned Feb 2011 therefore planting revised
- Revision N Planting removed to allow visibility from housing Feb 2011
- Revision M red lines added for reserved matter drawings Dec 2010
- Revision L Planners comments added June 2010
- Revision K general revisions June 2010
- Revision J Planners comments added April 2010
- Revision H Planners comments added April 2010
- Revision G Planners comments added April 2010
- Revision F Planners comments added April 2010
- Revision E note ref grass reinforced strip added March 2010
- Revision D general revisions Feb 2010
- Revision C drainage added Jan 2010
- Revision B general revisions 18th Dec 2008

Existing Woodland
 Woodland to be deadwooded as per the approved Arboncultural Report and recommendations. Existing regeneration including all Sycamore saplings to be cleared and the shrub layer within the woodland replaced with additional planting to include equal quantities of Ilex Aquifolium, Corylus Avellana, and Crataegus Monogyna planted 450 - 600 bare root at 2.1m centres with cane and rabbit guards.



Countryside STRATEGIC

Countryside Properties (Special Projects) Ltd
 Countryside House
 The Drive, Broomfield, Essex, CM11 3AT
 Telephone 01277 260000 Facsimile 01277 600090
 www.countryside-properties.co.uk E-mail: Countryside@dal.pipes.com

Architectural and Landscape Design Consultants
 The Design Studio
 71 Belmont Avenue
 Wickford
 Essex, SS12 0HG
 Tel: 01275 481344
 Email: david.fountain@sky.com
 mobile: 07730 06453
 www.davidfountain.com
 www.ascaris.com
 www.darwinforwards.com

Client: Countryside Properties (Special Projects) Ltd
 Drawing Name: BICESTER OXFORD
 Drawing No: DFD/BIC/PBL5 SHEET 1 OF 2
 Rev: ZR
 Drawn by: DAVID FOUNTAIN
 Scale(s): 1:500@AO
 Date: 11/12/2008