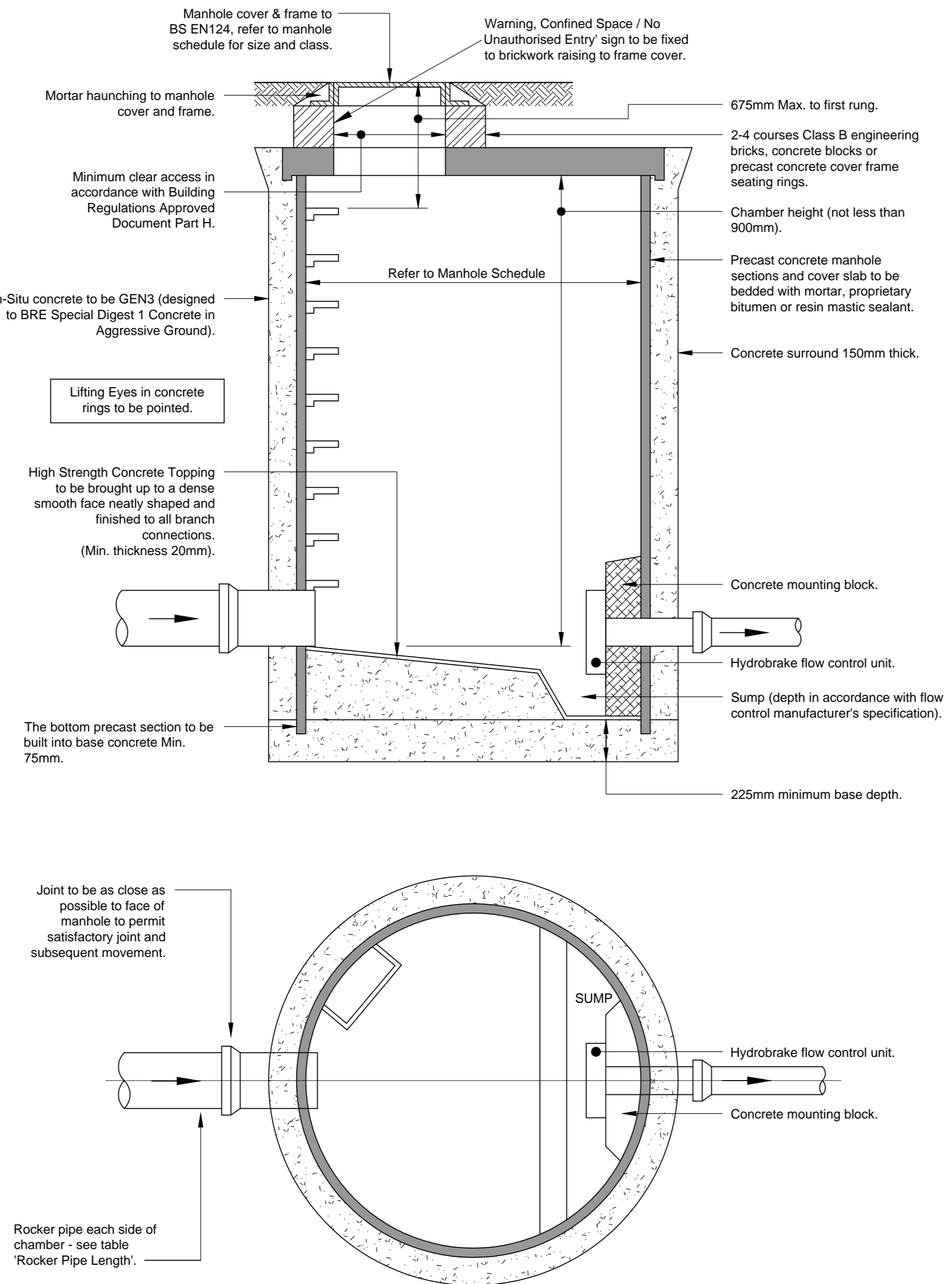


TYPICAL MANHOLE DETAIL - TYPE B
Max. Depth from Cover to Soffit of Pipe 3m
1:20

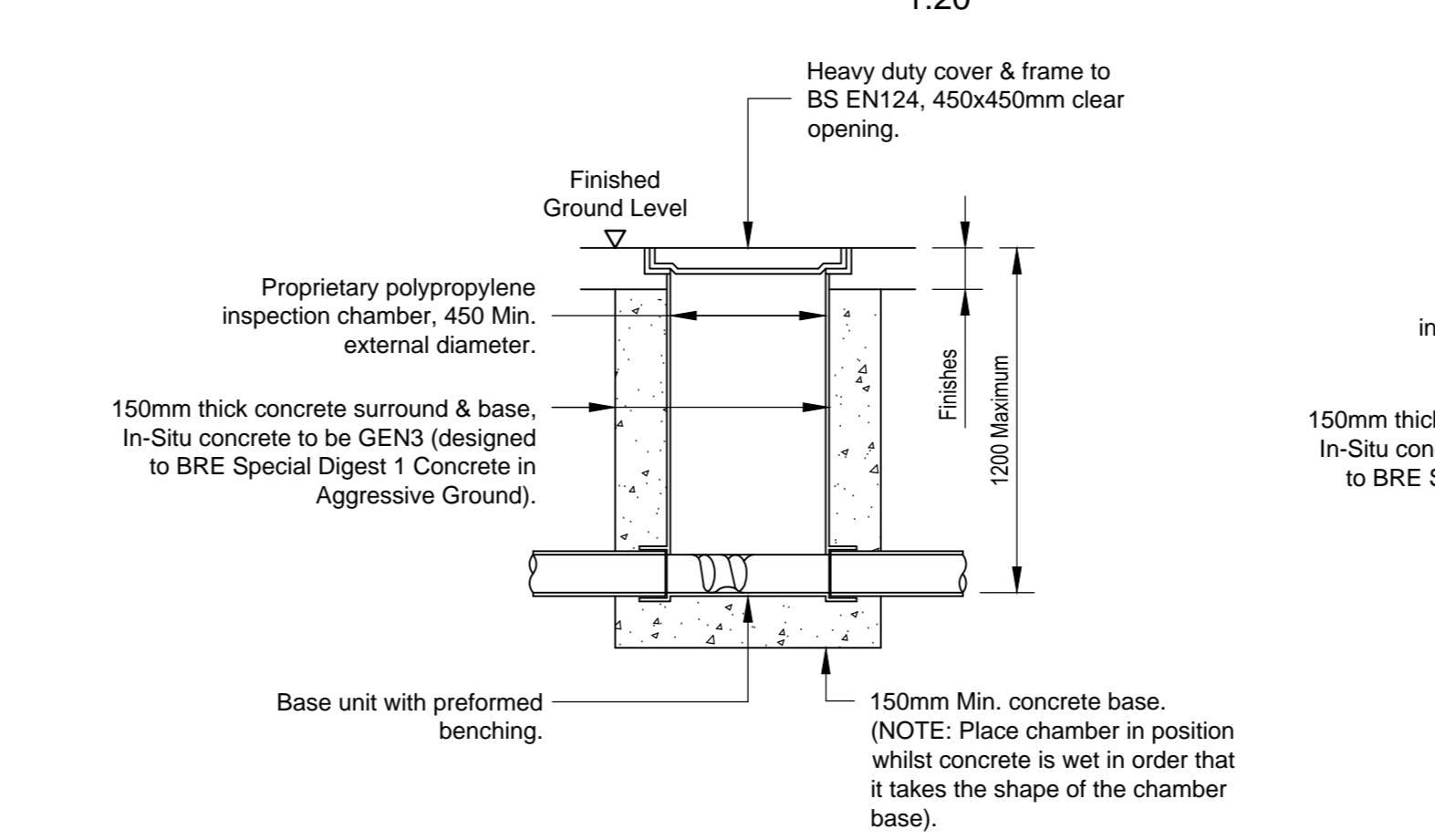


TYPICAL HYDROBRAKE FLOW CONTROL MANHOLE
1:20

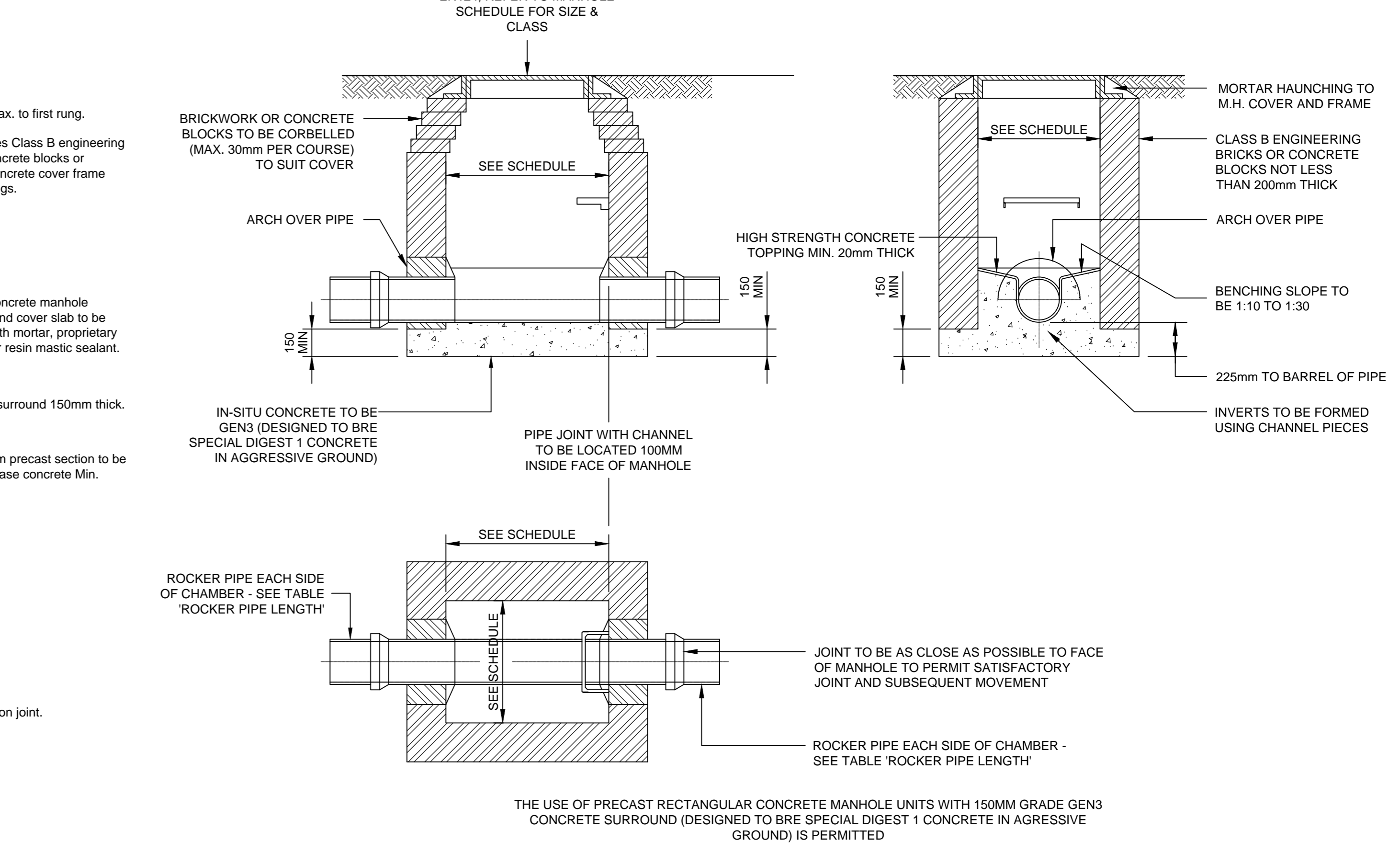
ROCKER PIPE LENGTH

NOMINAL DIAMETER OF PIPE (mm)	EFFECTIVE LENGTH (m)
150 - 600	0.600
601 - 750	1.000
OVER 750	1.250

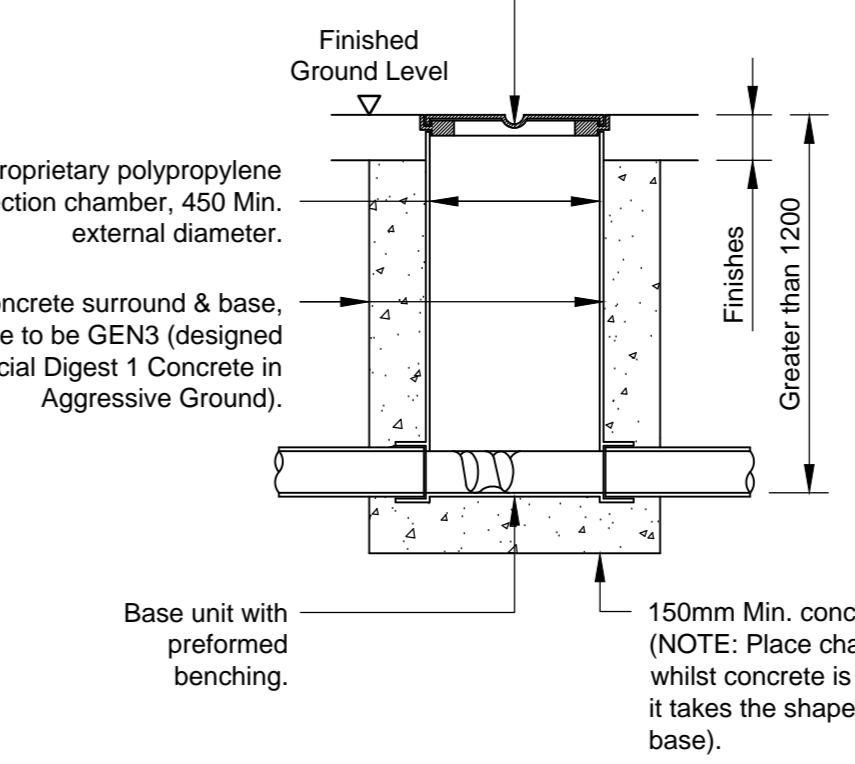
PC RING CATCHPIT MANHOLE DETAIL
1:20



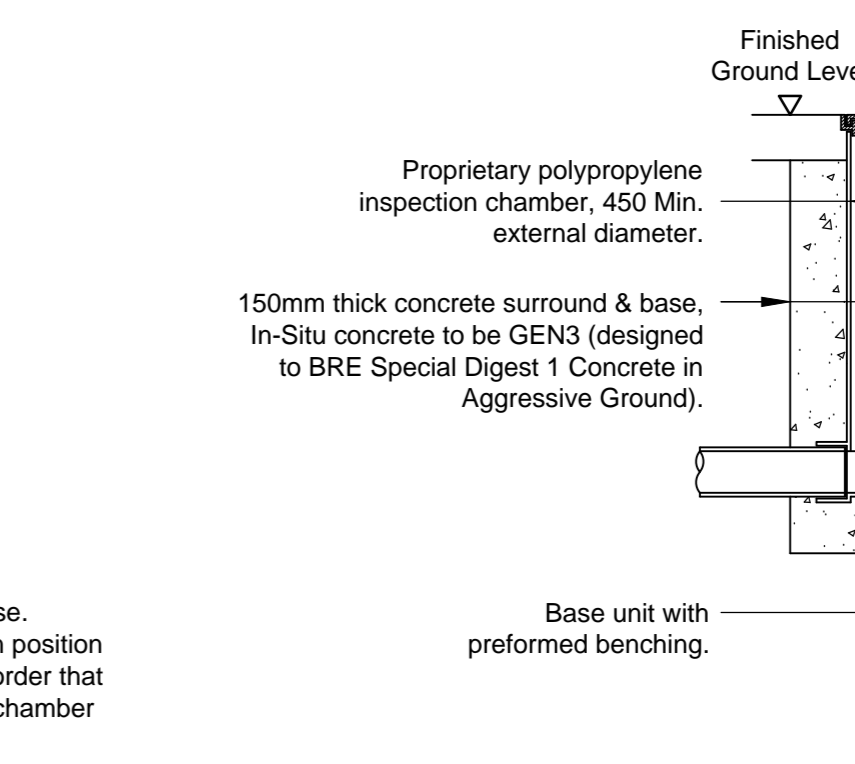
450 Dia PLASTIC INSPECTION CHAMBER DETAIL FOR USE IN TRAFFICKED AREAS (Cars Only)
(PIC)
1:20



TYPICAL MANHOLE DETAIL - TYPE D
DEPTH FROM COVER LEVEL TO SOFFIT OF PIPE LESS THAN 1m



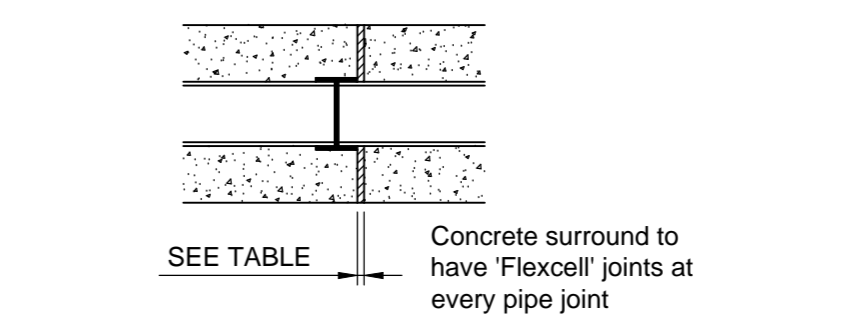
450 Dia RESTRICTED ACCESS PLASTIC INSPECTION CHAMBER
(RAC)
1:20



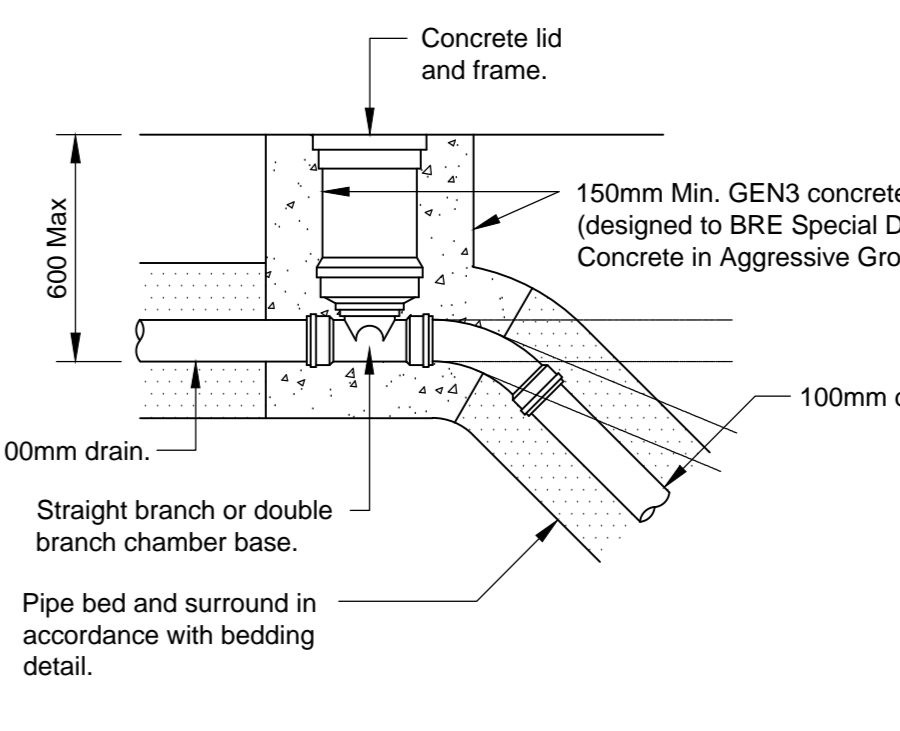
450 Dia PLASTIC INSPECTION CHAMBER DETAIL FOR USE IN LANDSCAPED/PEDESTRIAN AREAS
(PIC)
1:20

COMPRESSIBLE FILLER & PACKING FOR PIPELINES

Nominal diameter of pipe (mm)	Thickness of Compressible Filler (mm)
Less than 450	18
450 - 1200	36
Exceeding 1200	54



EXPANSION JOINT DETAIL TO PIPE CONCRETE BED & SURROUND
1:20

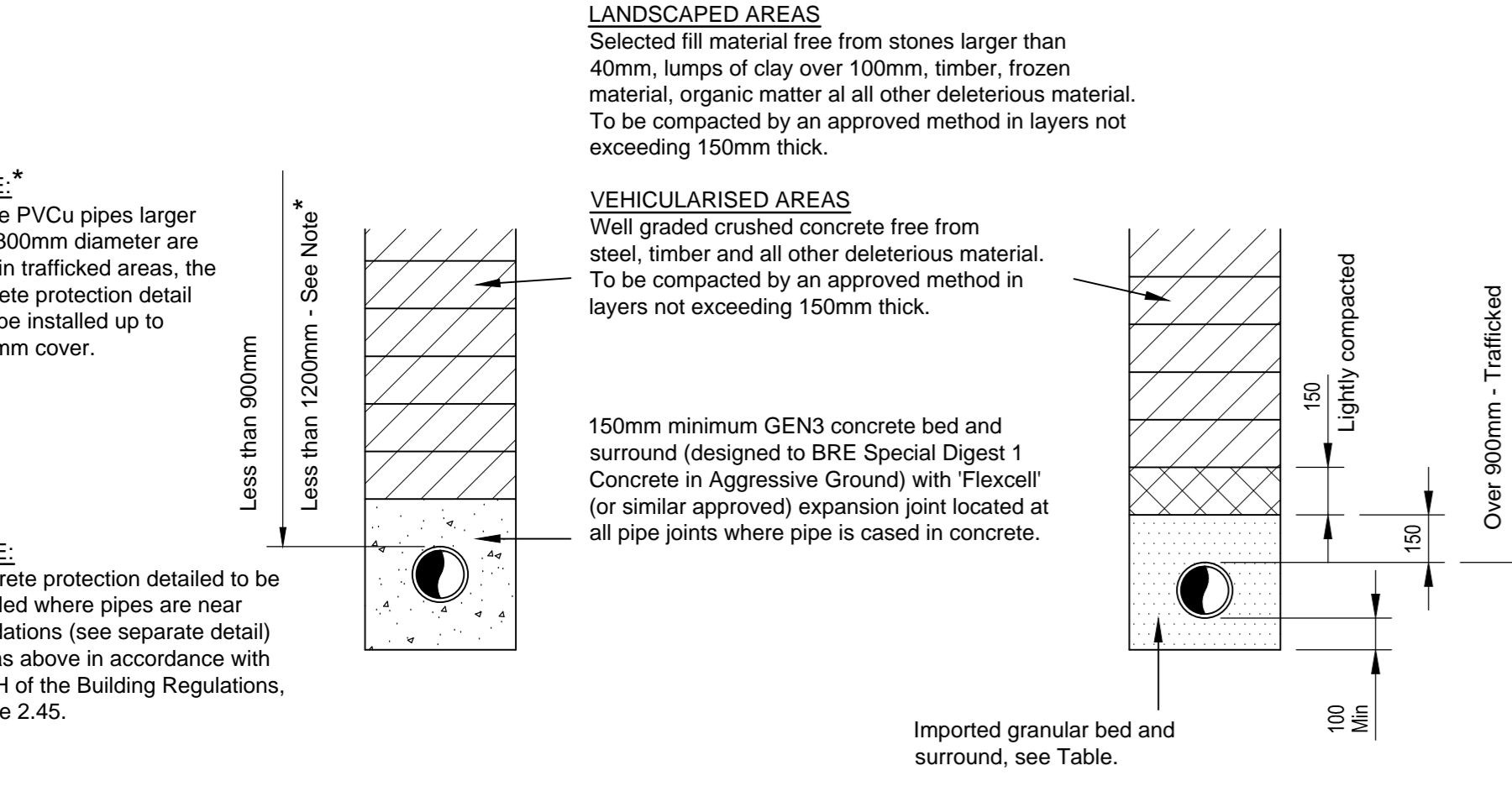


MINI-ACCESS CHAMBER DETAIL (SIC)
1:20

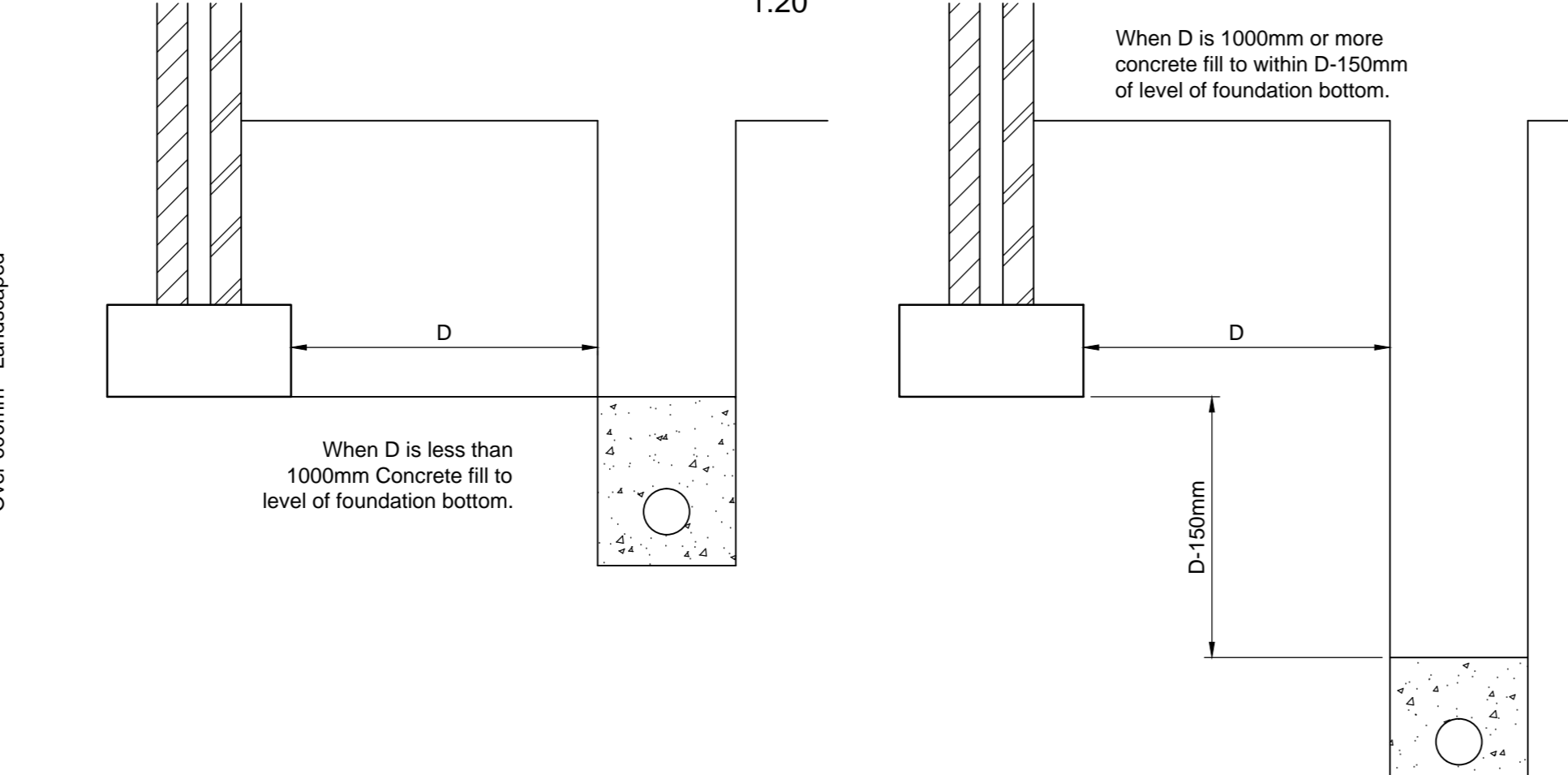
DRAINAGE NOTES:
REFER TO PEP DRAWING 455316-PEP-00-22-DR-D-1200 FOR NOTES

CDM REGULATIONS 2015: DESIGNERS NOTES ON SIGNIFICANT RESIDUAL RISKS

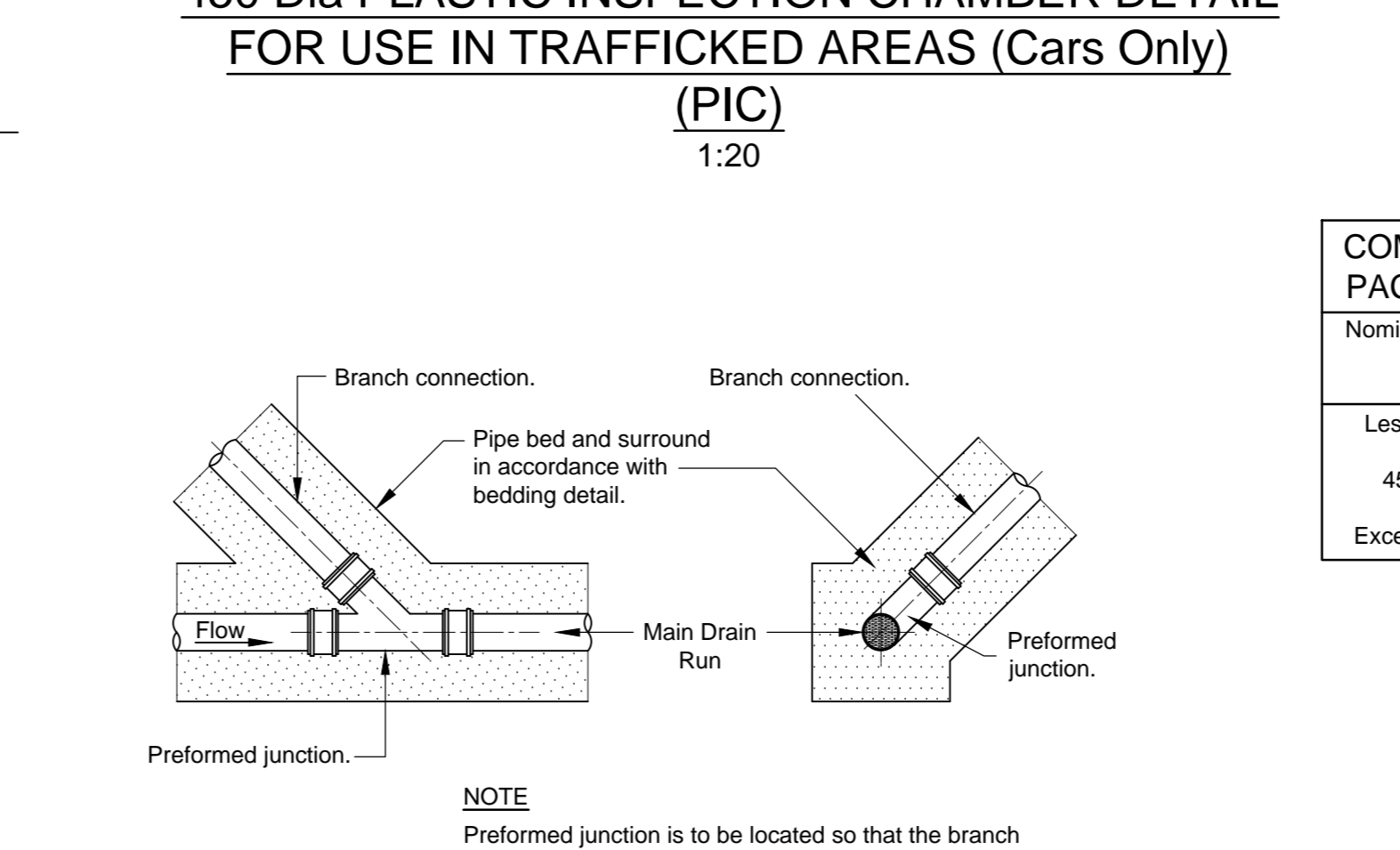
NO.	DESCRIPTION	DATE
1.	These notes relate solely to information shown on this drawing. Only significant risks which are considered to be unusual or unlikely to be obvious to a competent contractor or other designer will be highlighted. This information may be subject to revision as the design develops.	



PIPE BEDDING DETAILS CONCRETE, CLAY & PVCu PIPES



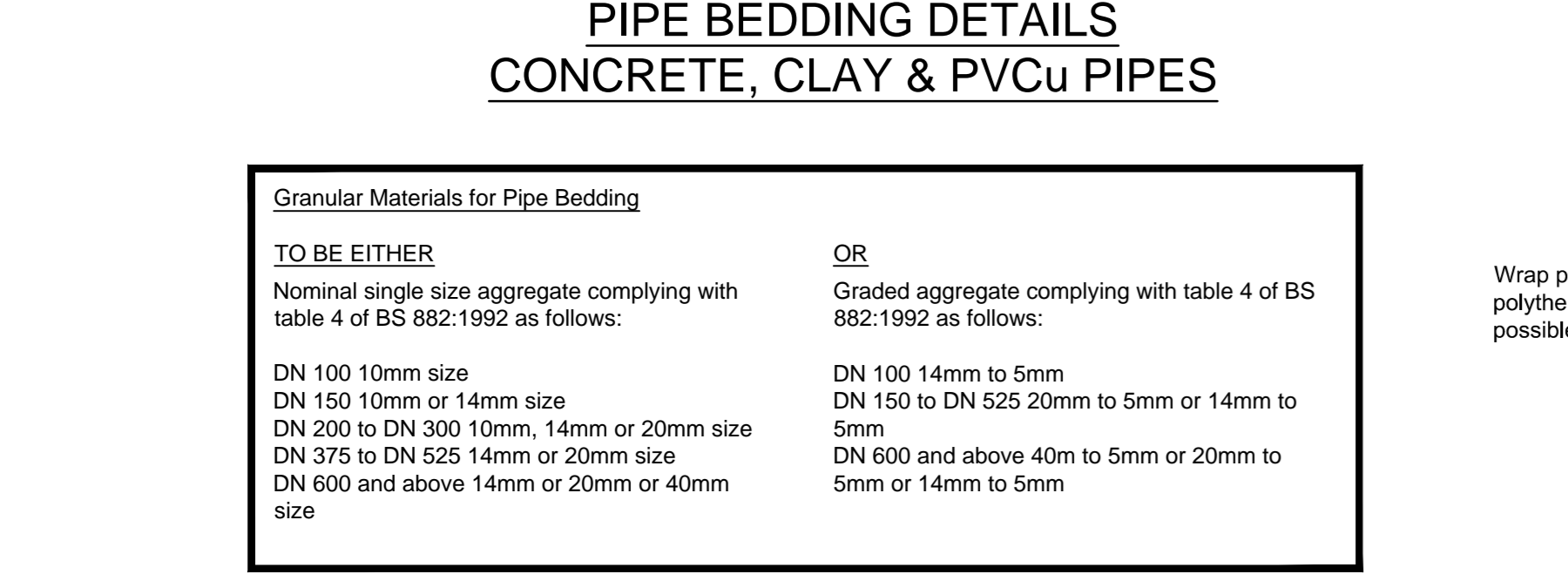
CONCRETING OF DRAINS LAID NEAR FOUNDATIONS
1:20



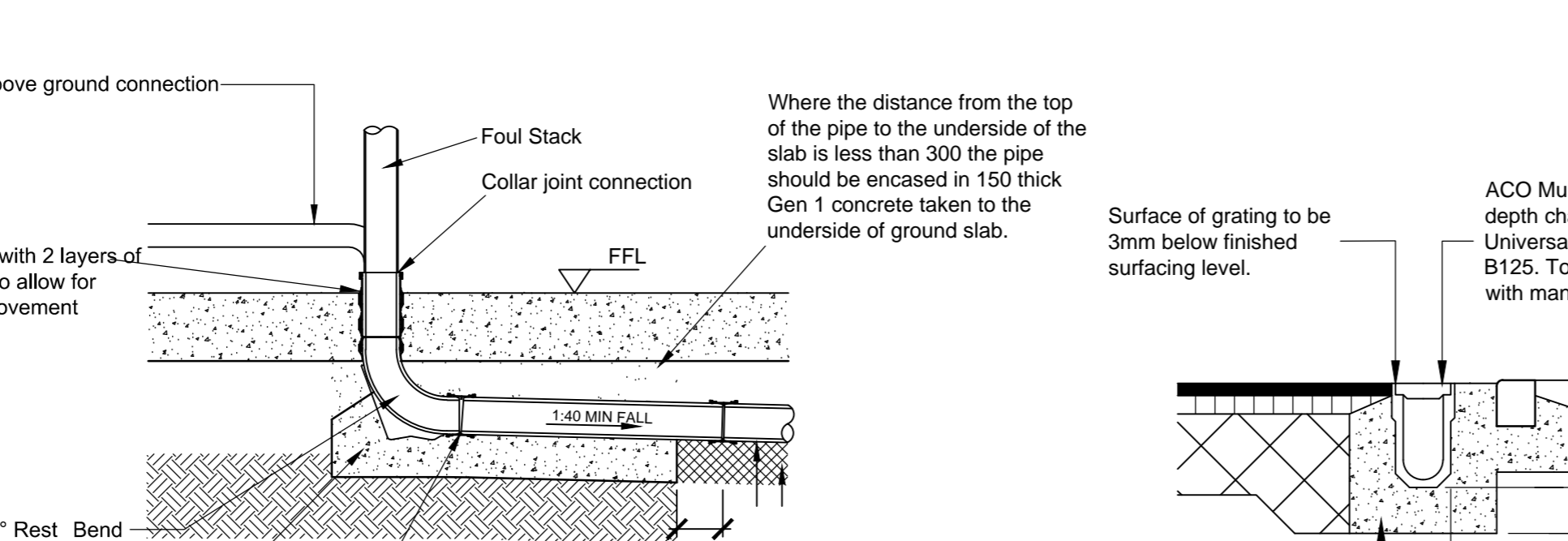
PREFORMED JUNCTION DETAIL
1:20

EXPANSION JOINT DETAIL TO PIPE CONCRETE BED & SURROUND
1:20

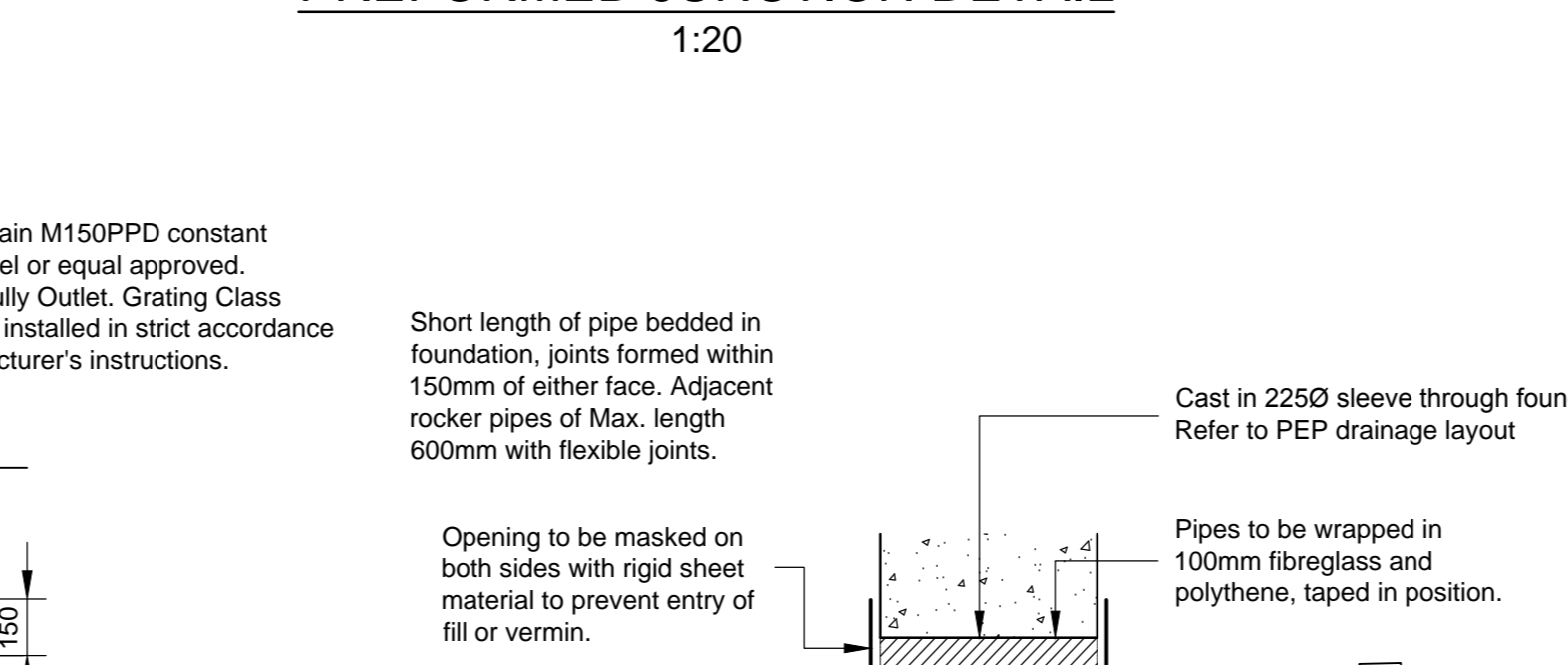
MINI-ACCESS CHAMBER DETAIL (SIC)
1:20



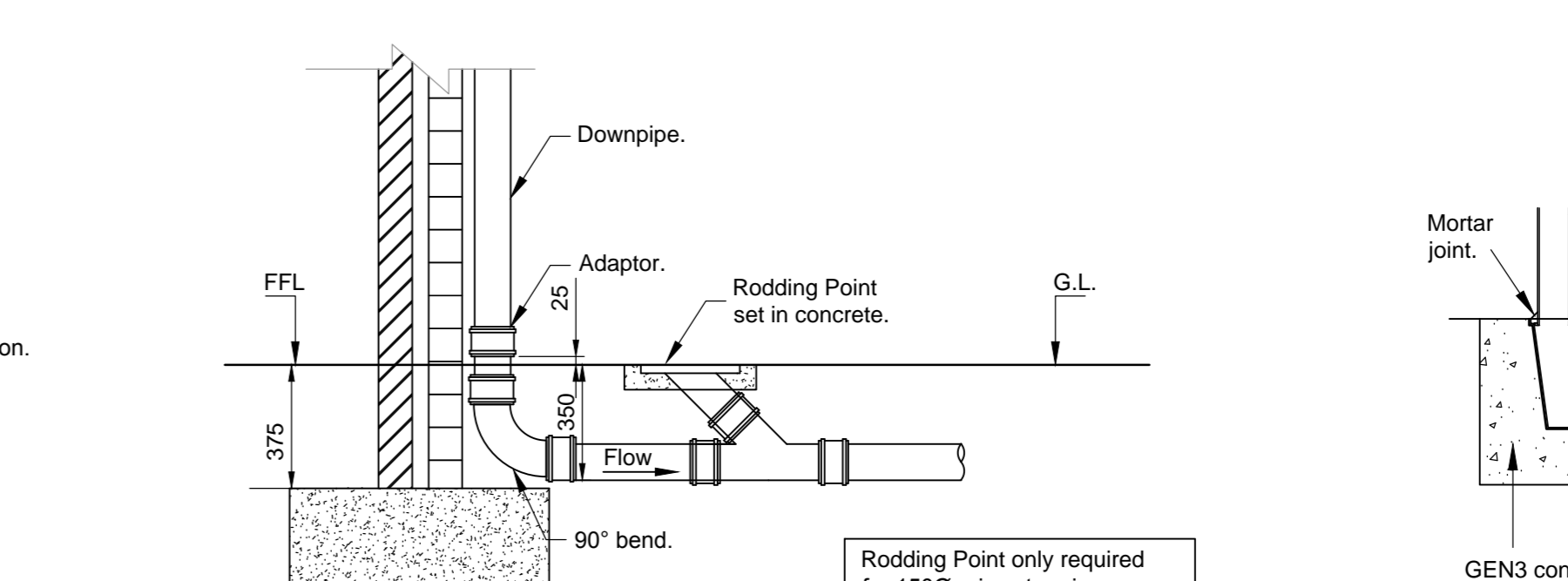
PIPE BEDDING DETAILS UNDER 600mm LANDSCAPED
1:20



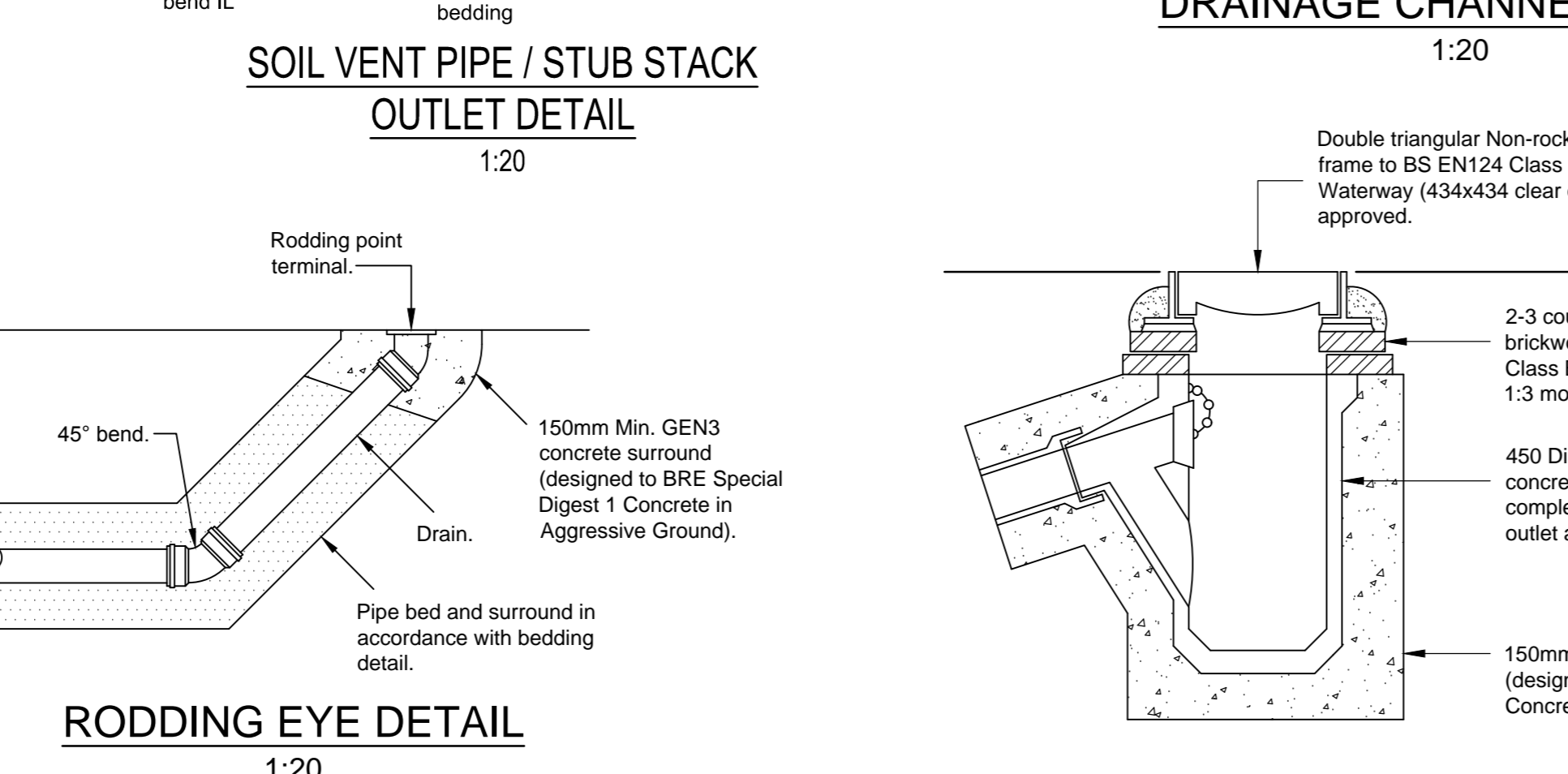
SOIL VENT PIPE / STUB STACK OUTLET DETAIL
1:20



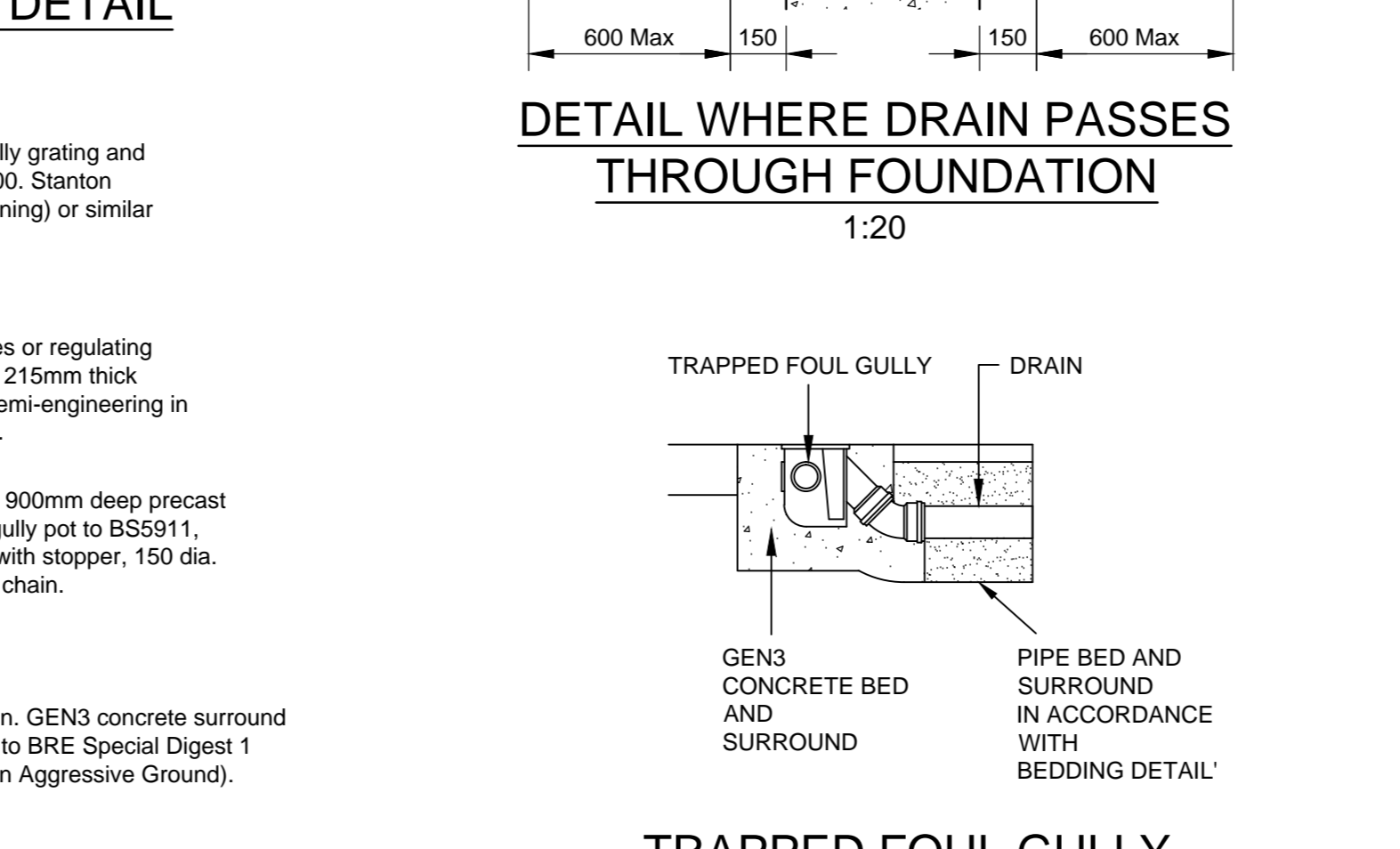
DETAIL WHERE DRAIN PASSES THROUGH FOUNDATION
1:20



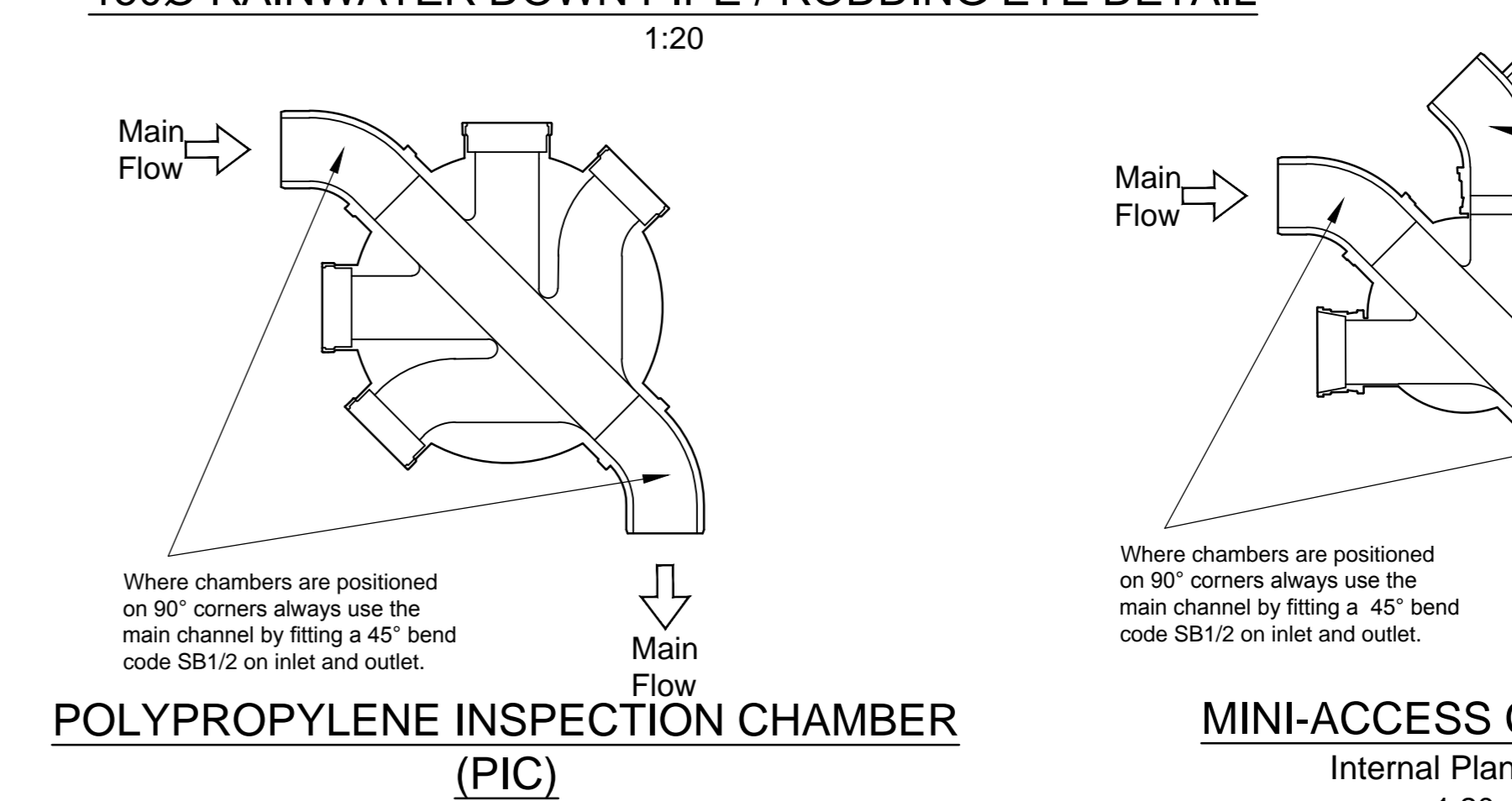
ACCESS GULLY
1:20



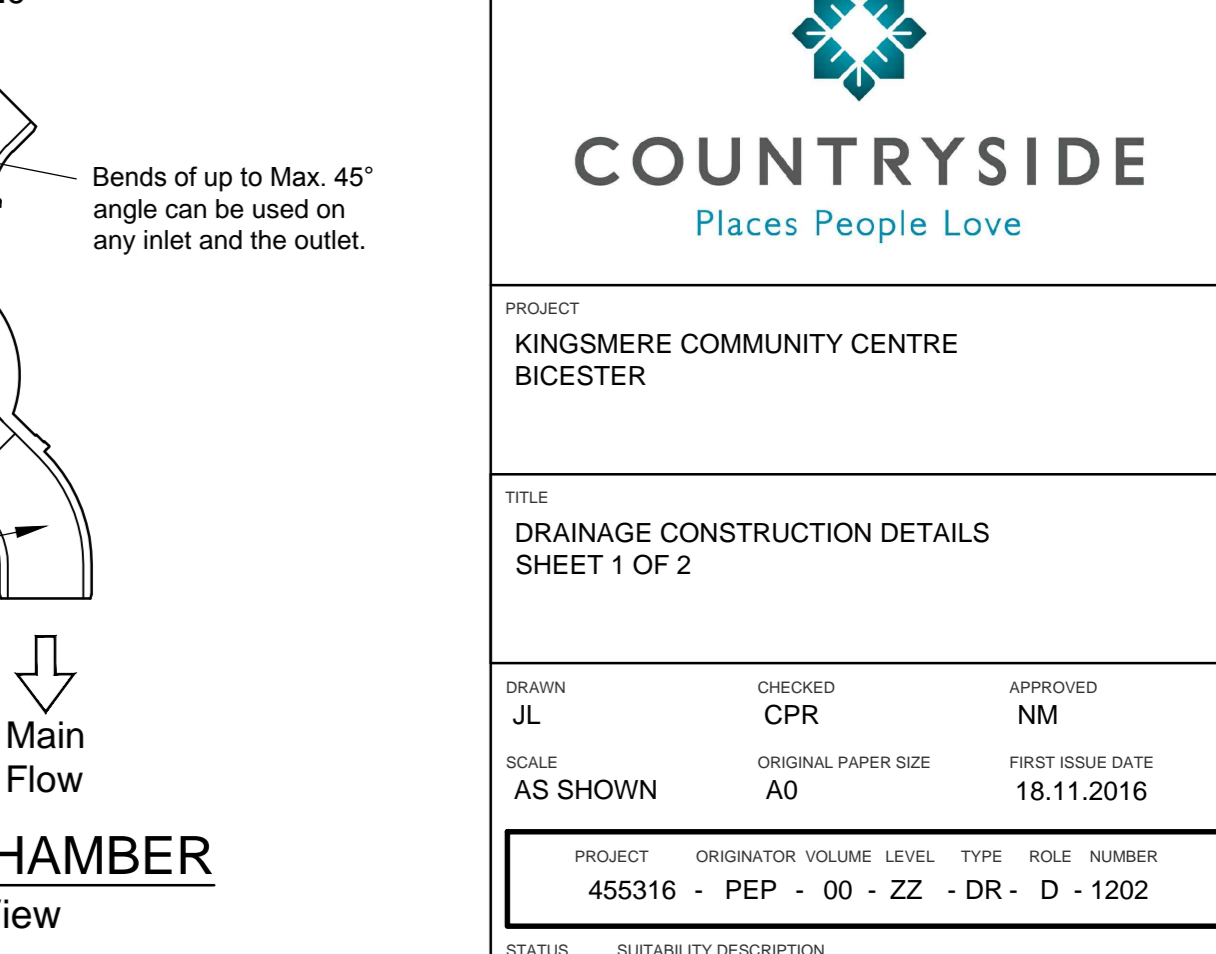
DRAINAGE CHANNEL DETAIL
1:20



TRAPPED FOUL GULLY
1:20



POLYPROPYLENE INSPECTION CHAMBER (PIC)
Internal Plan View
1:20



MINI-ACCESS CHAMBER
Internal Plan View
1:20

PEP Civil & Structures Ltd
PEP House, Stoney Lane, Bourne End, Hemel Hempstead, Herts, HP1 2SB
01462 869400 www.pepgrp.co.uk design@pepgrp.co.uk

COUNTRYSIDE
Places People Love

PROJECT: KINGSMERE COMMUNITY CENTRE BICESTER
TITLE: DRAINAGE CONSTRUCTION DETAILS SHEET 1 OF 2

NO.	DATE	DESCRIPTION	DATE
003	18.11.2016	Brick built manhole added	08.12.16
004	28.11.16	450 Dia Inspection Chamber details relocated, Type E Manhole removed.	28.11.16
AMENDMENTS		DATE	

DRAWN: J.L. CHECKED: C.P.R. APPROVED: N.M.
SCALE: AS SHOWN ORIGINAL PAPER SIZE: A0 FIRST ISSUE DATE: 18.11.2016

PROJECT	ORIGINATOR	VOLUME	TYPE	ROLE	NUMBER
455316	PEP	00	DR	D	1202

STATUS: D1 SUITABLE FOR COSTING
PEP PROJECT REF: 455316

© PEP Civil & Structures Ltd. This drawing is copyright and must not be reproduced wholly or in part without prior permission.