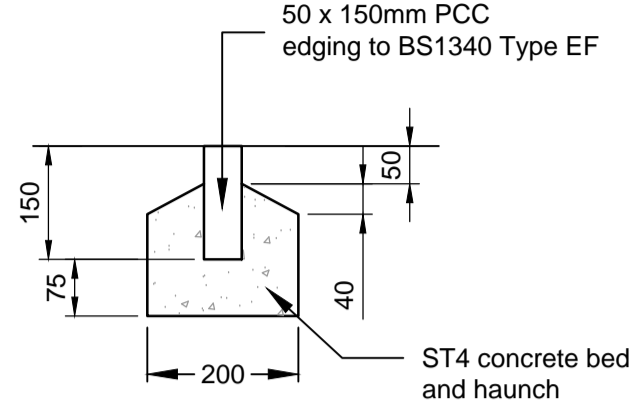
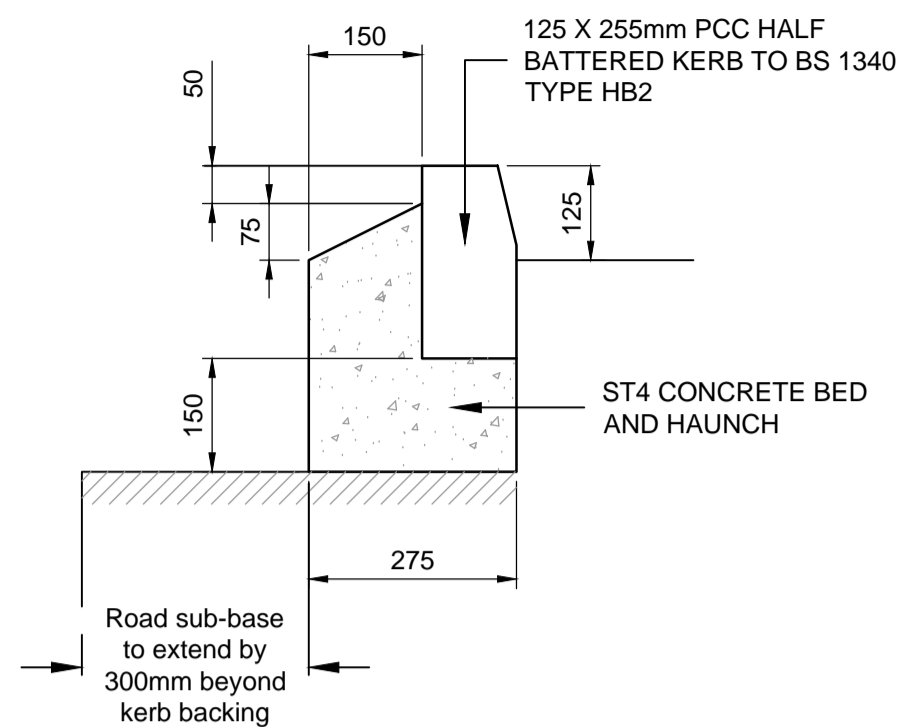


Bull Nosed Kerb Detail
1:10

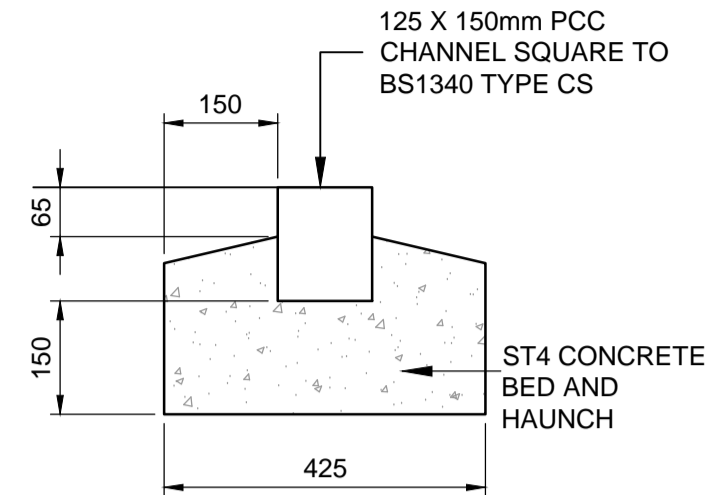


Precast Concrete Footpath Edging Detail
1:10

(KERBS TO BE CONSERVATION FINISH AS PER LANDSCAPE ARCHITECT SPECIFICATION)



Half Battered Kerb Detail
1:10



Channel Square Kerb Detail
(1:10)

CDM REGULATIONS 2015: DESIGNERS NOTES ON SIGNIFICANT RESIDUAL RISKS

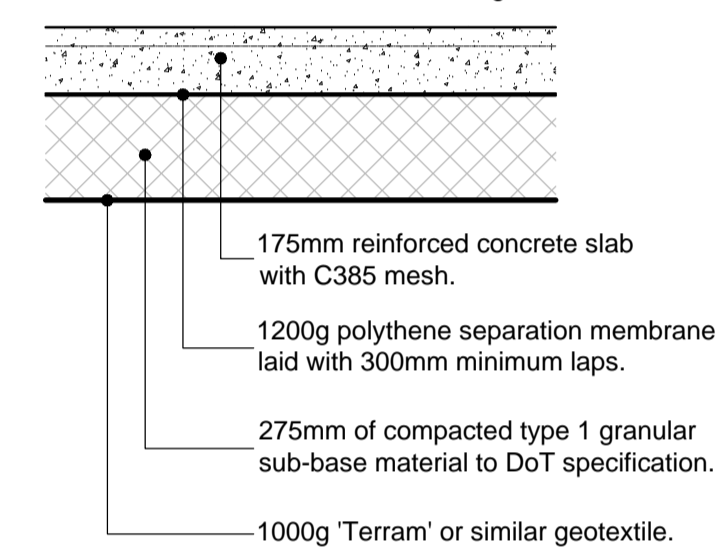
1.

THESE NOTES RELATE SOLELY TO INFORMATION SHOWN ON THIS DRAWING. ONLY SIGNIFICANT RISKS WHICH ARE CONSIDERED TO BE UNUSUAL, OR UNLIKELY TO BE OBVIOUS TO A COMPETENT CONTRACTOR OR OTHER DESIGNER WILL BE HIGHLIGHTED. THIS INFORMATION MAY BE SUBJECT TO REVISION AS THE DESIGN DEVELOPS.

- GENERAL NOTES**
- THIS DRAWING IS TO BE READ IN CONJUNCTION WITH ALL RELEVANT DETAILS, DRAWINGS, SPECIFICATIONS, REPORTS AND OTHER DOCUMENTS ISSUED BY THE ARCHITECT AND OTHER DESIGN TEAM MEMBERS.
 - REPORT ANY DISCREPANCIES IMMEDIATELY AND AWAIT FURTHER INSTRUCTIONS BEFORE PROCEEDING WITH ANY ASSOCIATED CONSTRUCTION WORKS. IF A DETAIL APPEARS UNCLEAR, OR THERE IS ANY DOUBT, THEN CONTACT PEP FOR FURTHER ADVICE.
 - CONTRACTORS ARE NOT TO WORK TO THIS DRAWING UNLESS IT IS AT 'FOR CONSTRUCTION' STATUS, AS THE DESIGN MAY NOT HAVE BEEN FINALISED.
 - DO NOT SCALE FROM THIS DRAWING. WORK TO GIVEN DIMENSIONS ONLY.

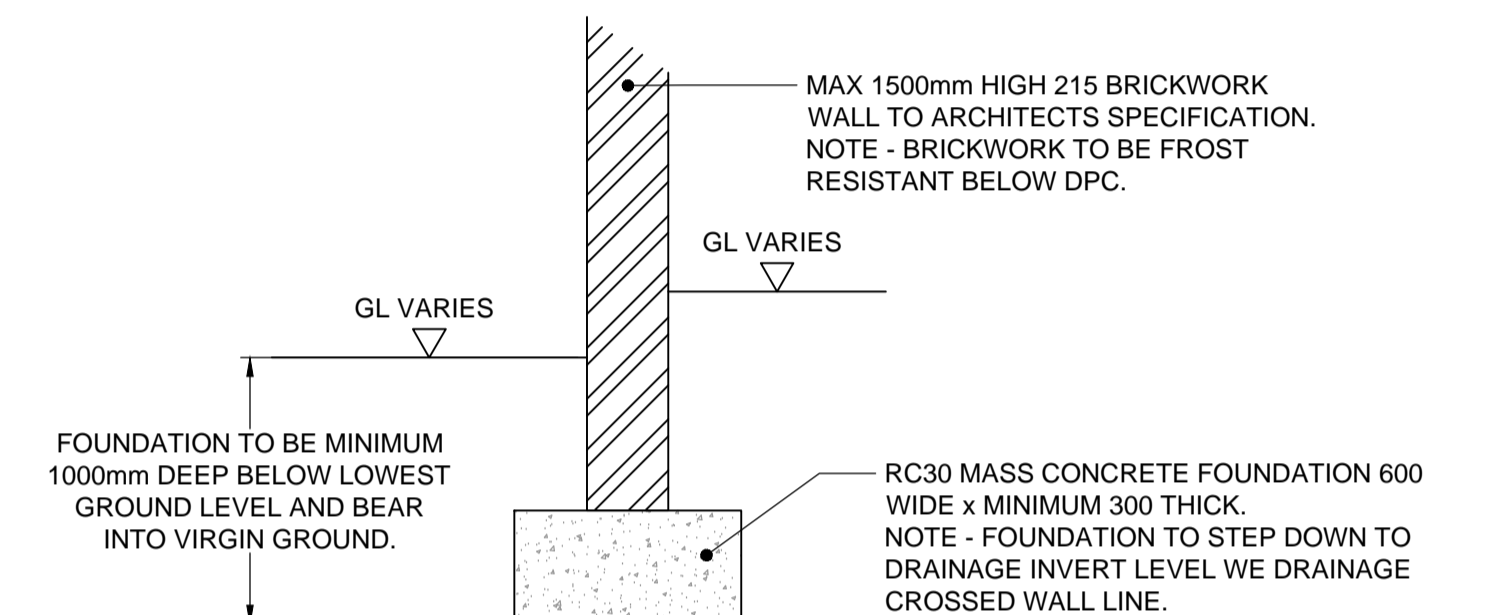
NOTES:

- Concrete to be RC50XF with C385 Mesh. Maximum bay length = 12m. Min cover to mesh = 40mm.
- Immediately after concrete has been placed and finished the surface is to be sprayed with a curing membrane 'Armocure 90' by Armorex or similar.
- Concrete to have brush finish with 100mm trowelled margins.



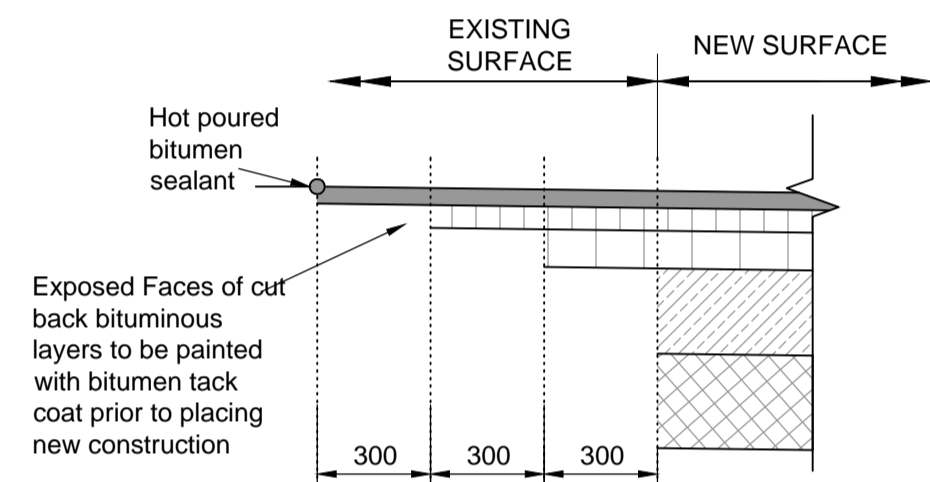
Concrete Service Yard Construction

csy
(1:20)

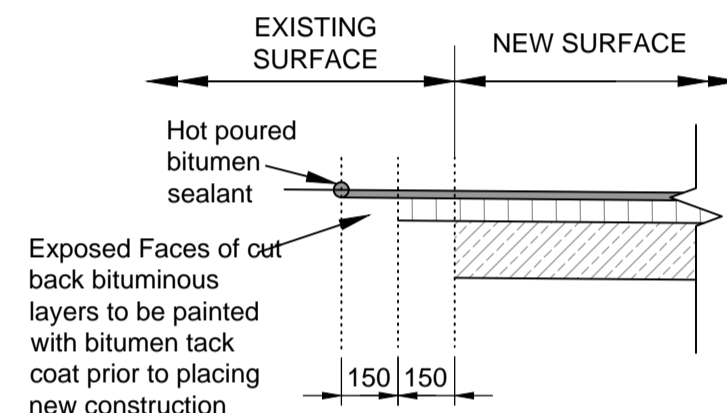


Freestanding Boundary Wall

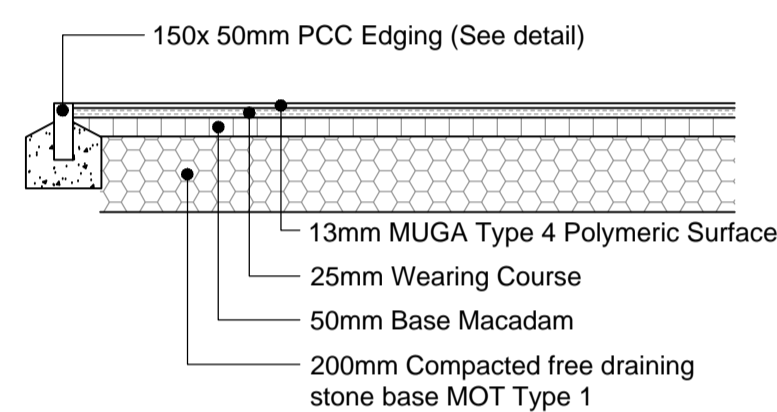
(1:20)



Carriageway Tie In Detail:
1:20



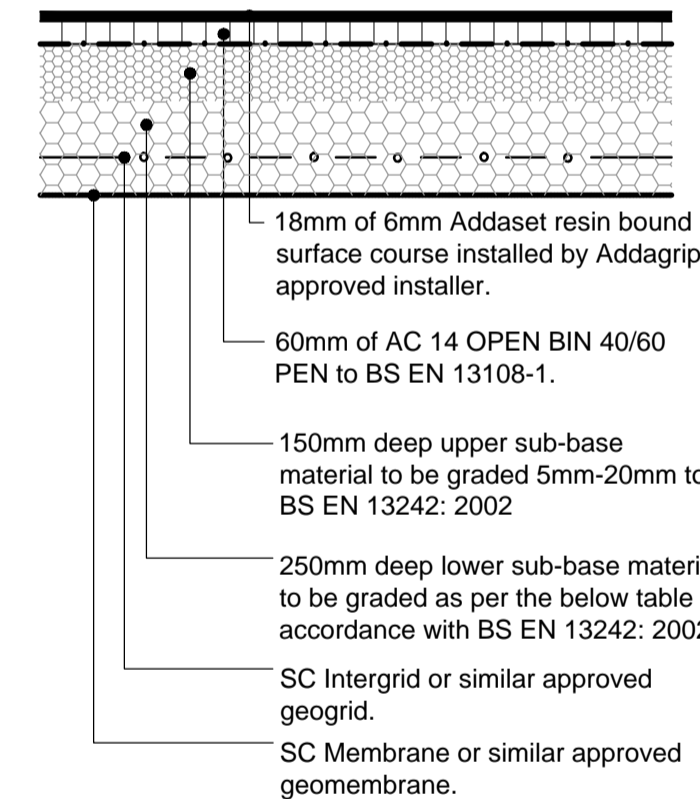
Footpath Tie In Detail
1:20



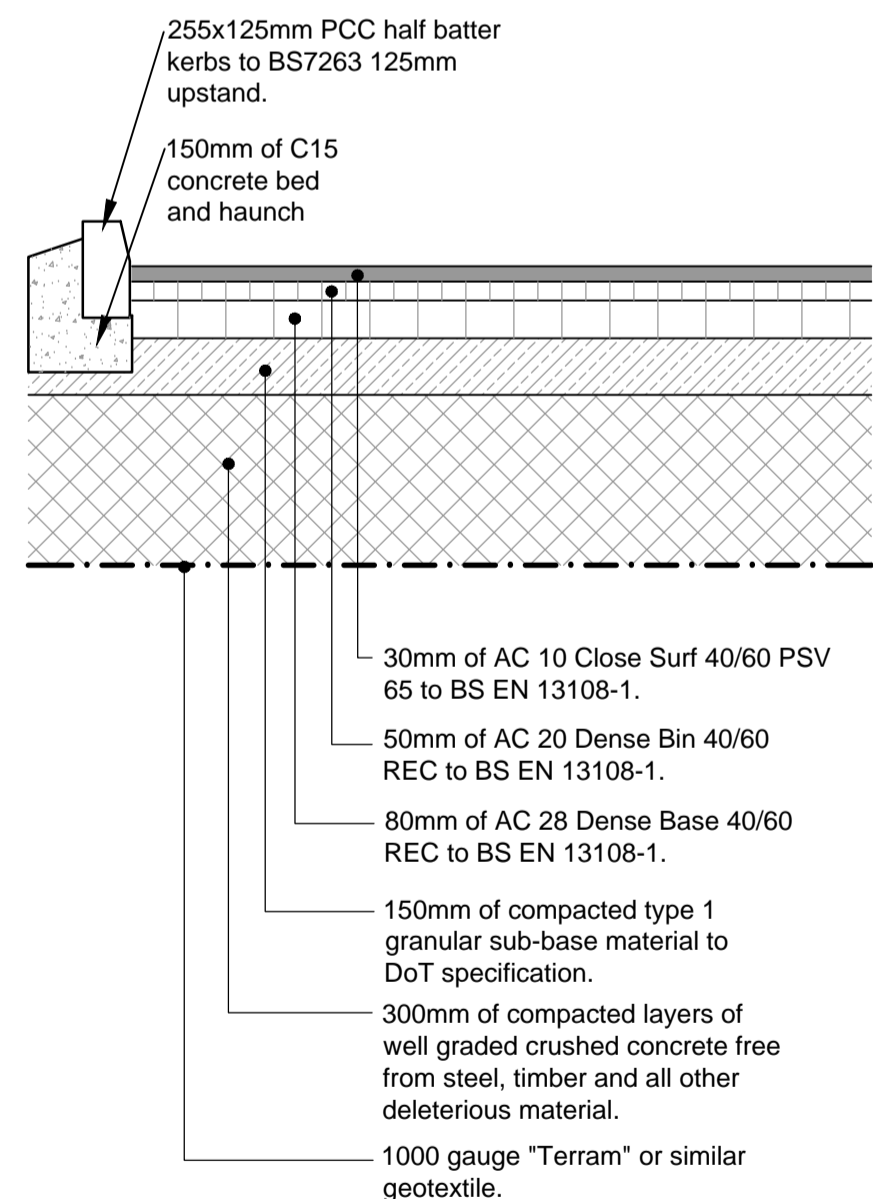
MUGA Type 4 Polymeric Surfing (By Specialist)
(*pss*)

(Detail is typical and may be subject to change depending on surfacing manufacturer chosen)

* Proposed detail based on Addagrip guidance.



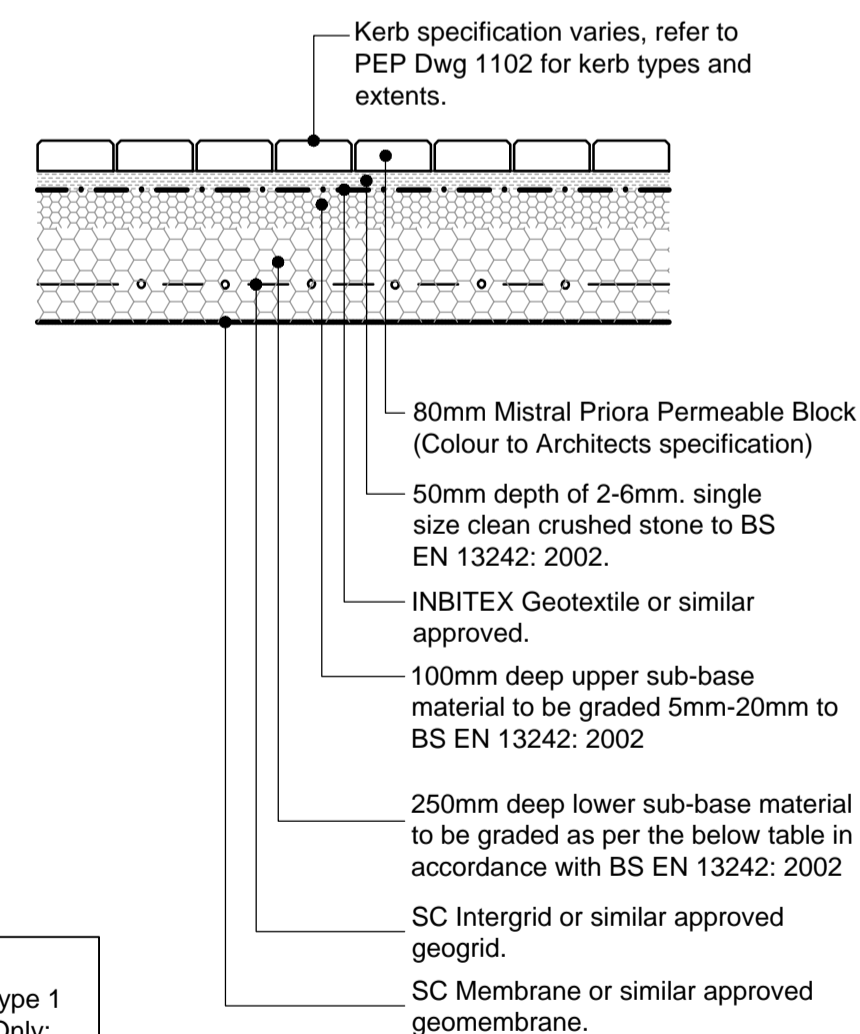
Porous Resin Bound Gravel Construction
(*rbg*)



Flexible Carriageway Construction
(*fcc*)
(1:20)

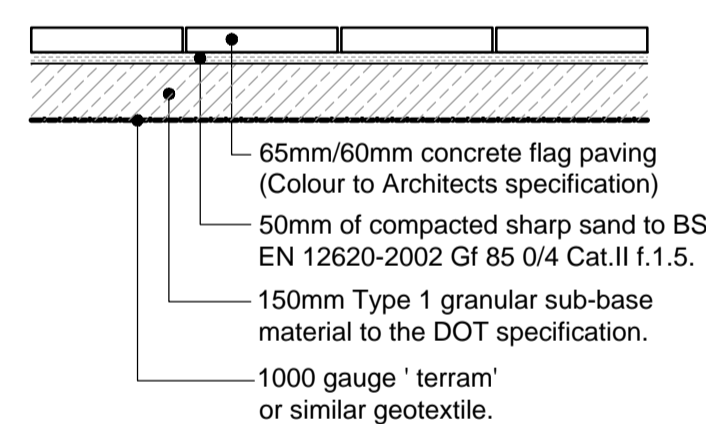
* In-situ testing is required. Subject to results, the design CBR of 4% should be amended to suit the adjacent table.

CBR (%)	Capping with 150mm Type 1:	Type 1 Only:
≤2	600	N/A
2	450	N/A
3	360	320
4	300	270
5	250	230



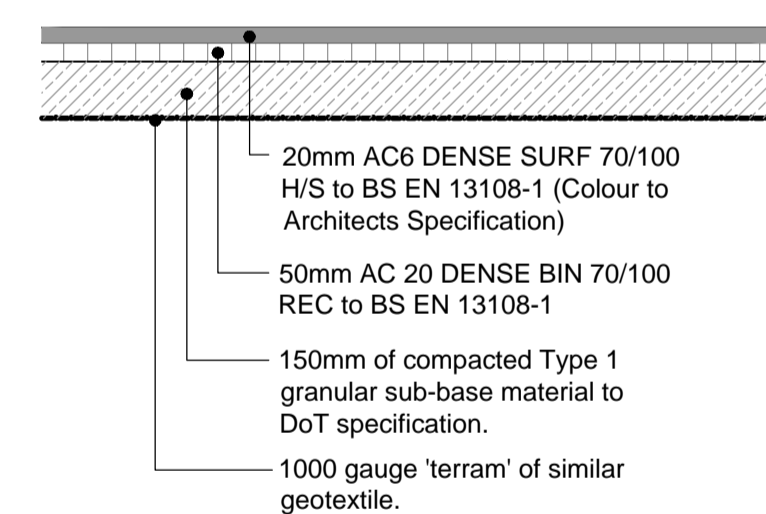
Porous Blockwork Footway Construction
(*pbc*)

BS EN Sieve size	% passing:
80mm	100
63mm	90-100
40mm	60-80
20mm	15-30
10mm	0-5

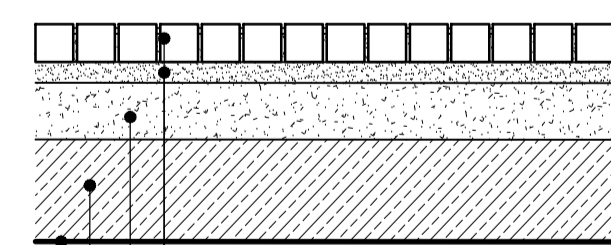


Concrete Flag Construction
(*cfc*)

(* Based on BS 7533-2 Guidance: CAT IV footway)

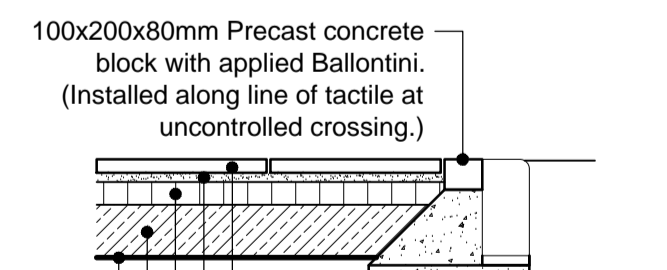


Flexible Footpath Construction
(*ffc*)



Concrete Setts Construction
(*csc*)

(Detail is typical for pricing. Works to crossovers are subject to S38 and to be agreed with Highway Authority as part of S38 by Client Highway Engineer)



Concrete Flag Tactile Construction

REV	BY	CHK	CPR	DESCRIPTION	DATE
P03	JL		CPR	MUGA SURFACING DETAIL AND RET WALL DETAIL ADDED.	08.12.16
P02	JL		CPR	POROUS RESIN BOUND DETAIL UPDATED	29.11.16
				AMENDMENTS	DATE



PROJECT
KINGSMERE COMMUNITY CENTRE
BICESTER

TITLE
EXTERNAL WORKS CONSTRUCTION
DETAILS

DRAWN	CHECKED	APPROVED
JL	CPR	NM

SCALE	ORIGINAL PAPER SIZE	FIRST ISSUE DATE
AS SHOWN	A1	18/11/2016

PROJECT	ORIGINATOR	VOLUME	LEVEL	TYPE	ROLE	NUMBER
455316	PEP	00	ZZ	DR	D	1103

STATUS
D1 SUITABLE FOR COSTING
REVISION
P03 PRELIMINARY

© PEP Civil & Structures Ltd - This drawing is copyright and must not be reproduced wholly or in part without prior permission.