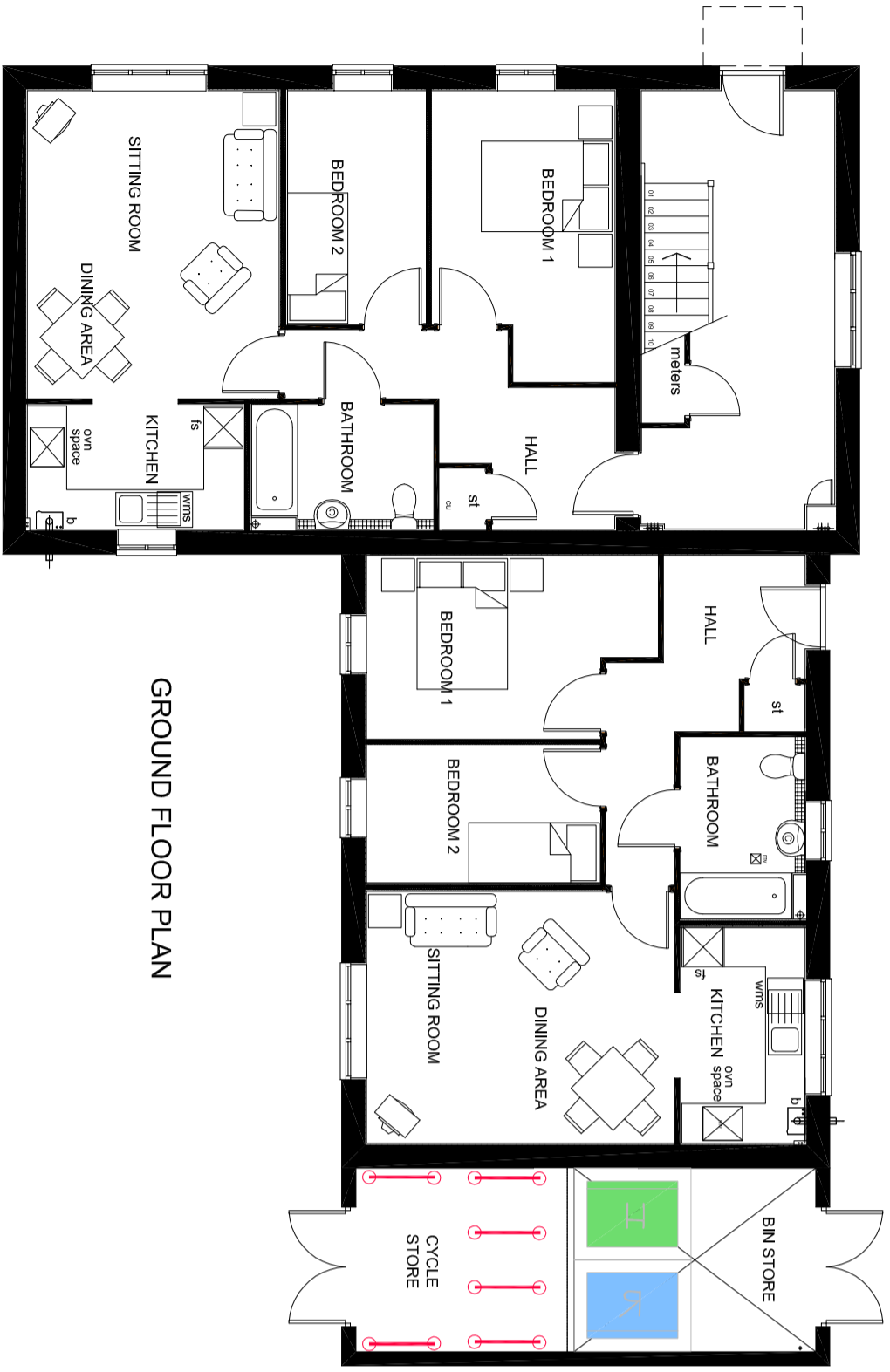
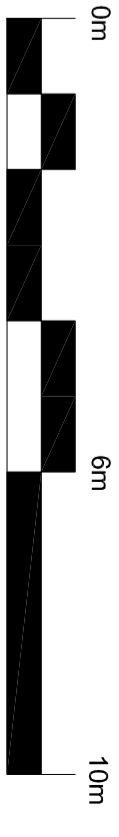
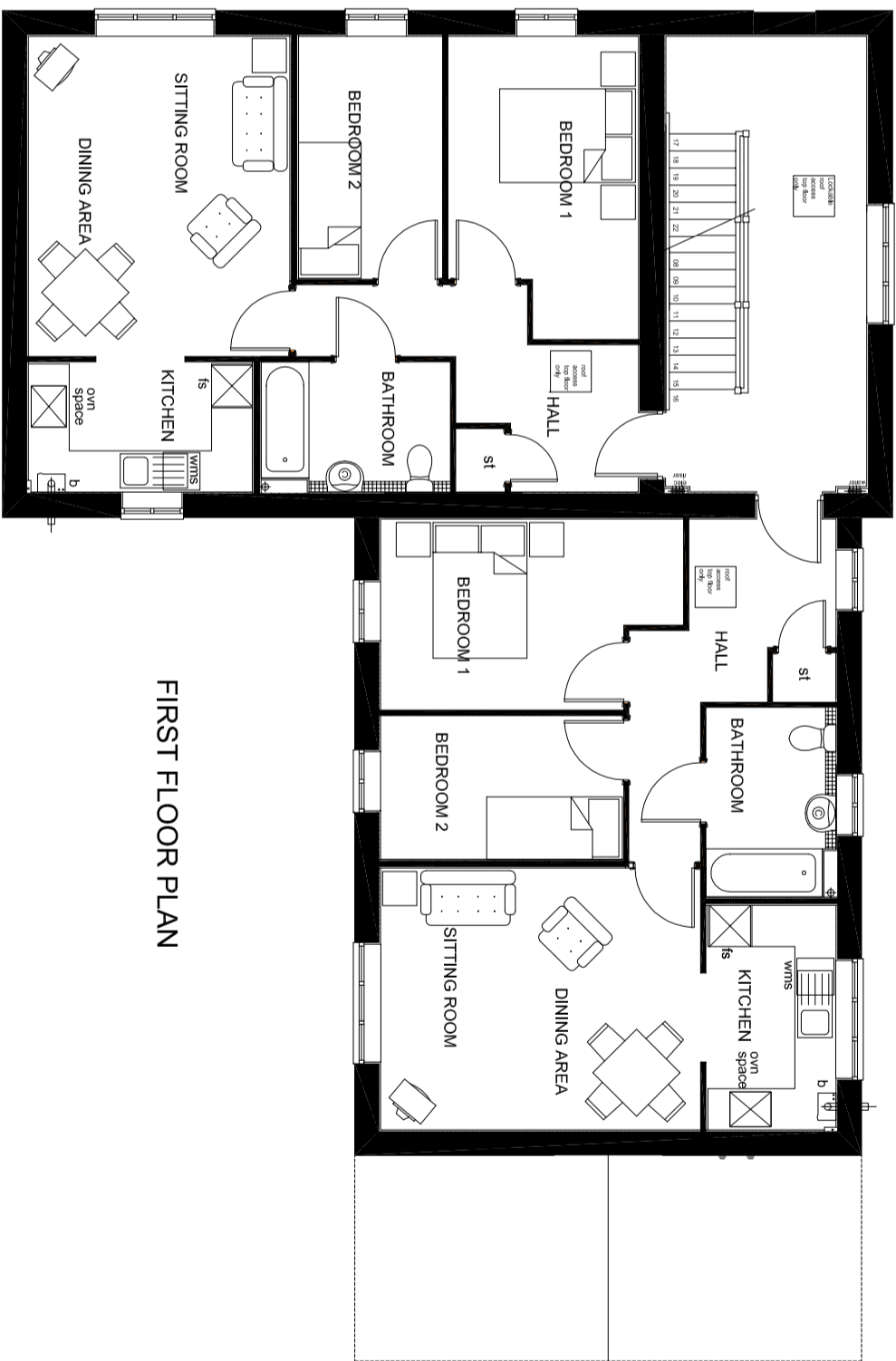


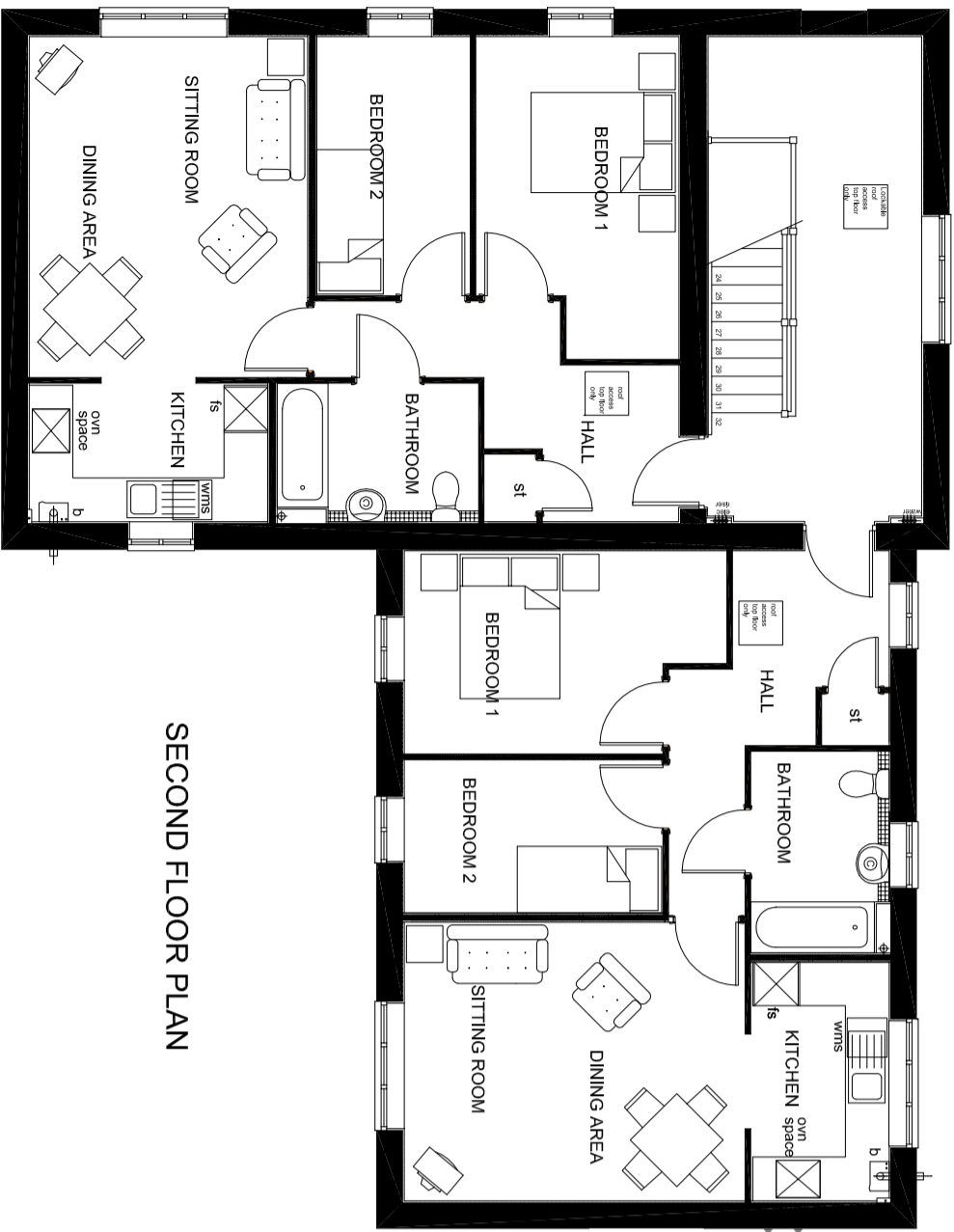
- NOTE:
- Rain water goods to be Black
 - Gas meter boxes to be in ground
 - Electric meter boxes to be finished to match facing material
 - Refer to materials layout for all facing materials
 - Refer to Planning layout for Chimney positions
 - Rear windows and all detailing not shown as elevations are not visible to the street scene.



GROUND FLOOR PLAN



FIRST FLOOR PLAN



SECOND FLOOR PLAN

BOWIS HOMES
 Bowis Homes, West Midlands Region
 Bromwich Court
 Highway Point
 Gorsey Lane
 Colehill
 B46 1DU
 Tel: 01675 437 000
 Fax: 01675 437 094
 DX: 723840 Colehill 2

SITE
BICESTER KME

DRAWING TITLE
S8 APARTMENTS - PLANS

DRAWN BY CW	DATE NOVEMBER 15	DRAWING NO. HTPD_S8_02	REV A
SCALE 1:100@A2	CHECKED/DATE DL		

A	16/04/17	CONNECTED TO THREE STOREY IN HEIGHT 4-APTS	
Rev	Date	Details	By
Drainage Authority Approval Date DRAINAGE APPROVAL Highway Authority Approval Date HIGHWAY APPROVAL <small>Do not cut from this drawing. It is a working document only. Any changes or amendments should be reported to the architect. The architect is not responsible for the accuracy of the information contained in this drawing. The copyright of this drawing is reserved.</small>			