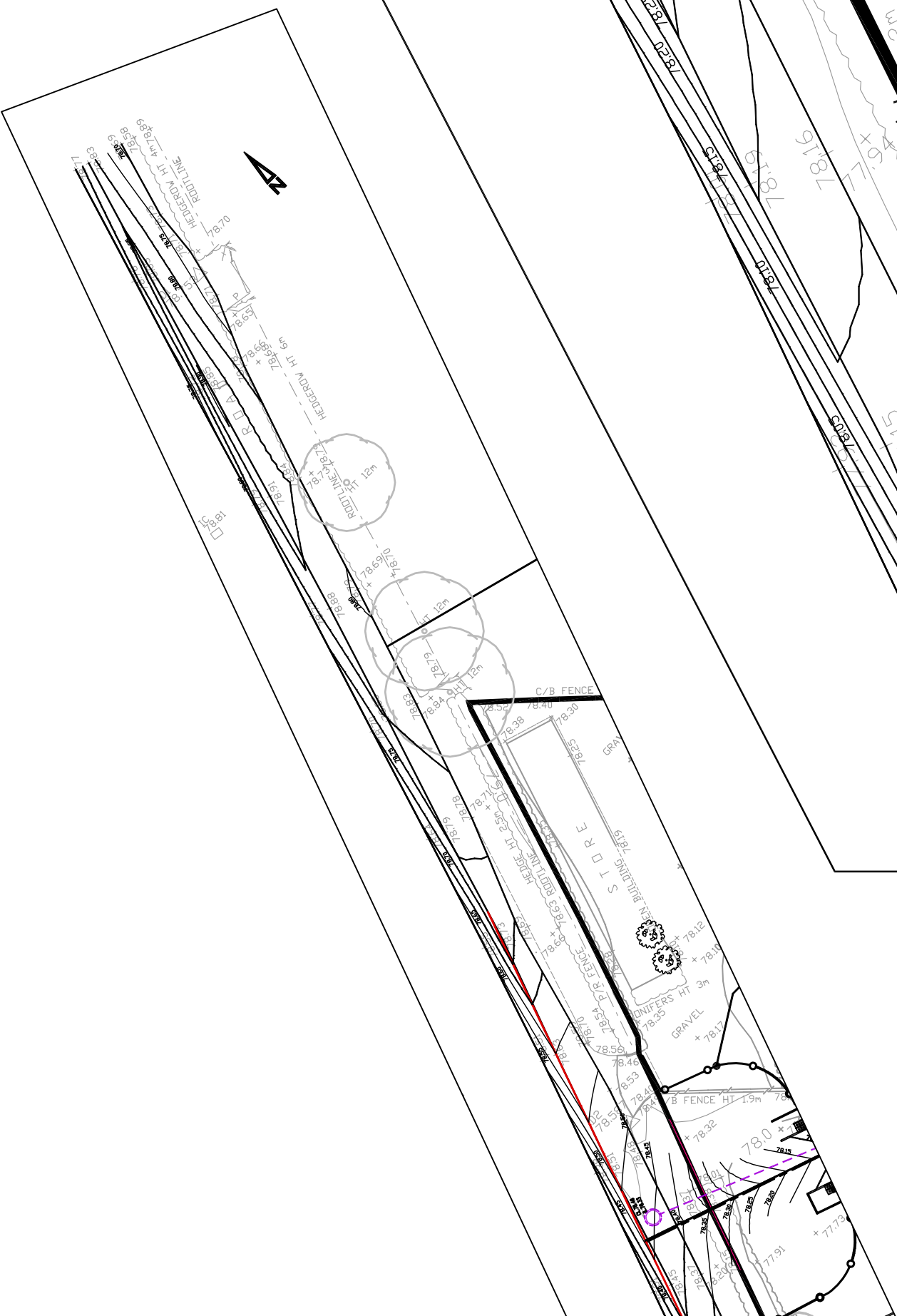
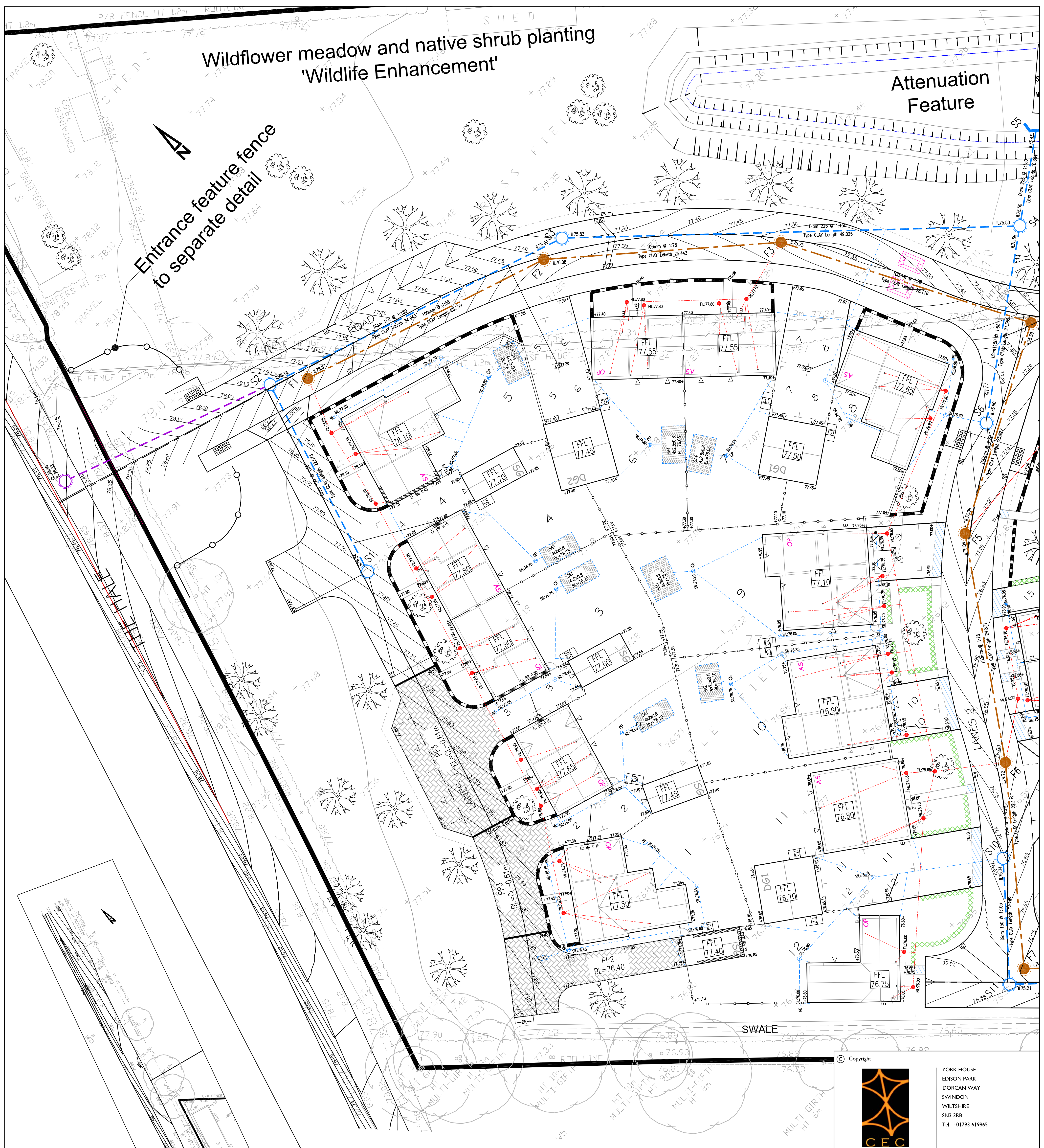


Wildflower meadow and native shrub planting
'Wildlife Enhancement'

Attenuation
Feature

Entrance feature fence
to separate detail



FOR ENGINEERING NOTES
SEE DRAWING 4814/02/02

KEY:			
	ROAD CENTRE LINE		PRIVATE SW DRAIN, INSPECTION CHAMBER & INVERT LEVEL
	ROAD KERBS		PROPOSED HEADWALL
	FOOTWAY EDGING KERB		PRIVATE CATCHPIT
	ROAD CHAINAGE		PROPOSED PERMEABLE PAVING
	PROPOSED ROAD CONTOURS		PROPOSED GRADIENT INDICATOR
	HIGHWAY GULLY & CONNECTION		PROPOSED SPOT LEVELS
	DROPPED KERB CROSSING		FALL ARROWS
	STORM WATER SEWER, MANHOLE & PIPE DETAILS		HIGHWAY GULLY & CONNECTION
	FOUL WATER SEWER, MANHOLE & PIPE DETAILS		PRIVATE SW DRAIN, INSPECTION CHAMBER & INVERT LEVEL
	FINISHED FLOOR LEVELS		PRIVATE SW RODDING EYE
	PROPOSED STEPS		PRIVATE FW DRAIN, INSPECTION CHAMBER & INVERT LEVEL
	EXPOSED BRICKWORK		PRIVATE ACO DRAIN
	PROPOSED TACTILE PAVING		PRIVATE YARD GULLY & CONNECTION

Copyright



YORK HOUSE
EDISON PARK
DORCAN WAY
SWINDON
WILTSHIRE
SN3 3RB
Tel : 01793 619965

Web Site www.ColeEasdon.com
E-mail cec@ColeEasdon.com

Client
Taylor Wimpey Oxfordshire

Job Title
Development at Green Lane
Chesterton
Oxfordshire

Drawing Title
Engineering Layout 1-200

Sheet 1 of 3

FOR COMMENT	FOR PLANNING	FOR TENDER	FOR APPROVAL	FOR CONSTRUCTION	AS BUILT
CONSTRUCTION AT CLIENT / CONTRACTOR RISK					
Designed by: AD	Drawn by: AD	Checked by: RB			
Date: December 2015	Scale: 1:200 @ A1				

Reproduced from Ordnance Survey map with the permission of the Controller of Her Majesty's Stationery Office. Crown copyright reserved. Licence No. AL 85023X Cole Easdon Consultants

Any highway or drainage works constructed prior to issue of Technical Approval is entirely at the risk of the Contractor/Client.

F	RT	23.12.16	Engineering update to new layout	C	AD	22.02.16	Updated to suit TWO comments
E	AD	01.06.16	FW drainage layout revised. Overland flow bund levels revised	B	AD	27.01.16	Updated with full Engineering design + Layout sheets rationalised.
D	DJR	07.03.16	SW Drainage updated, flood flow route added.	A	AD	14.01.16	P2 & P6 garage levels revised, Planning levels added.

Dwg. No.
4814/02/01

Rev.
F