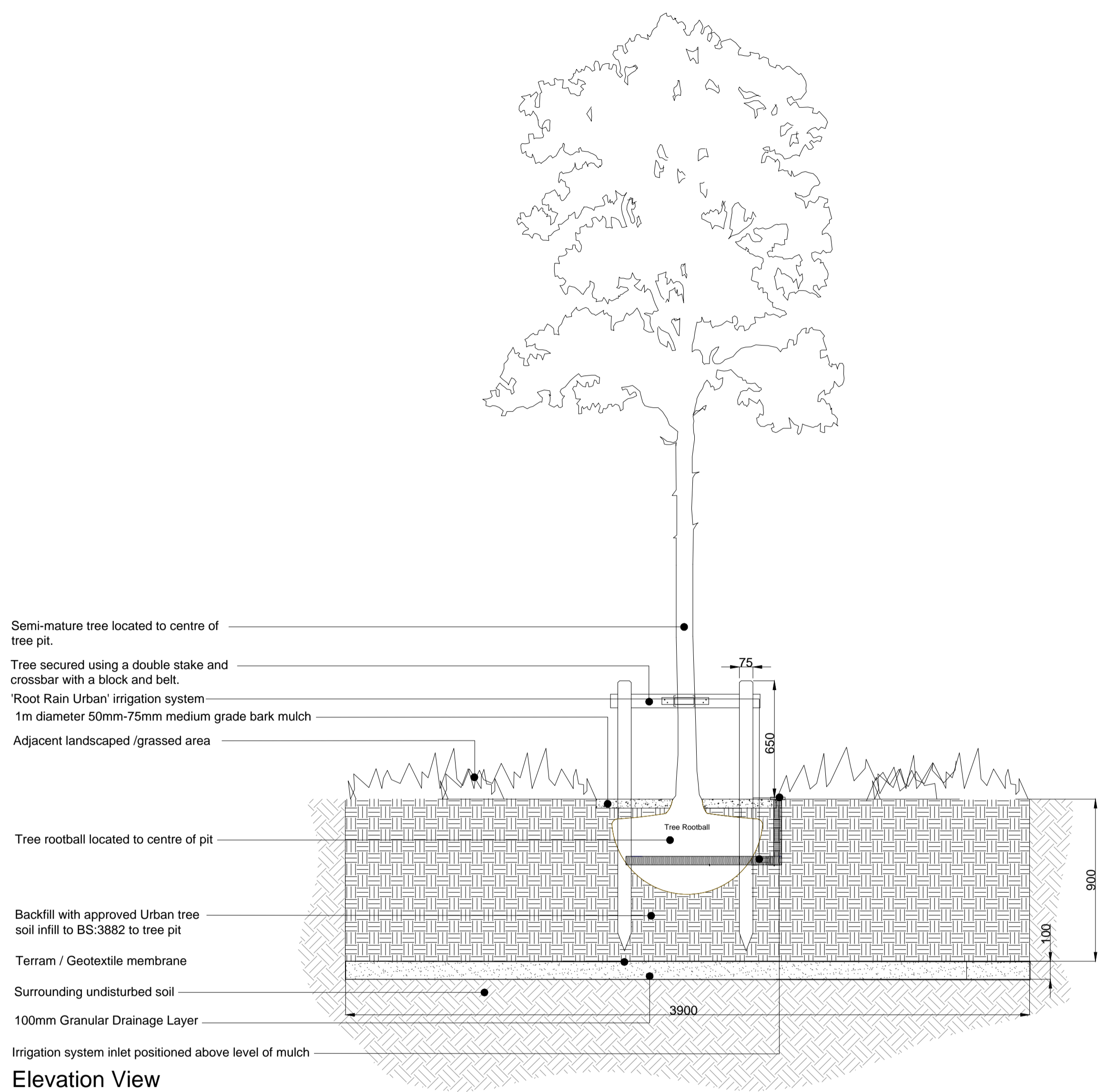


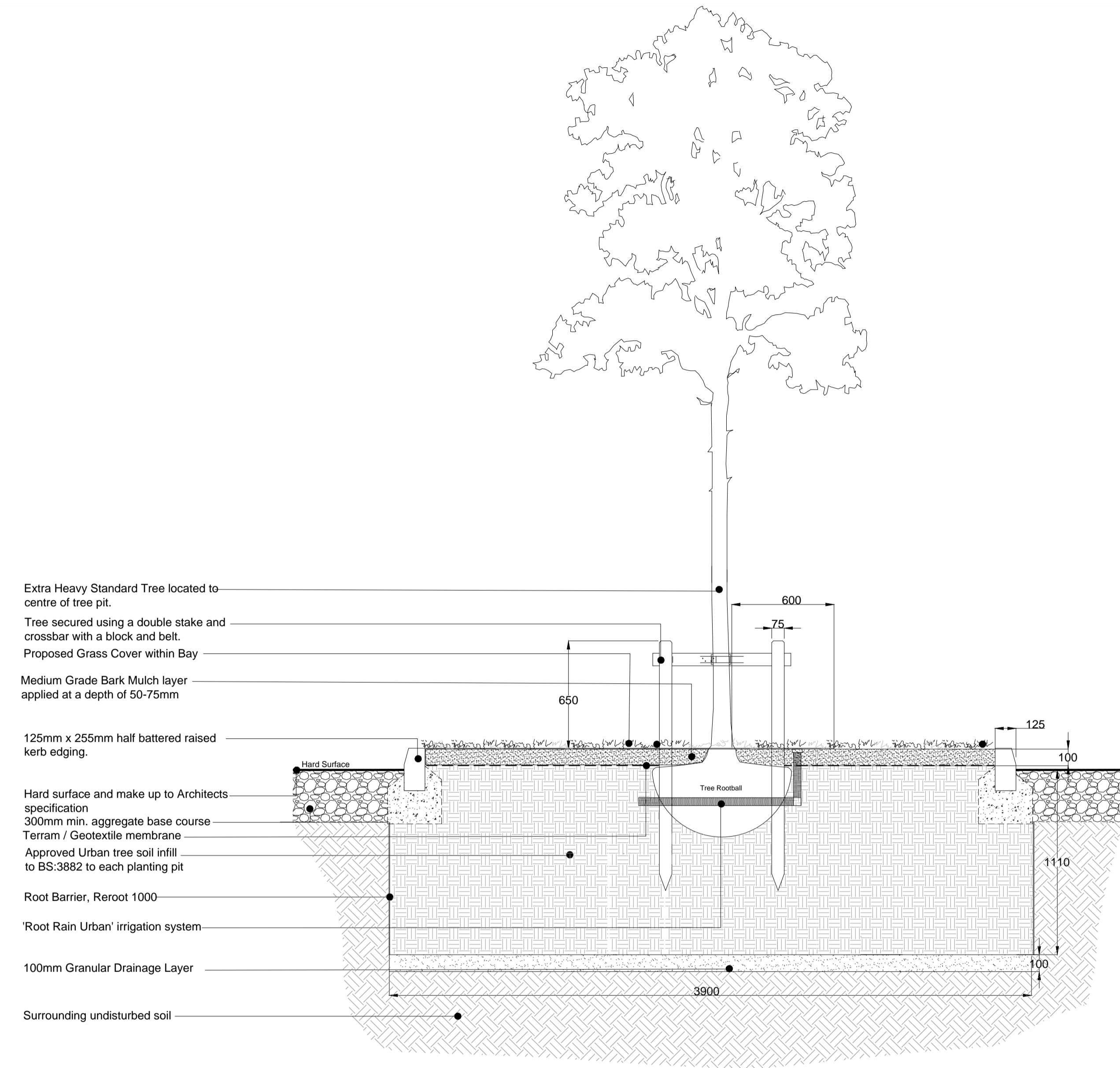
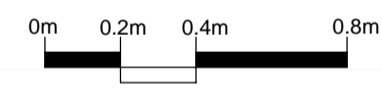
NOTES:  
 Based upon the Ordnance Survey map with permission of The Controller of Her Majesty's Stationery Office. © Crown Copyright.  
 Aspect Landscape Planning Ltd, West Court, Hardwick Business Park, Noral Way, Banbury OX16 2AF.  
 Licence 100045345  
 Copyright reserved

N.B: Plan details vary and are specific to each tree and detail. Total volume of Urban tree soil infill and or uncompacted soil should be a minimum 15m<sup>3</sup>. Tree pits will be finished to approved site levels. Planting operations to be specified to BS8545 (2014).



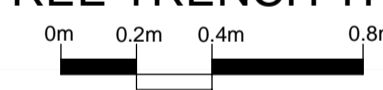
Elevation View  
 Scale 1:20

01 Elevation and Plan View  
 SOFT LANDSCAPE TREE PIT DETAIL 1:20  
 Note: Approximate tree pit minimum volume = 15m<sup>3</sup>

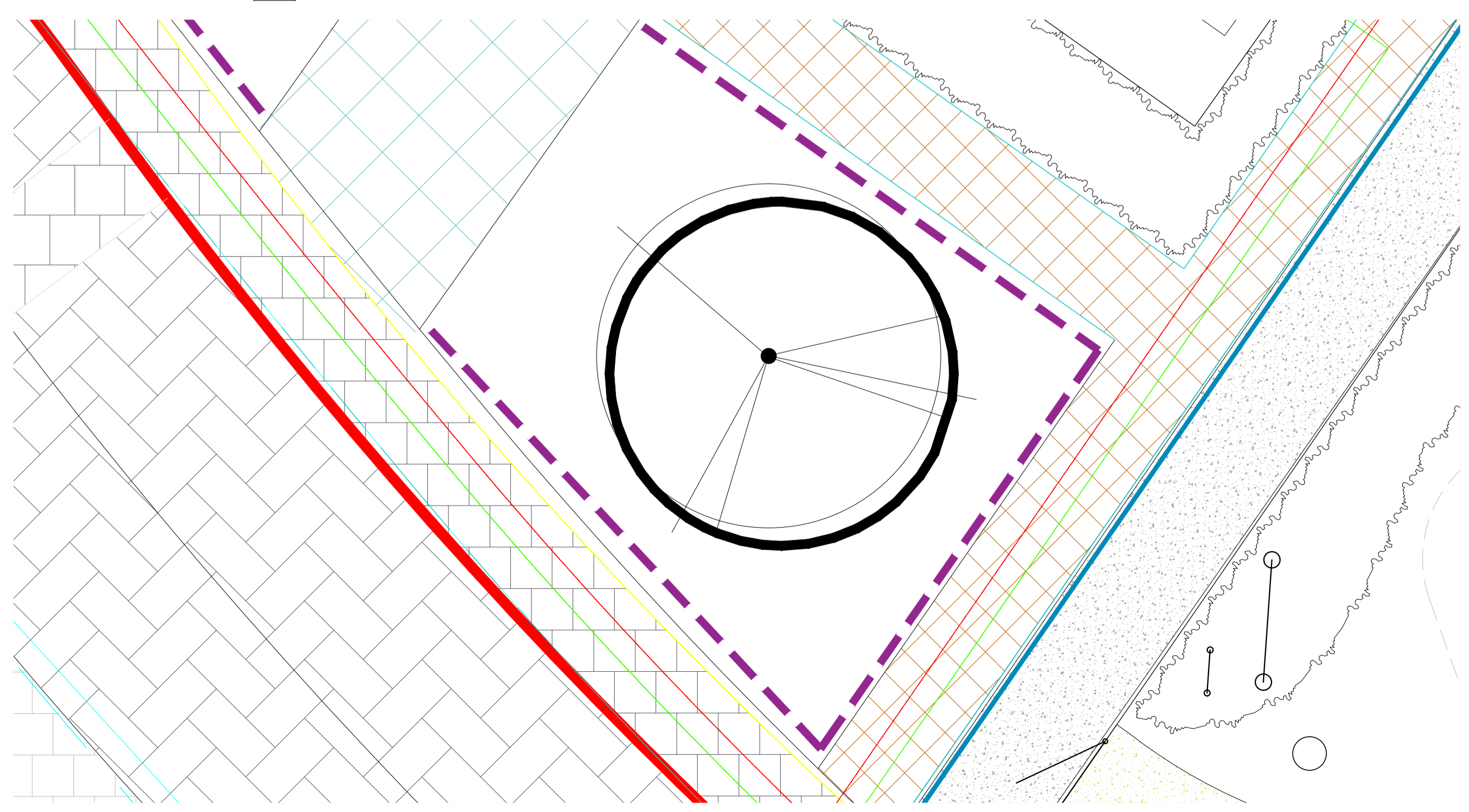
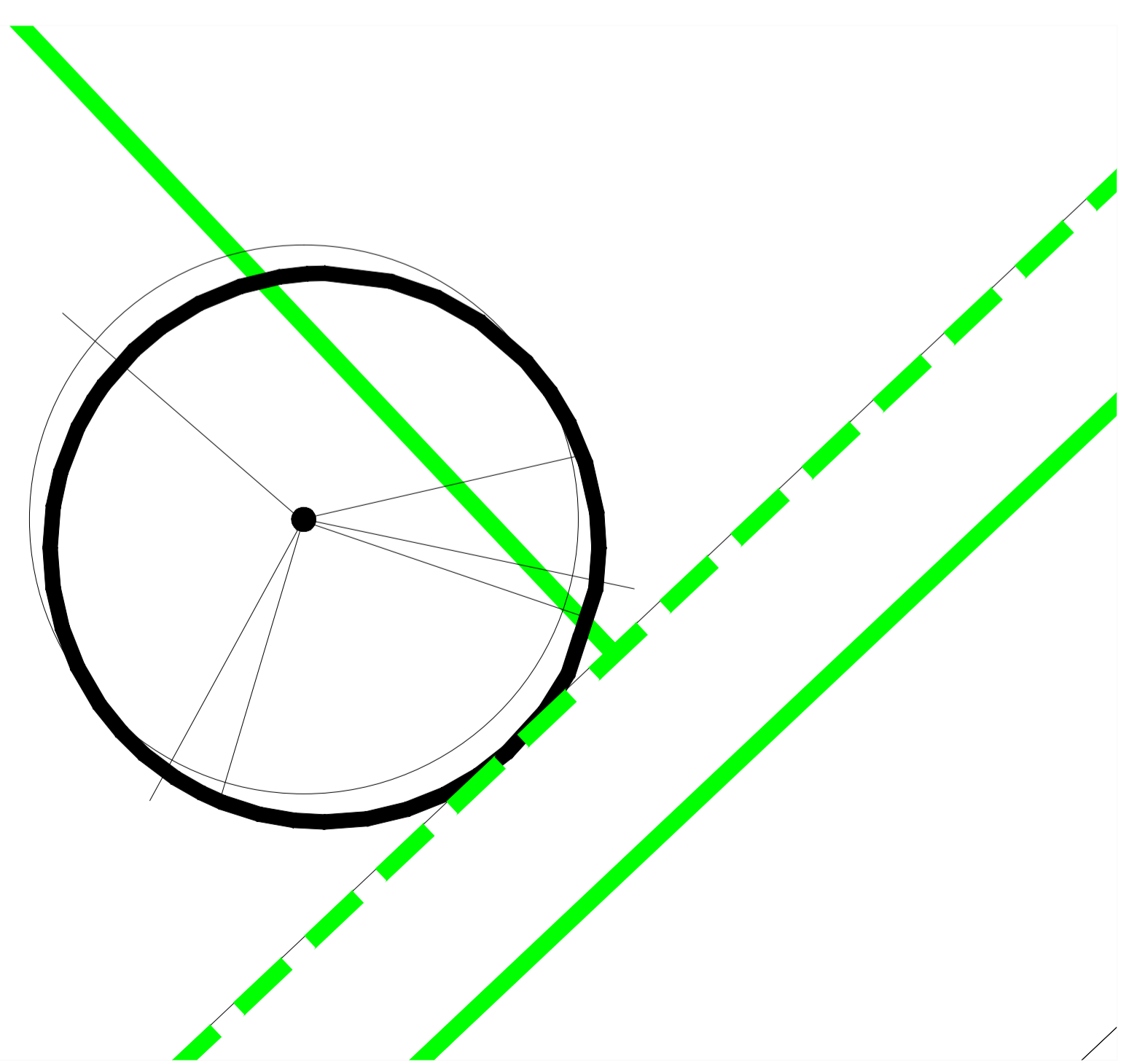


Elevation and Plan View  
 Scale 1:20

02 Elevation and Plan View  
 TREE TRENCH TREE PIT DETAIL 1:20  
 Note: Approximate tree pit minimum volume = 15m<sup>3</sup>



58



REV	DATE	NOTE	Drawn	Chkd
C	19.01.17	Updated to Planning Officer comments	CW	AM
B	22.11.16	Updated to clients comments to show services	CW	AM
A	10.11.16	Updated to planners comments and foundations	CW	AM

REVISIONS

**aspect landscape planning**

TITLE  
 Kingsmere  
 Tree Pit Details

CLIENT  
 Bellway Homes

SCALE	DATE	DRAWN	CHK'D
1:20@A1	AUG 2016	CW	AM

DRAWING NUMBER	REVISION
5797/ ASP7	C