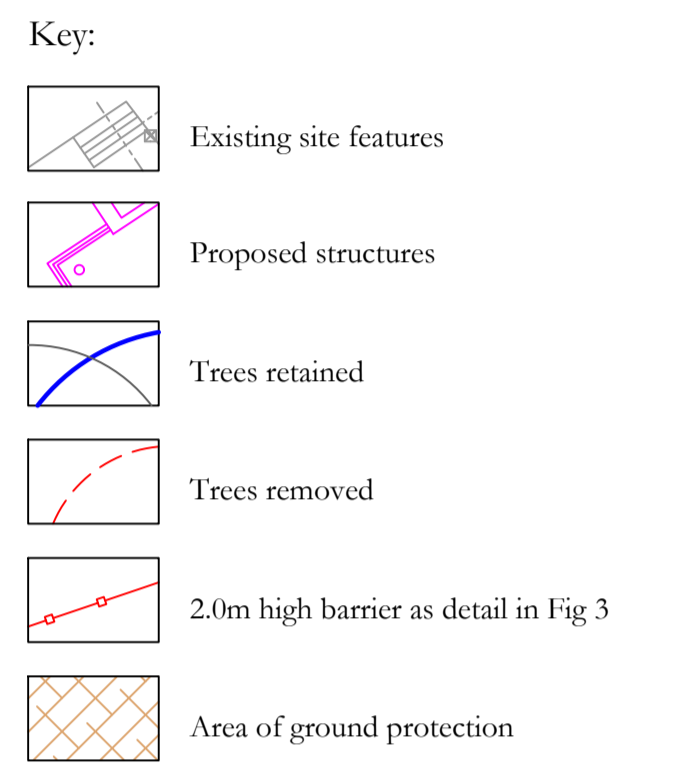
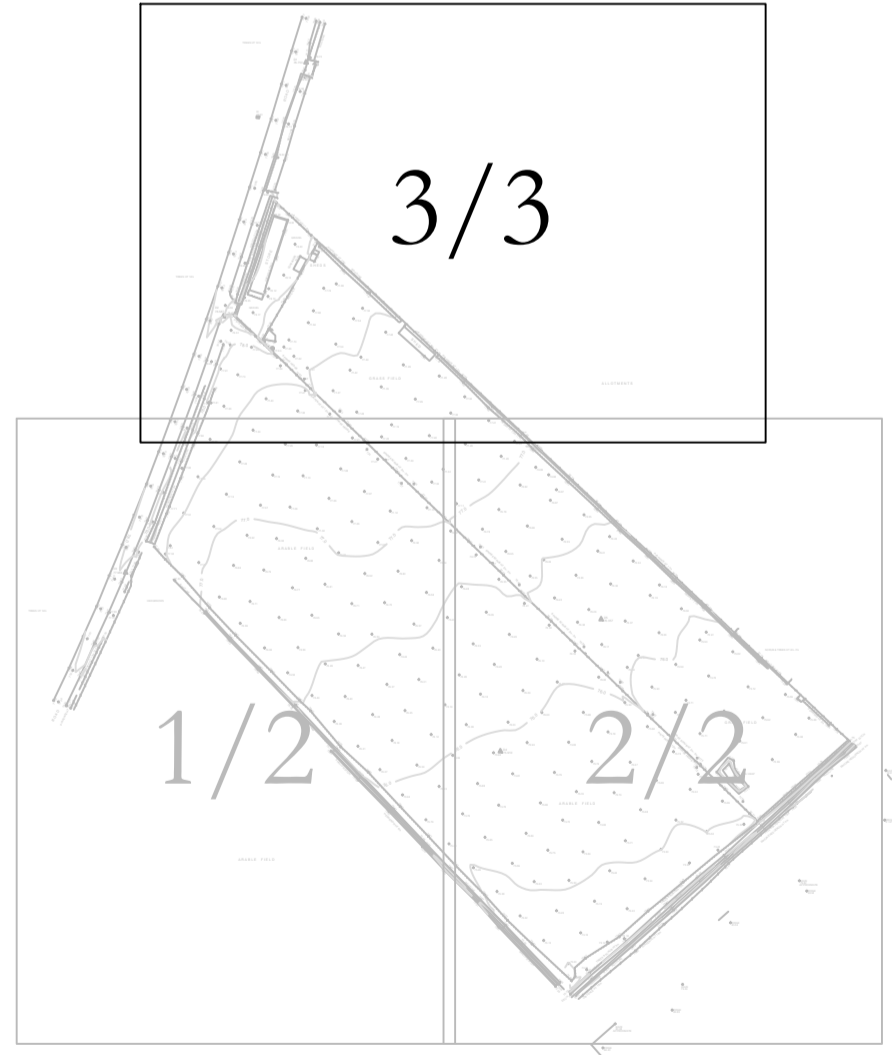


Key to Schedule of Trees. Table with columns: Column Heading, Tree No., Species, H (m), Branch Spread, Stem Dia, Height of crown clearance, Height of fine major branch, Branch and direction of growth, Abbreviations as suffix to a dimension, Age Class, Category grading and Estimated remaining Contribution (yrs), Estimated remaining Contribution (yrs), Tree Works, Root Protection Radius, Root Protection Area.



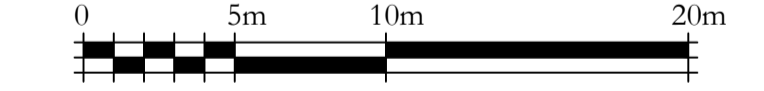
SURVEY OF TREES AT GREEN LANE, CHESTERTON. Table with columns: Tree No., Species, H (m), Branch Spread (m), Stem diameters (cm), More than 5 stems, More than 10 stems, Condition Physiological / Structural, Tree Works to BS 3998, Root protection radius (m), Root protection area (sqm).

Table with columns: Tree No., Species, H (m), Branch Spread (m), Stem diameters (cm), More than 5 stems, More than 10 stems, Condition Physiological / Structural, Tree Works to BS 3998, Root protection radius (m), Root protection area (sqm), and notes for each tree.



Sheet Layout

- Rev A 15.12.15 Revised layout imported. jtk
Rev B 23.08.16 Latest layout imported. jtk
Rev C 08.09.16 Latest layout imported. jtk
Rev D 01.11.16 Latest layout imported and protection measures amended accordingly. jtk
Rev E 08.11.16 Latest layout imported. jtk



CLIENT: CSA Environmental Planning
PROJECT: Land at Green Lane, Chesterton
TITLE: Tree Protection Plan
DRAWING NUMBER: 8364/02 Rev E 3/3
STATUS: For Information
DATE: Oct 2015 SCALE: 1:250 @ A1
DRAWN BY: ML CHECKED BY: JTK

Do not scale from this drawing. All dimensions to be checked on site. The copyright of this document resides with Ian Keen Limited unless assigned in writing by the company.



Note: The original of this drawing was produced in colour - a monochrome copy should not be relied upon. Tree survey based on RPS drawing number JKK8123 _1 Rev A. Site Plan based on Life Space Design drawing number LSD 129.04.01E. For tree protective barrier and ground protection details see drawing number 8364/02 Rev E 1/3.