

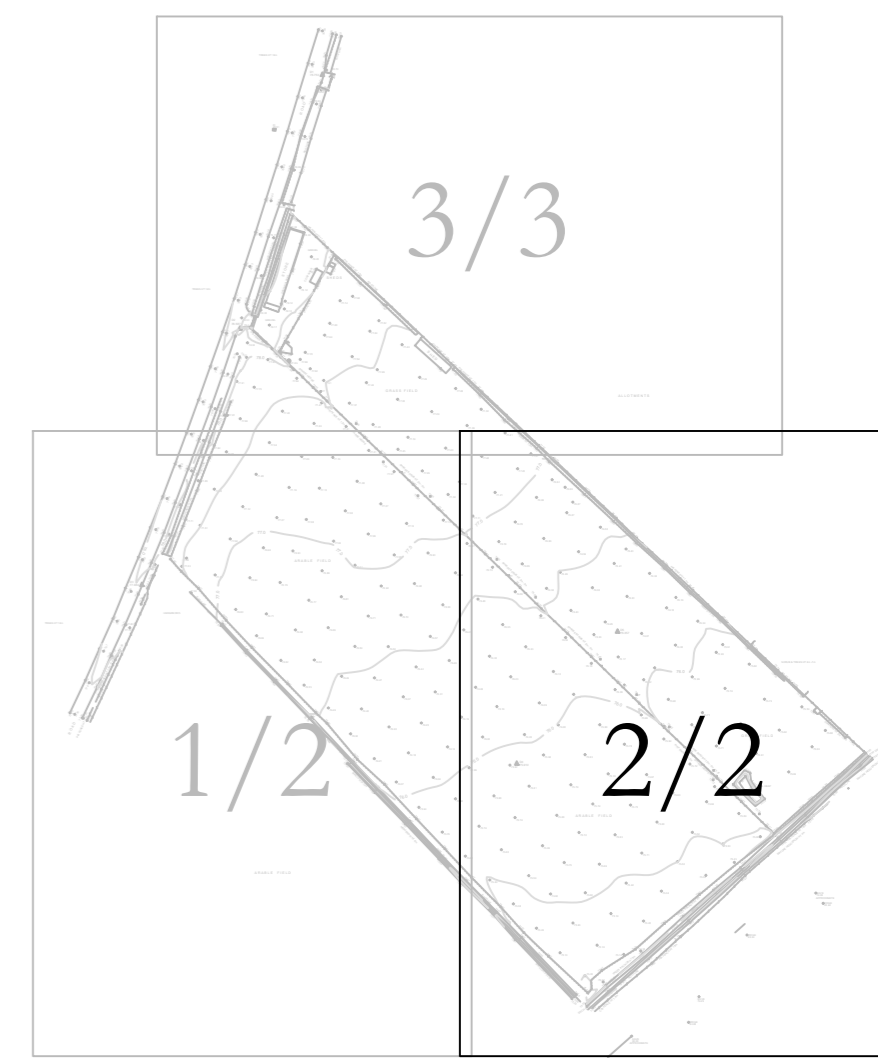
Note:  
The original of this drawing was produced in colour - a monochrome copy should not be relied upon.

Tree survey based on RPS drawing number JKK8123\_1 Rev A.

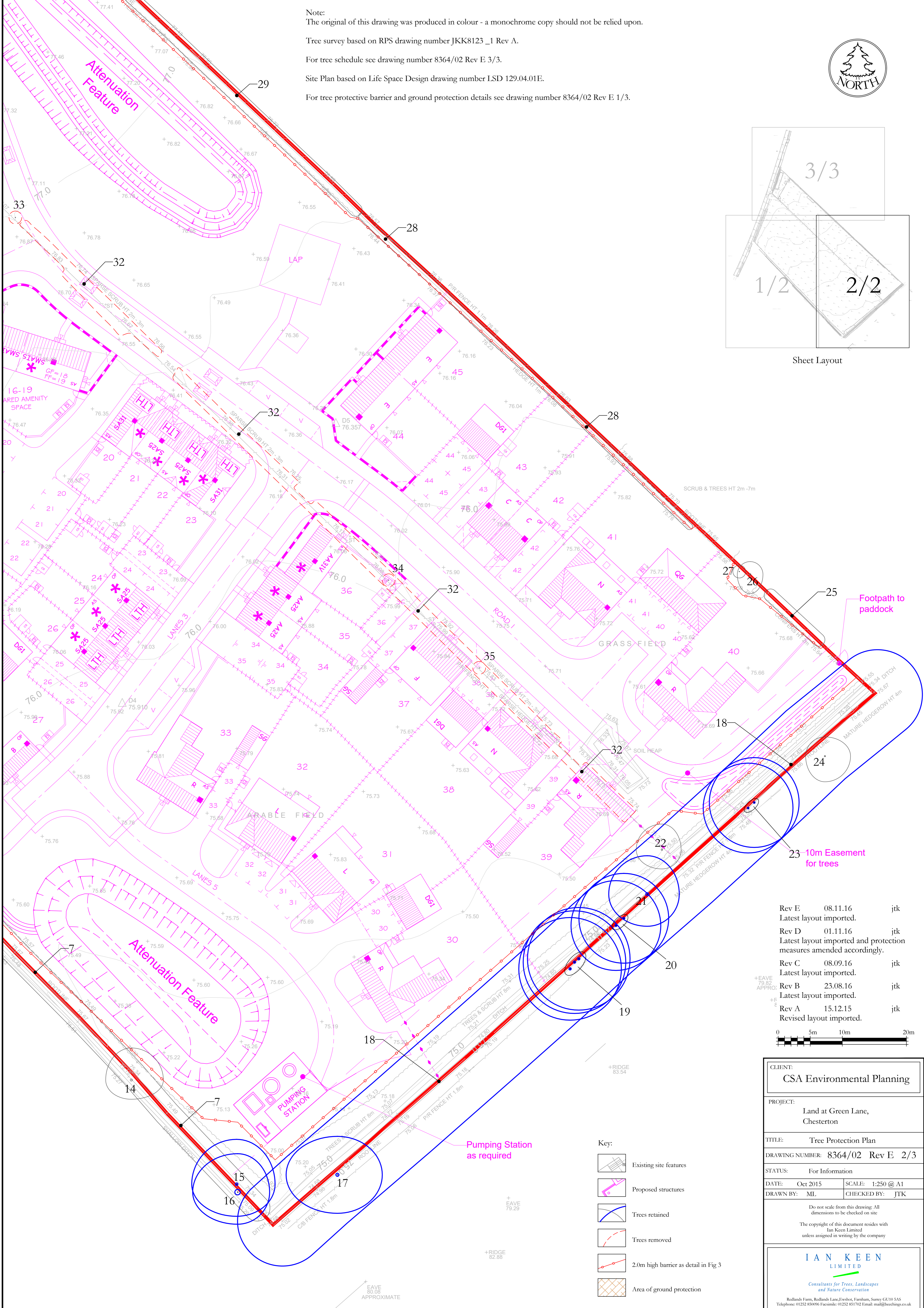
For tree schedule see drawing number 8364/02 Rev E 3/3.

Site Plan based on Life Space Design drawing number LSD 129.04.01E.

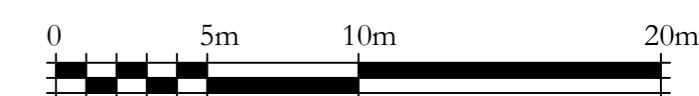
For tree protective barrier and ground protection details see drawing number 8364/02 Rev E 1/3.



Sheet Layout



Rev E	08.11.16	jtk
Latest layout imported.		
Rev D	01.11.16	jtk
Latest layout imported and protection measures amended accordingly.		
Rev C	08.09.16	jtk
Latest layout imported.		
Rev B	23.08.16	jtk
Latest layout imported.		
Rev A	15.12.15	jtk
Revised layout imported.		



CLIENT:  
**CSA Environmental Planning**

PROJECT:  
Land at Green Lane,  
Chesterton

TITLE:  
Tree Protection Plan

DRAWING NUMBER: 8364/02 Rev E 2/3

STATUS:  
For Information

DATE: Oct 2015      SCALE: 1:250 @ A1

DRAWN BY: ML      CHECKED BY: JTK

Do not scale from this drawing: All dimensions to be checked on site

The copyright of this document resides with Ian Keen Limited unless assigned in writing by the company

**IAN KEEN LIMITED**  
Consultants for Trees, Landscapes and Nature Conservation  
Rollands Farm, Rollands Lane, Fyfehol, Farnham, Surrey GU10 5AS  
Telephone: 01252 850096 Facsimile: 01252 851702 Email: mail@ikeyn.co.uk

- Key:
- Existing site features
  - Proposed structures
  - Trees retained
  - Trees removed
  - 2.0m high barrier as detail in Fig 3
  - Area of ground protection