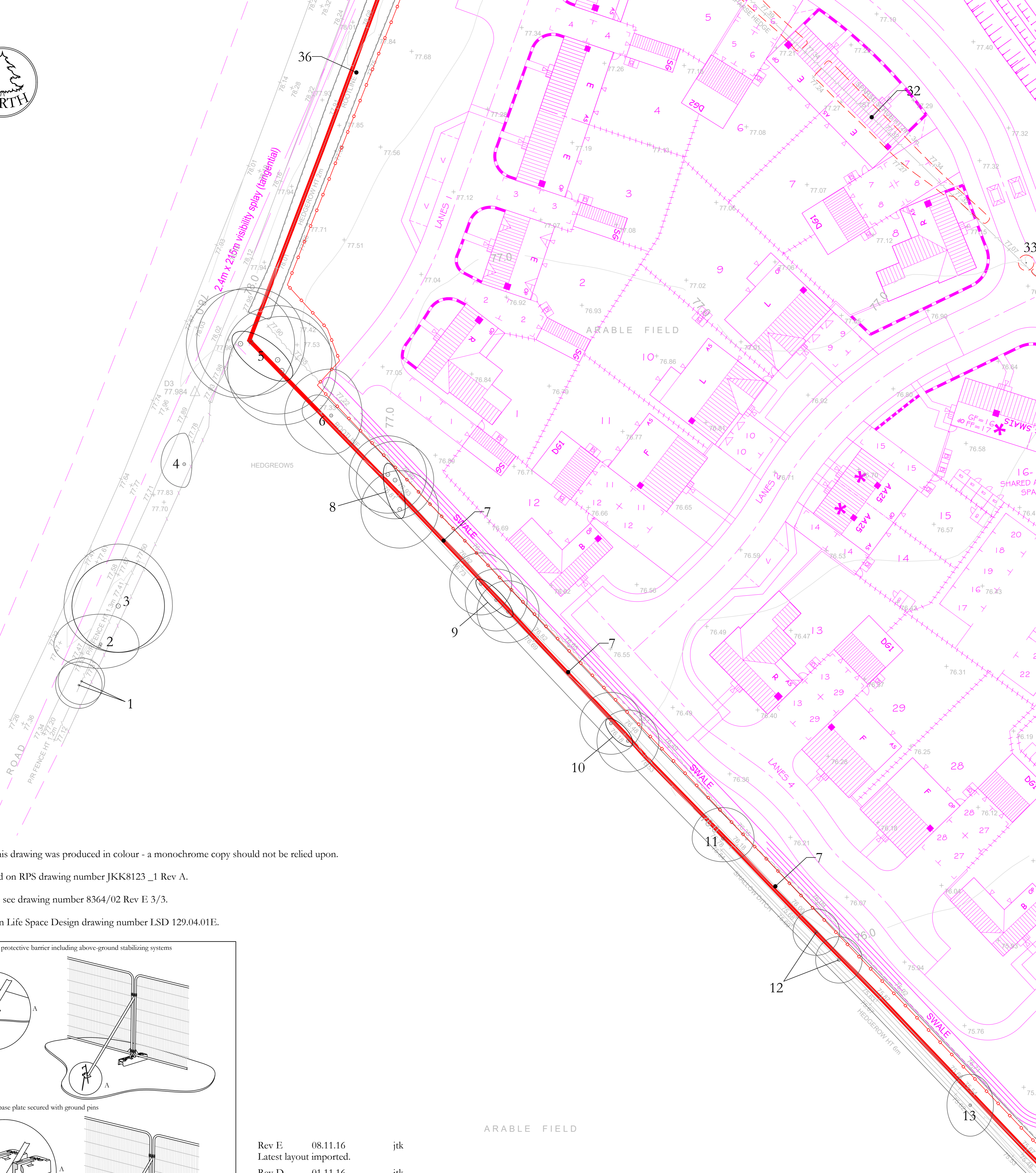
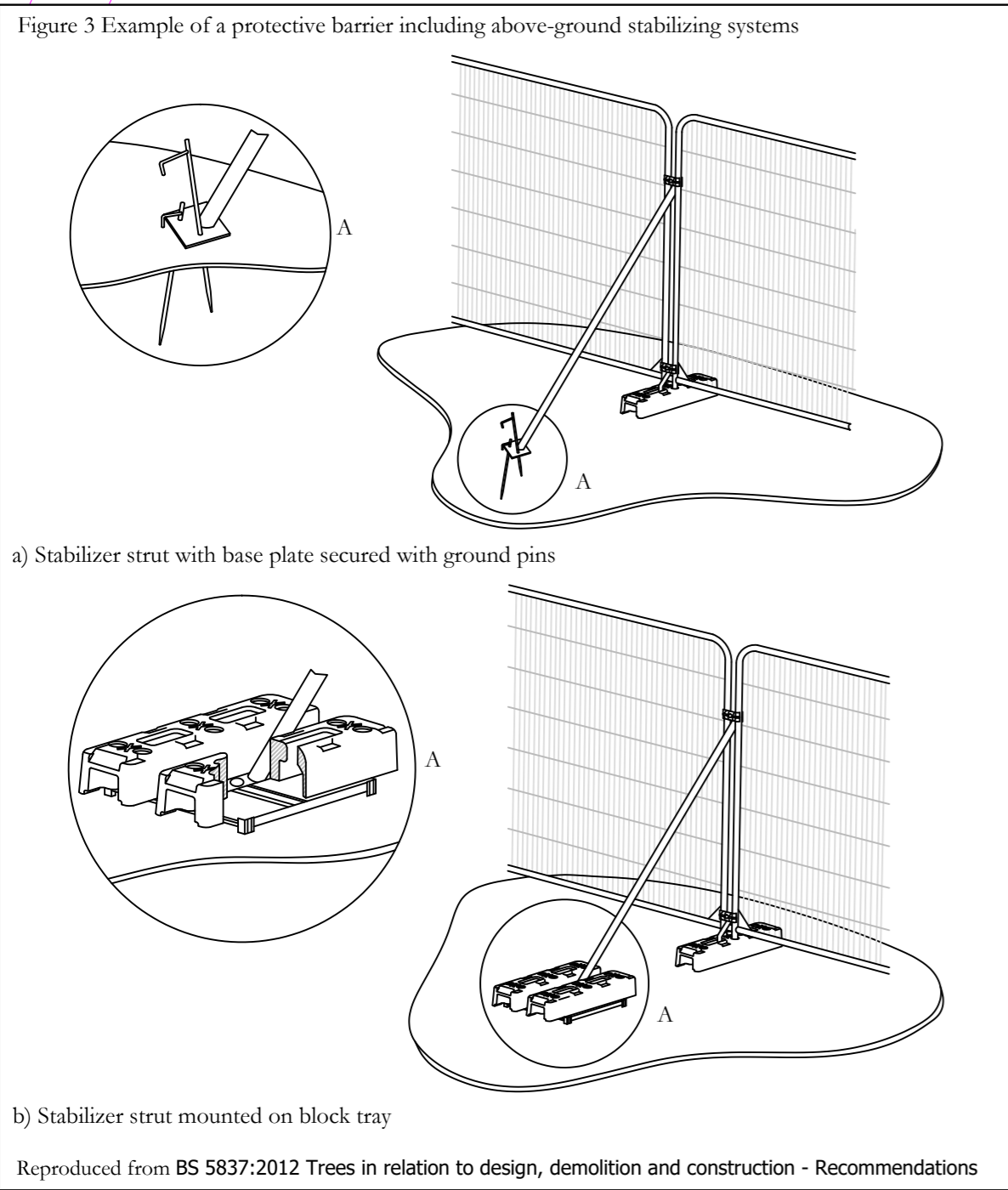




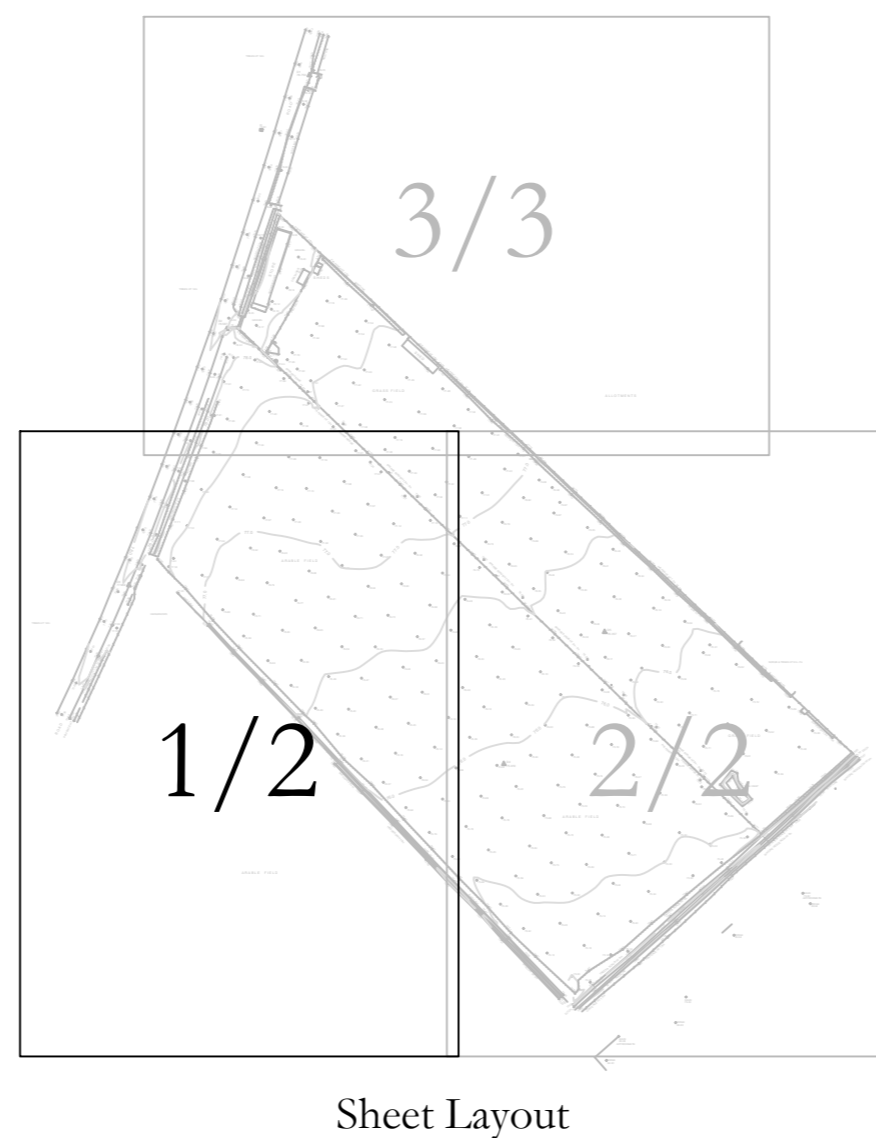
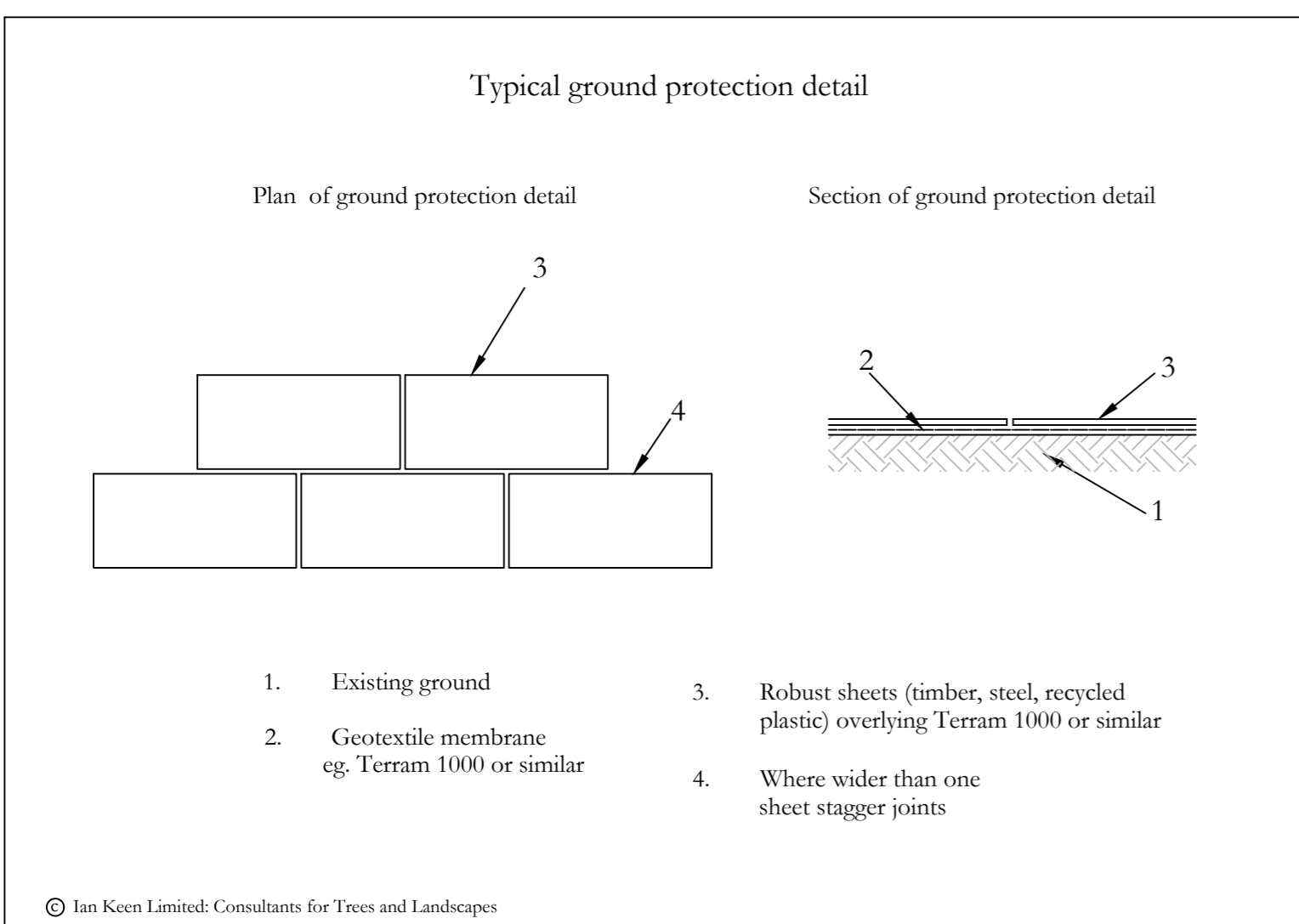
TREES HT 12m



Note:
 The original of this drawing was produced in colour - a monochrome copy should not be relied upon.
 Tree survey based on RPS drawing number JKK8123_1 Rev A.
 For tree schedule see drawing number 8364/02 Rev E 3/3.
 Site Plan based on Life Space Design drawing number LSD 129.04.01E.



- Rev E 08.11.16 jtk
Latest layout imported.
- Rev D 01.11.16 jtk
Latest layout imported and protection measures amended accordingly.
- Rev C 08.09.16 jtk
Latest layout imported.
- Rev B 23.08.16 jtk
Latest layout imported.
- Rev A 15.12.15 jtk
Revised layout imported.



- Key:
- Existing site features
 - Proposed structures
 - Trees retained
 - Trees removed
 - 2.0m high barrier as detail in Fig 3
 - Area of ground protection

CLIENT: CSA Environmental Planning	
PROJECT: Land at Green Lane, Chesterton	
TITLE: Tree Protection Plan	
DRAWING NUMBER: 8364/02 Rev E 1/3	
STATUS: For Information	
DATE: Oct 2015	SCALE: 1:250 @ A1
DRAWN BY: ML	CHECKED BY: JTK
Do not scale from this drawing: All dimensions to be checked on site.	
The copyright of this document resides with Ian Keen Limited unless assigned in writing by the company.	
 Consultants for Trees, Landscapes and Nature Conservation	
Rollands Farm, Rollands Lane, Ewelsh, Farnham, Surrey GU10 5AS Telephone: 01252 85096 Facsimile: 01252 851702 Email: mail@iandesigns.co.uk	