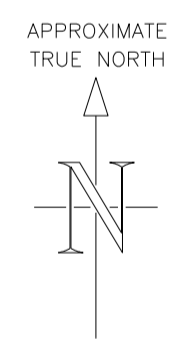
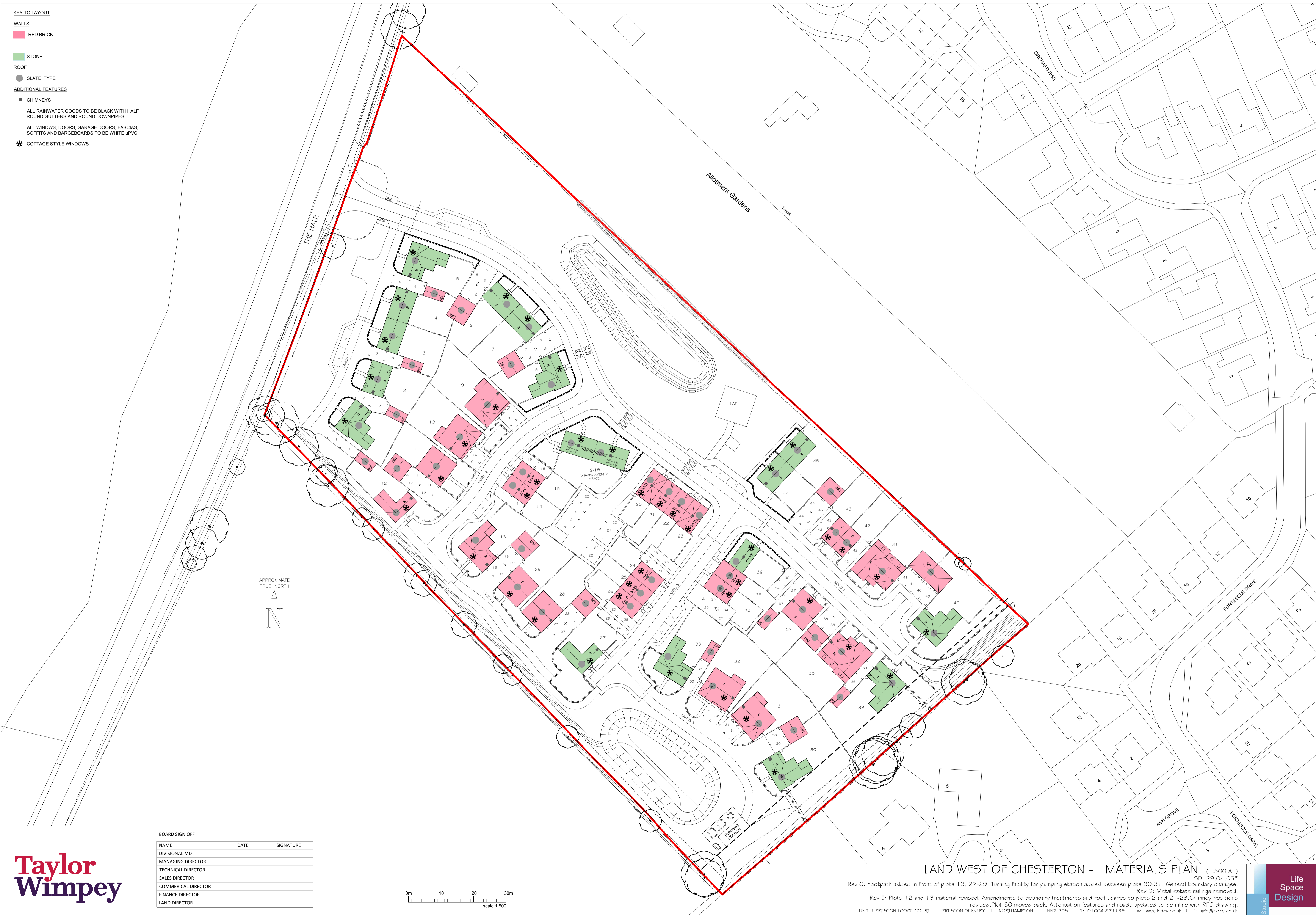


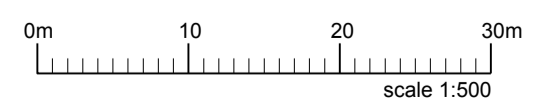
- KEY TO LAYOUT**
- WALLS**
- RED BRICK
- STONE**
- STONE
- ROOF**
- SLATE TYPE
- ADDITIONAL FEATURES**
- CHIMNEYS
 - ALL RAINWATER GOODS TO BE BLACK WITH HALF ROUND GUTTERS AND ROUND DOWNPIPES
 - ALL WINDOWS, DOORS, GARAGE DOORS, FASCIAS, SOFFITS AND BARGEBOARDS TO BE WHITE UPVC.
 - COTTAGE STYLE WINDOWS



BOARD SIGN OFF

NAME	DATE	SIGNATURE
DIVISIONAL MD		
MANAGING DIRECTOR		
TECHNICAL DIRECTOR		
SALES DIRECTOR		
COMMERCIAL DIRECTOR		
FINANCE DIRECTOR		
LAND DIRECTOR		

Taylor Wimpey



LAND WEST OF CHESTERTON - MATERIALS PLAN (1:500 A1)

Rev C: Footpath added in front of plots 13, 27-29. Turning facility for pumping station added between plots 30-31. General boundary changes.
 Rev D: Metal estate railings removed.
 Rev E: Plots 12 and 13 material revised. Amendments to boundary treatments and roof scapes to plots 2 and 21-23. Chimney positions revised. Plot 30 moved back. Attenuation features and roads updated to be inline with RFS drawing.

UNIT | PRESTON LODGE COURT | PRESTON DEANERY | NORTHAMPTON | NN7 2DS | T: 01604 871199 | W: www.lsdv.co.uk | E: info@lsdv.co.uk

