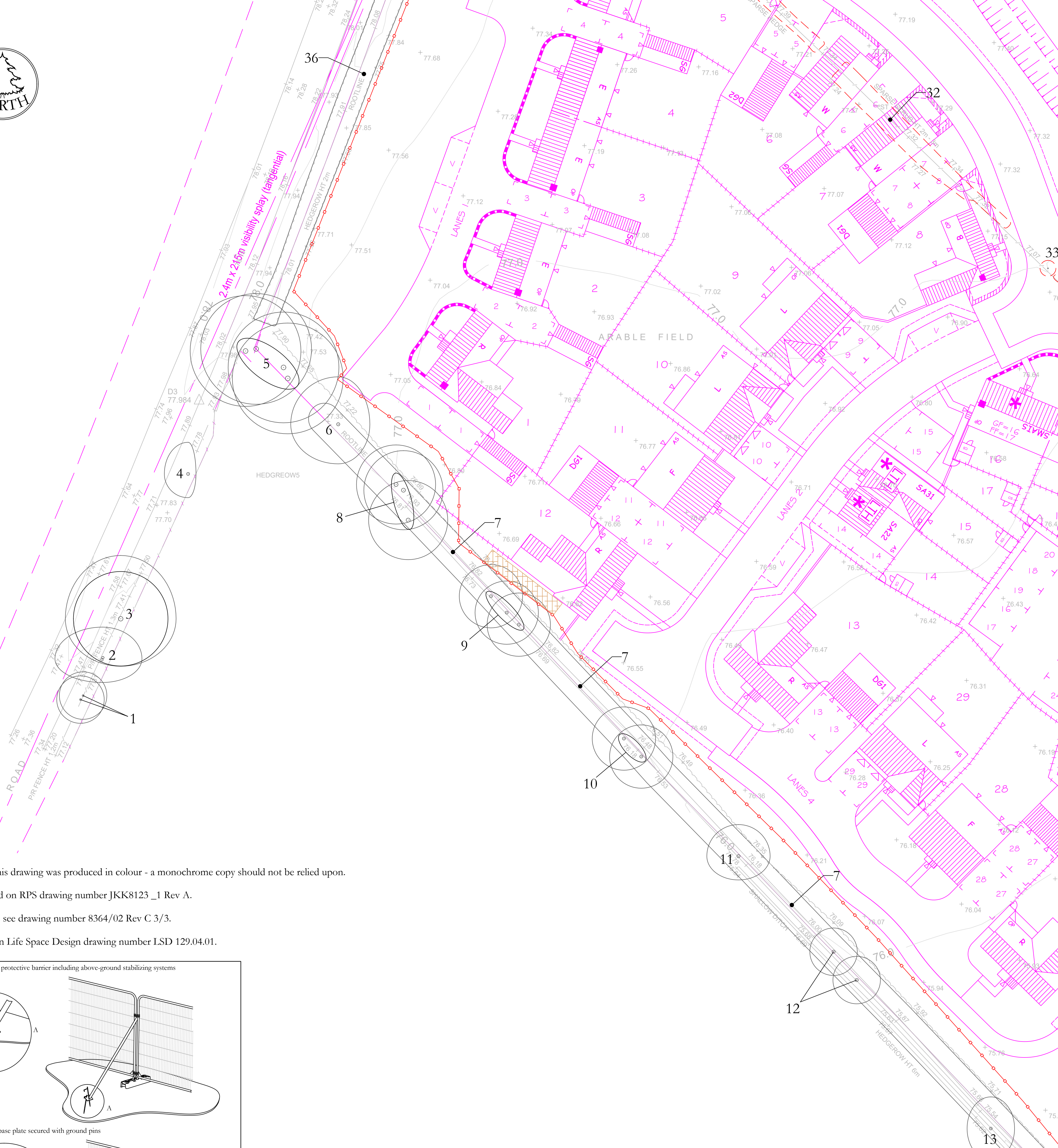
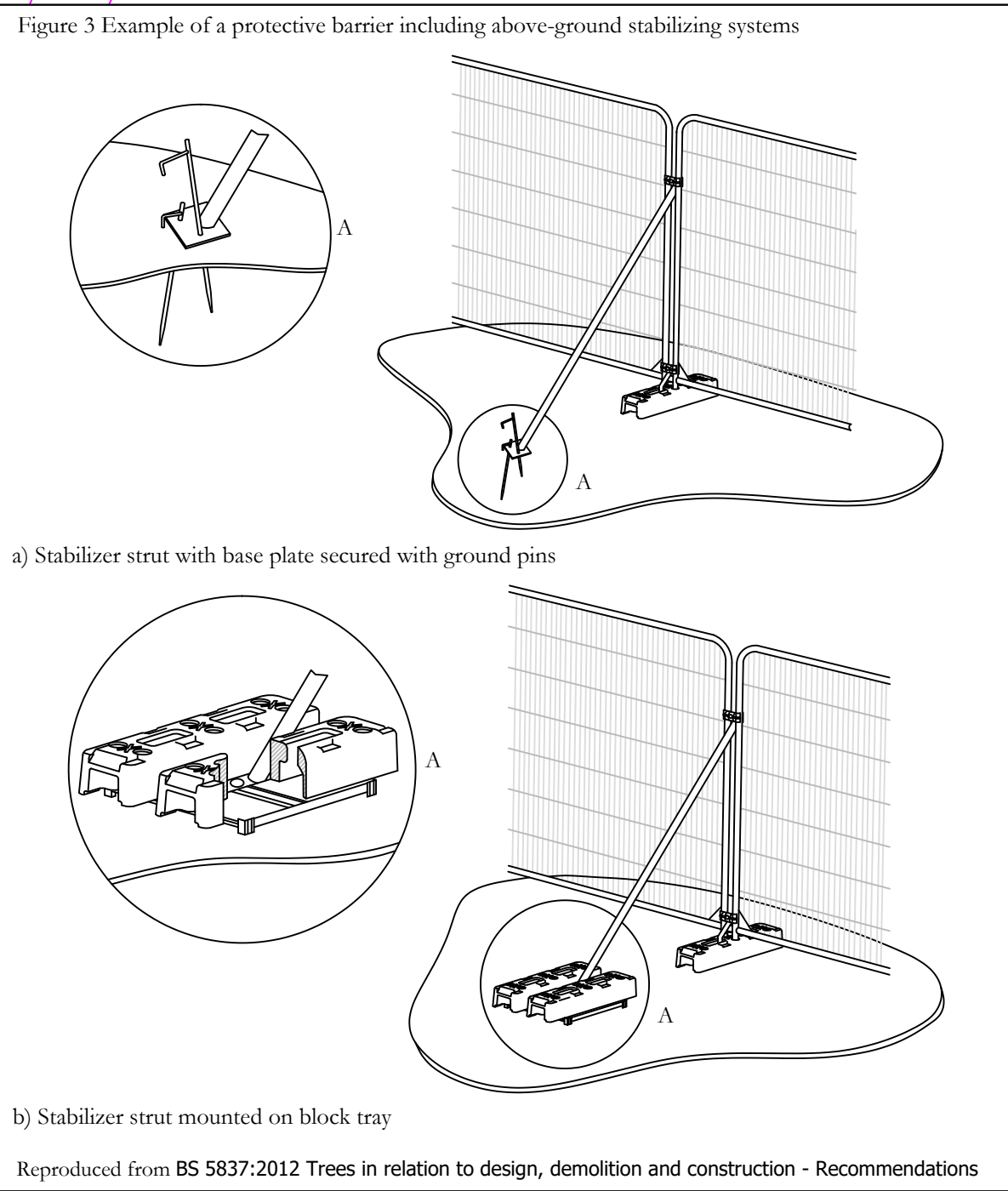




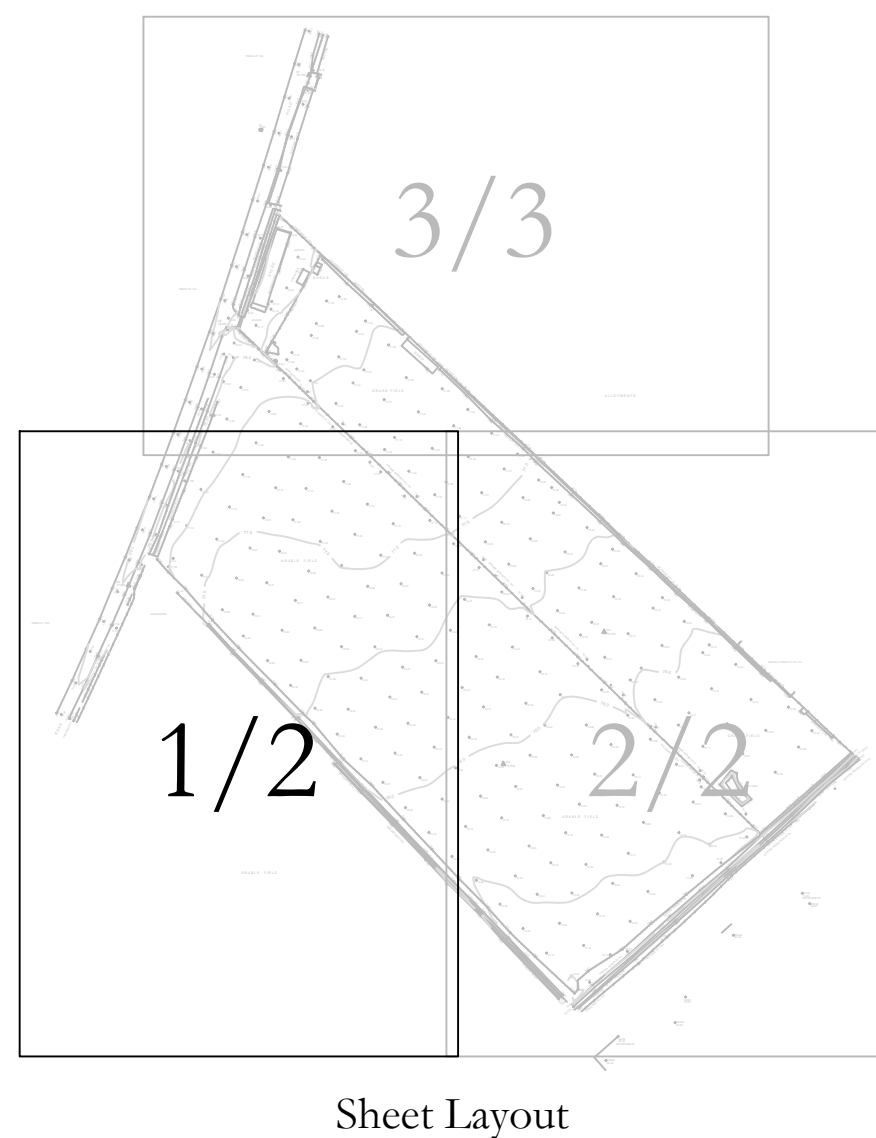
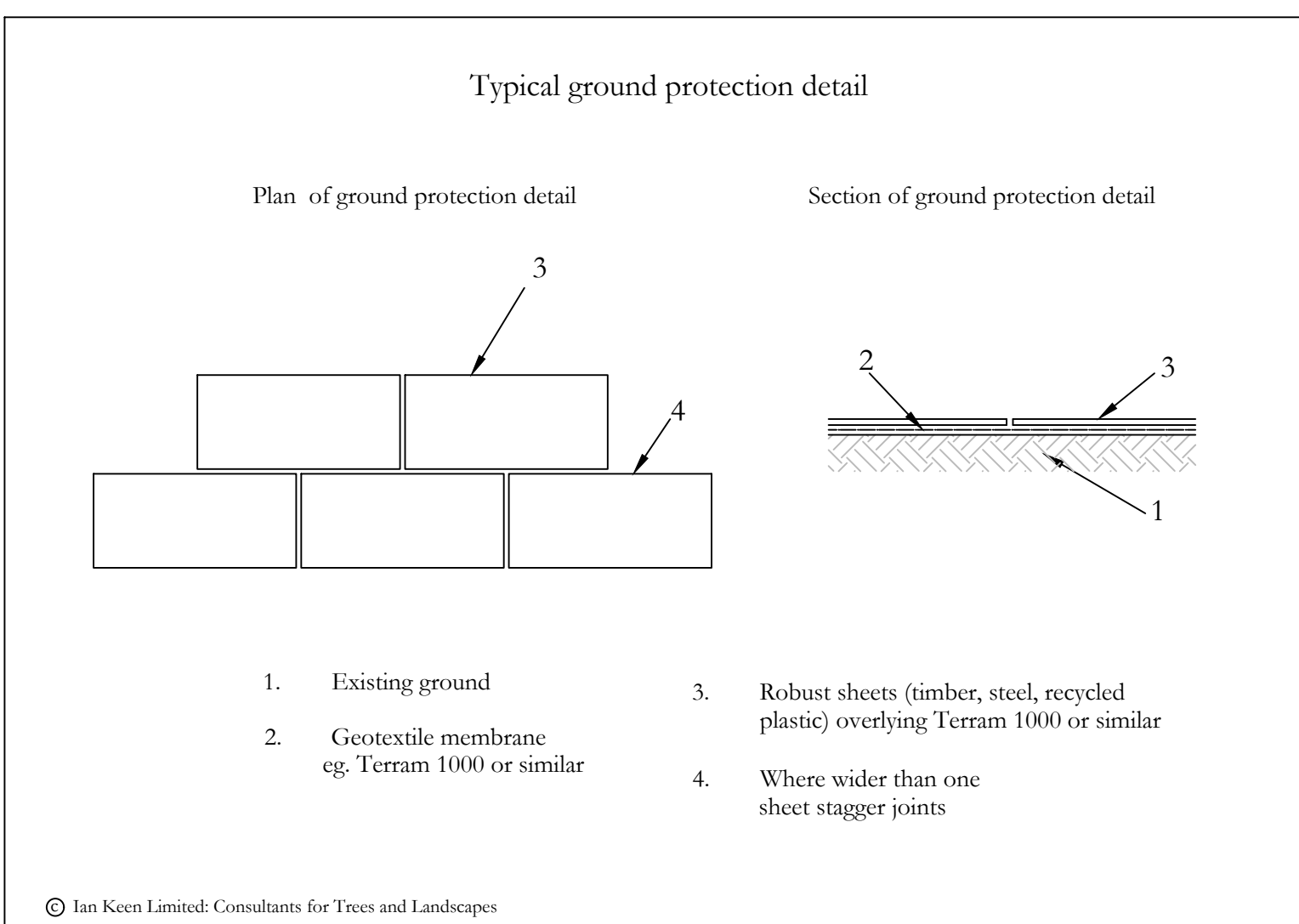
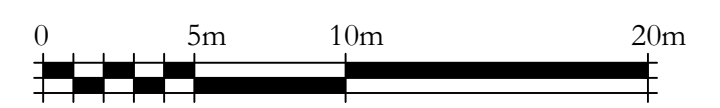
TREES HT 12m



Note:
 The original of this drawing was produced in colour - a monochrome copy should not be relied upon.
 Tree survey based on RPS drawing number JKK8123_1 Rev A.
 For tree schedule see drawing number 8364/02 Rev C 3/3.
 Site Plan based on Life Space Design drawing number LSD 129.04.01.



Rev C 08.09.16 jtk
 Latest layout imported.
 Rev B 23.08.16 jtk
 Latest layout imported.
 Rev A 15.12.15 jtk
 Revised layout imported.



- Key:
- Existing site features
 - Proposed structures
 - Trees retained
 - Trees removed
 - 2.0m high barrier as detail in Fig 3
 - Area of ground protection

CLIENT:
CSA Environmental Planning

PROJECT:
 Land at Green Lane,
 Chesterton

TITLE:
 Tree Protection Plan

DRAWING NUMBER: 8364/02 Rev C 1/3

STATUS: For Information

DATE: Oct 2015 SCALE: 1:250 @ A1

DRAWN BY: ML CHECKED BY: JTK

Do not scale from this drawing: All dimensions to be checked on site

The copyright of this document resides with Ian Keen Limited unless assigned in writing by the company

IAN KEEN LIMITED
 Consultants for Trees, Landscapes and Nature Conservation

Rollands Farm, Rollands Lane, Ewshot, Farnham, Surrey GU10 5AS
 Telephone: 01252 850096 Facsimile: 01252 851702 Email: mail@beechnings.co.uk