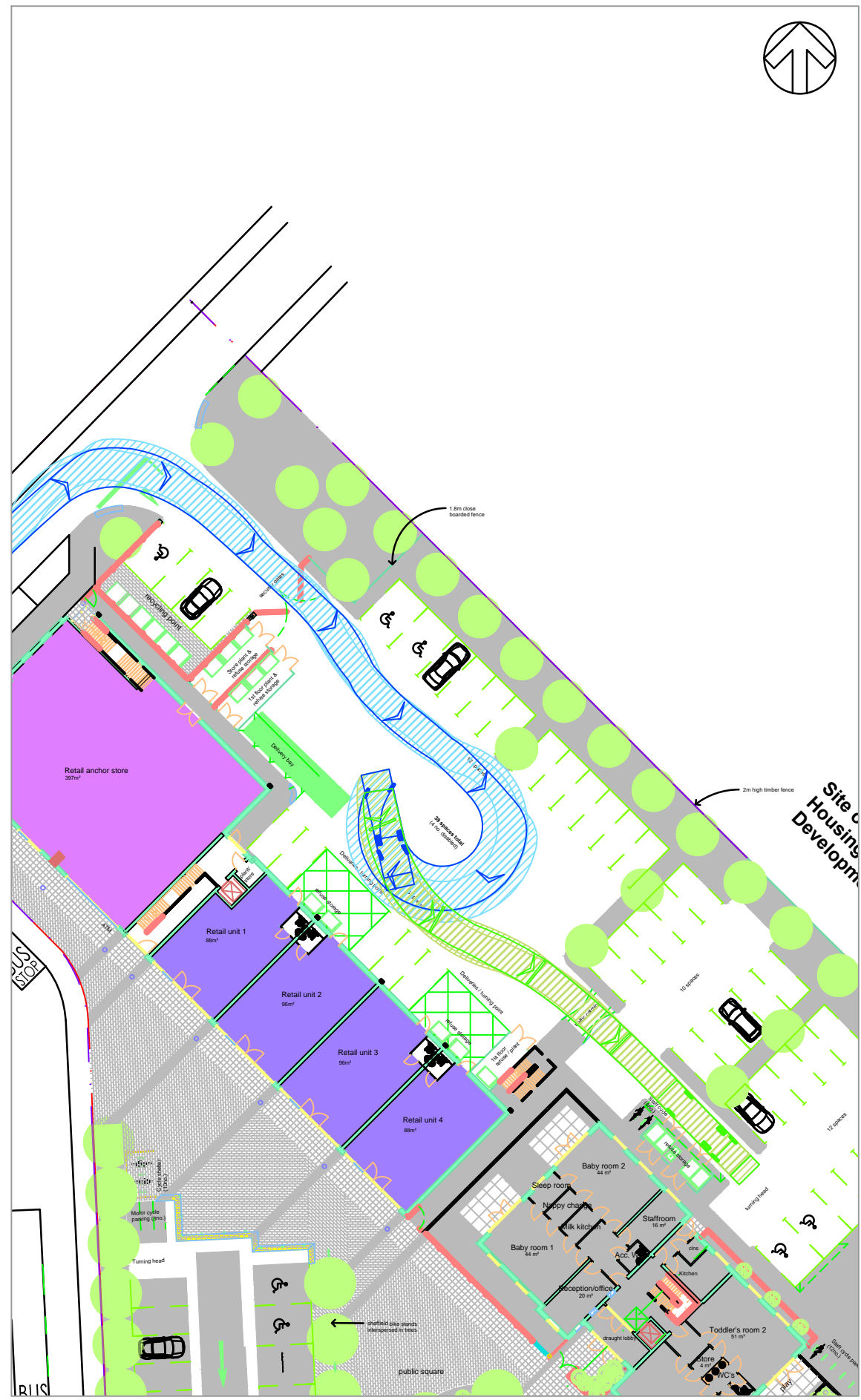
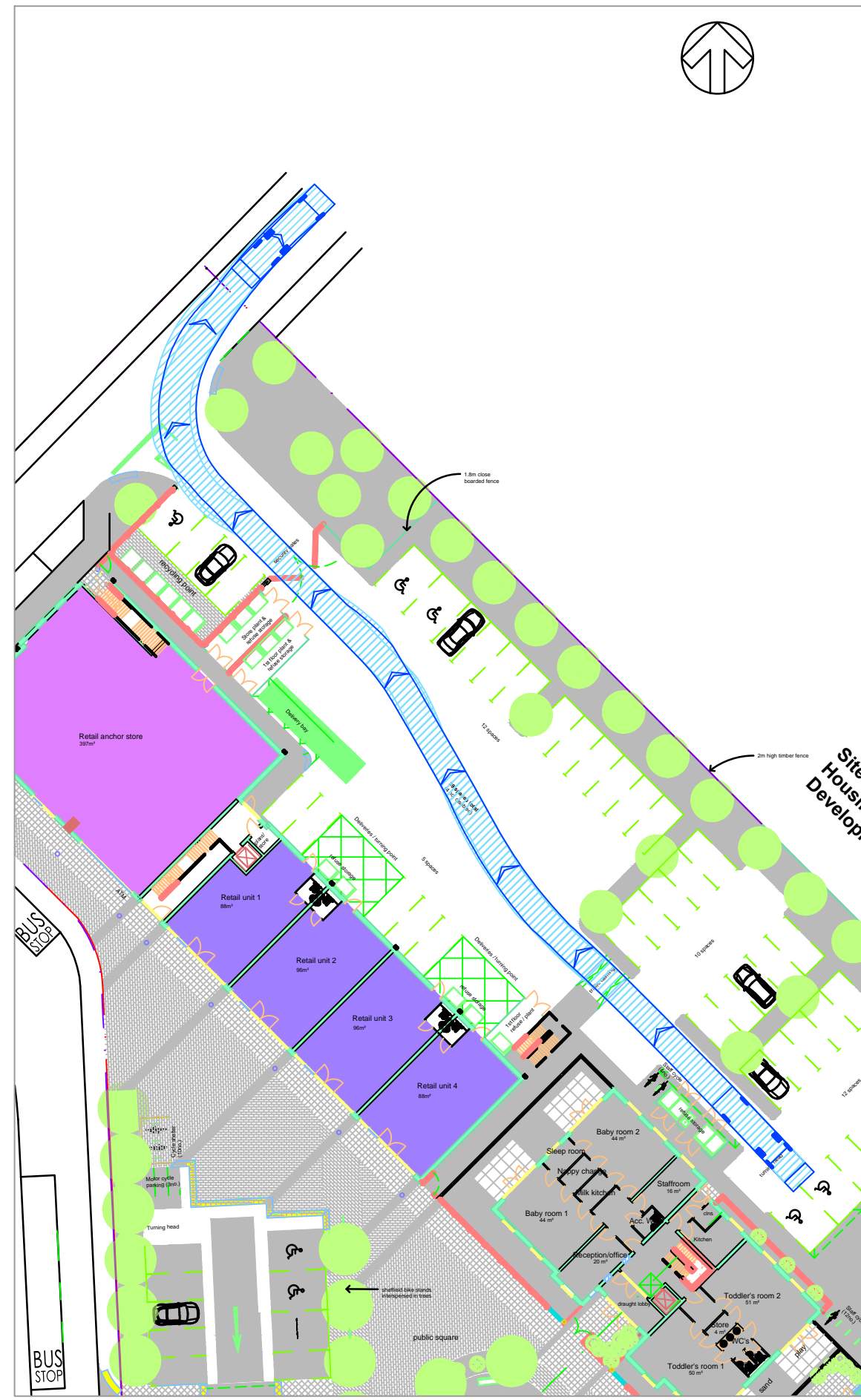


\\ser01bos1uk.wspgroup.com\projects\south_bicester\drawings\autocad\2779-atr-008.dwg, 17 June 2016 15:56:59, Anees, Arif

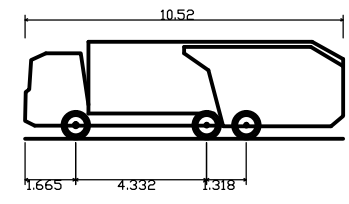


VEHICLE ENTRY
SCALE 1:500



VEHICLE EXIT
SCALE 1:500

DO NOT SCALE



Phoenix 2-23W (with Elite 2 6x2 RS chassis)
 Overall Length 10.520m
 Overall Width 2.530m
 Overall Body Height 3.211m
 Min Body Ground Clearance 0.416m
 Track Width 2.530m
 Lock to Lock Time 4.00s
 Kerb to Kerb Turning Radius 7.500m

| | | | | | |
|-----|----------|----|-------------|-----|-----|
| A | 17/06/16 | AA | FIRST ISSUE | AF | AF |
| REV | DATE | BY | DESCRIPTION | CHK | APD |

DRAWING STATUS: FOR ISSUE



Mountbatten House, Basing View, Basingstoke, Hampshire RG21 4HJ
 Tel: +44 (0)1256 318800 Fax: +44 (0)1256 318700
 www.wspgroup.com www.pbworld.com

CLIENT: COUNTRYSIDE PROPERTIES

ARCHITECT: HUNTERS

PROJECT: KINGSMERE BICESTER LOCAL CENTRE

TITLE: SWEPT PATH ANALYSIS
10.5m REFUSE VEHICLE

| | | |
|------------------|---------------|-----------|
| SCALE @ A3: | CHECKED: | APPROVED: |
| 1:500 | AF | AF |
| CAD FILE: | DESIGN-DRAWN: | DATE: |
| 2779-ATR-008.DWG | AA | June 16 |

| | | |
|-------------|--------------|------|
| PROJECT No: | DRAWING No: | REV: |
| 70012779 | 2779-ATR-008 | A |

PROJECT DOCUMENT REF:

© WSP Group Ltd