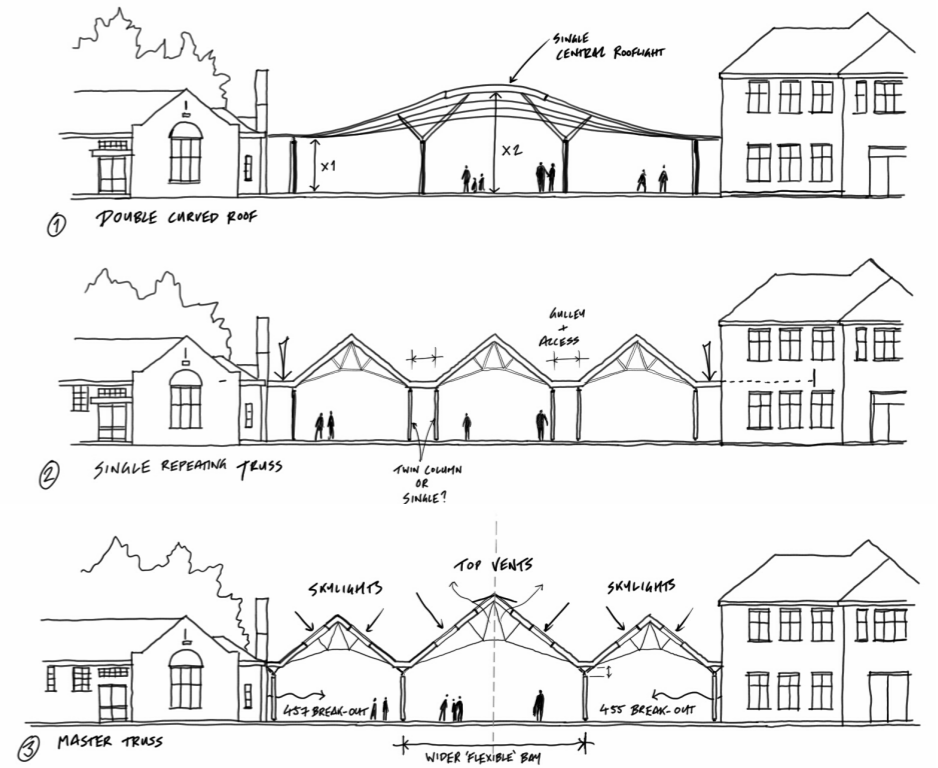
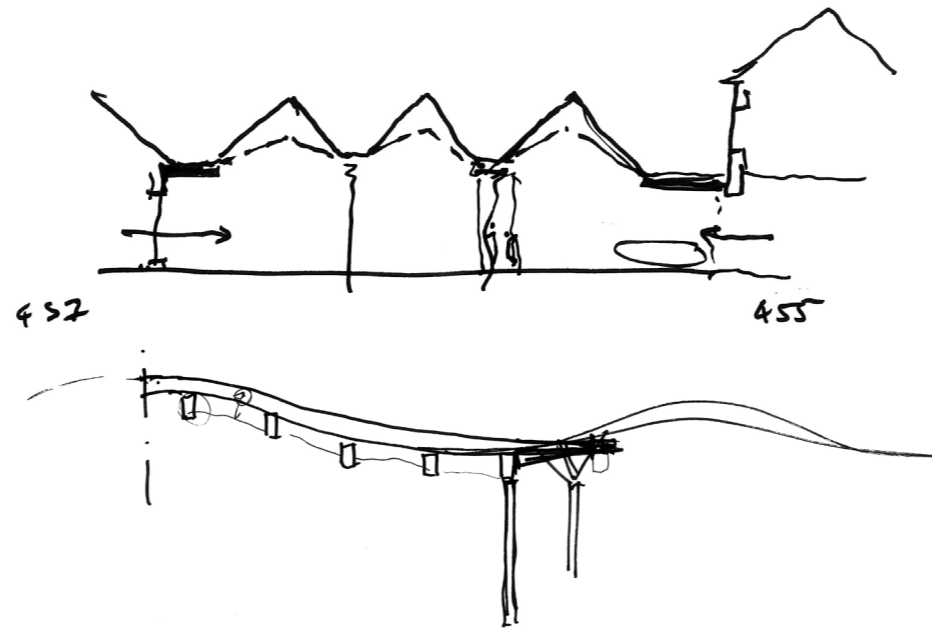


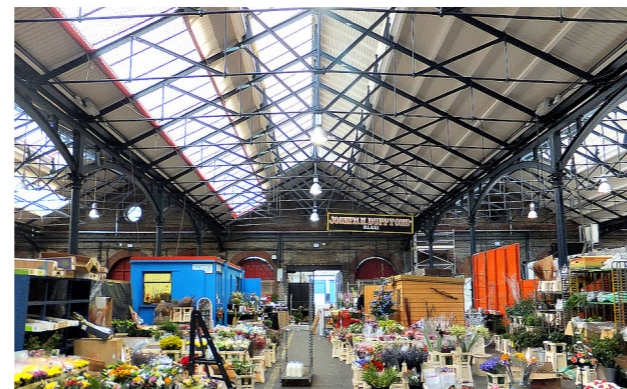
# 6/ The Canopy Link

## 6.1 Initial thoughts and architectural materiality

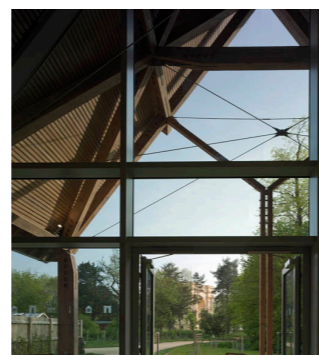
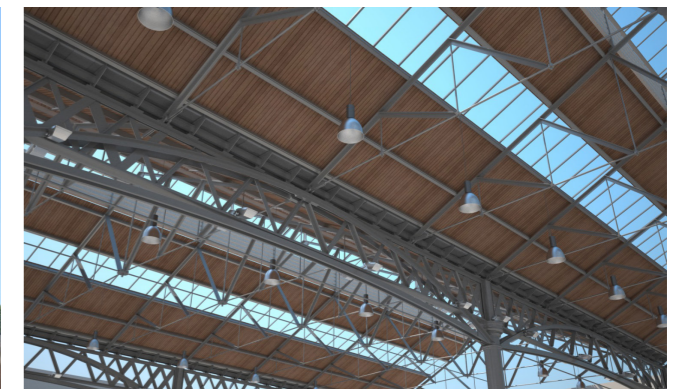
The Canopy Link occupies a key position within the centre. Bridging existing Buildings 457 & 455, the structure acts as the principal gateway to the Village Green beyond the square. The structure is intended more as a celebrated entrance rather than an inhabited building and its materiality has been considered accordingly. The traditional market section has been referenced in creating a glazed lightweight link which encourages a strong connection with the Village Green whilst being respectful towards its existing neighbours. Internally, one side of the Canopy Link is to be used as a cafe/delicatessen space, and the other for more flexible community space uses.



Design Inspiration



Long span trussed roof form



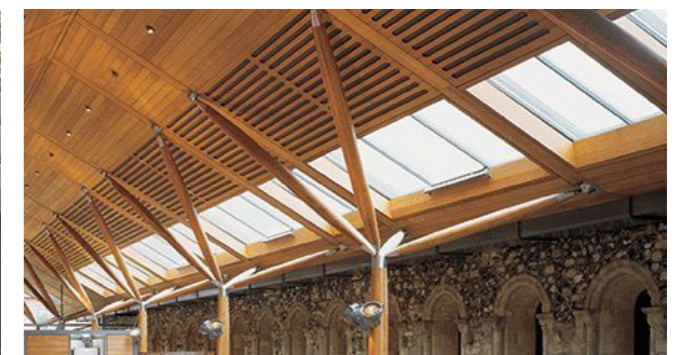
Glazed curtain wall & extended roof canopy



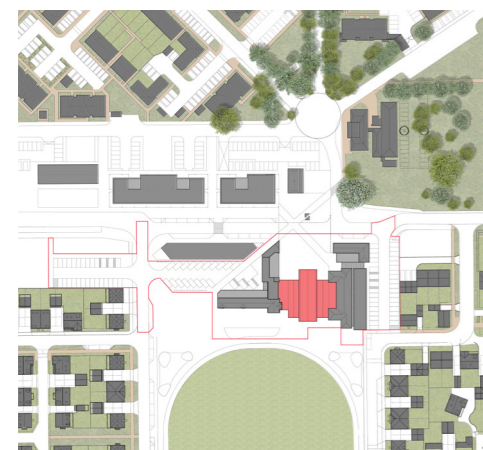
Glulam timber with slender steel bracing



Metal standing seam roof finish



Circular columns and struts



# 6/ The Canopy Link

## 6.2 Accessibility

Refer to Site Layout: Levels and Drainage in section 4.4.

A high quality single surface paving block will be continuous through the proposed canopy structure and towards the Village Green, forming a visual link between the focal point and the green. A level surface is proposed throughout.

## 6.3 Servicing

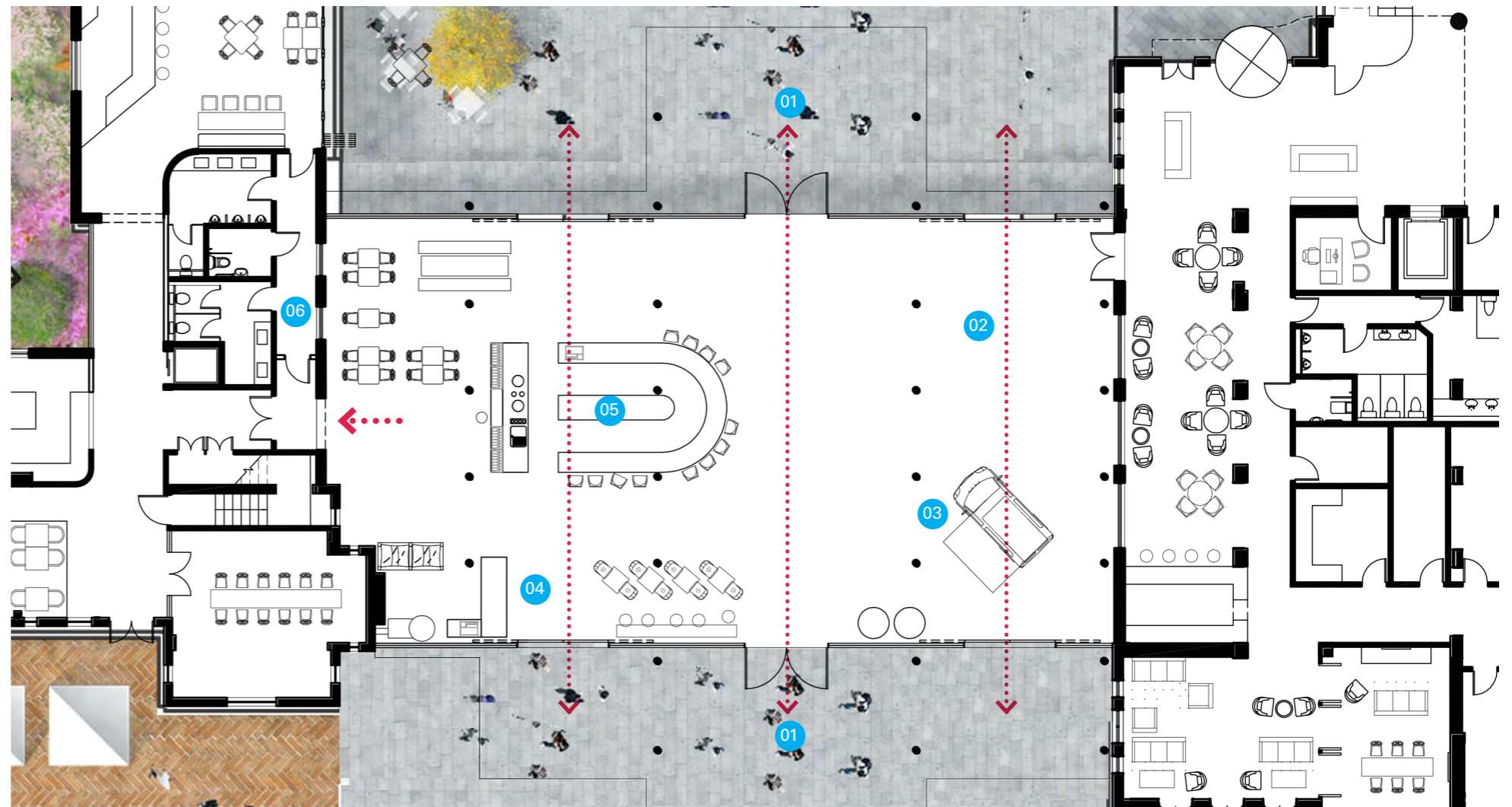
The Canopy Link will share its servicing with Building 457. Refer to section 4.5 and 4.6 for detail.

## 6.4 Accommodation Schedule

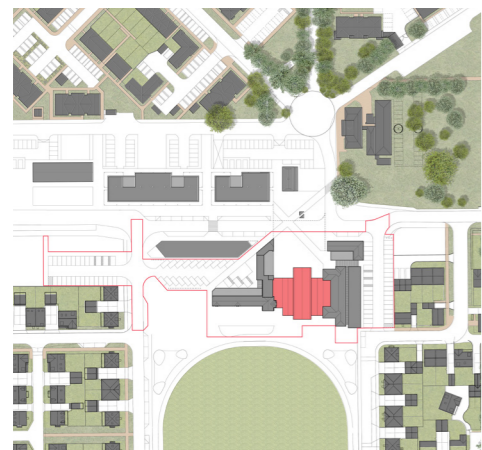
	Use Class	Area m <sup>2</sup>
Mixed Use	A1-A3, D1	403



South Elevation



Ground Floor Plan



**Key**

- 01 Main entrance from Village Square
- 02 Flexible space for events
- 03 Drive in food van
- 04 Coffee Roastery
- 05 Delicatessen Counter
- 06 WC (within Building 457)

## 6/ The Canopy Link



Internal View of Canopy Link to focal point



Internal view of Canopy Link



View to Canopy Link from Village Green