

4/ Site Design: Building 455, 457 and Canopy Link

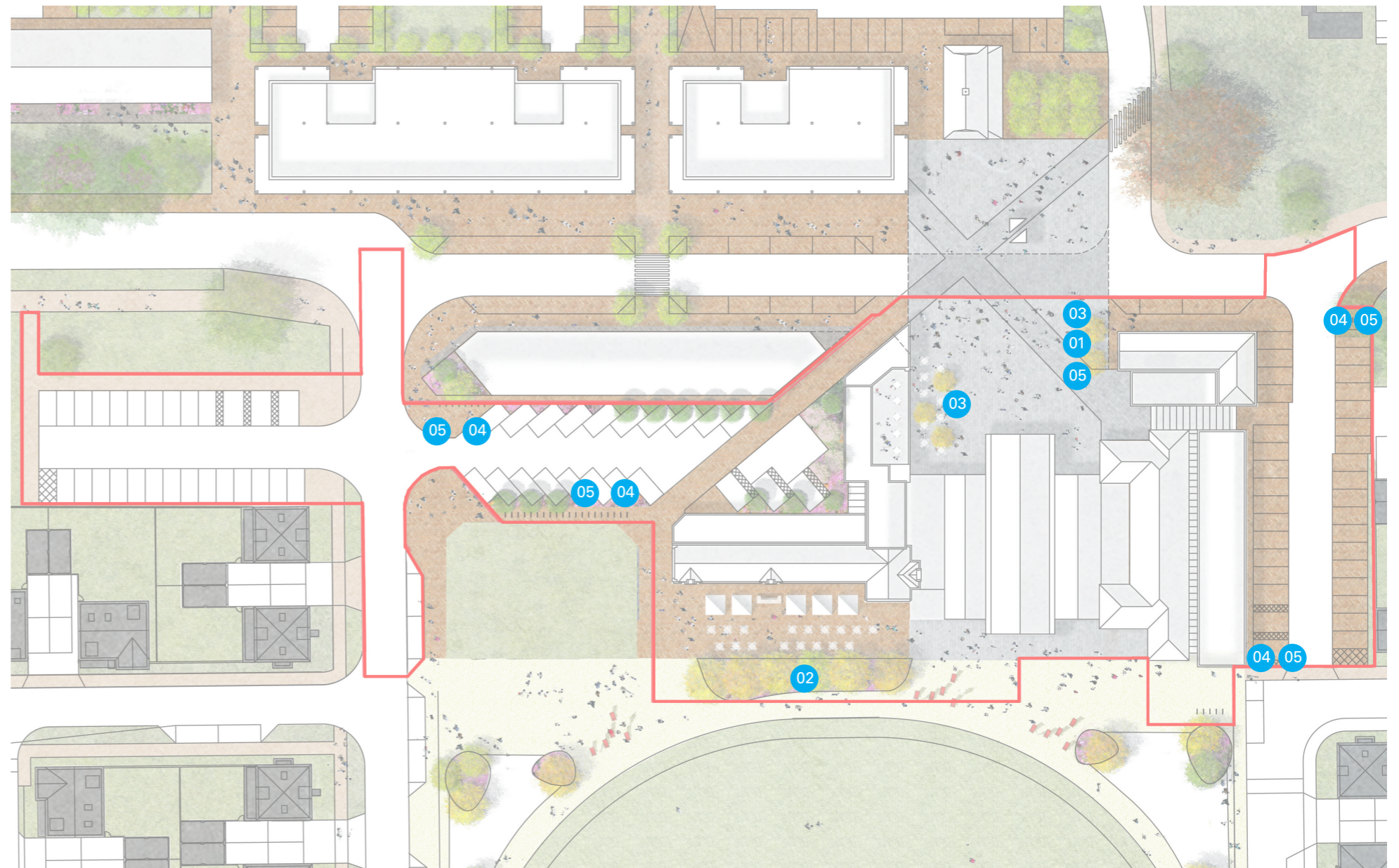
4.7 Public Furniture Strategy

The public furniture for the village centre has been selected drawing on the materials used in the landscape and architecture. Use of materials like steel, iron and timber complement the rural character of the site and give a personal element to the public spaces throughout the scheme.

Signage for the development will also be developed in coordination with a site wide strategy to be developed by the client to facilitate way finding particularly along Camp Road.

As part of client's community consultation, a range of moveable furniture will be co-designed with the community (appendix 1). This furniture range will be designed to facilitate public events which the client will facilitate throughout the year.

In addition the design, manufacture, installation, maintenance and operation of all street furniture products will comply with British Standards, relevant Codes of Practice and Construction Design Management regulations.



01 Steel Frame with Hardwood Timber Facing or similar approved



02 Timber shuttered concrete seating wall w/ polished seat surface or similar approved



03 Basic tree grate Concept Urbain or similar approved



04 Sheffield Cycle Stands or similar approved



05 Powder coated steel 80L rubbish bin or similar approved



4/ Site Design: Building 455, 457 and Canopy Link

4.9 Tree Removal Plan

A BS5837:2012 compliant tree survey has identified that the site's arboricultural resource consists of a total of 18 survey items made up of:

- Five moderate quality tree
- Twelve low quality trees
- One moderate quality tree group.

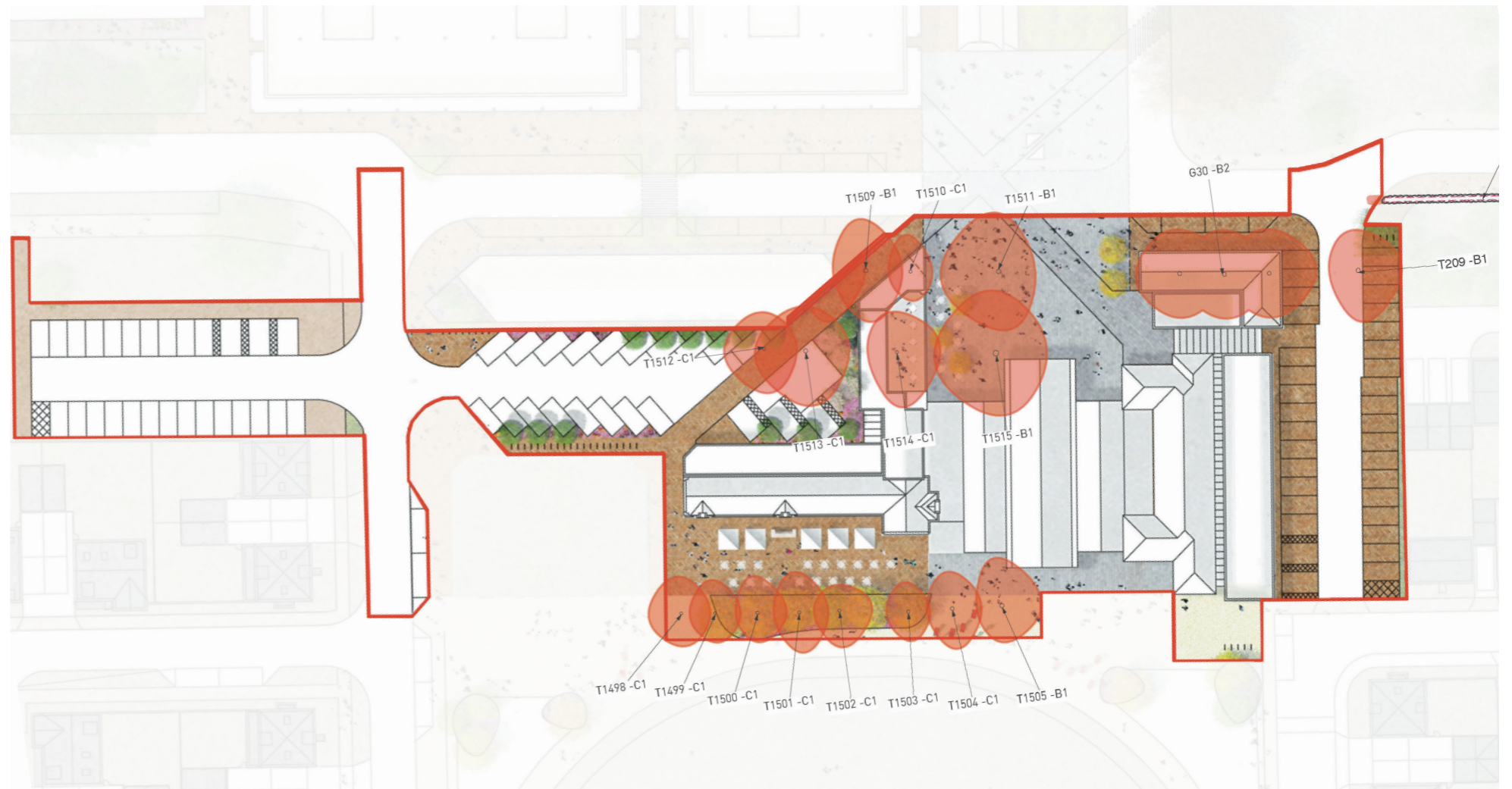
An arboricultural impact assessment has determined that all trees within the site red line should be removed and that this will be significant in the short and medium term. Despite initial arboricultural impacts, the removal of trees creates a positive opportunity for incorporation of considered new tree planting that will harmonise and effectively juxtapose with the village centre design.

It is anticipated that new tree planting will be in accordance with BS8545: 'Trees from nursery to independence in the landscape'. As such new tree planting will entail appropriate investment to ensure its sustainable into the long-term. Key aspects of new tree provision will include:

- Use of well-drained tree pits to incorporate appropriate soil volumes
- Use of structural soil that has been engineered to include good drainage and nutrient capacity
- Design of paved areas to encourage rainwater run off into properly drained rooting areas
- Incorporation of ventilation
- Use of cellular systems, for example ArborRaft (1), to prevent future root damage to built surfaces.

A systematic estimated evaluation of tree removals in the context of new trees indicates that the majority of tree removals will be effectively mitigated in the short term: 10-20 years. Considered 'in the round' the village centre proposals therefore achieve an optimum arboricultural outcome by inclusion of sustainable trees within a new design.

(1) <http://www.green-tech.co.uk/ArboRaft-Urban-Tree-Planting/>



Tree Removal Plan

KEY BS 5837:2012 Categories	
	Tree Category A - High Quality
	A Category - Hedgerow, Group, Woodland
	Tree Category B - Moderate Quality
	B Category - Hedgerow, Group, Woodland
	Tree Category C - Low Quality
	C Category - Hedgerow, Group, Woodland
	Tree Category U - Unsuitable for Retention
	Root Protection Area to BS 5837:2012
	Shrub Mass / Offsite Tree
	Tree / Hedgerow to be Removed