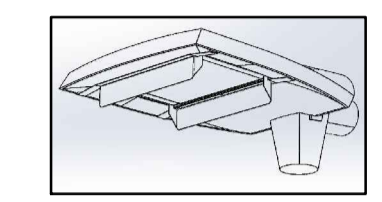
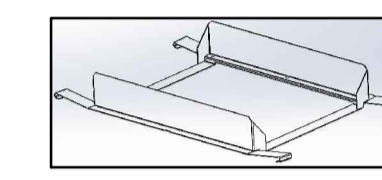


DO NOT SCALE

- KEY**
- 6m X Mini Luma 5 Klw CW R9
Zebra Optic on Belisha Column
Mini Luma R9 lamp(s) = 12-40 DS-CW 1 LED
candela file 'Mini Luma MIB R9 12-40 DS-CW 1 5000 CW LED.rvt'
1 lamp(s) per luminaire, 5000 initial lumens per lamp
Maintenance Factor = 0.740, watts per luminaire = 33
Outreach (from mounting axis to photometric center) = 500mm
mounting height = 6 m
number locations = 2, number luminaires = 2 kw
all locations = 0.1
 - 6m Mini Iridium G3 ECD45 WSD
BGP381 WSD GRN45/- No lamp(s)
GRN45/740/- candela file 'BGP381 IxGRN45_740 WSD.rvt'
1 lamp(s) per luminaire, 4520 initial lumens per lamp
Maintenance Factor = 0.740, watts per luminaire = 36
Outreach (from mounting axis to photometric center) = 500 mm
mounting height = 6 m
number locations = 10, number luminaires = 10 kw
all locations = 0.4



ZEBRA CROSSING/ BELISHA BEACON LANTERNS TO BE FITTED WITH REAR LOUVERES FOR MINI LUMA & LUMA 2 FITTING. CONTACT PHILIPS PUBLIC LIGHTING FOR DETAILS AND FITTING INSTRUCTIONS.

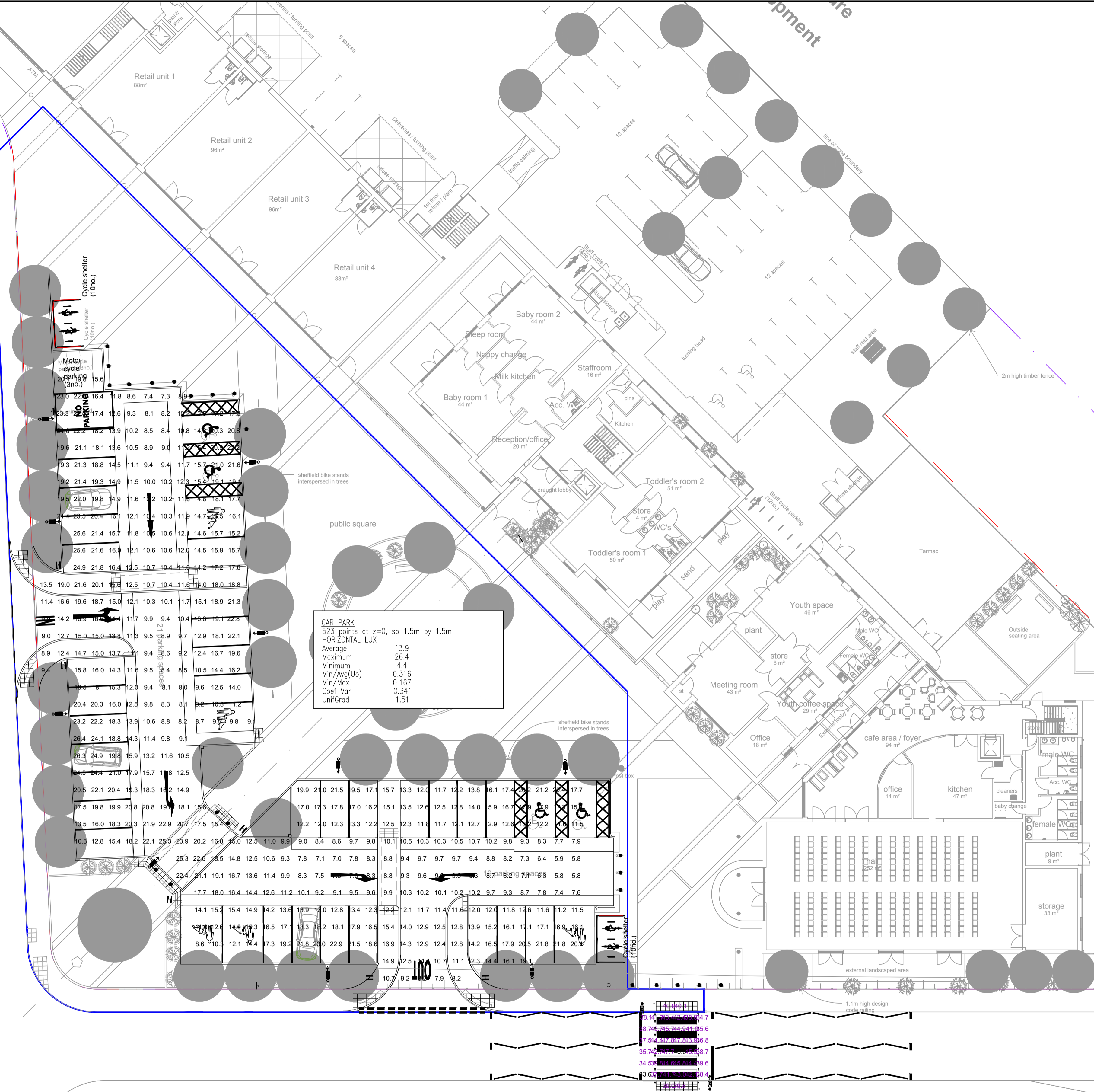


EXISTING COLUMN

NOTES:

- All Columns in Private Car Park to be Philips Kappa 2 6m standard galvanised steel column.
- Private luminaires use Philips Iridium GEN 3 BOP381 ECD45 WSO NW fitting fitted with electronic Mini Cell. These fittings will give a different look to the surrounding adopted luminaires.
- No Lighting Criteria provided for Car Park so illuminated to BS EN 5489 Pt 1 2013 Medium use Car Park = 10 lux ave, 0.4 Uo (Overall Uniformity).
- Added Adoptable Zebra Crossing luminaire as requested even though the specification requested these standard Zebra optic luminaire by other manufacturer. This fitting is our equivalent left hand distribution Zebra Optic (R9 optic). Luminaire itself is 5 Klw 33w. Please delete if not required. 2 No fittings shown as one required on each of the two 6m Belisha Beacon Columns.

- PROPOSED SITE BOUNDARY
- PROPOSED WSP CAR PARK WORKS BOUNDARY



CAR PARK
523 points at z=0, sp 1.5m by 1.5m
HORIZONTAL LUX

Average	13.9
Maximum	26.4
Minimum	4.4
Min/Avg(Uo)	0.316
Min/Max	0.167
Coef Var	0.341
UniGrad	1.51

ZEBRA CROSSING CARPET
40 points at z=0, sp 1m by 1m
HORIZONTAL LUX

Average	41.2
Maximum	48.0
Minimum	33.6
Min/Avg(Uo)	0.815
Min/Max	0.700
Coef Var	0.095
UniGrad	1.20

REV	DATE	BY	DESCRIPTION	CHK	APP
H	06/05/16	TRK	MASTERPLAN REVISED	JH	JH
G	04/05/16	TRK	LAYOUT UPDATED	JH	JH
F	10/02/16	TRK	PARKING BAYS UPDATED	JH	JH
E	09/02/16	TRK	PARKING BAYS UPDATED	JH	JH
D	12/11/15	TRK	LAYOUT UPDATED	JH	JH
C	23/10/15	TRK	LAYOUT UPDATED	AC	AC
B	29/09/15	FI	LAYOUT UPDATED	AC	AC
A	06/08/15	SMR	FIRST ISSUE	AC	AC

DRAWING STATUS: FOR INFORMATION ONLY

Mountbatten House, Basing View, Basingstoke, Hampshire RG21 4JH
Tel: +44 (0)1256 318800 Fax: +44 (0)1256 318700
http://www.wspgroup.com

CLIENT: COUNTRYSIDE PROPERTIES (BICESTER) LTD

ARCHITECT:

PROJECT: SOUTH WEST BICESTER BICESTER, OXFORDSHIRE

TITLE: LOCAL CENTRE CAR PARK STREET LIGHTING

SCALE @ A1: 1:200 @ A1	CHECKED: AD	APPROVED: AD
CAD FILE: 1903-LCP-1300	DESIGN/DRAWN: SMR	DATE: September 2015

PROJECT No: 11011903	DRAWING No: 1903-LCP-1300	REV: H
-------------------------	------------------------------	-----------

© WSP Group Ltd

S:\BICESTER NEW TOWN\DRAWINGS\AUTOCAD\LOCAL CENTRE CAR PARK\1903-LCP-1300 STREET LIGHTING REV H.DWG 06/05/2016 12:12:35 Killingbeck, Tim