

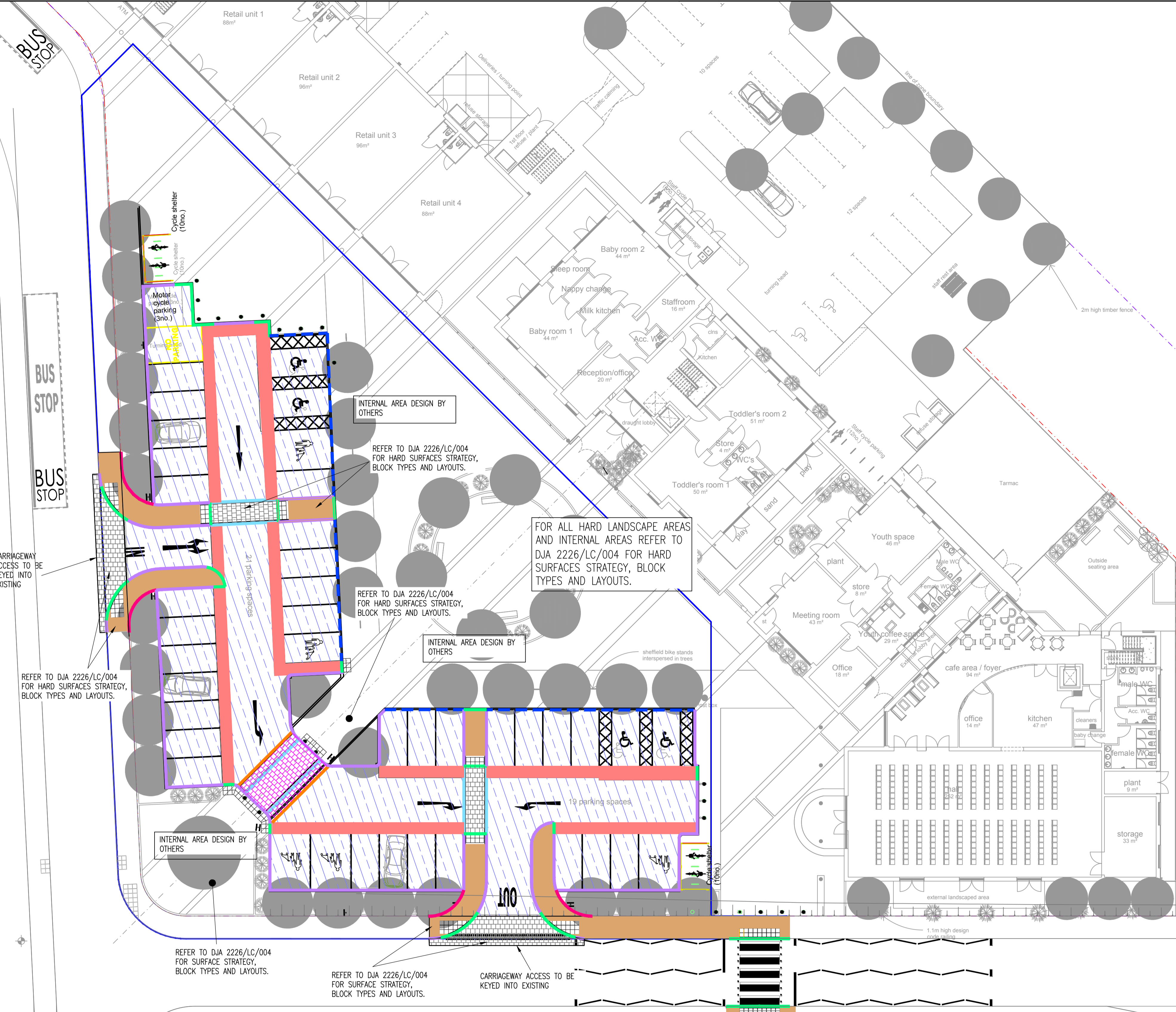
DO NOT SCALE

NOTES:

1. THIS DRAWING IS TO BE READ IN CONJUNCTION WITH ALL DRAWINGS AND NOTES FROM THE WSP LOCAL CENTRE CAR PARK DESIGN PACK. THE CONTRACTOR IS TO SATISFY THEMSELVES THAT THERE ARE NO DISCREPANCIES WITHIN THE DESIGN PACK BEFORE COMMENCING ON SITE.
2. ALL DIMENSIONS ARE IN METRES UNLESS OTHERWISE STATED, SIMILARLY ALL LEVELS ABOVE DATUM ARE ALSO IN METRES.
3. PRIOR TO THE COMMENCEMENT OF CONSTRUCTION WORKS, EXISTING LEVELS AND DIMENSIONS ARE TO BE CHECKED AND CONFIRMED ON SITE.
4. ANY DISCREPANCIES SHOULD BE REPORTED TO THE ARCHITECT/ENGINEER IMMEDIATELY SO THAT CLARIFICATION CAN BE SOUGHT PRIOR TO THE COMMENCEMENT OF WORK.
5. PRIOR TO CONSTRUCTION WORKS COMMENCING ON SITE, THE LOCATION OF ALL EXISTING SERVICES ARE TO BE CHECKED AND THEIR LOCATION CONFIRMED BY THE CONTRACTOR.
7. FOR LONGITUDINAL SECTIONS REFER TO DRAWING 1903-LCP-120
8. FOR DRAINAGE DESIGN REFER TO DRAWING 1903-LCP-500

KEY

- PROPOSED SITE BOUNDARY
- PROPOSED WSP CAR PARK WORKS BOUNDARY
- CARRIAGEWAY CONSTRUCTION TYPE 2, TO BE BUILT TO REQUIRED FINISH LEVELS. REFER TO SECTION DRAWING AND WSP STANDARD DETAIL 1903/SD/201 SPINE ROAD FULL DEPTH
- RED COLOURED SURFACING DENOTING PEDESTRIAN WALKWAY LAID ON FINISHED CARRIAGEWAY CONSTRUCTION SURFACE COURSE
- FOOTWAY INLAY CONSTRUCTION. BUILT FINISH LEVELS TO MATCH CARRIAGEWAY LEVELS. WSP STANDARD DETAIL 1903/SD/205. REFER TO DJA 2226/LC/004 FOR HARD SURFACES STRATEGY, BLOCK TYPES AND LAYOUTS.
- CONCRETE PAVOIRS MARSHALL TRAFICA CONSERVATION FLAGS 400x400x65. WSP STANDARD DETAIL 1903/SD/205. REFER TO DJA 2226/LC/004 FOR SURFACE STRATEGY, BLOCK TYPES AND LAYOUTS.
- PROPOSED TACTILE PAVING, REFER TO WSP STANDARD DETAILS 1903/SD/007. REFER TO DJA 2226/LC/004 FOR HARD SURFACES STRATEGY, BLOCK TYPES AND LAYOUTS.
- CONCRETE SETTS INLAY SEE WSP STANDARD DETAIL 1903/SD/207. CONCRETE SETTS TO BE MADE THE SAME WIDTH AS PEDESTRIAN WALKWAY. REFER TO DJA 2226/LC/004 FOR HARD SURFACES STRATEGY, BLOCK TYPES AND LAYOUTS.
- BLOCK PAVED PLATEAU (TABLETOP) SEE WSP STANDARD DETAIL 1903/SD/229. REFER TO DJA 2226/LC/004 FOR HARD SURFACES STRATEGY, BLOCK TYPES AND LAYOUTS.
- HB2 125mm UPSTAND CONSERVATION KERB (WSP STANDARD DETAIL 1903/SD/211)
- 255mm CONSERVATION BULL NOSE LAID INVERTED (WSP STANDARD DETAIL 1903/SD/211)
- 255mm CONSERVATION BULL NOSE 25mm UPSTAND (WSP STANDARD DETAIL 1903/SD/005)
- EF EDGING PEDESTRIAN DROPPED CROSSING (WSP STANDARD DETAIL 1903/SD/008)
- EF EDGING BACK OF FOOTWAY (WSP STANDARD DETAIL 1903/SD/008)
- MARSHALLS HB2 CONSERVATION SILVER GRAY BEANY BLOCK WITH (OR SIMILAR APPROVED) WITH 205mm BASE UNIT. REFER TO WSP DRAWING 1903-LCP-500 FOR DETAILS.



REV	DATE	BY	DESCRIPTION	CHK	APP
H	06/05/16	TRK	MASTERPLAN REVISED	JHS	JHS
G	04/05/16	TRK	HATCHING AND KERBING UPDATED	JHS	JHS
F	10/02/16	TRK	HATCHING AND KERBING UPDATED	JHS	JHS
E	09/02/16	TRK	HATCHING AND KERBING UPDATED	JHS	JHS
D	12/11/15	TRK	KEY UPDATED	JHS	JHS
C	29/09/15	FI	LAYOUT UPDATED	AC	AC
B	21/09/15	SMR	AMENDED TO RSA COMMENTS	AC	AC
A	06/08/15	SMR	FIRST ISSUE	AC	AC

DRAWING STATUS: FOR INFORMATION ONLY

Mountbatten House, Basing View, Basingstoke, Hampshire RG21 4JH
Tel: +44 (0)1256 318800 Fax: +44 (0)1256 318700
http://www.wspgroup.com

CLIENT: COUNTRYSIDE PROPERTIES (BICESTER) LTD

ARCHITECT:

PROJECT: SOUTH WEST BICESTER BICESTER, OXFORDSHIRE

TITLE: LOCAL CENTRE CAR PARK PAVEMENT AND KERBING

SCALE @ A1: 1:200 @ A1	CHECKED: AD	APPROVED: AD
CAD FILE: 1903-LCP-700	DESIGN/DRAWN: SMR	DATE: September 2015
PROJECT No: 110111903	DRAWING No: 1903-LCP-700	REV: H

© WSP Group Ltd

S:\BICESTER NEW TOWN\DRAWINGS\AUTOCAD\LOCAL CENTRE CAR PARK\1903-LCP-700 PAVEMENT AND KERBING REV H.DWG 06/05/2016 12:13:16 Killingbeck, Tim