

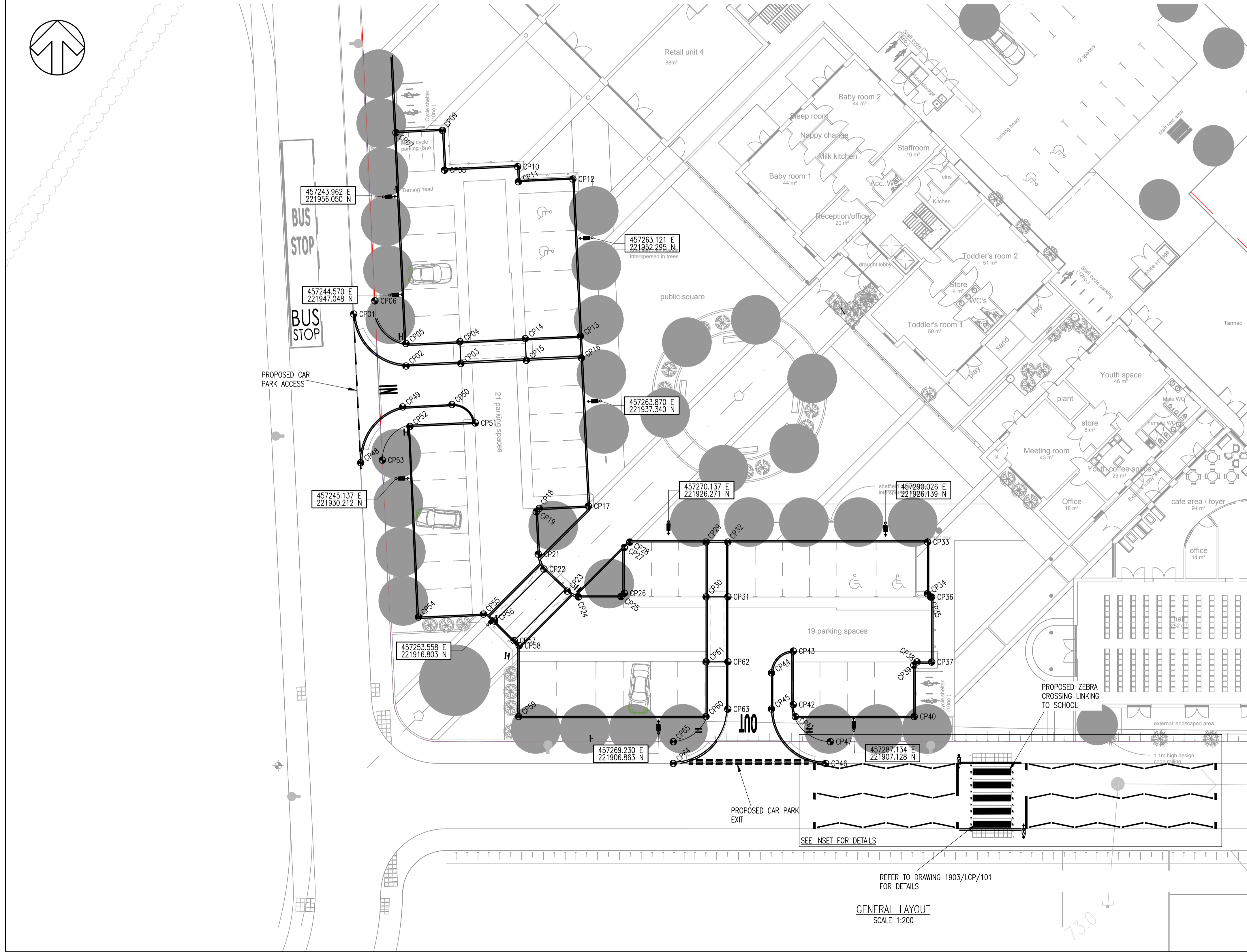
INSET 1  
SCALE 1:100

Zebra crossing Setting out		
Point No.	Easting	Northing
Z001	457296.8475	221904.0862
Z002	457302.4801	221904.0862
Z003	457296.8484	221898.0923
Z004	457302.4588	221898.0923

Car Park Kerb Setting out		
Point No.	Easting	Northing
CP01	457241.2534	221945.3032
CP02	457246.0554	221940.5361
CP03	457251.0890	221940.7742
CP04	457250.9945	221942.7715
CP05	457246.0459	221942.6054
CP06	457243.1989	221946.5163
CP07	457245.1231	221961.9406
CP08	457249.5788	221958.5023
CP09	457249.4075	221962.1432
CP10	457256.2920	221958.8198
CP11	457256.3590	221957.4460
CP12	457261.3590	221957.6850
CP13	457262.0424	221943.2808
CP14	457256.9914	221943.0500
CP15	457257.0856	221941.0579
CP16	457262.1314	221941.2823
CP17	457262.7741	221927.6967
CP18	457258.2842	221927.4851
CP19	457257.9939	221927.1660
CP21	457258.1777	221923.2801
CP22	457258.6989	221921.9158
CP23	457260.8351	221919.8996
CP24	457261.8796	221919.3638
CP25	457265.7743	221919.3922
CP26	457266.0793	221919.6972
CP27	457266.0793	221923.8910
CP28	457266.5805	221924.3922
CP29	457273.5793	221924.3914
CP30	457273.5769	221919.3721
CP31	457275.5791	221919.3721
CP32	457275.5815	221924.3922
CP33	457292.8910	221924.3920
CP34	457293.8820	221919.6610
CP35	547294.1820	221919.3560
CP36	457294.2751	221919.3563
CP37	457294.2751	221913.3922
CP38	457292.9256	221913.4063
CP39	457292.6256	221913.1013
CP40	457292.6751	221908.3922
CP41	457281.7654	221908.3922
CP42	457281.5751	221909.4862
CP43	457281.5751	221914.3922
CP44	457279.5751	221912.3922
CP45	457279.5751	221909.0862
CP46	457284.5414	221904.0863
CP47	457284.9751	221906.0862
CP48	457241.8907	221931.6691
CP49	457245.7555	221936.7879
CP50	457250.2675	221937.0104
CP51	457252.4012	221935.3173
CP52	457246.4121	221935.0022
CP53	457243.8813	221931.9112
CP54	457247.2024	221917.5146
CP55	457253.1491	221917.7842
CP56	457254.1811	221917.1421
CP57	457255.9703	221915.3529
CP58	457256.4282	221914.8950
CP59	457256.3786	221908.3921
CP60	457273.5695	221908.3922
CP61	457273.5782	221913.4083
CP62	457275.5791	221913.4082
CP63	457275.5695	221909.0755
CP64	457270.5695	221904.0862
CP65	457270.5781	221906.0886

- NOTES:**
- THIS DRAWING IS TO BE READ IN CONJUNCTION WITH ALL DRAWINGS AND NOTES FROM THE WSP LOCAL CENTRE CAR PARK DESIGN PACK. THE CONTRACTOR IS TO SATISFY THEMSELVES THAT THERE ARE NO DISCREPANCIES WITHIN THE DESIGN PACK BEFORE COMMENCING ON SITE.
  - ALL DIMENSIONS ARE IN METRES UNLESS OTHERWISE STATED, SIMILARLY ALL LEVELS ABOVE DATUM ARE ALSO IN METRES.
  - PRIOR TO THE COMMENCEMENT OF CONSTRUCTION WORKS, EXISTING LEVELS AND DIMENSIONS ARE TO BE CHECKED AND CONFIRMED ON SITE.

- KEY**
- PROPOSED SITE BOUNDARY
  - 01 KERB SETTING OUT POINT
  - STREET LIGHTING SETTING OUT POINT
  - ZEBRA CROSSING SIGNALS SETTING OUT POINT



GENERAL LAYOUT  
SCALE 1:200

REV	DATE	BY	DESCRIPTION	CHK	APD
G	06/05/16	TRK	MASTERPLAN REVISED	JH	JH
F	04/05/16	TRK	LAYOUT AND SETTING OUT COORDINATES REVISED	JH	JH
E	10/02/16	TRK	LAYOUT AND SETTING OUT COORDINATES REVISED	JH	JH
D	09/02/16	TRK	LAYOUT AND SETTING OUT COORDINATES REVISED	JH	JH
C	12/11/15	TRK	LAYOUT AND SETTING OUT COORDINATES REVISED	JH	JH
B	29/10/15	TRK	STREET LIGHTING SETTING OUT COORDINATES REVISED	AC	AC
A	27/10/15	TRK	FIRST ISSUE	AC	AC

DRAWING STATUS: FOR INFORMATION ONLY

Mountbatten House, Basing View, Basingstoke, Hampshire RG21 4JH  
Tel: +44 (0)1256 318000 Fax: +44 (0)1256 318700  
http://www.wspgroup.com

CLIENT: COUNTRYSIDE PROPERTIES (BICESTER) LTD

ARCHITECT:

PROJECT: SOUTH WEST BICESTER  
BICESTER, OXFORDSHIRE

TITLE: LOCAL CENTRE CAR PARK  
SETTING OUT

SCALE @ A1:	CHECKED:	APPROVED:
1:200 @ A1	AD	AD

CAD FILE:	DESIGN/DRAWN:	DATE:
1903-LCP-102	TRK	October 2015

PROJECT No:	DRAWING No:	REV:
11011903	1903-LCP-102	G

© WSP Group Ltd