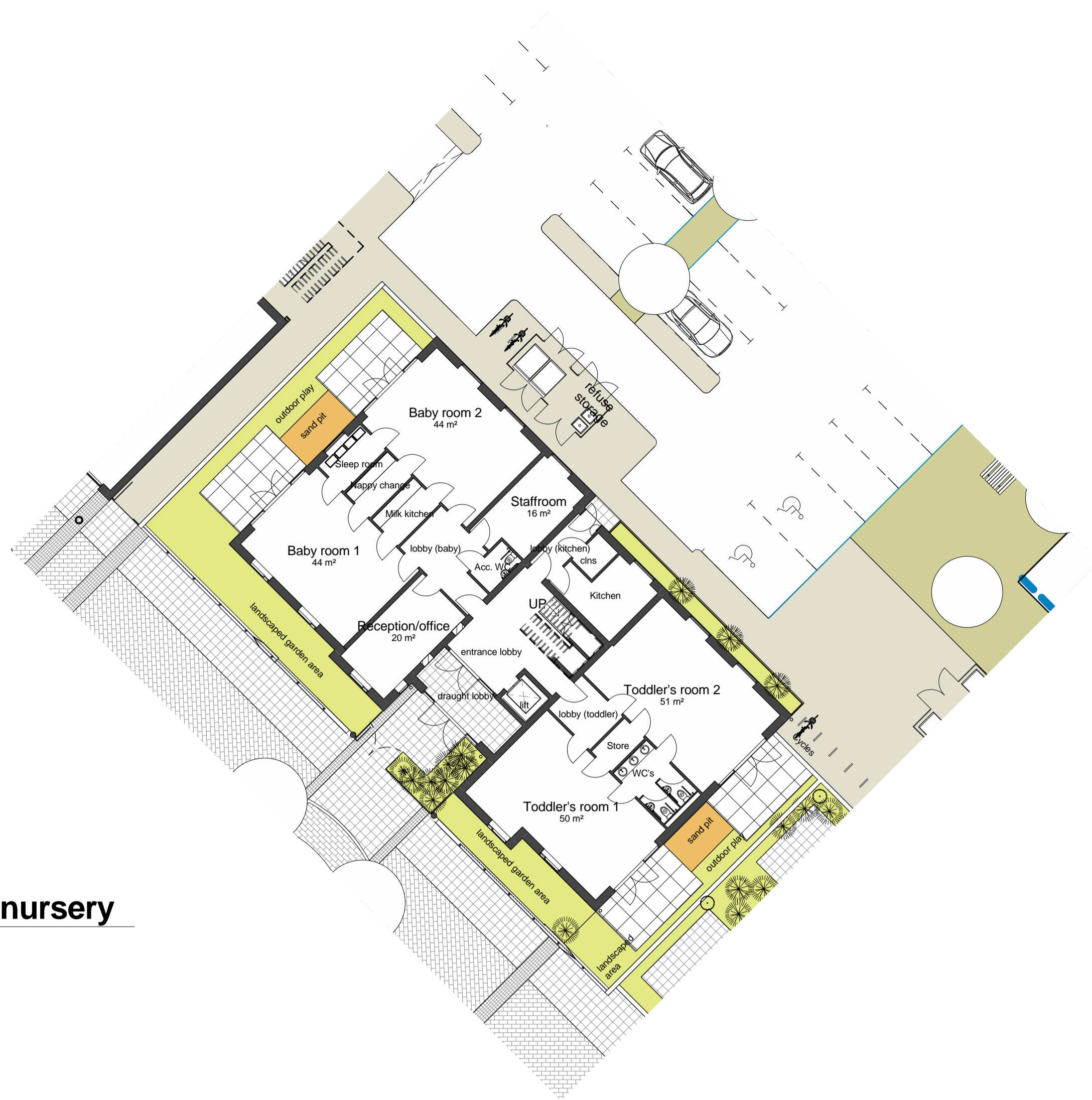
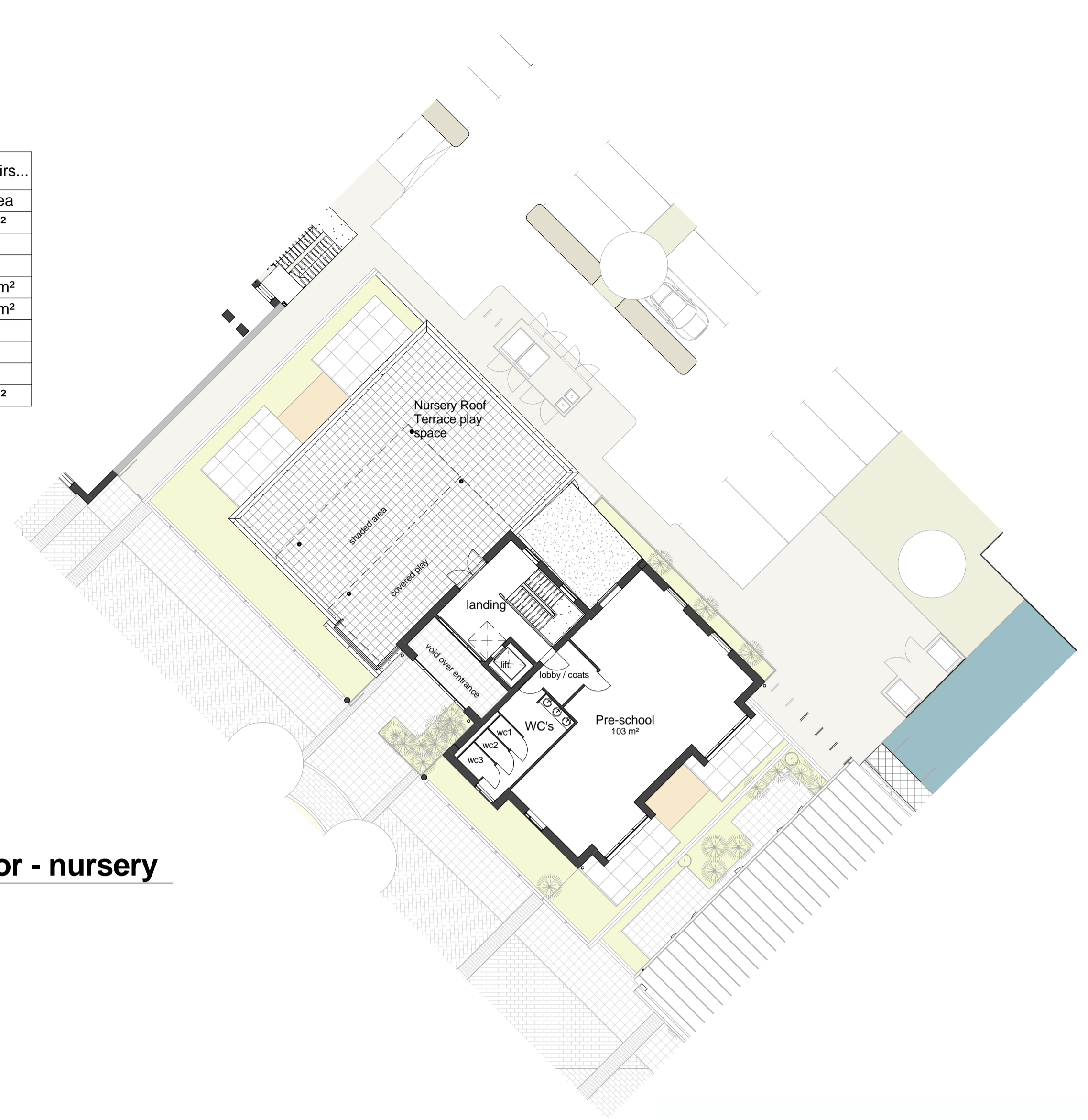


Name	Area
Acc. WC	4 m <sup>2</sup>
Baby room 1	44 m <sup>2</sup>
Baby room 2	44 m <sup>2</sup>
clns	3 m <sup>2</sup>
draught lobby	13 m <sup>2</sup>
entrance lobby	29 m <sup>2</sup>
Kitchen	13 m <sup>2</sup>
lift	3 m <sup>2</sup>
lobby (baby)	13 m <sup>2</sup>
lobby (kitchen)	5 m <sup>2</sup>
lobby (toddler)	8 m <sup>2</sup>
Milk kitchen	6 m <sup>2</sup>
Nappy change	6 m <sup>2</sup>
Reception/office	20 m <sup>2</sup>
Sleep room	6 m <sup>2</sup>
Staffroom	16 m <sup>2</sup>
Store	4 m <sup>2</sup>
Toddler's room 1	50 m <sup>2</sup>
Toddler's room 2	51 m <sup>2</sup>
wc1	2 m <sup>2</sup>
wc2	2 m <sup>2</sup>
WC's	5 m <sup>2</sup>



**1** Ground Floor - nursery  
1 : 200

Name	Area
landing	31 m <sup>2</sup>
lift	3 m <sup>2</sup>
lobby / coats	7 m <sup>2</sup>
Outdoor Play Space	165 m <sup>2</sup>
Pre-school	103 m <sup>2</sup>
wc1	2 m <sup>2</sup>
wc2	2 m <sup>2</sup>
wc3	2 m <sup>2</sup>
WC's	14 m <sup>2</sup>



**2** First Floor - nursery  
1 : 200



**3** Nursery - east elevation  
1 : 200



**4** Nursery - north elevation  
1 : 200



**5** Nursery - south elevation  
1 : 200



**6** Nursery - west elevation  
1 : 200



**7** Nursery entrance

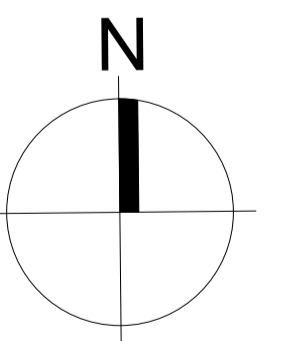


**8** Nursery from south



**9** Key plan Nursery  
1 : 1250

Revisions	
C 11/05/15	Amended to comment
D 30/06/15	Amended to planners comments
E 15/07/15	Amended to comment
F 15/10/15	Planning Submission
G 09/02/16	Revised planning submission
H 17/03/16	Amended to planners comments
I 22/04/16	Minor amendment to site boundary



project name: **Kingsmere, Bicester**  
drawing reference: Nursery layout

job number: M8001  
drawing number: AGA050  
revision: I

status: **Planning**

cid ref: M8001 Bicester Local Centre 22.0 Work Stage 2 - Concept Design 22.50 BM22.51 Central Plan M8001 model planning options 5.rvt

date: MAR 15  
sheet: As indicated @ A1  
checked: ipj

Use figured dimensions only. All levels and dimensions to be checked on site. This drawing is to be read in conjunction with all other relevant drawings and specifications.  
Hunters is a trading name of Hunters & Partners Limited.  
© Hunter & Partners Limited. All rights reserved.

**hunters**

26-28 Hammersmith Grove  
London W6 7HJ  
T 020 8237 9200  
F 020 8741 2814  
mail@hunters.co.uk  
www.hunters.co.uk