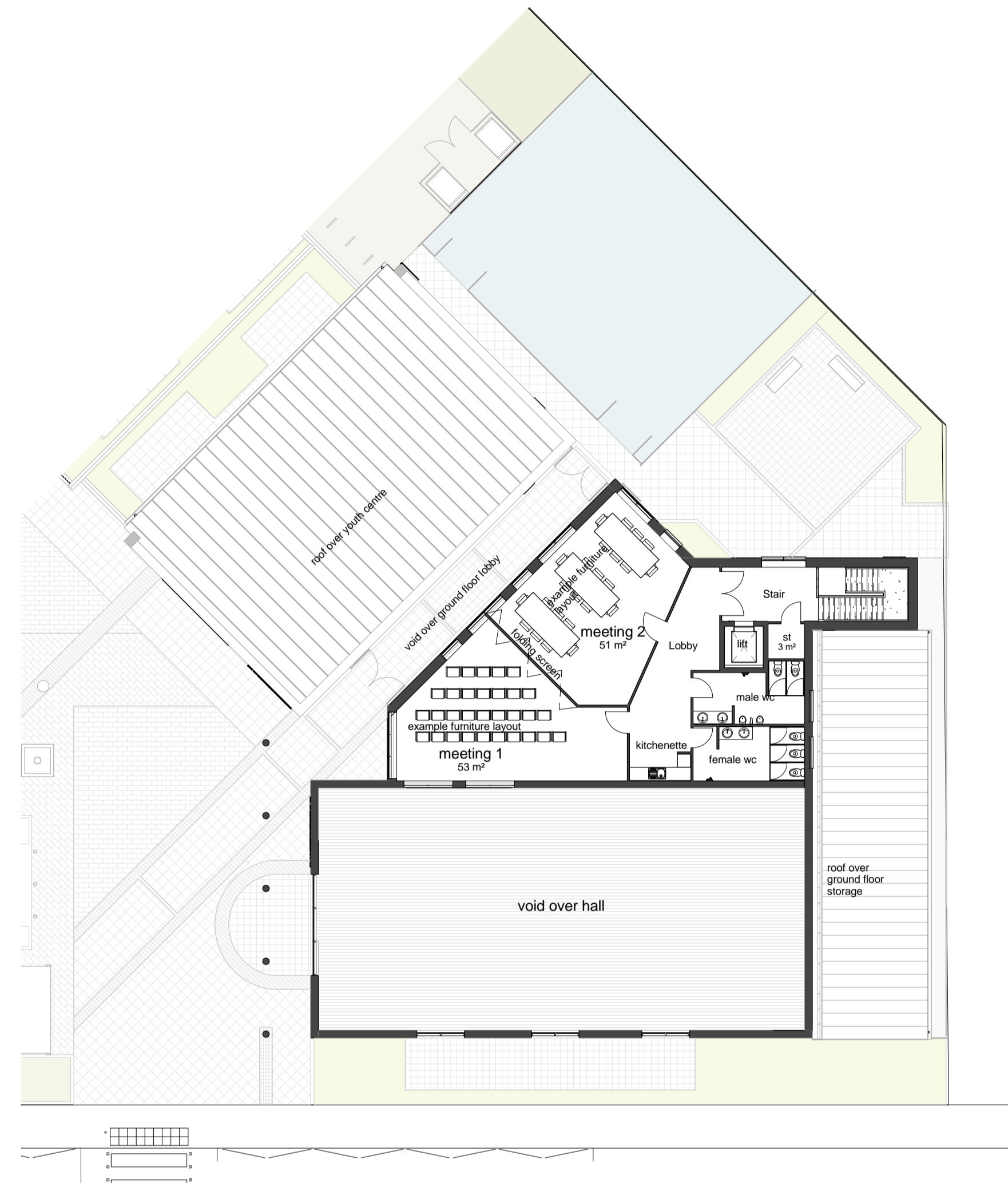


1 Ground Floor - Community centre
1 : 200



2 First Floor - Community centre
1 : 200

Youth Centre Room Schedule	
Name	Area
	2 m ²
Female WC	7 m ²
Male WC	6 m ²
Meeting room	43 m ²
Office	18 m ²
plant	7 m ²
st	2 m ²
store	8 m ²
Youth coffee space	29 m ²
Youth space	46 m ²

Community Centre Schedule - Gnd	
Name	Area
acc. WC	4 m ²
baby change	4 m ²
cafe area / foyer	94 m ²
cleaners	4 m ²
female WC	15 m ²
hall	252 m ²
kitchen	47 m ²
kitchen lobby	5 m ²
lift	3 m ²
male WC	11 m ²
office	14 m ²
plant	9 m ²
stairs	8 m ²
storage	33 m ²
store	3 m ²
WC lobby	9 m ²

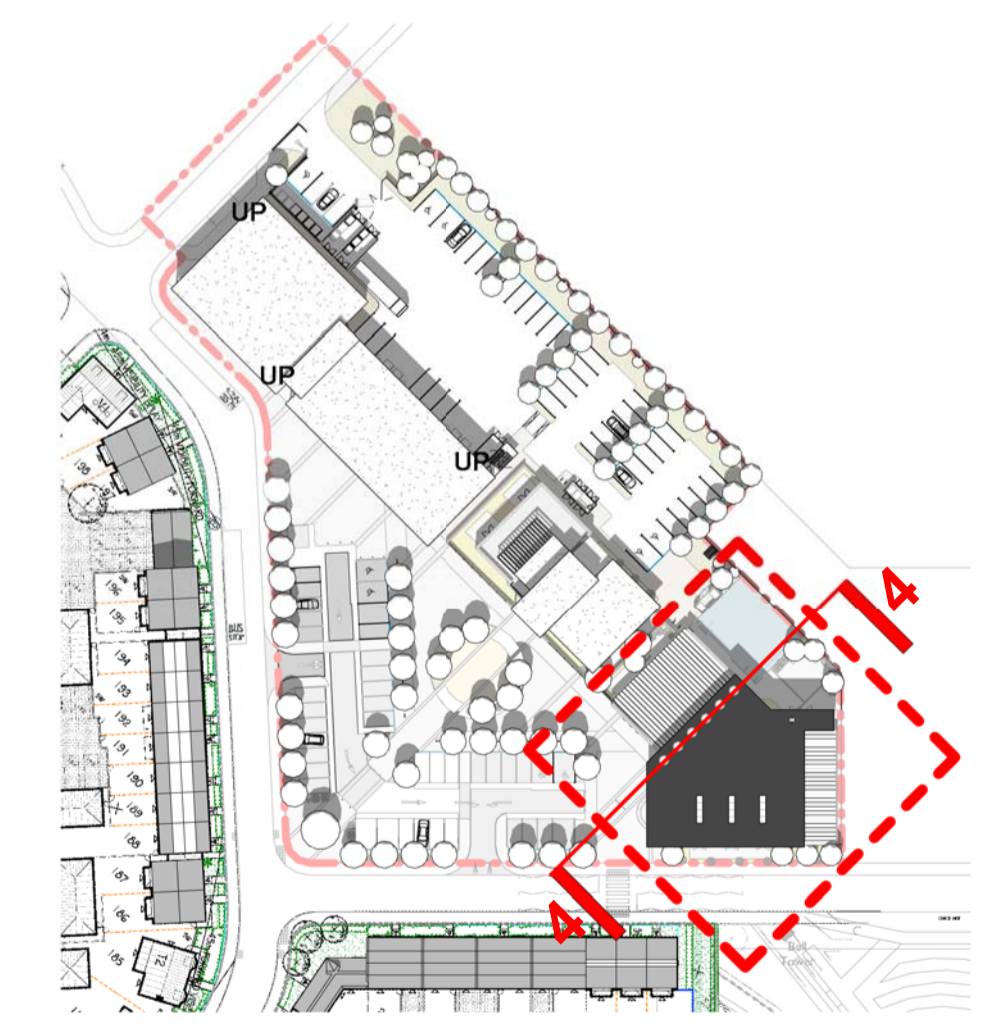
Community Centre Schedule - 1st	
Name	Area
female wc	13 m ²
Lift	3 m ²
Lobby	25 m ²
male wc	13 m ²
meeting 1	53 m ²
meeting 2	51 m ²
st	3 m ²
Stair	22 m ²
void over hall	252 m ²



3 View of the community entrance
1 : 1



4 Section through entrance lobby



5 Key plan Community Centre
1 : 1250

Revisions	
Date	Description
D 30/06/15	Amended to planners comments
E 15/07/15	Amended to comments
F 19/08/15	Revised to comments
G 04/09/15	Minor adjustment to landscaping and internal arrangement to community centre
H 16/09/15	Minor amendment to external seating area & cycle parking
I 15/10/15	Planning Submission
J 09/02/16	Revised planning submission
K 17/03/16	Amended to planners comments

Area:	
Ground floor	
Community centre	= 538m ²
Youth centre	= 175m ²
First floor	
Community centre	= 190m ²
Total	= 903m ²

project name: **Kingsmere, Bicester**
 drawing reference: Community centre
 date: MAR 15
 sheet: AGA060
 scale: As indicated @ A1
 job number: M9001
 drawing number: AGA060
 revision: K
 drawn: ipj
 checked: Checker
 26-28 Hammersmith Grove
 London W6 7HJ
 T 020 8257 9200
 F 020 8741 2814
 email@hunters.co.uk
 www.hunters.co.uk
 Use figured dimensions only. All levels and dimensions to be checked on site. This drawing is to be read in conjunction with all other relevant drawings and specifications.
 Hunters is a trading name of Hunters & Partners Limited.
 © Hunter & Partners Limited. All rights reserved.