

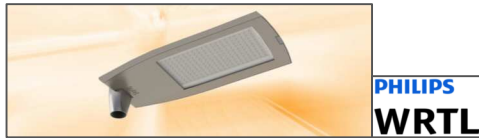
# Lighting Proposal Summary

Project Title: Land North of Green Lane

Drawing Number: 15-DSR087958

Key Account Manager: Leigh Clarke

## Luminaires:



- Micro Luma 20 LED 3.6KLM R5 NW  
candela file 'Micro Luma 1B R5 DS-NW 1 3600 NW LED.ldt'  
1 lamp(s) per luminaire, 3600 initial lumens per lamp  
Maintenance Factor = 0.670, watts per luminaire = 26  
Outreach (from mounting axis to photometric center)= 400 mm  
tilt angle= 5 deg  
mounting height= 5 m  
number locations= 16, number luminaires= 16

## Calculated Results:

Calculation Area  
1881 points at z=0, sp 1.5m by 1.5m  
HORIZONTAL LUX

Average	4.65
Maximum	17.12
Minimum	0.76
Min/Avg(Uo)	0.164
Min/Max	0.044
Coef Var	0.828
UnifGrad	1.95

## Energy Requirements:

Total Project Energy Consumption	416 watts
Anticipated Annual Operating Hours	4000 Hours
Total Annual Running Cost	£183.04 p.a
Total Life-time Running Cost	£4,576.00

*Calculated running costs are based on 0.11pence per Kw hr over the anticipated annual operating hours. Total life-time is estimated at 25 years. Calculated results do not take inflation into account. Results are based on the least energy option available.*

*For final luminaire specification confirmation, quotations and order codes, please contact your local Key Account Manager .*