

SPECIFICATION NOTES - REFER TO DRAWING SCHEDULE

- A) Setting out**
- Planting shall be set out exactly as shown on the drawing, and measured from existing levels. Correct levels shall be set out using level rods on the ground using the ground as a datum. The junction between existing and proposed levels shall be clearly marked and the ground level shall be smoothed and even flowing line. Check that all setting out is correct before planting and planting works.
 - All planting beds shall be a minimum of 100mm wide, unless otherwise specified. The width of the bed shall be marked on the drawing. The ground level shall be smoothed and even flowing line. Check that all setting out is correct before planting and planting works.
- B) Ground preparation**
- Pre-planting herbicide application: Apply a pre-planting herbicide to the site in accordance with the manufacturer's instructions. The herbicide shall be applied to the site in accordance with the manufacturer's instructions. The herbicide shall be applied to the site in accordance with the manufacturer's instructions.
 - General Landscaping: All work shall be done in accordance with the manufacturer's instructions. The work shall be done in accordance with the manufacturer's instructions. The work shall be done in accordance with the manufacturer's instructions.
- C) Planting**
- Planting shall be carried out in accordance with the specification and schedule of materials. The planting shall be carried out in accordance with the specification and schedule of materials. The planting shall be carried out in accordance with the specification and schedule of materials.
 - Planting shall be carried out in accordance with the specification and schedule of materials. The planting shall be carried out in accordance with the specification and schedule of materials. The planting shall be carried out in accordance with the specification and schedule of materials.

KEY

- PROPOSED STANDARD TREE, INCLUDING STAKE AND TIE. SEE SPECIFICATION NOTES A1, B3A, B4, C1A, C1B AND C1C AND E1.
- PROPOSED HEAVY STANDARD TREE, INCLUDING STAKE AND TIE. SEE SPECIFICATION NOTES A1, B3A, B4, C1A, C1B AND E1.
- PROPOSED EXTRA HEAVY STANDARD TREE, INCLUDING STAKE AND TIE. SEE SPECIFICATION NOTES A1, B3A, B4, C1A, C1B AND E1.
- PROPOSED EXTRA HEAVY STANDARD TREE IN PAVING WITH PERMANENT PROTECTION. SEE SPECIFICATION NOTES A1, B3A, B4, C1A, C1B AND E1.
- PROPOSED COMPACT OR BROAD LEAF EVERGREEN TREE, INCLUDING STAKE AND TIE. SEE SPECIFICATION NOTES A1, B3A, B4, C1A, C1B AND E1.
- ROOT BARRIER, 100% SUPPLIED BY APPROVED URSA. CONTRACT TEL: 01880 890 800 OR PLANTLANDS@URSA.CO.UK
- SHRUB AND HERBACEOUS PLANTING, INCLUDING BODENHOLZ SHEET AND BARK MULCH (ACCORDING TO SPECIFICATION. SEE SPECIFICATION NOTES A1-A4, B1-A, B1-B, C1A, C1B AND E1).
- TUFTS, SHRUBS AND HERBACEOUS PLANTING, INCLUDING BODENHOLZ SHEET AND BARK MULCH (ACCORDING TO SPECIFICATION. SEE SPECIFICATION NOTES A1-A4, B1-A, B1-B, C1A, C1B AND E1).
- GROUND COVER PLANTING IN WEED, INCLUDING BODENHOLZ SHEET AND BARK MULCH (ACCORDING TO SPECIFICATION. SEE SPECIFICATION NOTES A1-A4, B1-A, B1-B, C1A, C1B AND E1).
- HEDGE PLANTING, INCLUDING BODENHOLZ SHEET AND BARK MULCH (ACCORDING TO SPECIFICATION. SEE SPECIFICATION NOTES A1-A4, B1-A, B1-B, C1A, C1B AND E1).
- PERGOLA PLANTING, INCLUDING BODENHOLZ SHEET AND BARK MULCH (ACCORDING TO SPECIFICATION. SEE SPECIFICATION NOTES A1-A4, B1-A, B1-B, C1A, C1B AND E1).
- WASHED, ROUNDED, BUFF COLOURED GRAVEL, 20mm MAXIMUM SIZE. SEE SPECIFICATION NOTES A1-A4, B1-A, B1-B, C1A, C1B AND E1.
- WILDOVER SEEDED AREA. REFER TO PLANT SCHEDULE FOR SPECIFICATION OF MIX.
- PLANTING IN WEED, SPRING FLOWERING. REFER TO PLANT SCHEDULE FOR SPECIFICATION OF MIX.
- CLIMBING SHRUBS IN SHRUB BEDS, GRASS PLANTING OR IN PITS. REFER TO PLANT SCHEDULE FOR SPECIFICATION OF MIX.
- CLIMBING SHRUBS IN SHRUB BEDS, GRASS PLANTING OR IN PITS. REFER TO PLANT SCHEDULE FOR SPECIFICATION OF MIX.
- TUFT REINFORCEMENT TO BE GRASSCOTE AVAILABLE FROM COMBINATION OF TUFTS, TEL: 01880 890 800 OR PLANTLANDS@URSA.CO.UK
- BAT BOXES - REFER TO MANUFACTURER'S SPECIFICATIONS.
- BIRD BOXES/SHELTERS - REFER TO MANUFACTURER'S SPECIFICATIONS.
- BIRD BOXES. REFER TO MANUFACTURER'S SPECIFICATIONS.

HEALTH AND SAFETY RISK ASSESSMENT

This Risk Assessment has 2 purposes:

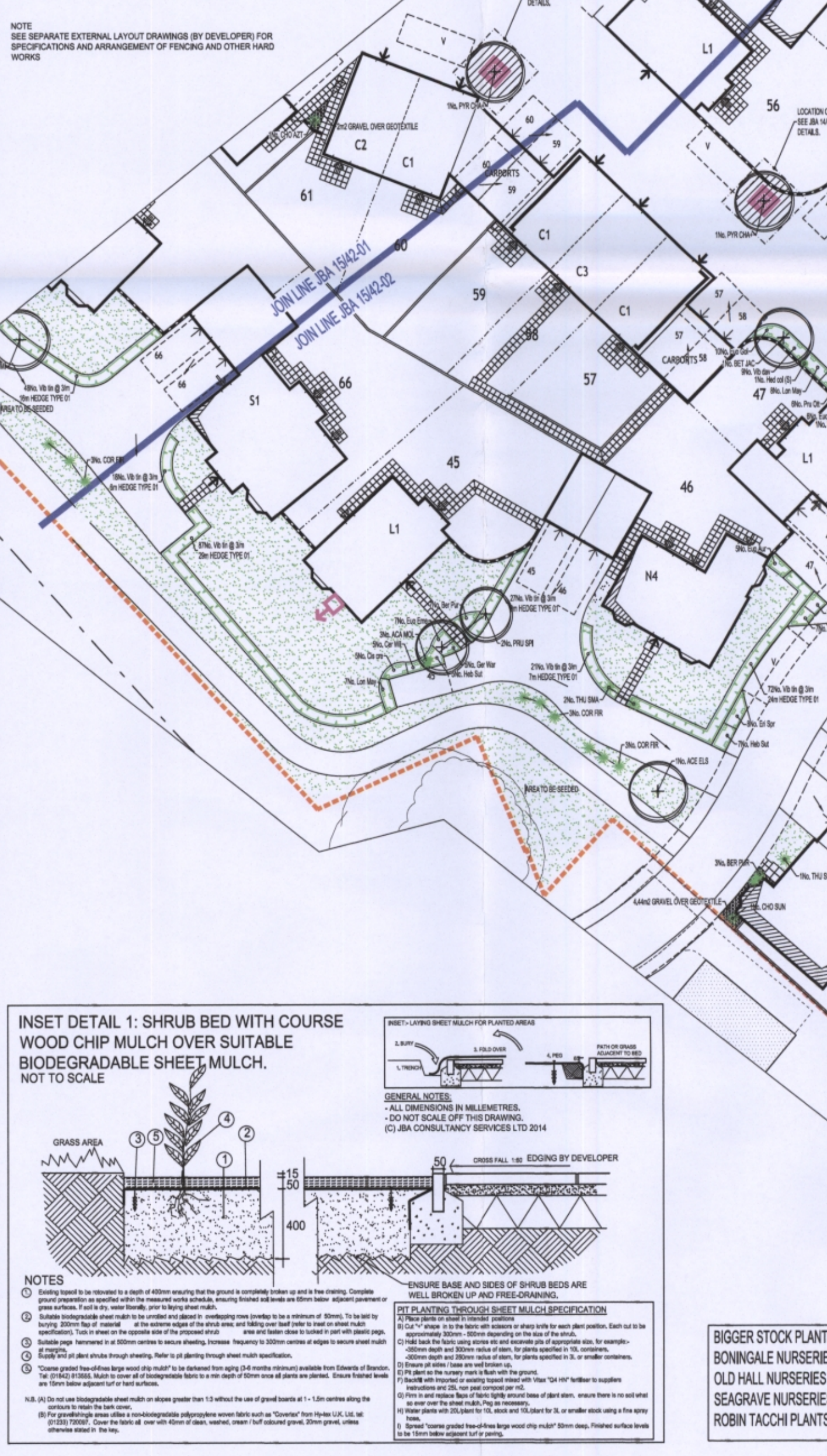
- To identify any significant hazards related to design work by James Blake Associates. A significant hazard being defined as a foreseeable hazard which is not likely to be avoided by a competent contractor or other designer or user, or difficult to manage effectively. This is to be agreed with Regulatory 13 (Requirements of the Designer) of the CD Regulations 1998 (amended 2007).
- To identify any potential hazards which though not related to design work by James Blake Associates, may be more apparent to a Landscape Architectural Consultant than others. The following list is not exhaustive and a certain level of health and safety management is issued (reference to Management of Health and Safety at Work Regs 1999, Provision and Use of Work Equipment Regs 1998, Personal Protective Equipment at Work Regs 2002, Manual Handling Operations Regs 1992 etc).

ITEM	RISK LEVEL	HAZARD/RISK
EXCAVATION, CONSTRUCTION, CONVICTION AND SITE PREPARATION NEAR EXISTING TREES IN AREAS OF THE SITE	HIGH	HAZARD TO SAFETY OF WORKERS, USERS OF ADJACENT LANE AND FUTURE USERS OF THE SITE BY SHAKEN TREES
WORKING NEAR ADJACENT TO DRAINAGE/UNDERGROUND SERVICES	HIGH	HAZARD TO SERVICES AND HAZARD TO SAFETY OF WORKERS
NATIVE HERBS, PERENNIALS AND TREES PLANTING	LOW	HAZARD TO SAFETY OF PEDESTRIANS
USE OF PESTICIDES, HERBICIDES AND FERTILISERS	MEDIUM/HIGH	HAZARD TO SAFETY OF OPERATIVES, GENERAL PUBLIC AND THEIR PETS
USE OF LOOSE MATERIALS SUCH AS GRAVEL OR BARK MULCH ADJACENT TO DRIVEWAYS	LOW	HAZARD TO USERS OF THE SITE IF BLOWN OR STRUCK BY TO BUSES OR TRAMS. IT COULD BECOME A PESTICIDE 319 HAZARD TO VEHICLES
WORKING ON SLOPING GROUND	MEDIUM	HAZARD TO SAFETY OF WORKERS
WORKING ON OR ADJACENT TO THE HIGHWAY	HIGH	HAZARD TO SAFETY OF WORKERS AND HIGHWAY USERS
WORKING NEAR A WATERCOURSE	MEDIUM	HAZARD TO SAFETY OF WORKERS AND HAZARD OF INTERFERENCE BY INDIVIDUALS, PESTICIDES AND OTHER MATERIAL
CONSTRUCTION OF PLAY AREAS	HIGH	HAZARD TO SAFETY OF PLAY AREA USERS

All 17 of JM Consultancy Services Ltd Approved Landscape Contractors is available on request.

GENERAL NOTES FOR THE DEVELOPER

- Any existing trees to be retained, are to be protected by a tree protection fence (TPF) in accordance with BS 5822:2012. The TPF shall be erected prior to any groundworks. The TPF shall be erected prior to any groundworks. The TPF shall be erected prior to any groundworks.
- Groundwork: All groundwork shall be done in accordance with the specification and schedule of materials. The groundwork shall be done in accordance with the specification and schedule of materials. The groundwork shall be done in accordance with the specification and schedule of materials.
- Planting: All planting shall be done in accordance with the specification and schedule of materials. The planting shall be done in accordance with the specification and schedule of materials. The planting shall be done in accordance with the specification and schedule of materials.



SPECIFICATION FOR "COVERTEX" SHEET MULCH FOR GRAVEL AREAS

INTRODUCTION

"COVERTEX" is a woven black polypropylene fabric, 120g/m² which is manufactured in ultraviolet resistant (UV) form. This product is available from the UK, Ltd, PO Box 97, Adlington, Lancashire, Lancs, SK20 7DB, Telephone (01253) 720097.

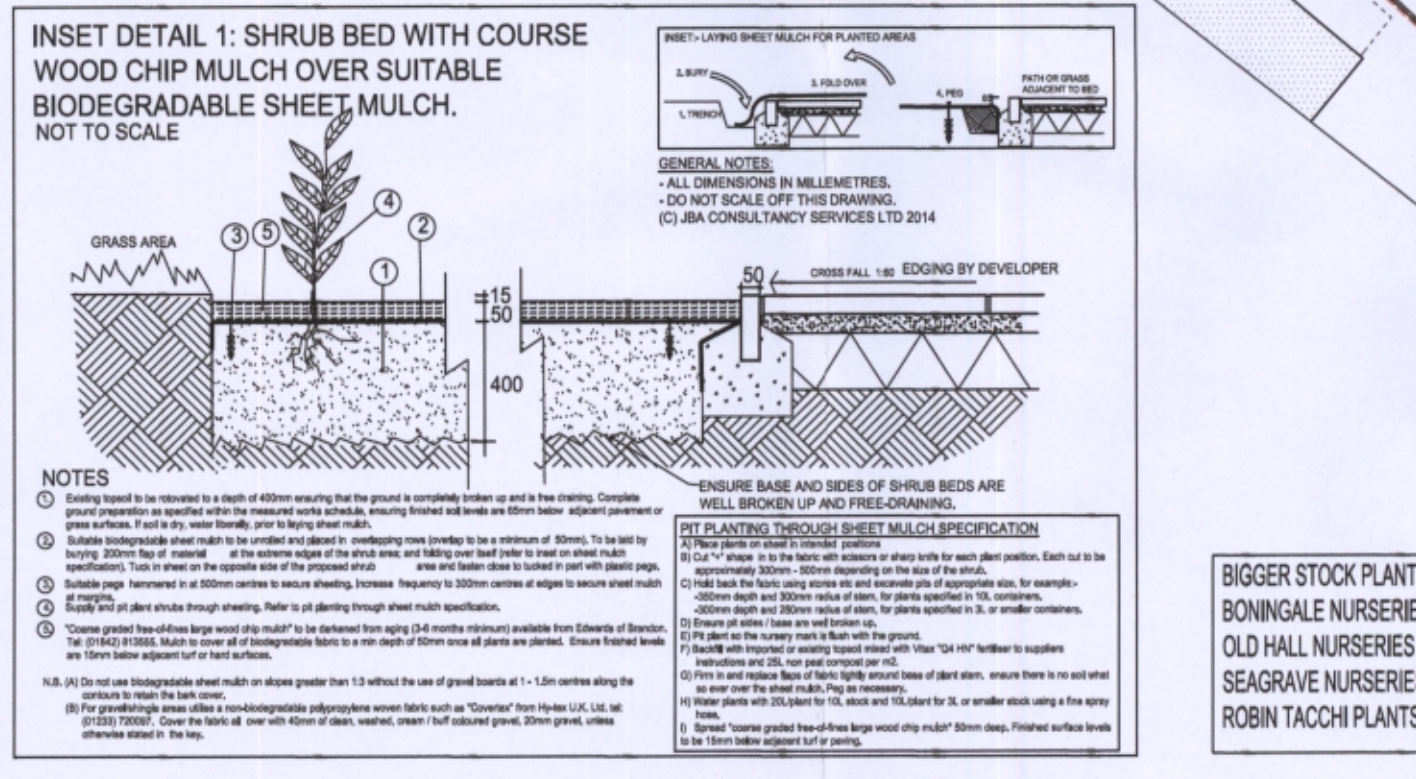
SPECIFICATION

- Prepare ground to ensure it is even and firm. For any planted or seeded patches and areas the soil shall be lightly and evenly cultivated and tamped.
- Ensure that the finished soil level is even at least 50mm below adjacent pavement or grass levels to receive sheet mulch and gravel. For sloping areas 600mm of bed depth is required. For level areas or grass areas 300mm of bed depth is required.
- Place "Covertex" sheet mulch over soil to be planted. Level materials, including gravel, should be placed over the sheet mulch. The sheet mulch should be placed over the soil to be planted. The sheet mulch should be placed over the soil to be planted.
- Place 200mm flag of material (from the back - see diagram below) at the edge of the sheet mulch. This will be used to secure the sheet mulch to the ground. The sheet mulch should be placed over the soil to be planted. The sheet mulch should be placed over the soil to be planted.
- Place any specimen plants on beds in intended positions.
- Put the fabric with gravel at 1" depth for each plant position, 400mm apart.
- Put the fabric with gravel at 1" depth for each plant position, 400mm apart.
- Once all the plants are planted, cover the fabric all over with 40mm of clean, washed, cream/buff coloured gravel, 20mm gauge.
- Finally, water the gravel thoroughly ensuring that each plant receives 2 gallons of water if the soil is dry or in warm weather conditions. Otherwise water 20L/m².

INSET - LAYING SHEET MULCH FOR GRAVEL AREAS

1. TRUCK
2. BURY
3. FOLD OVER
4. RES

DO NOT USE HYPER FABRIC ON SLOPES GREATER THAN 1:4 WITHOUT THE USE OF GRASS, BONDS AT 1 - 1.5m CENTRES ALONG THE CONTOURS TO RETAIN THE GRAVEL.



BIGGER STOCK PLANTS AVAILABLE FROM:

BONVILLE NURSERIES TEL: 01902 376500
OLD HALL NURSERIES TEL: 0115 965 3303
SEARVALE NURSERIES TEL: 01509 621 300
ROBIN TACCH PLANTS TEL: 01963 681 312

FOR PLANT SCHEDULE REFER TO DRAWING JBA 14/ 52-03
FOR LAP DETAILS REFER TO DRAWING JBA 14/ 52-04 & 05

SPECIFICATION FOR HEDGE PLANTING

SPECIFICATION FOR ORNAMENTAL HEDGE PLANTING - LARGE GROWING SPECIES

Hedges containing small ornamental species shall be planted in a single straight row at a density of 3 plants per linear metre. The row shall be planted in the centre of the bed. Hedge plants to be 3, container green stock, 400-500mm height and spread unless otherwise stated.

SPECIFICATION FOR ORNAMENTAL HEDGE PLANTING - MEDIUM GROWING SPECIES

Hedges containing small ornamental species shall be planted in a single straight row at a density of 3 plants per linear metre. The row shall be planted in the centre of the bed. Hedge plants to be 3, container green stock, 300-400mm height and spread unless otherwise stated.

OUTLINE LAYOUT PROPOSALS

This drawing is for comment only and is not to be used for tender or construction. Planting to be detailed upon request.

LANDSCAPE PROGRAMMING

DATE OF NATIONAL PLANT SHORTAGE: PLANTS MAY TAKE UP TO 4 WEEKS TO BE DELIVERED EARLY LEAD-TIME FOR SOFT LANDSCAPE IS ESSENTIAL.

NO.	PLANT	QUANTITY	DATE	STATUS	REMARKS
1
2
3
4
5
6
7
8
9
10

Blake Associates

LANDSCAPE ARCHITECTURE & ARBORECUCLTURE & ECOLOGY