

KEY

Soft Landscaping

16/00055/Disc.

- PROPOSED STANDARD TREE, INCLUDING DOUBLE STAKE AND TIE. SEE SPECIFICATION NOTES A1, B2-3, B5, C1-4, D1-2 AND E1.
- SHRUB AND HERBACEOUS PLANTING, INCLUDING BIODEGRADABLE SHEET AND BARK MULCH (ACCORDING TO SPECIFICATION). SEE SPECIFICATION NOTES A1-2, B1-3, C1-3, D1-2 AND E1.
- GROUND COVER PLANTING IN MIXES, INCLUDING BIODEGRADABLE SHEET AND BARK MULCH (ACCORDING TO SPECIFICATION). SEE SPECIFICATION NOTES A1-2, B1-3, C1-3, D1-2 AND E1.
- HEDGE PLANTING, INCLUDING BIODEGRADABLE SHEET AND BARK MULCH (ACCORDING TO SPECIFICATION). REFER TO HEDGE SCHEDULES ON PLAN AND THE SCHEDULE OF QUANTITIES. SEE SPECIFICATION NOTES A1-2, B1-3, B5, C1-3, D1-2 AND E1.
- CULTIVATED TURF UNLESS OTHERWISE STATED ON PLAN. SEE SPECIFICATION NOTES B4, C5 AND E1.

Hard Landscaping

- FOOTPATHS WITHIN OPEN SPACE AREAS AND PLAY AREA TO BE BITUMEN MACADAM TO ENGINEERS SPECIFICATION.
- PRE-CAST CONCRETE EDGING 50 x 150mm, SQUARE/FLAT TOPPED, LAID FLUSH TO SURFACE FINISH LEVEL.
- WET POUR SAFETY SURFACE (BLUE), DEPTH TO ENGINEERS SPECIFICATION. AVAILABLE FROM PLAYSAFE SURFACES LTD TEL: 0161 975 6242 OR SIMILAR AND APPROVED.
- WET POUR SAFETY SURFACE (RED), DEPTH TO ENGINEERS SPECIFICATION. AVAILABLE FROM PLAYSAFE SURFACES LTD TEL: 0161 975 6242 OR SIMILAR AND APPROVED.
- BOW TOP RAILING, TO BE GALVANISED AND POWDER COATED BLACK, 900mm HIGH.
- KNEE RAIL FENCE, TO BE A HEADER 'POST AND RAIL' SOLUTION AT KNEE HEIGHT (400mm HIGH), RAIL TO BE GALVANISED ROUND RAIL, POST TO BE TREATED SOFT WOOD, TOP TO BE DOMED.
- SELF CLOSING STEEL GATE IN BLACK
- "NO DOGS" SLAB 6000-001, 450 x 450 x 65mm, LAID FLUSH WITH ADJACENT SURFACING, AVAILABLE FROM PARAGON PAVING SIGNS AT WICKSTEED PLAYSAPES TEL: 01536 517028 OR SIMILAR AND APPROVED.

Play and Furniture

- 6No. SMART POLYURETHANE 77% RECYCLED MATERIAL SEATS 620mm IN DIAMETER, 450mm HIGH ABOVE GROUND LEVEL.
- 3No. TRAFFIC RED (RAL 3020), 3No. OLIVE GREEN (RAL 6003), AVAILABLE FROM BOLLARDS INTERNATIONAL TEL: 01485 601145) OR SIMILAR AND APPROVED.
- LITTER BIN TO BE LIVERPOOL LITTER BIN (LVR520 PPC) FINISH TO BE POWDER COATED BLACK, AVAILABLE FROM FURNITUBES INTERNATIONAL TEL: 020 8378 3200 OR SIMILAR AND APPROVED.
- JOHNSON 'LIFT ASSIST' SEAT (BX45 2095) FRAME COLOUR RAL 9005, AVAILABLE FROM BROXPAP LTD TEL: 0844 800 4085 OR SIMILAR AND APPROVED
- EARTH MOUNDS TO BE FORMED AROUND PLAY AREA, AS PER CONTOURS AND SPOT HEIGHTS ON PLAN.
- MEGREZ TODDLER GROUP SWING (SB2042) AVAILABLE FROM MIRACLE TEL: 01604 658240 OR SIMILAR AND APPROVED.
- 3 WAY SPRINGER (SB5019) AVAILABLE FROM MIRACLE TEL: 01604 658240 OR SIMILAR AND APPROVED.
- SARGAS ACCESSIBLE ROUNDABOUT (SB3055) AVAILABLE FROM MIRACLE TEL: 01604 658240 OR SIMILAR AND APPROVED.
- ALICIA MULTI-PLAY UNIT (SB6033) AVAILABLE FROM MIRACLE TEL: 01604 658240 OR SIMILAR AND APPROVED.
- RUKBAT ROTATING SAIL SPRINGER (SB3053) AVAILABLE FROM MIRACLE TEL: 01604 658240 OR SIMILAR AND APPROVED.
- PHACT SPINNER (SB3045) AVAILABLE FROM MIRACLE TEL: 01604 658240 OR SIMILAR AND APPROVED.

NOTE
SEE SEPARATE EXTERNAL LAYOUT DRAWINGS (BY DEVELOPER)
FOR SPECIFICATIONS AND ARRANGEMENT OF FENCING AND
OTHER HARD WORKS

REV.	DATE	INITIALS	DETAILS
A	27/01/2016		DRAWING AMENDED TO LPA COMMENTS RECEIVED 19/01/2016 & 26/01/2016

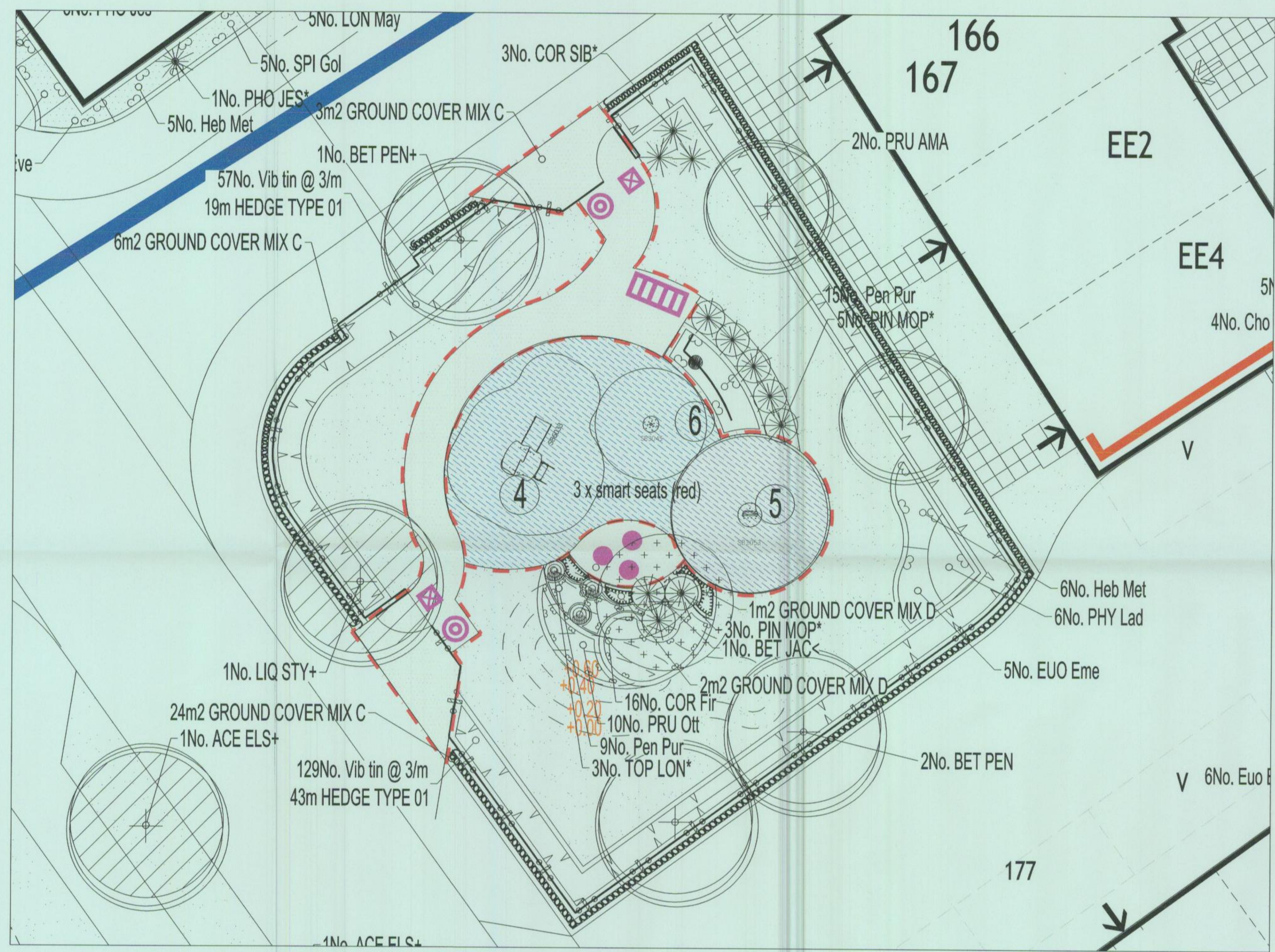
CLIENT	LINDEN HOMES	DWG. TITLE	DETAILED SOFT AND HARD LANDSCAPE DETAIL FOR LAPs
SITE	KINGSMERE, BICESTER		
DRG BY	JBA	CHECKED	JBA
WD	JBA	AUTHD	JBA
SCALE	1:50@A1	DATE	DECEMBER 2015
DWG NO.	JBA 15/42 05	REV.	A

GENERAL NOTES
-ALL DIMENSIONS IN MILLIMETRES
-DO NOT SCALE OFF THIS DRAWING
-ALL DIMENSIONS TO BE CHECKED ON SITE
(C)JBA CONSULTANCY SERVICES LTD 2016

FOR PLANT SCHEDULE REFER TO
DRAWING JBA 14/ 52-03

LANDSCAPE PROGRAMMING
DUE TO NATIONAL PLANT SHORTAGE: PLANTS MAY TAKE UP
TO 4 WEEKS TO BE DELIVERED. EARLY LEAD-IN FOR SOFT
LANDSCAPE IS ESSENTIAL.

FOR DRAWING LOCATION
SEE JBA 15/42 04



Will Dutch - 08/12/2015 - X:\D-L\Linden Homes\Bicester_15-42\Drawings\In Progress\JBA 15-42-01 REV_H_Detailed Soft for plots and PDS_Bicestering

James Blake Associates

HEAD OFFICE
The Black Barn, Hall Road, Lavenham, Suffolk, CO10 9DX
Tel: (01787) 248216 Fax: (01787) 247264
jamesblake@jba-landscap.com www.jba-landscap.com

LANDSCAPE ARCHITECTURE • ARBORICULTURE • ECOLOGY