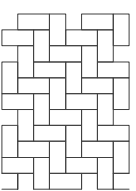
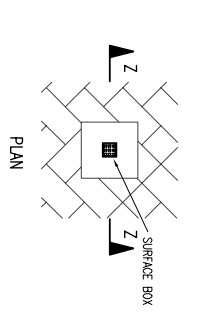
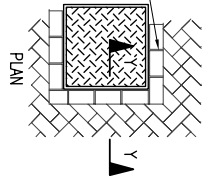
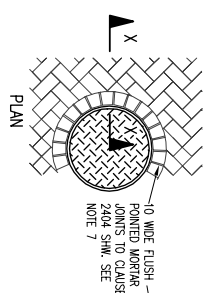
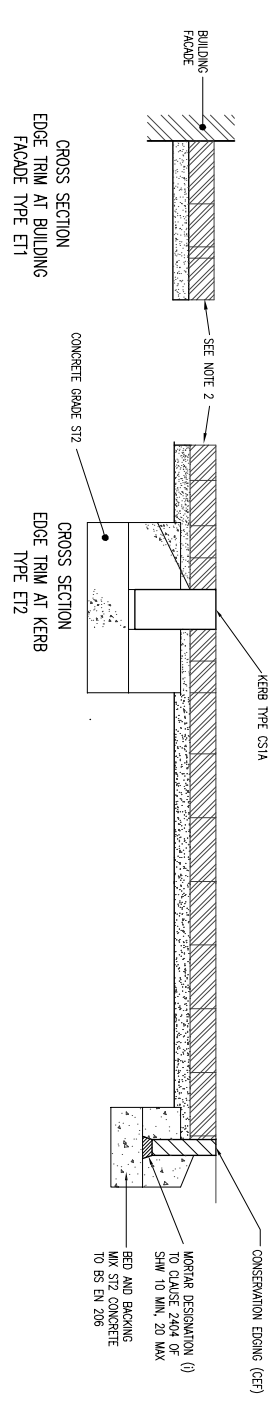
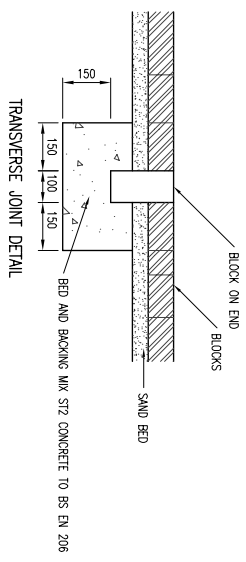
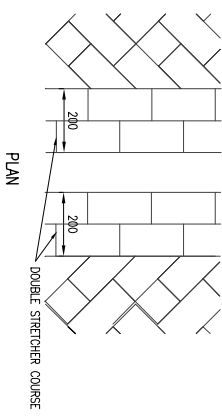
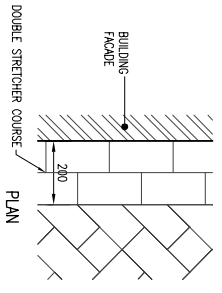
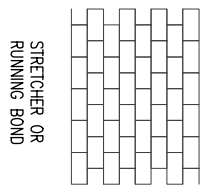
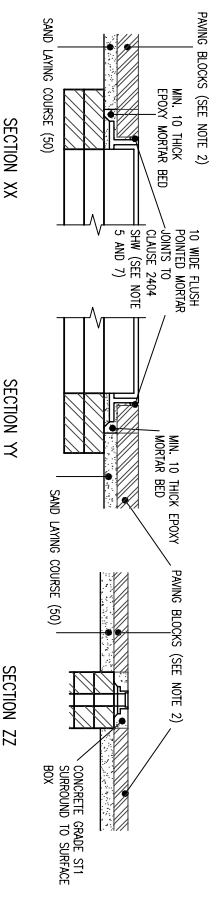


DO NOT SCALE

- NOTES:
1. ALL DIMENSIONS ARE IN MILLIMETRES UNLESS OTHERWISE STATED.
 2. ALL PAVING BLOCKS SHALL BE 200X100X60MM THICK CONCRETE BLOCKS UNLESS INDICATED OTHERWISE.
 3. CONCRETE BLOCKS ARE TO COMPLY WITH THE REQUIREMENTS OF BS EN 1338:2003.
 4. BLOCKS SHOULD BE LAID IN ACCORDANCE WITH BS 7533 PART 1:2001.
 5. WHERE THE FRAMING OF BLOCKS IS NECESSARY, PORTIONS OF LESS THAN ONE THIRD OF AN ENTIRE BLOCK SHALL NOT BE Laid, INSTEAD THE PATTERN SHOULD BE ALTERED TO EMULB LARGER PIECES OF BLOCK TO BE USED.
 6. IF THE DEPTH OF AN ACCESS COVER FRAME PROHIBITS BLOCKS FROM BEING LAID UP CLOSE TO THE FRAME IT SHOULD BE SURROUNDED IN CONCRETE GRADE ST1 UP TO FINISHED GROUND LEVEL.
 7. BLOCKS BEDDED ON EPOXY MORTAR SHOULD HAVE THE TOP 20mm OF THEIR VERTICAL JOINTS RAKED OUT AND RE-POINTED WITH DESIGNATION (I) CEMENT/SAND MORTAR TO CLAUSE 2404.
 8. ALL CLAUSE NUMBERS REFER TO SPECIFICATION FOR HIGHWAY WORKS, LATEST EDITION.



HERRINGBONE BOND
THE RECOMMENDED PATTERN FOR VEHICULAR TRAFFIC.



STRETCHER OR RUNNING BOND

REV	DATE	BY	DESCRIPTION	CHK	APP
C	06.12.2011	PB	OCC COMMENTS INCORPORATED	PB	AB
B	14.11.2011	PB	TRANSVERSE JOINT DETAIL TITLE CHANGED	SJ	SJ
A	08.11.2011	PB	FIRST ISSUE	SJ	SJ

DRAWING STATUS:
FOR TECHNICAL APPROVAL



WSP

Mountbatten House, Basing View, Basingstoke, Hampshire RG21 4JH
Tel: +44 (0)1256 318800 Fax: +44 (0)1256 318700
<http://www.wspgroup.com>

CLIENT: DAVID WILSON HOMES (MERCIA)

ARCHITECT:

PROJECT: KMB KINGSMERE
BIGESTER, OXFORDSHIRE

TITLE: BLOCK PAVING - LAYING DETAILS
AND EDGE DETAILS

SCALE @ A4	CHECKED	APPROVED
N.T.S	PB	AB

DATE	DESIGNED BY	DATE
	PB	December 2011

PROJECT No	DRAWING No	REV
11013031	3031KMB/SD/20	C