



TREES HT 12m

TREES HT 12m

**Key to Schedule of Trees**

<b>Column Heading</b>	<b>Explanation</b>
Tree No.	Unique number corresponding with number on plan
Species	English names
Ht (m)	Height in metres
Branch Spread	Crown width in metres to cardinal points of the compass
Stem Dia	All measurements conform to Annex C of BS 5817:2012
	Single stem - Stem diameter in centimetres measured at 1.5m above ground level
	Multi-stemmed tree with 2 to 5 stems - Diameter of each stem
	Multi-stemmed tree with more than 5 stems - Average stem diameter and number of stems
Height of crown clearance	Height in metres between the ground and underside of canopy
Height of fine major branches	Height from ground level to base of fine major branches and the approximate direction of growth
Abbreviations as suffix to a dimension	Suffix 'v' denotes an estimated dimension
Age Class	Age Class definitions: Y = Young S = Semi-mature I = Fully mature M = Mature O = Over-mature
Category grading and Estimated remaining Contribution (yrs)	Summary of BS 5837:2012 categorisation: 1. Trees unsuitable for retention U = those in such a condition that they cannot realistically be retained as living trees in the context of the current land use for longer than 10 years 2. Trees to be considered for retention A1, 2 or 3 = trees of high quality (substantial contribution >40 yrs) B1, 2 or 3 = trees of moderate quality (significant contribution >20 yrs) C1, 2 or 3 = trees of low quality (but adequate, < 10 yrs or young trees - until new planting can be established) Useful estimated remaining contribution of the tree or tree group
Condition	Brief description including physiological and structural defects
Tree Works	Works required to be undertaken to the trees to facilitate the construction of remedial a defect encountered during the survey
Root Protection Radius	Radius of minimum root protection area in metres calculated from section 4.6 and Annex D
Root Protection Area	Total area of minimum root protection area extrapolated from root protection radius

- Key:**
- Existing site features
  - Proposed structures
  - Trees retained
  - Trees removed
  - 2.0m high barrier as detail in Fig 3
  - Minimum extent of no-dig construction. Actual deployment may be greater.
  - Area of ground protection

**SURVEY OF TREES AT GREEN LANE, CHESTERTON**

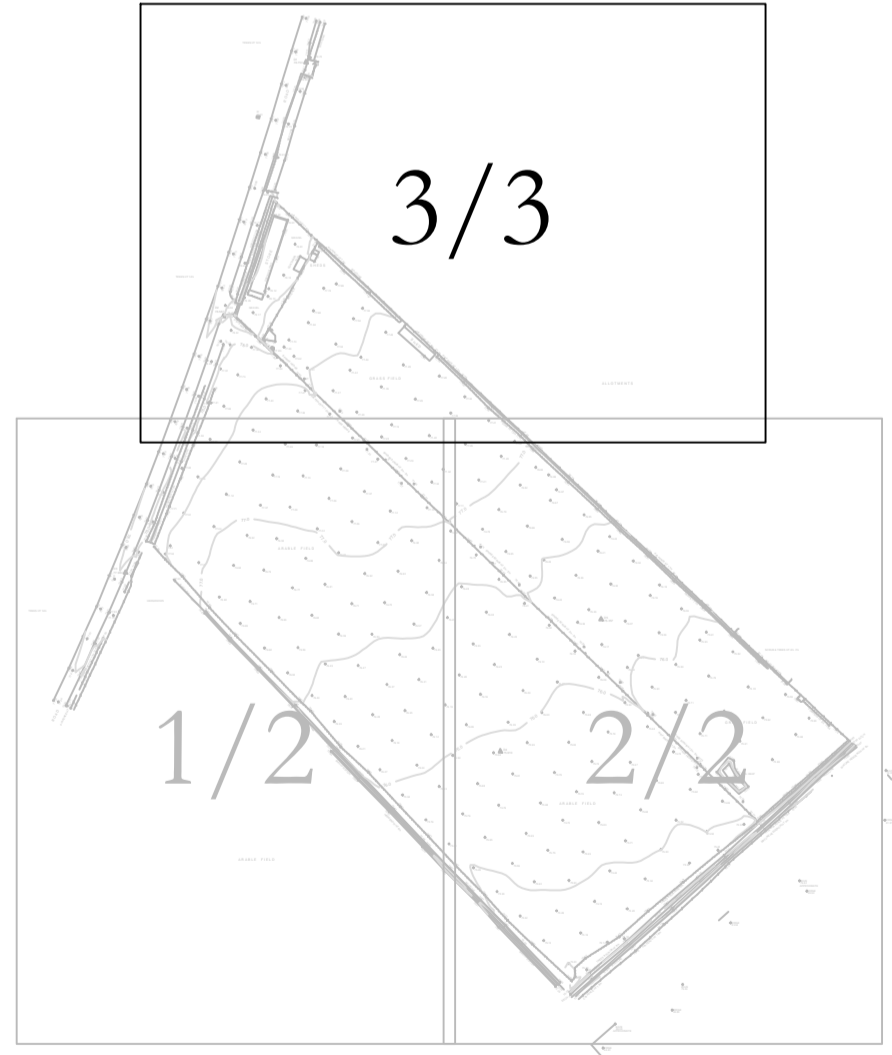
Tree No.	Species	Ht (m)	Branch Spread (m)				Stem diameters (cm)					More than 5 stems	No. stems	Height of fine major branches (m) and direction	Category grading	Condition Physiological / Structural	Tree Works to BS 3998	Root protection radius (m)	Root protection area sq m				
			N	E	S	W	Single Stem	Stem 1	Stem 2	Stem 3	Stem 4									Stem 5			
1	Pair of Ash	7av	3av	<23										1	1W	Y	C2	>10	Growing at edge of road. Tree to south multi-stemmed from ground level with tight union susceptible to failure. Some deadwood present.	2.76	24		
2	Ash	10	4	5	3	6	31	31							1	3NW	MI	C2	>10	Contributing to line of trees. Twin-stemmed from ground level with tight union up to circa 1 metre above ground level susceptible to failure. Large pocket of decay and cavity present on south face of trunk at circa 0.3 metres above ground level. Old pruning wounds present throughout crown with pockets of associated decay. Large deadwood present.	5.26	87	
3	Ash	10	8	7	6	7								22	1	1N	MI	C2	>10	Multi-stemmed from ground level with tight union therein susceptible to failure. Large pockets of decay present at base of stem within central area of trunk. Small pockets of decay present throughout crown possibly associated with previous branch removal. Large deadwood present.	6.98	133	
4	Hawthorn	5	4	1	3	3								10	14	0		MI	C2	>10	Contributing to line of trees. Multi-stemmed from ground level.	4.49	63
5	Group of Ash	13av	7av											<25	6	2	2N	MI	C2	>10	Contributing to line of hedgerow trees. Heavily dead in dense ivy preventing any inspection of multi-stemmed union. Multi-stemmed from circa ground level with tight union therein susceptible to failure. Small deadwood present throughout with small pockets of associated decay. Small deadwood present throughout.	7.35	170
6	Ash	9	6	4	5	6	21	25	8	20e					3	4NW	MI	C2	>10	Contributing to hedgerow. Multi-stemmed from ground level with tight union therein susceptible to failure. Ivy present preventing accurate measurement of stem. Large growing branch with large wound present to northwest of crown at circa 4 metres above ground level. Large pocket of decay on smaller stem to the northeast at circa 0.3 metres above ground level. Small deadwood present throughout.	4.69	69	
7	Hedgerow of predominantly Hawthorn, Blackthorn, Dog Rose, Prunella, Elderberry	5av	2av	10av										0			MI	C2	>10	Providing screening of site from surrounding arable field. Ivy present throughout much of the hedgerow preventing thorough inspection. Small pockets of basal decay present in many stems, some having failed. Some deadwood present.	1.20	5	
8	Group of Ash	9av	5av											<20	6	3	4N	MI	C2	>10	Contributing to hedgerow. Heavily dead in dense ivy preventing thorough inspection. Multi-stemmed from ground level with tight union therein susceptible to failure.	5.88	109
9	Group of Ash	8av	4av											15	6	3		MI	C2	>10	Contributing to hedgerow. Multi-stemmed from ground level with tight union therein susceptible to failure. Ivy present preventing thorough inspection. Small deadwood present throughout.	4.41	61
10	Pair of Ash	8av	4av											15	6	4	3NE	MI	C2	>10	Growing amidst dense Blackthorn preventing thorough inspection of base. Multi-stemmed from ground level with tight union therein susceptible to failure. Ivy present preventing accurate measurement of stem. Large growing branch with large wound present to northwest of crown at circa 4 metres above ground level. Large pocket of decay on smaller stem to the northeast at circa 0.3 metres above ground level. Small deadwood present throughout.	4.41	61
11	Ash	7	4	4	3	4								15	7	3	4N	MI	C2	>10	Growing amidst dense Hawthorn preventing thorough inspection of base. Multi-stemmed from circa 0.2 metres above ground level with tight union therein highly susceptible to failure. Large deadwood present.	4.76	71
12	Pair of Ash	8av	3av	<20	<20	<20	<20							4	2NW	MI	C2	>10	Contributing to hedgerow. Multi-stemmed from ground level with tight union therein susceptible to failure. Ivy preventing thorough inspection. Small deadwood present throughout.	4.80	72		
13	Sycamore	10	4	3	4	3	20e	20e	20e					4	3E	MI	C2	>10	Growing amidst dense Bramble and Hawthorn preventing accurate measurement. Multi-stemmed from 0.2 metres above ground level. Small deadwood present throughout.	4.16	54		
14	Ash	9	5	3	3	4	10e	15e	25e	16				4	1SE	MI	C1	>10	Contributing to hedgerow. Multi-stemmed from ground level. Crossing stems from circa 1.4 to 2 metres above ground level resulting in an estimated diameter. Ivy preventing accurate measurement of three stems. Small deadwood present throughout.	4.17	55		
15	Ash	14	7	6	5	7	28	30						4	4W	MI	B2	>20	Twin-stemmed from circa 1 metre above ground level with tight union therein susceptible to failure. Growing to north of older Field Maple coppice stump. Small deadwood present throughout.	4.92	56		
16	Field Maple	15	6	5	5	7								<30	8	4	3W	MI	B2	>20	Contributing to hedgerow. Possibly an old coppice stump about to regrow. Multi-stemmed from ground level with tight union therein susceptible to failure. Ivy present on one large stem to north preventing thorough inspection. Tree consisting mainly of two large stems with 6 smaller stems of circa 20cm in diameter. Small deadwood present.	10.18	326
17	Field Maple	11	6	7	6	8	18	23	20	30e				2	2W	MI	B2	>20	Multi-stemmed from ground level possibly growing from old coppice stump. Large pocket of decay within central area of stump. Ivy present. Growing amidst dense Dog Rose and Blackthorn preventing accurate measurement of two stems to east. Small pocket of decay present at circa 3 metres above ground level on stem to west. Small deadwood present throughout.	5.57	97		

18	Mixed species hedgerow	10av	7av	<30										0	2W	MI	B2	>20	Providing screening of site of residential properties to east. Hedgerow consists of Hawthorn, Field Maple, Goat Willow, Hazel, Dog Rose, Blackthorn, Elderberry all growing within a 30 metre section. Some stems heavily dead in ivy with some stem failure having occurred. Large pockets of decay associated with previous branch loss throughout. Growing amidst dense under thicket of Bramble preventing thorough inspection of many stems. Large deadwood present throughout.	3.60	41			
19	Pair of Field Maple	15av	8av											<35	6	0	2W	MI	B2	>20	Visually significant contribution to tree belt. Multi-stemmed from ground level with tight union therein susceptible to failure. Possibly originates from old coppice stump. Large stem to southeast of crown has split main fork with subsequent coppice growth. Significant loss on many stems with heavy and loading of branches. Ivy throughout preventing further inspection.	10.29	333	
20	Pair of Field Maple	13av	7av											<30	6	0	2N	MI	B2	>20	Visually significant contribution to tree belt. Multi-stemmed from 0.3 metres above ground level with tight union therein susceptible to failure. Possibly growing from old coppice stump. Heavily dead in ivy preventing thorough inspection. Some stems have significant leaf loss, heavy end loading of branches. Large deadwood present throughout.	8.82	244	
21	Sycamore	12	6	5	5	6								23	38		4	3NW	MI	B2	>20	Contributing to tree belt. Twin-stemmed from circa 0.5 metres above ground level with tight union therein susceptible to failure. Stem to the east heavily dead in dense ivy preventing thorough inspection. Some deadwood present throughout.	5.33	89
22	Lime	9	4	3	3	4	25e							1	2N	Y	C1	>10	Heavily dead in ivy preventing accurate measurement and thorough inspection. Multi-stemmed from circa 2 metres above ground level. Some crossing branches present throughout.	3.00	28			
23	Pair of Field Maple	13av	7av											25e	6	0	2W	MI	B2	>20	Contributing to tree belt along boundary. Multi-stemmed from circa 0.5 metres above ground level with tight union therein susceptible to failure. Possible growing from old coppice stump with small pockets of basal decay therein. Heavily dead in dense ivy preventing thorough inspection of fork union and crown. Some deadwood present throughout.	7.35	170	
24	Walnut	9	3	4	4	3	20e							3			Y	C1	>10	Growing within pasture garden preventing accurate measurement. Twin-stemmed from circa 4 metres above ground level.	2.40	18		
25	Row of Conifers	2av		1av	10av									65			Y	C2	>10	Contributing to hedgerow along southeast boundary of site.	1.20	5		
26	Field Maple	7	2	2	3	2								8	9	0		Y	C1	>10	Multi-stemmed from circa 0.5 metres above ground level. Growing amidst fencing with some branches arrested within site mesh.	2.88	26	
27	Pine	6	1	1	1	1	11							1			Y	C1	>10	Growing at northeast edge of site. Contributing to hedgerow.	1.32	5		
28	Hedgerow of predominantly Hawthorn	1.5av	0.5av	2av										0			Y	C2	>10	Recently planted hedgerow growing to south of mature off-site vegetation. Contributing to the boundary vegetation along northeast of site. Some Bramble, Conifer, Field Maple and Dog Wood growing amidst with occasional Blackthorn present.	0.24	0		
29	Hedgerow of predominantly Hawthorn with occasional Blackthorn	1.5av	1av	10av										0			MI	C1	>10	Hedgerow consisting of predominantly Hawthorn and Blackthorn with Bramble growing amidst. Hedge lying has recently occurred resulting in large wounds present at the base of many stems.	1.20	5		
30	Hawthorn hedge	2.5av	1av	10av										0			Y	C2	>10	Providing screening of site from allotments. Recently thinned to 2.5 metres above ground level.	1.20	5		
31	Predominantly Hawthorn hedgerow	1.5av	0.5av	5av										0			Y	C2	>10	Recently thinned to 1.5 metres above ground level.	0.60	1		
32	Hawthorn hedge with occasional Field Maple, Blackthorn, Dog Rose, Prunella, Elderberry	2av	1av	5av										0			MI	C2	>10	Spaced hedgerow running from southwest to southeast of site with some new planting having occurred. Bramble growing amidst.	0.60	1		
33	Yew	3av	1av	10av										1			Y	C1	>10	Growing along hedgerow.	1.20	5		
35	Mixed species hedgerow of predominantly Hawthorn	2.5av	2av	10av										0			MI	C2	>10	Hedgerow of predominantly Hawthorn with occasional Ash and Sycamore trees growing amidst. Recently failed to 2.5 metres above ground level with consequent large wounds present throughout. Ivy present on many stems preventing thorough inspection. Ash and Sycamore stems appear to have grown from old coppice stumps with large pockets of decay present throughout.	1.20	5		
36	Mixed species hedgerow of predominantly Hawthorn	2.5av	2av	10av										0			MI	C2	>10	Hedgerow of predominantly Hawthorn with occasional Ash and Sycamore trees growing amidst. Recently failed to 2.5 metres above ground level with consequent large wounds present throughout. Ivy present on many stems preventing thorough inspection. Ash and Sycamore stems appear to have grown from old coppice stumps with large pockets of decay present throughout.	1.20	5		
37	Ash	9	4	4	4	3	30e							2	4SE	MI	C1	>10	Heavily dead in ivy preventing accurate measurement and thorough inspection. Twin-stemmed from circa 2 metres above ground level. Ivy preventing inspection of main fork. Dense Bramble growing amidst up to circa 4 metres above ground level.	3.60	41			
38	Hedgerow of Conifers	3av	1av	15av										0			Y	C2	>10	Recently reduced to 3 metres above ground level.	1.80	10		
39	Predominantly Hawthorn hedgerow	2.5av	1av	10av										0			MI	C2	>10	Recently maintained to 2.5 metres above ground level. Providing screening of sheds and basin from road.	1.20	5		
40	Ash	13	6	6	6	7	43							3	3E	MI	B2	>20	Contributing to tree belt. Small wounds present throughout possibly associated with previous branch loss/removal with small pockets of associated decay therein. Small deadwood present throughout.	5.16	84			
41	Sycamore	14	5	4	4	5	36							4	4N	MI	B2	>20	Contributing to tree belt. Heavily dead in ivy preventing thorough inspection of crown. Possibly growing from old coppice stump with large pockets of decay therein.	4.32	59			
42	Sycamore	12	5	5	5	35e								2	38	MI	B2	>20	Growing adjacent to outwashed shed preventing accurate measurement of stem. Tightly-stemmed from circa 2 metres above ground level with tight union therein up to 4 metres above ground level highly susceptible to failure. Large pocket of basal decay present to south of stem at 0.5 metres above ground level.	4.20	55			
43	Hedgerow of Sycamore and Ash	7av	3av	10av										0			Y	C2	>10	Growing from old coppice stumps with large pockets of associated decay. Contributing to tree belt.	1.20	5		
44	Hawthorn hedgerow with occasional Ash and Sycamore	6av	2av	10av										0			MI	C2	>10	Hawthorn hedgerow of circa 4 metres in height with emerging Sycamore and Ash coppice growth. Providing screening of allotment from main road.	1.20	5		

Carriageway widened to provide a minimum of 4.8m width with full height kerb provided along side of proposed footway

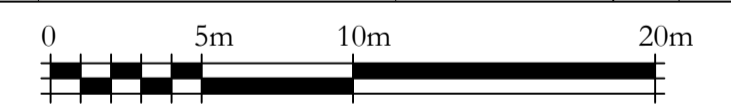
Entrance feature fence to separate detail

Wildflower meadow and native shrub planting  
'Wildlife Enhancement'



Sheet Layout

Rev A 15.12.15 jtk  
Revised layout imported.



CLIENT: CSA Environmental Planning

PROJECT: Land at Green Lane, Chesterton

TITLE: Tree Protection Plan

DRAWING NUMBER: 8364/02 Rev A 3/3

STATUS: For Information

DATE: Oct 2015 SCALE: 1:250 @ A1

DRAWN BY: ML CHECKED BY: JTK

Do not scale from this drawing. All dimensions to be checked on site.

The copyright of this document resides with Ian Keen Limited unless assigned in writing by the company.



Note:  
The original of this drawing was produced in colour - a monochrome copy should not be relied upon.

Tree survey based on RPS drawing number JKK8123\_1 Rev A.

Site Plan based on Life Space Design drawing number LSD 129.03.01U.

For tree protective barrier, ground protection and 'no-dig' details see drawing number 8364/02 Rev A 1/3.