

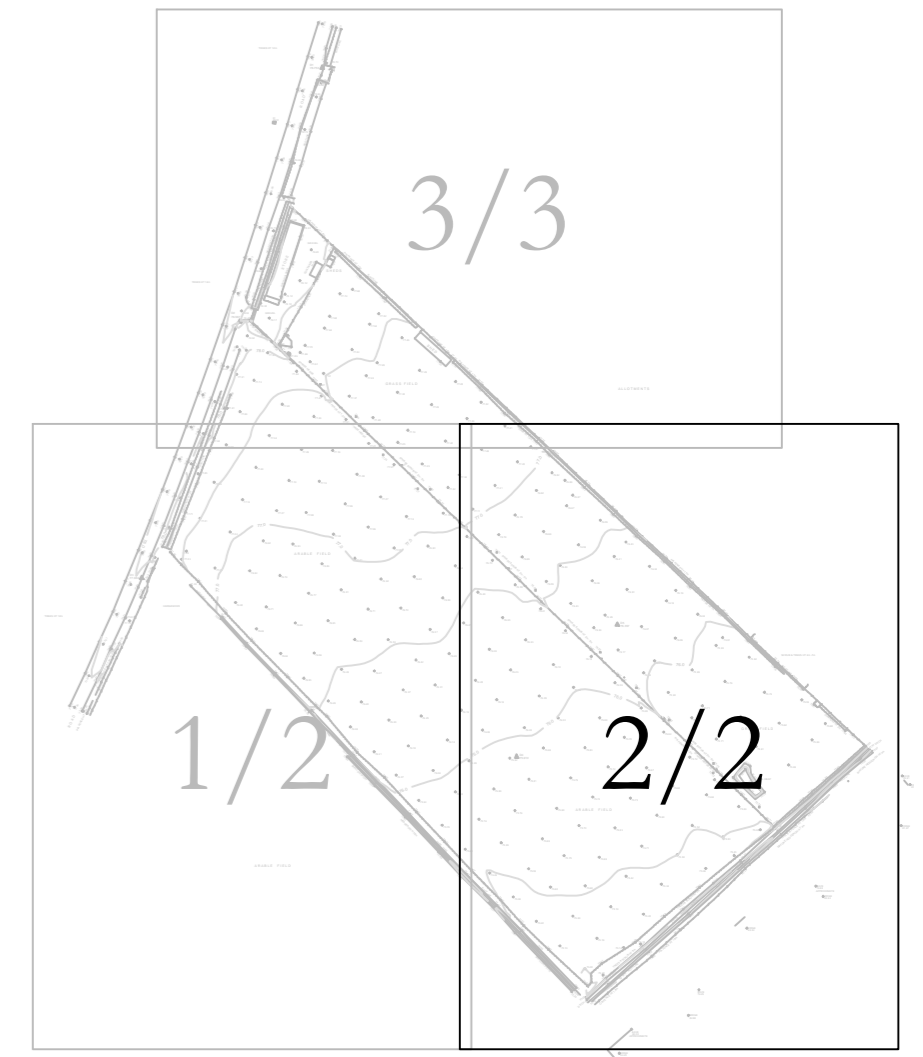
Note:  
The original of this drawing was produced in colour - a monochrome copy should not be relied upon.

Tree survey based on RPS drawing number JKK8123\_1 Rev A.

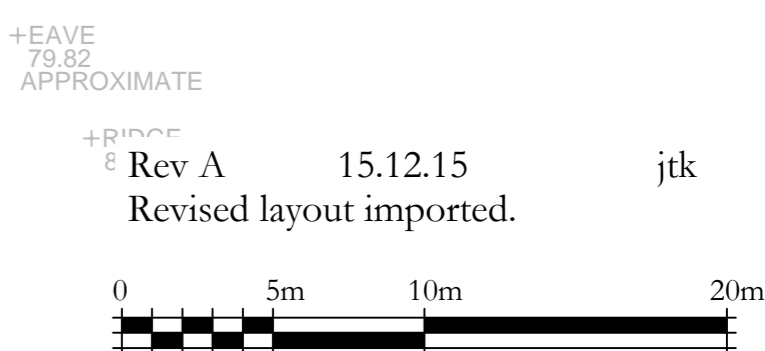
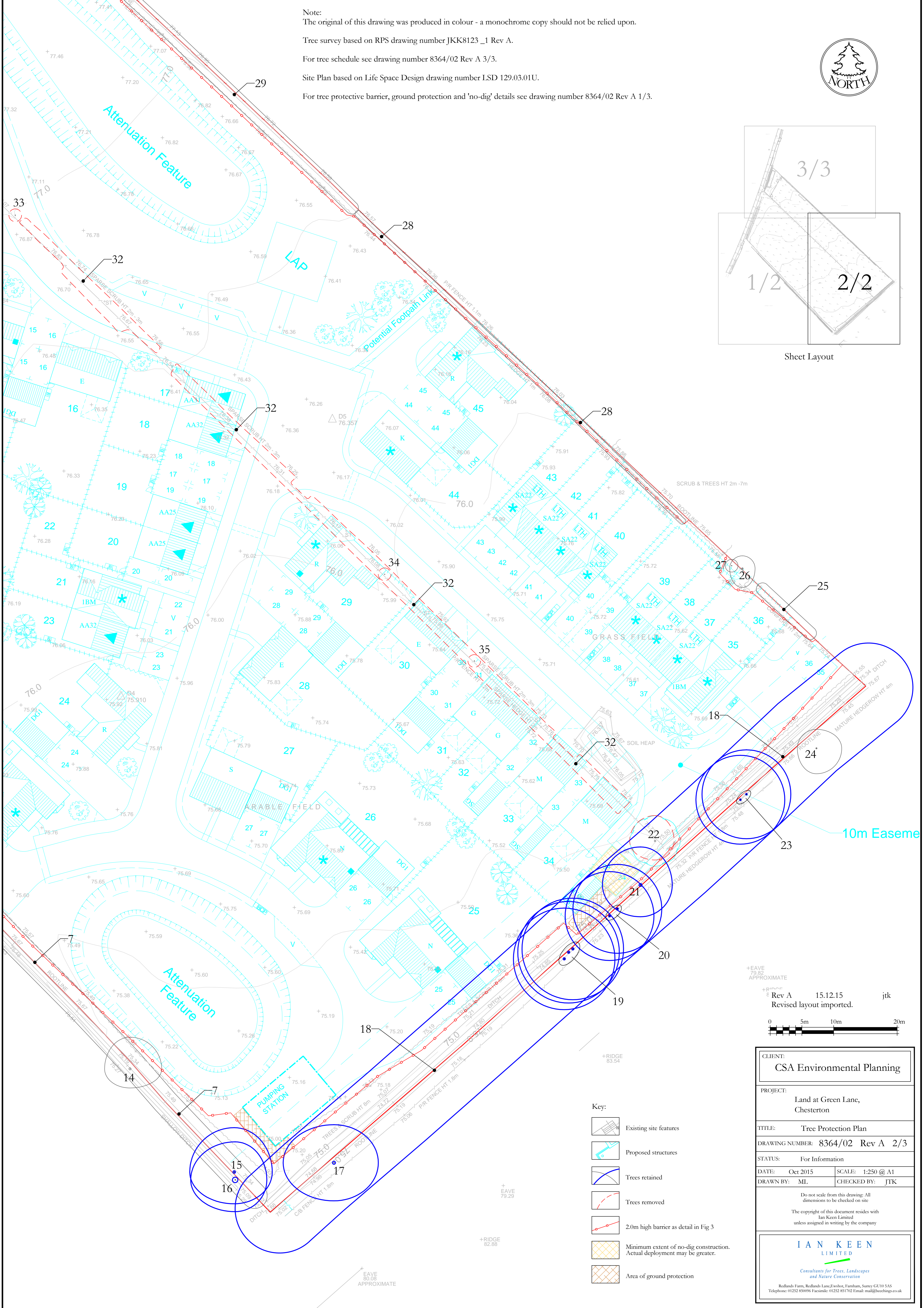
For tree schedule see drawing number 8364/02 Rev A 3/3.

Site Plan based on Life Space Design drawing number LSD 129.03.01U.

For tree protective barrier, ground protection and 'no-dig' details see drawing number 8364/02 Rev A 1/3.



Sheet Layout



- Key:
- Existing site features
  - Proposed structures
  - Trees retained
  - Trees removed
  - 2.0m high barrier as detail in Fig 3
  - Minimum extent of no-dig construction. Actual deployment may be greater.
  - Area of ground protection

CLIENT: <b>CSA Environmental Planning</b>	
PROJECT: Land at Green Lane, Chesterton	
TITLE: Tree Protection Plan	
DRAWING NUMBER: 8364/02 Rev A 2/3	
STATUS: For Information	
DATE: Oct 2015	SCALE: 1:250 @ A1
DRAWN BY: ML	CHECKED BY: JTK
Do not scale from this drawing: All dimensions to be checked on site.	
The copyright of this document resides with Ian Keen Limited unless assigned in writing by the company.	
<small>Rollands Farm, Rollands Lane, Ewshot, Farnham, Surrey GU10 5AS Telephone: 01252 850096 Facsimile: 01252 851702 Email: mail@ikeyn.co.uk</small>	