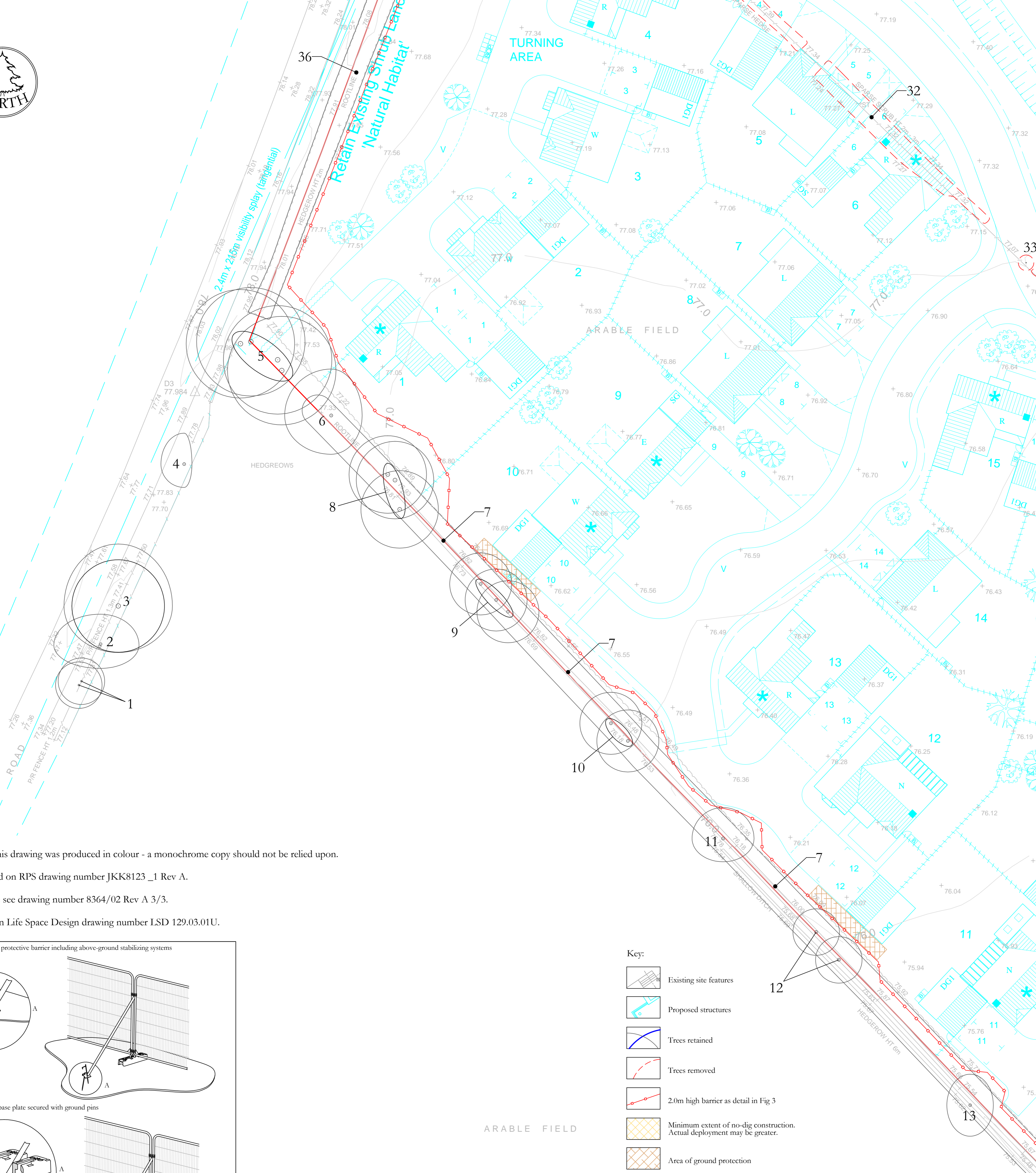
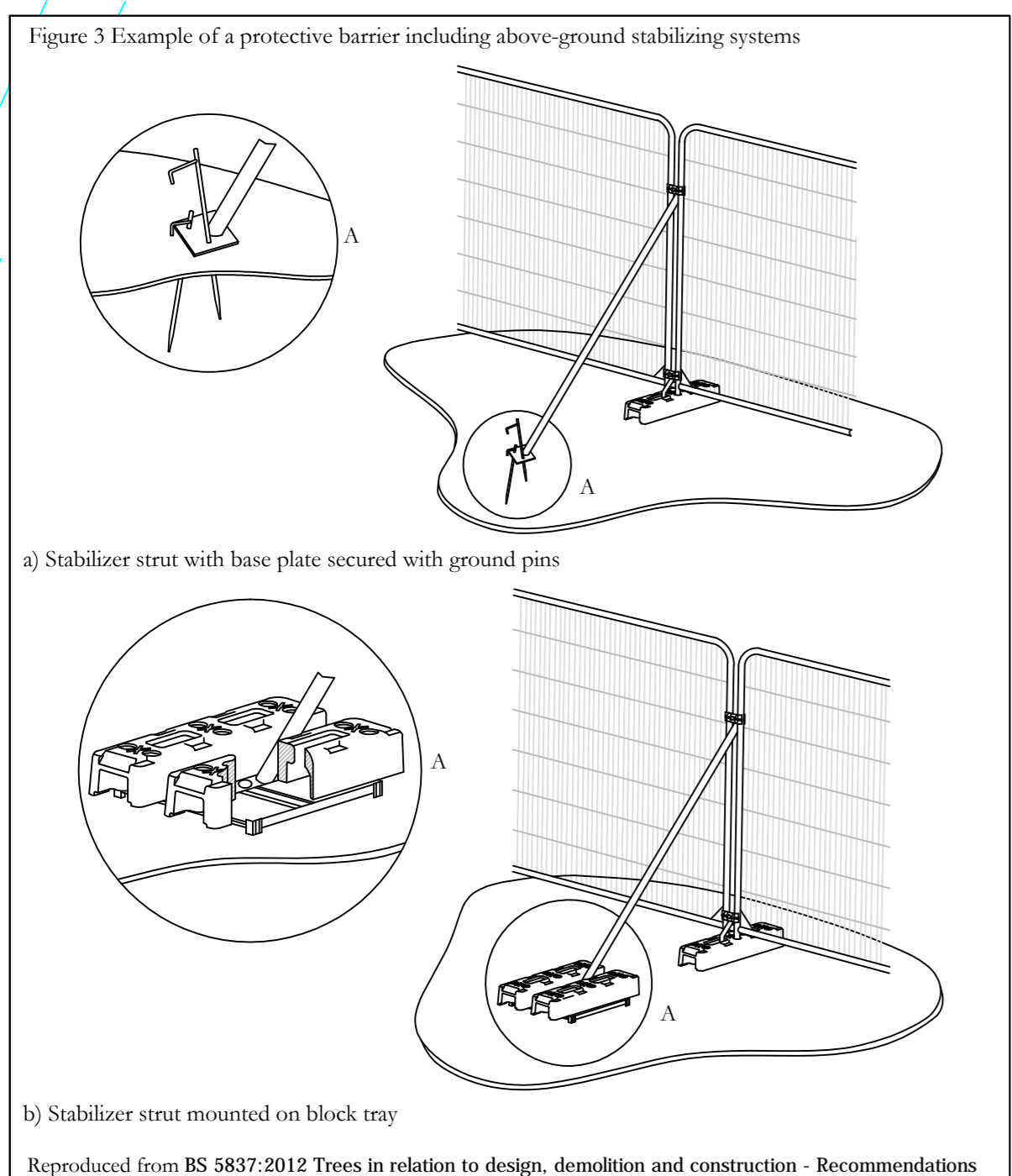




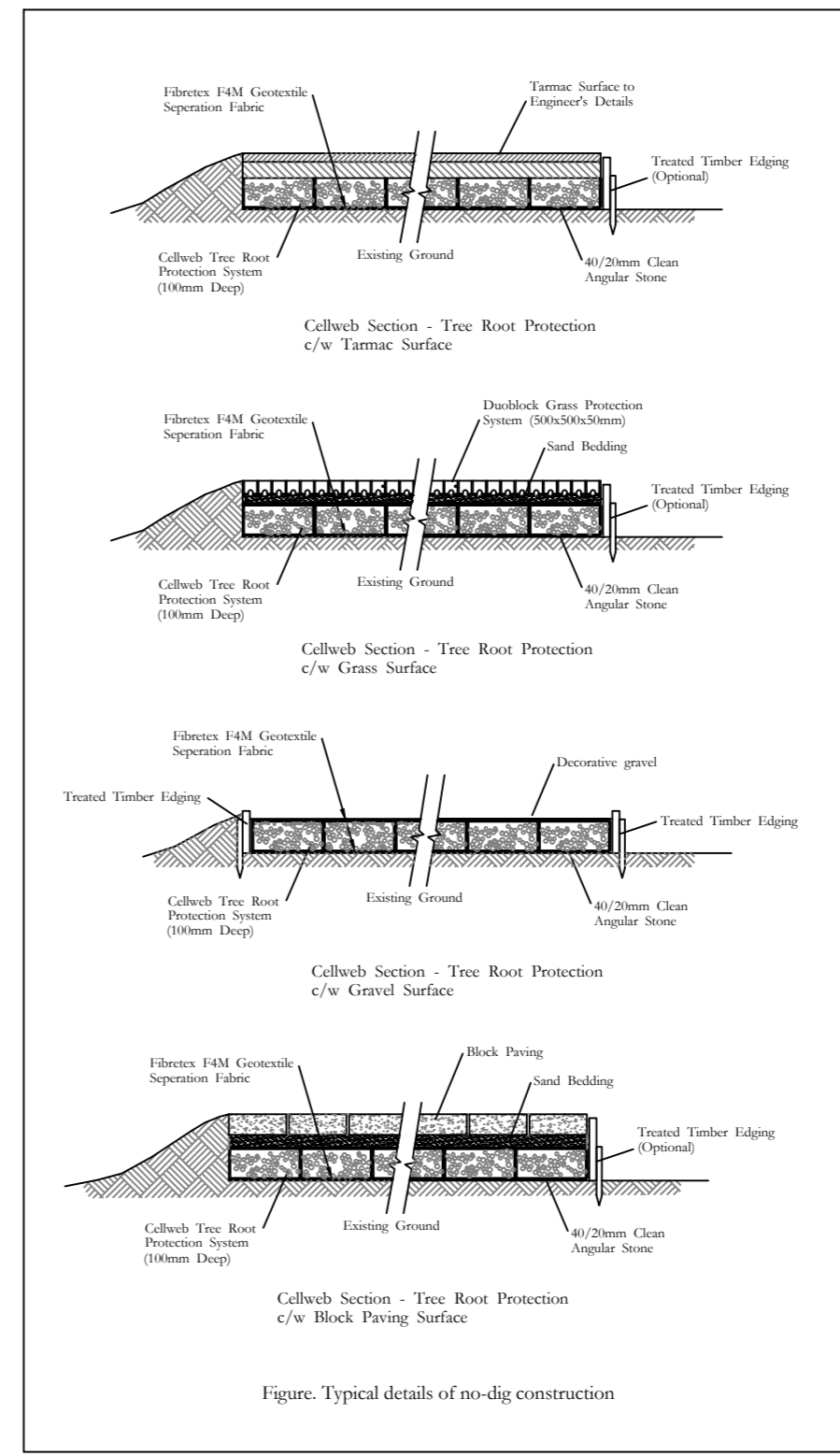
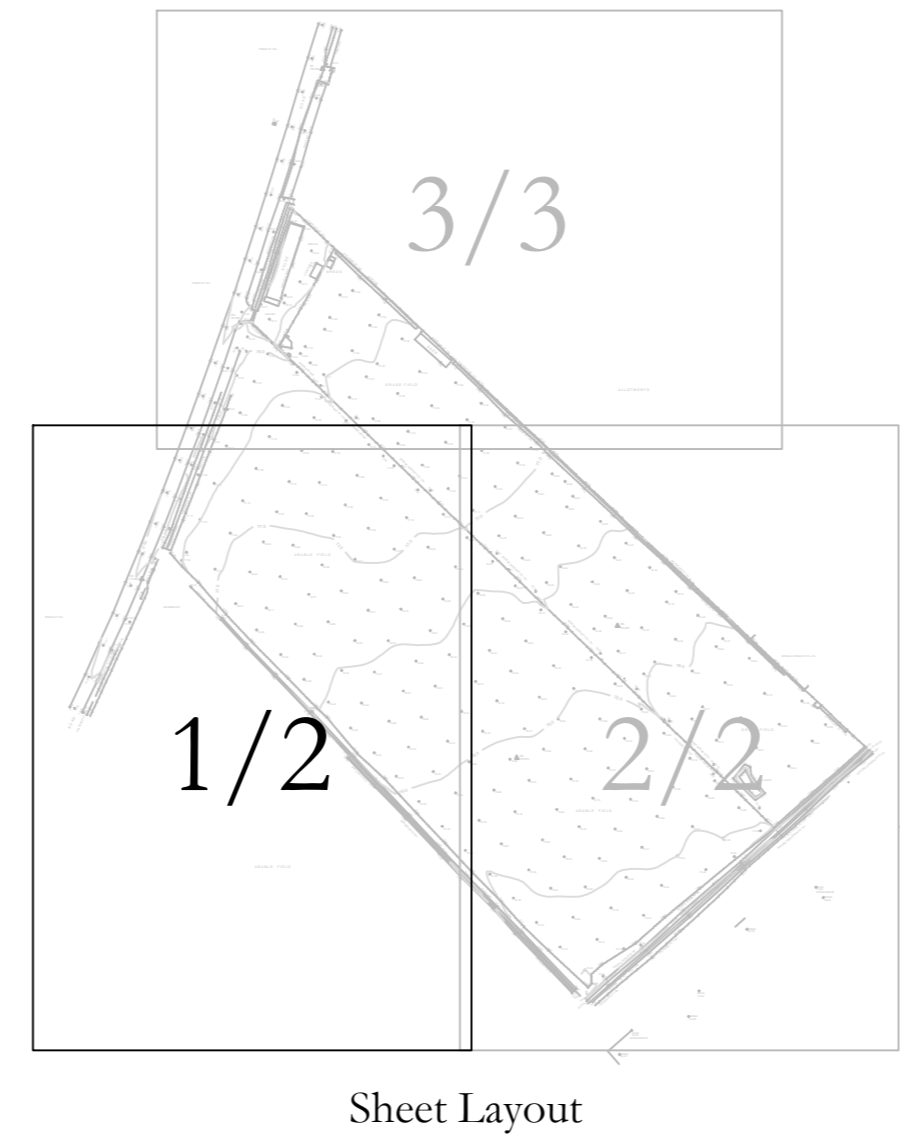
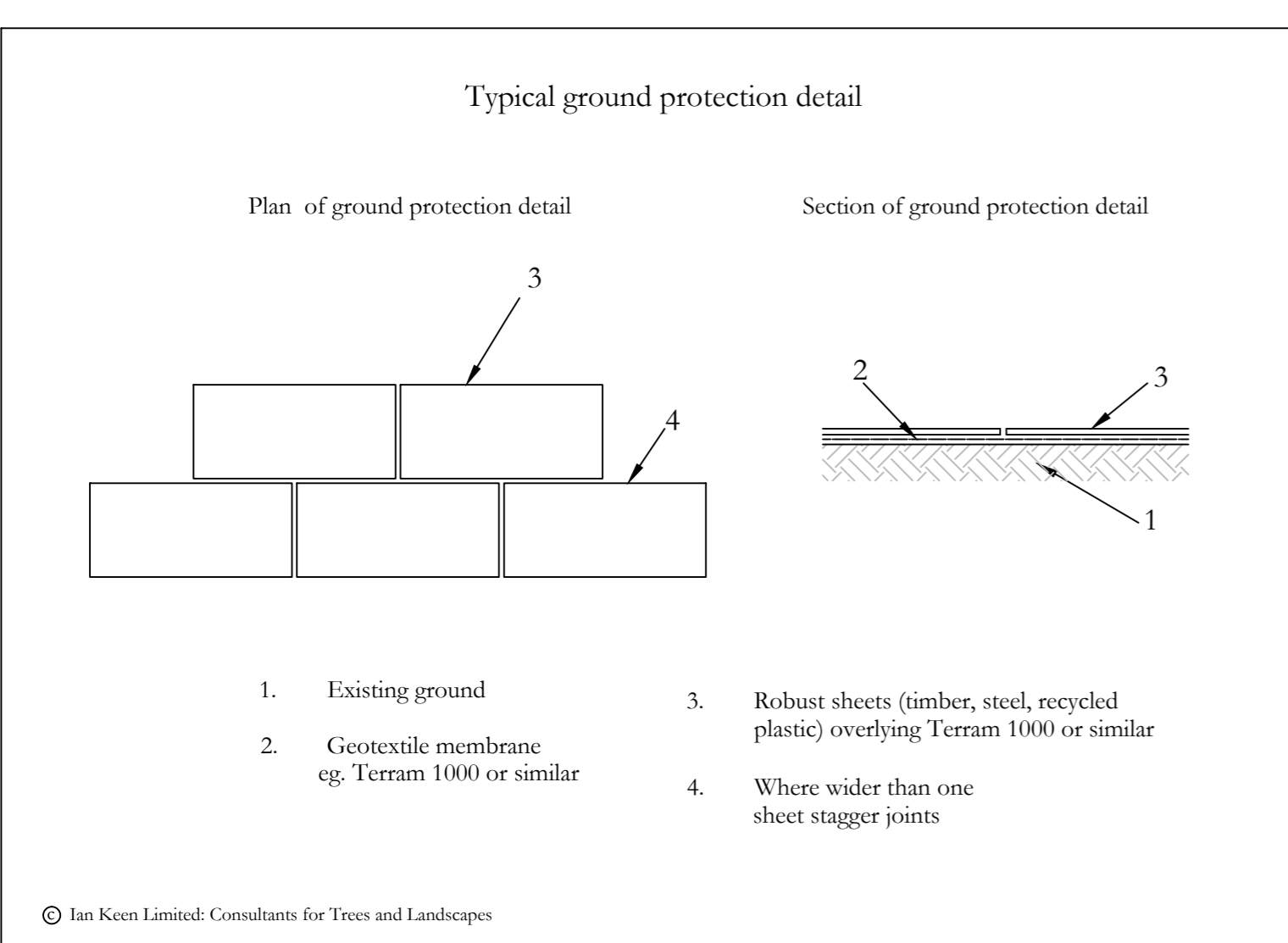
TREES HT 12m



Note:
 The original of this drawing was produced in colour - a monochrome copy should not be relied upon.
 Tree survey based on RPS drawing number JKK8123_1 Rev A.
 For tree schedule see drawing number 8364/02 Rev A 3/3.
 Site Plan based on Life Space Design drawing number LSD 129.03.01U.



- Key:
- Existing site features
 - Proposed structures
 - Trees retained
 - Trees removed
 - 2.0m high barrier as detail in Fig 3
 - Minimum extent of no-dig construction. Actual deployment may be greater.
 - Area of ground protection



Rev A 15.12.15 jtk
 Revised layout imported.

0 5m 10m 20m

CLIENT: CSA Environmental Planning	
PROJECT: Land at Green Lane, Chesterton	
TITLE: Tree Protection Plan	
DRAWING NUMBER: 8364/02 Rev A 1/3	
STATUS: For Information	
DATE: Oct 2015	SCALE: 1:250 @ A1
DRAWN BY: ML	CHECKED BY: JTK

Do not scale from this drawing; All dimensions to be checked on site.
 The copyright of this document resides with Ian Keen Limited unless assigned in writing by the company.

IAN KEEN LIMITED
 Consultants for Trees, Landscapes and Nature Conservation

Rollands Farm, Rollands Lane, Ewelsh, Farnham, Surrey GU10 5AS
 Telephone: 01252 850996 Facsimile: 01252 851702 Email: mail@beechnings.co.uk