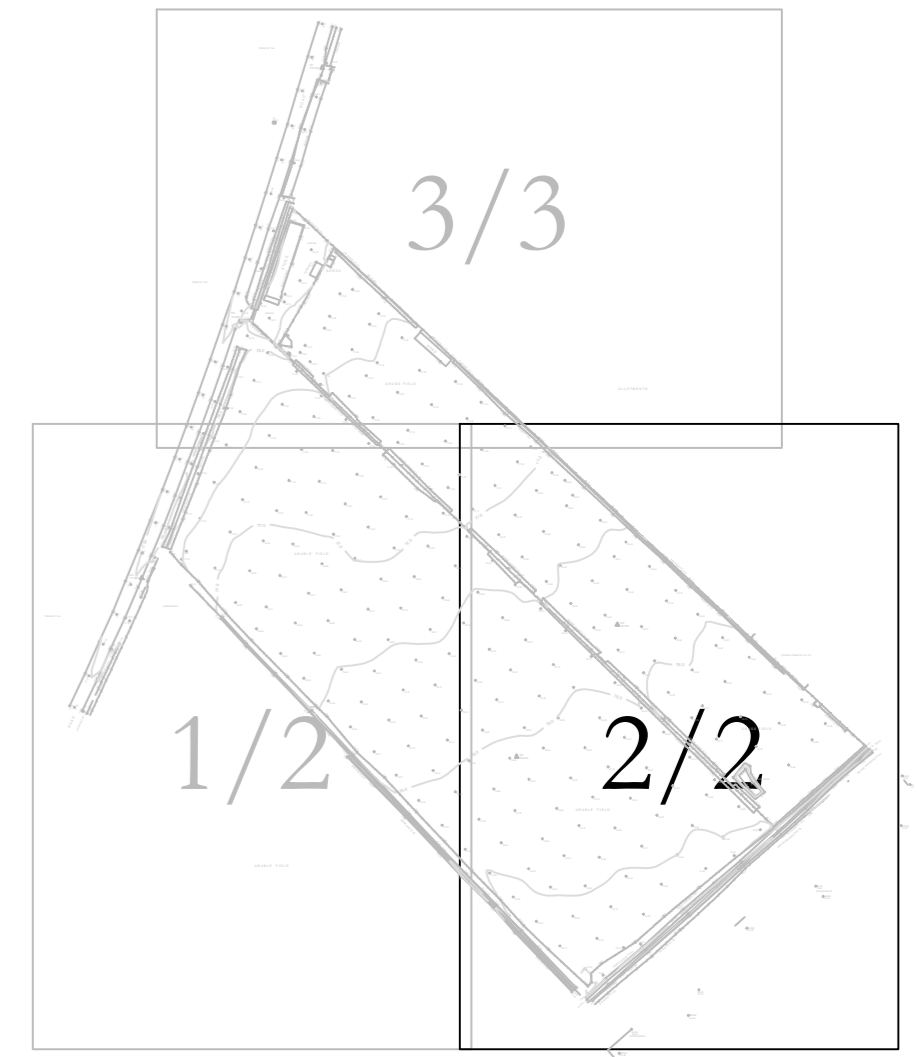


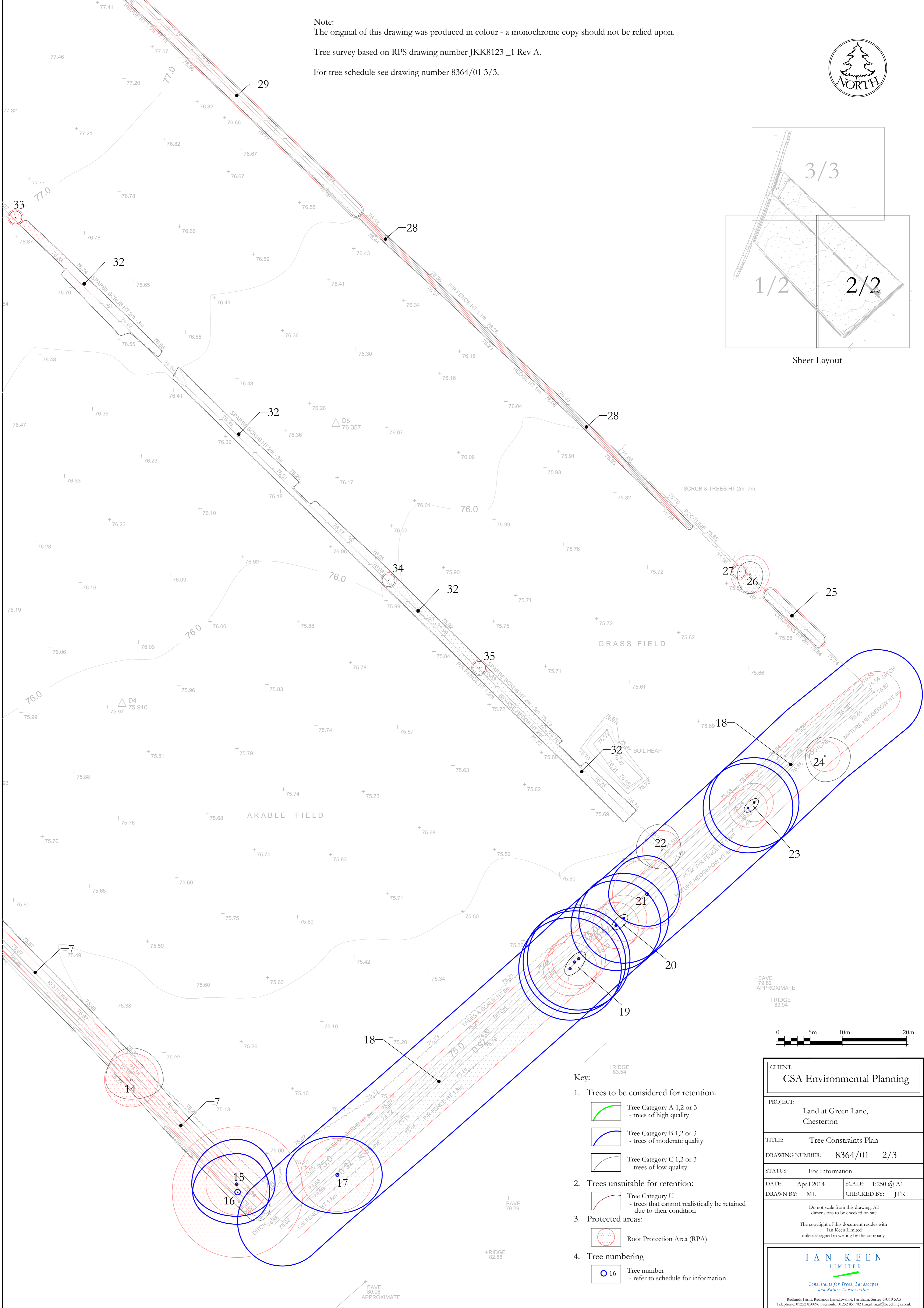
Note:
The original of this drawing was produced in colour - a monochrome copy should not be relied upon.

Tree survey based on RPS drawing number JKK8123_1 Rev A.

For tree schedule see drawing number 8364/01 3/3.


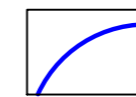
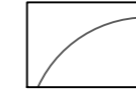


Sheet Layout

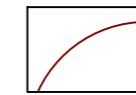


Key:

1. Trees to be considered for retention:

-  Tree Category A 1,2 or 3
- trees of high quality
-  Tree Category B 1,2 or 3
- trees of moderate quality
-  Tree Category C 1,2 or 3
- trees of low quality

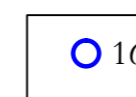
2. Trees unsuitable for retention:

-  Tree Category U
- trees that cannot realistically be retained
due to their condition

3. Protected areas:

-  Root Protection Area (RPA)

4. Tree numbering

-  Tree number
- refer to schedule for information

CLIENT:
CSA Environmental Planning

PROJECT:
Land at Green Lane,
Chesterton

TITLE:
Tree Constraints Plan

DRAWING NUMBER: 8364/01 2/3

STATUS: For Information

DATE: April 2014 SCALE: 1:250 @ A1

DRAWN BY: ML CHECKED BY: JTK

Do not scale from this drawing: All
dimensions to be checked on site

The copyright of this document resides with
Ian Keen Limited
unless assigned in writing by the company

IAN KEEN
LIMITED

Consultants for Trees, Landscapes
and Nature Conservation

Rollands Farm, Rollands Lane, Ewshot, Farnham, Surrey GU10 5AS
Telephone: 01252 85096 Facsimile: 01252 851702 Email: mail@ikeyn.co.uk